

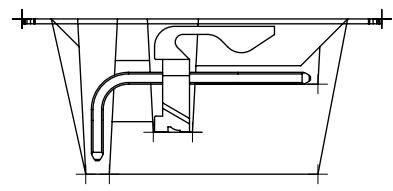
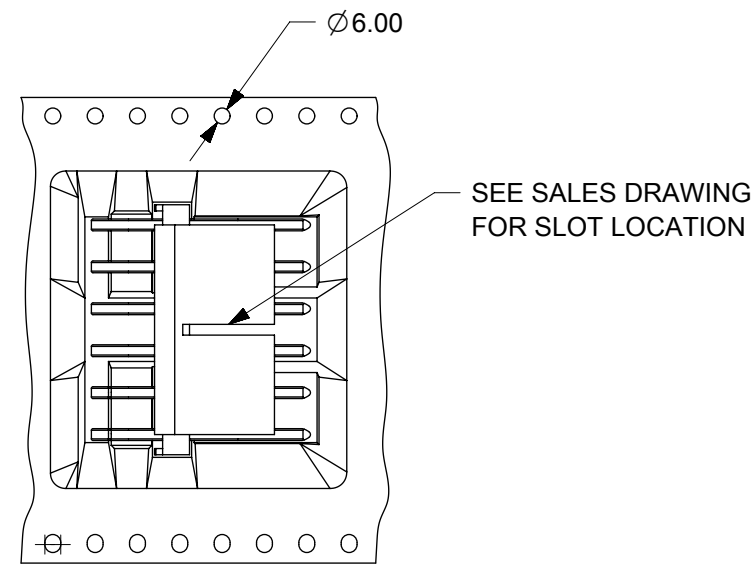
- NOTES:
- 1) PACKAGING MATERIALS: EMBOSSED CARRIER TAPE IS POLYSTYRENE (PS), TOP COVER TAPE IS A COMPOSITE OF POLYETHYLENE TEREPHTHALATE (PET), POLYETHYLENE (PE), AND POLYFILM (PEF), CARRIER REEL IS POLYSTYRENE (PS).
 - 2) EACH REEL MUST BE LOADED WITH 120 CONNECTORS (SEE NOTE 4).
 - 3) THE FOLLOWING NOTES HAVE BEEN DERIVED FROM THE E.I.A. STANDARDS 481.
 - 4) CONNECTOR MINIMUMS/REEL ARE SHOWN ABOVE; IN NO CASE SHALL THERE BE TWO CONSECUTIVE COMPONENTS MISSING BETWEEN THE FIRST AND LAST PART OF ANY REEL.
 - 5) THE TOP COVER TAPE SHALL BE CLEAR ONLY, NOT EXTEND OVER THE EDGES OF THE CARRIER TAPE OR COVER ANY PART OF THE SPROCKET HOLES.
 - 6) ADJACENT LAYERS OF TAPE SHALL NOT STICK TOGETHER WHEN WOUND ON THE CARRIER REEL.
 - 7) THE TOP COVER TAPE MUST BE SECURELY ATTACHED TO THE EMBOSSED CARRIER TAPE.
 - 8) EACH REEL SHALL HAVE A LABEL AFFIXED TO IT WITH THE FOLLOWING INFORMATION: PART NO. (CUSTOMER PART NO.), QUANTITY, AND DATE CODE.
 - 9) TAPE SPLICES ARE NOT PERMITTED.
 - 10) THE TOP COVER TAPE SHALL HAVE A TOTAL PEEL STRENGTH OF 0.1-0.7 NEWTONS WHEN PULLED OPPOSITE THE DIRECTION OF CARRIER TAPE TRAVEL. THE CARRIER AND/OR COVER TAPE SHALL BE PULLED WITH A VELOCITY OF APPROX. 120 mm/MINUTE.
 - 11) ALL DIMENSIONS ARE SHOWN FOR REFERENCE ONLY.

THIS DRAWING CONTAINS INFORMATION THAT IS PROPRIETARY TO MOLEX ELECTRONIC TECHNOLOGIES, LLC AND SHOULD NOT BE USED WITHOUT WRITTEN PERMISSION									
SYMBOLS	DIMENSION UNITS	SCALE	CURRENT REV DESC: COVER TAPE CHANGE						
	mm	1:1	molex KK 396 RPC TAPE & REEL PK SPEC. FOR RIGHT ANGLE HEADER ASS'Y PACKAGING DESIGN DRAWING						
▽ = 0	GENERAL TOLERANCES (UNLESS SPECIFIED)								
▽ = 0	ANGULAR TOL	± 0.5°							
▽ = 0	4 PLACES	±							
▽ = 0	3 PLACES	±							
▽ = 0	2 PLACES	±	EC NO: 619169	DRWN: SSHANMUGAN01	2019/06/11	CHK'D: SSHANMUGAN01	2019/06/17	APPR: MRAMAKRISHNA	2019/06/17
▽ = 0	1 PLACE	±	INITIAL REVISION:		2014/02/21	DOCUMENT NUMBER: PK-171814-0001 DOC TYPE: PDD DOC PART: 001 REVISION: B			
▽ = 0	0 PLACES	±	DRWN: MKIPPER	2014/05/13	APPR: FSMITH				
▽ = 0	DRAFT WHERE APPLICABLE MUST REMAIN WITHIN DIMENSIONS		THIRD ANGLE PROJECTION	DRAWING	SERIES	MATERIAL NUMBER	CUSTOMER	SHEET NUMBER	
▽ = 0			⊕	B-SIZE	171814	SEE TABLE	GENERAL MARKET	1 OF 3	

TAPE AND REEL SPECIFICATION FOR RIGHT ANGLE THRU HOLE KK 396 RPC

ASSMBLY ITEM NO	CKT SIZE	EMBOSSSED TAPE ITEM NO	PARTS PER REEL	CARTON P/N	REELS/CARTON	PARTS/CARTON	COVER TAPE P/N	TAKE-UP REEL P/N	DIM F	DIM W	DIM S	DIM C
171814-*002	2	70180-5483	120	085-01-0014	7	840	36633-0014	70180-6526	20.20/.795	44.00/1.732	40.40/1.591	45.60/1.795
171814-*003	3	70180-5484	120	085-01-0014	7	840	36633-0014	70180-6526	20.20/.795	44.00/1.732	40.40/1.591	45.60/1.795
171814-*004	4	70180-5485	120	085-01-0014	7	840	36633-0014	70180-6526	20.20/.795	44.00/1.732	40.40/1.591	45.60/1.795
171814-*005	5	70180-5486	120	085-01-0014	7	840	36633-0014	70180-6526	20.20/.795	44.00/1.732	40.40/1.591	45.60/1.795
171814-*006	6	70180-5487	120	085-01-0014	7	840	36633-0014	70180-6526	20.20/.795	44.00/1.732	40.40/1.591	45.60/1.795
171814-*007	7	70180-5488	120	085-01-0014	5	600	36633-0067	70180-6527	26.20/1.032	56.00/2.205	52.40/2.063	57.60/2.268
171814-*008	8	70180-5489	120	085-01-0014	5	600	36633-0067	70180-6527	26.20/1.032	56.00/2.205	52.40/2.063	57.60/2.268
171814-*009	9	70180-5490	120	085-01-0014	5	600	36633-0067	70180-6527	26.20/1.032	56.00/2.205	52.40/2.063	57.60/2.268
171814-*010	10	70180-5491	120	96707-0014	2	240	70180-3655	70180-6528	34.20/1.346	72.00/2.835	68.40/2.693	73.60/2.898
171814-*011	11	70180-5492	120	96707-0014	2	240	70180-3655	70180-6528	34.20/1.346	72.00/2.835	68.40/2.693	73.60/2.898
171814-*012	12	70180-5493	120	96707-0014	2	240	70180-3655	70180-6528	34.20/1.346	72.00/2.835	68.40/2.693	73.60/2.898

PULL OUT DIRCTION FROM REEL 



TYPICAL PART ORIENTATION

SYMBOLS		THIS DRAWING CONTAINS INFORMATION THAT IS PROPRIETARY TO MOLEX ELECTRONIC TECHNOLOGIES, LLC AND SHOULD NOT BE USED WITHOUT WRITTEN PERMISSION	
	DIMENSION UNITS	SCALE	CURRENT REV DESC: COVER TAPE CHANGE
	mm	1:1	
	GENERAL TOLERANCES (UNLESS SPECIFIED)		
	ANGULAR TOL	± 0.5°	
	4 PLACES	±	EC NO: 619169
	3 PLACES	±	DRWN: SSHANMUGAN01 2019/06/11
	2 PLACES	±	CHK'D: SSHANMUGAN01 2019/06/17
	1 PLACE	±	APPR: MRAMAKRISHNA 2019/06/17
	0 PLACES	±	INITIAL REVISION:
	DRAFT WHERE APPLICABLE MUST REMAIN WITHIN DIMENSIONS		DRWN: MKIPPER 2014/02/21
	THIRD ANGLE PROJECTION		APPR: FSMITH 2014/05/13
		DRAWING	SERIES
		B-SIZE	171814
DOCUMENT STATUS		DOCUMENT NUMBER	DOC TYPE
P1	PK-171814-0001	PDD	001
RELEASE DATE	REVISION	CUSTOMER	SHEET NUMBER
2019/06/17	B	GENERAL MARKET	2 OF 3
15:35:13			

PACKAGING FOR REELS OF PARTS PACKAGED
IN 44mm WIDE TAPE

FOAM FILLER
P/N 85-04-1028
FILL AS REQUIRED TO TOP OF BOX

CARDBOARD FILLER (1)
P/N 85-04-0214

PRODUCT LABEL

7 LOADED CARRIER REELS
SEE CHART FOR COMPONENT ITEM
NUMBERS AND PACKAGING QUANTITIES

CARDBOARD FILLER (1)
P/N 85-04-0214

FOAM FILLER (1)
P/N 85-04-1028

CARTON P/N 70180-0371
ITEM NO 085-01-0014

PRODUCT LABEL

PACKAGING FOR REELS OF PARTS PACKAGED
IN 56mm WIDE TAPE

FOAM FILLER
P/N 85-04-1028
FILL AS REQUIRED TO TOP OF BOX

CARDBOARD FILLER (1)
P/N 85-04-0214

PRODUCT LABEL

5 LOADED CARRIER REELS
SEE CHART FOR COMPONENT ITEM
NUMBERS AND PACKAGING QUANTITIES

CARDBOARD FILLER (1)
P/N 85-04-0214

FOAM FILLER (5)
P/N 85-04-1028

CARTON P/N 70180-0371
ITEM NO 085-01-0014

PRODUCT LABEL

PACKAGING FOR REELS OF PARTS PACKAGED
IN 72mm WIDE TAPE

P/N 85-04-0591 FOAM FILLER
FILL AS REQUIRED TO TOP OF BOX

PRODUCT LABEL

2 LOADED CARRIER REELS
SEE CHART FOR COMPONENT ITEM
NUMBERS AND PACKAGING QUANTITIES

FOAM FILLER (3)
P/N 85-04-0591

LARGE TRAY CARTON
96707-0001
OR
96707-1007
OR
96707-0014

PRODUCT LABEL

THIS DRAWING CONTAINS INFORMATION THAT IS PROPRIETARY TO MOLEX ELECTRONIC TECHNOLOGIES, LLC AND SHOULD NOT BE USED WITHOUT WRITTEN PERMISSION											
SYMBOLS		DIMENSION UNITS		SCALE		CURRENT REV DESC: COVER TAPE CHANGE					
▽ = 0		mm		1:1		EC NO: 619169					
▽ = 0		GENERAL TOLERANCES (UNLESS SPECIFIED)						DRWN: SSHANMUGAN01		2019/06/11	
▽ = 0		ANGULAR TOL ± 0.5°						CHK'D: SSHANMUGAN01		2019/06/17	
▽ = 0		4 PLACES		±		APPR: MRAMAKRISHNA		2019/06/17		INITIAL REVISION:	
▽ = 0		3 PLACES		±		DRWN: MKIPPER		2014/02/21		DOCUMENT NUMBER	
▽ = 0		2 PLACES		±		APPR: FSMITH		2014/05/13		PK-171814-0001	
▽ = 0		1 PLACE		±		DRAFT WHERE APPLICABLE MUST REMAIN WITHIN DIMENSIONS		THIRD ANGLE PROJECTION		DOC TYPE DOC PART REVISION	
▽ = 0		0 PLACES		±		DRAWING		SERIES		PDD 001 B	
▽ = 0		DRAFT WHERE APPLICABLE MUST REMAIN WITHIN DIMENSIONS		THIRD ANGLE PROJECTION		B-SIZE		171814		MATERIAL NUMBER CUSTOMER SHEET NUMBER	
▽ = 0										SEE TABLE GENERAL MARKET 3 OF 3	