



Thread and locking adapter, Material: Polyamide PA 6.6, glass-fibre reinforced, Colour: Black

RAL: 9005

Business data

Article number	28771.4
Article name	KDS-RGA M20 BK
GTIN (EAN)	4044211234515
Colour	Black
Packaging unit	5
Quantity unit	PC
Weight per piece (not including packaging)	7.2 g
Weight per piece (including packaging)	8 g
Unit of weight	G
Customs number	39259020
Country of origin	DE
Product description	Cable Entry

28771.4 KDS-RGA M20 BK

Technical data

Dimensions

Length	38 mm
Length of wall cutout	20.3 mm
Width	38 mm
Width of wall cutout	20.3 mm
Height	22.1 mm
Installation height	14.9 mm

Thread

Thread type	Metric
Thread size	20 mm
Thread pitch	1.5 mm
Thread length (L)	14.9 mm

Materials

Material	Polyamide 6.6
Glass-fibre reinforced	✓
Flammability class UL 94	V-0
Working temperature, min.	-40 °C
Working temperature, max.	120 °C
Halogen-free	✓
Silicone-free	✓

Further technical data

Mounting type	Screws
Degree of protection	IP66
NEMA Type	1, 12, 4x (indoor use only)
Torque for the locknut	3 Nm

Environmental Product Compliance

REACH Conform	yes
REACH Reference date	2022-06-10
REACH Candidate Substance Note	No
RoHS Conform	yes

Approvals

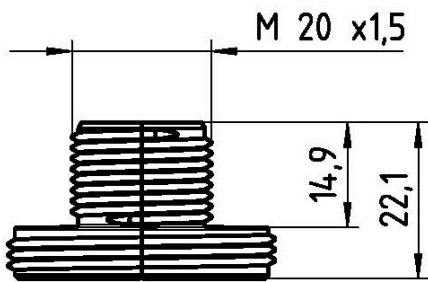
UL Recognized

UL File Number	E489821
UL Type Rating	1, 12, 4x (indoor use only)
UL approval	UL 508A
UL Recognized	1

cUL Recognized

cUL approval	C22.2 No. 14-18
cUL File Number	E489821
cUL Recognized	1

Media



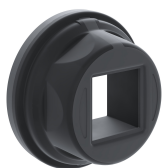
28771.4 KDS-RGA M20 BK

Accessories

Small Seals

Separable locknut

##INVERSE##CONTA-CABLE



Round cable entry, Material: polyamide PA 6.6, glass-fibre reinforced | TPE, Colour: Black

Article number	Article name	GTIN (EAN)	Packaging unit
<u>28770.4</u>	KDS-R 20-32 BK	4044211234508	5 ST

Sheet-metal puncher
