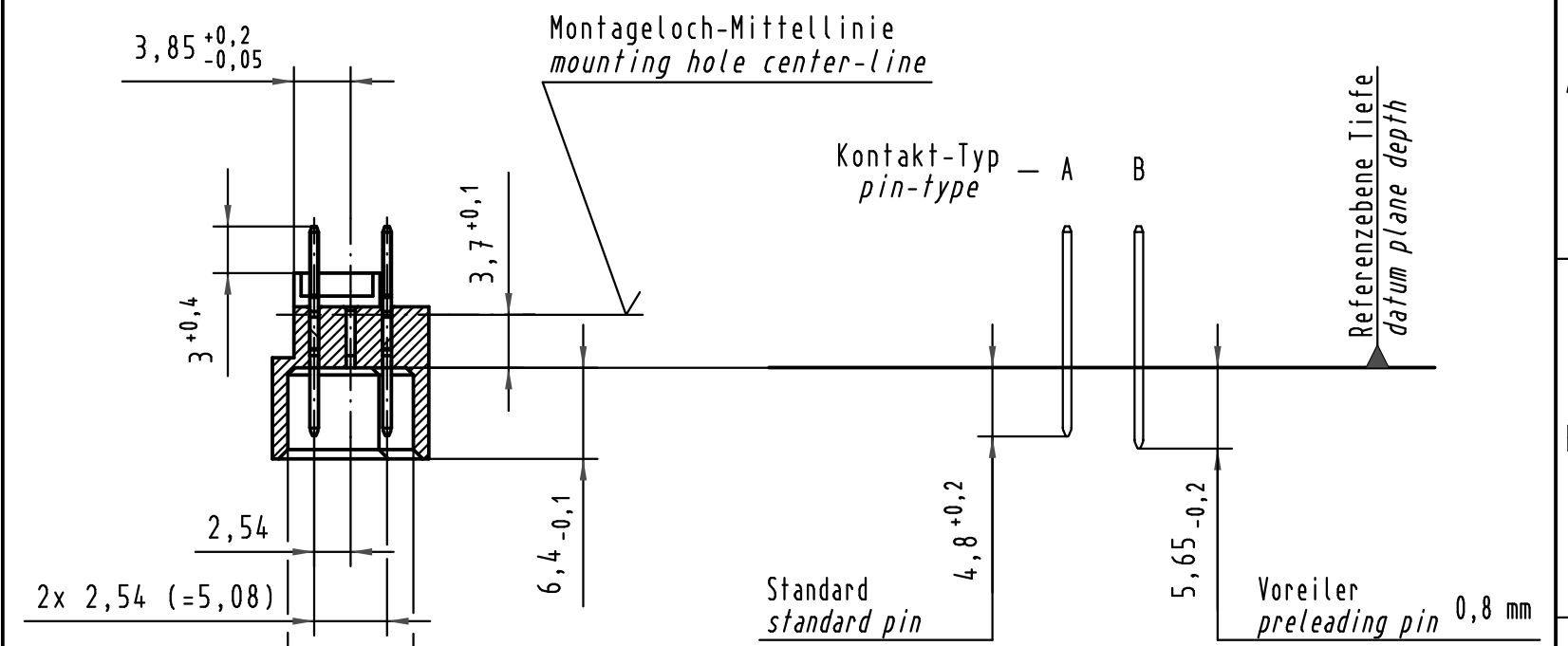
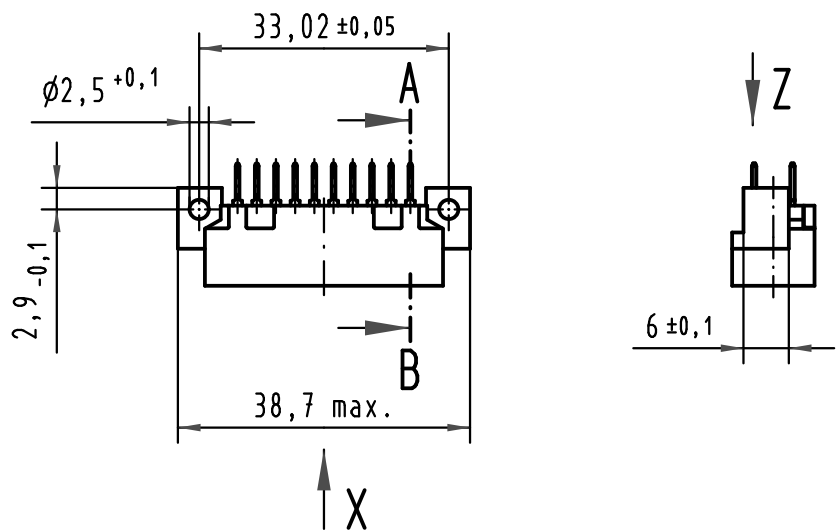
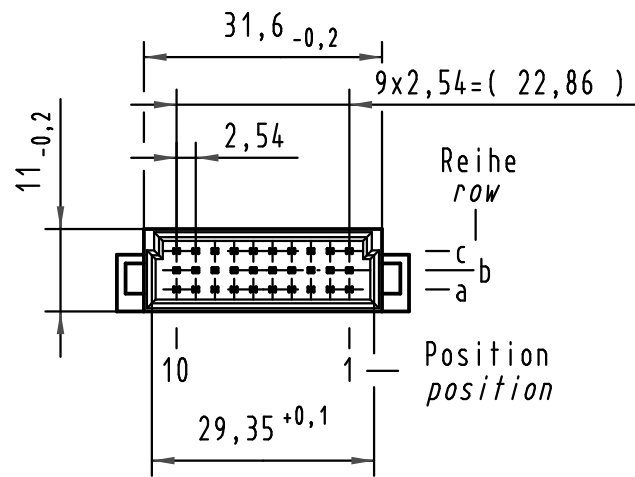
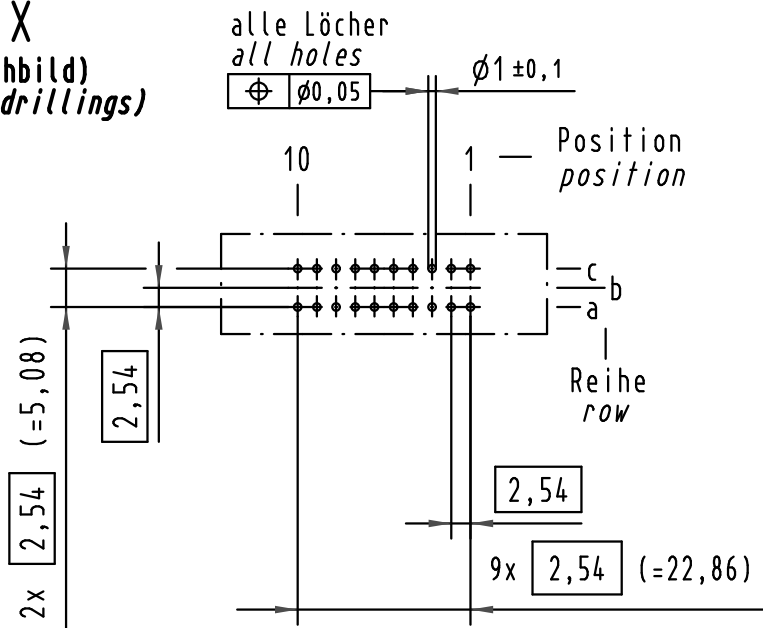


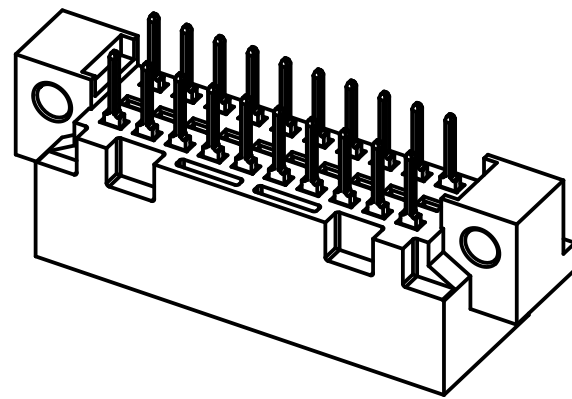
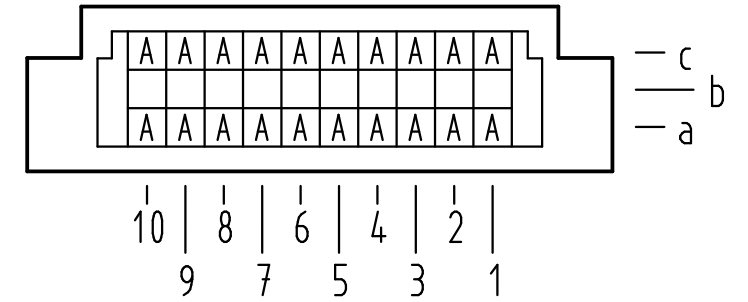
Alle Rechte vorbehalten/ All rights reserved

**X**  
(Lochbild)  
(board drillings)



A-B  
2:1

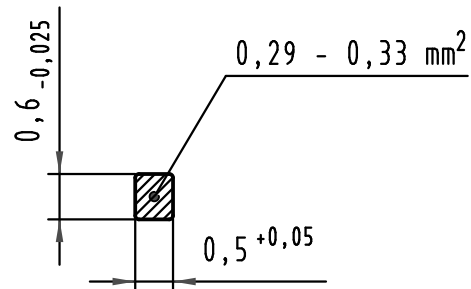
**X** Kontaktbelegung  
contact loading



09 25 120 6922	2	Au flash over PdNi over Ni
Bestell-Nr. part-no.	Anforderungsstufe nach IEC performance level acc. to IEC	Kontaktoberfläche contact plating

**Z**  
10:1

Querschnitt der  
Lötanschlüsse:  
cross-section of  
solder terminations:



 All Dimensions in mm Original Size DIN A 3	Techn. Character.			Nicht tolerierte Maße/Free size tolerances IEC 60603-2	
	Detail.	24.06.09	MR	Maßstab/Scale 1:1 2:1 10:1	Bauform 3C Messerleiste Einlöt, 20 pol. type 3C male connector solder, 20 pol.
	Insp.	24.06.09	RA		
	Stand.				
Mod.	Dat.	Name	HARTING Electronics GmbH & Co. KG D-32339 ESPELKAMP		
				TB 09 25 120 x922	
				Blatt/page Sub.	