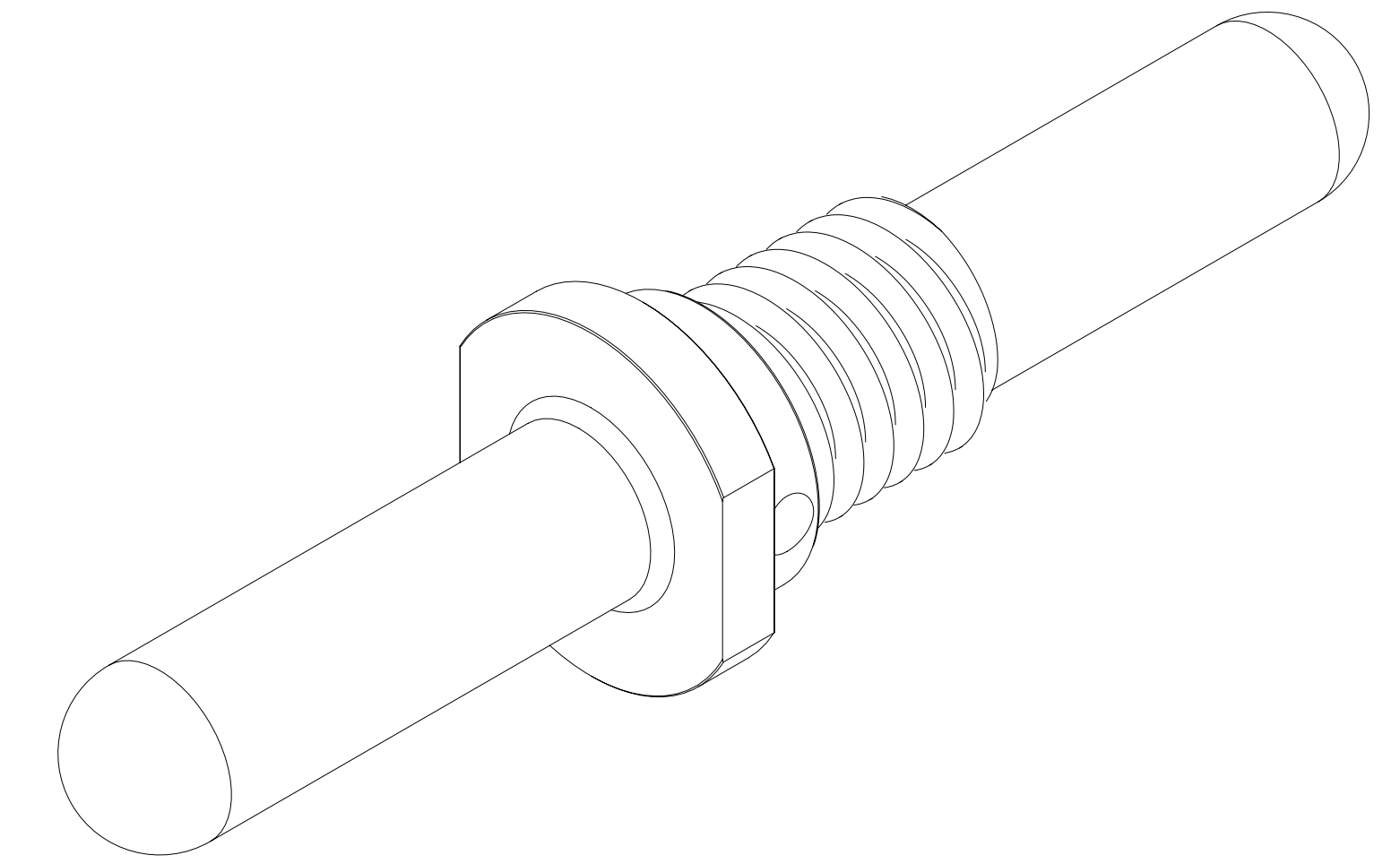
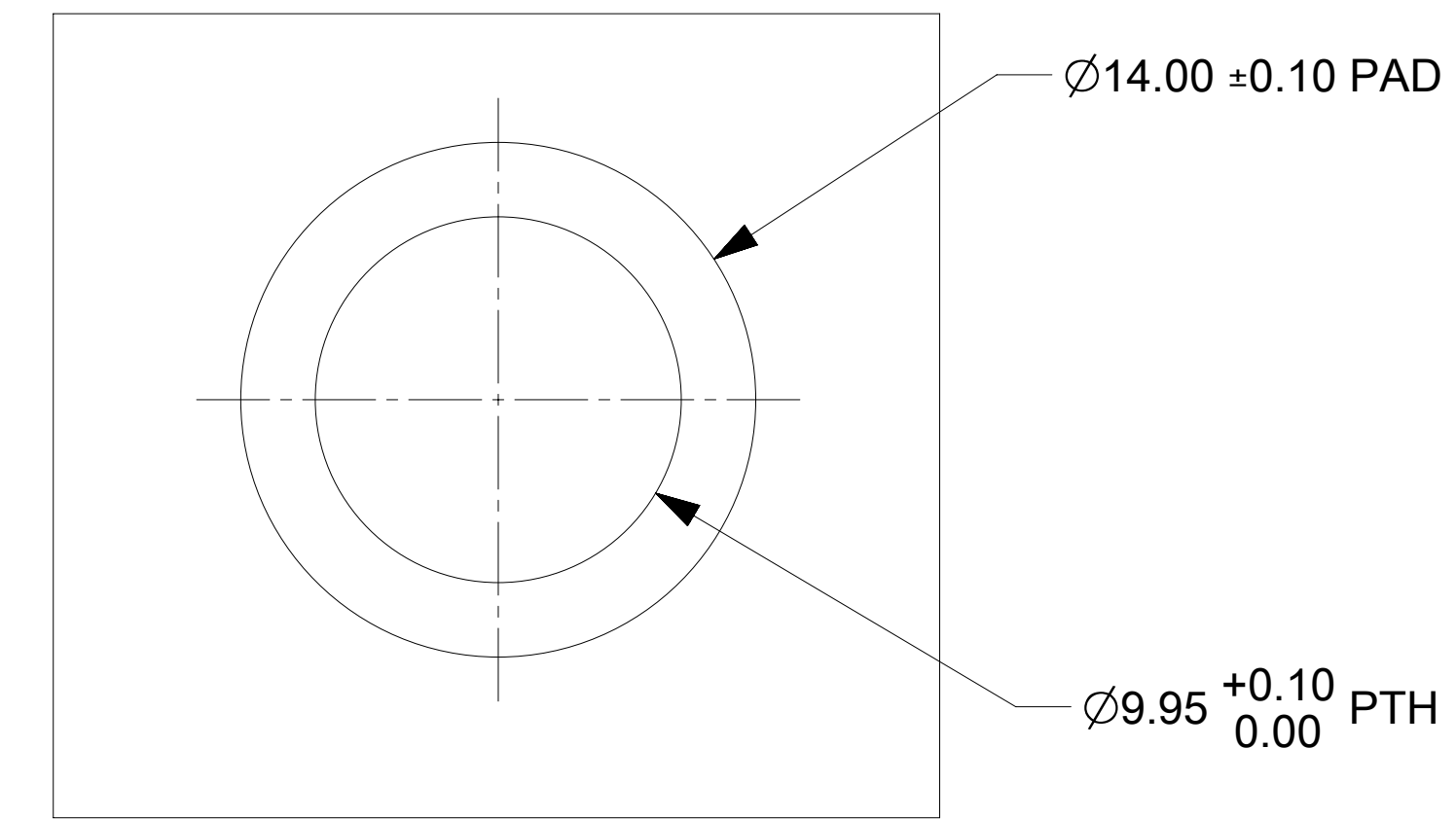


| PART NUMBER | DIMENSION "L1" | DIMENSION "L2" | DIMENSION "L3" |
|-------------|----------------|----------------|----------------|
| 2143370028 | 20.20 | 18.00 | 46.25 |
| 2143370042 | 23.20 | 21.00 | 52.25 |



ISOMETRIC VIEW OF THE
CENTRALITY 6.00MM SCREW THREADED INTERPOSER PIN



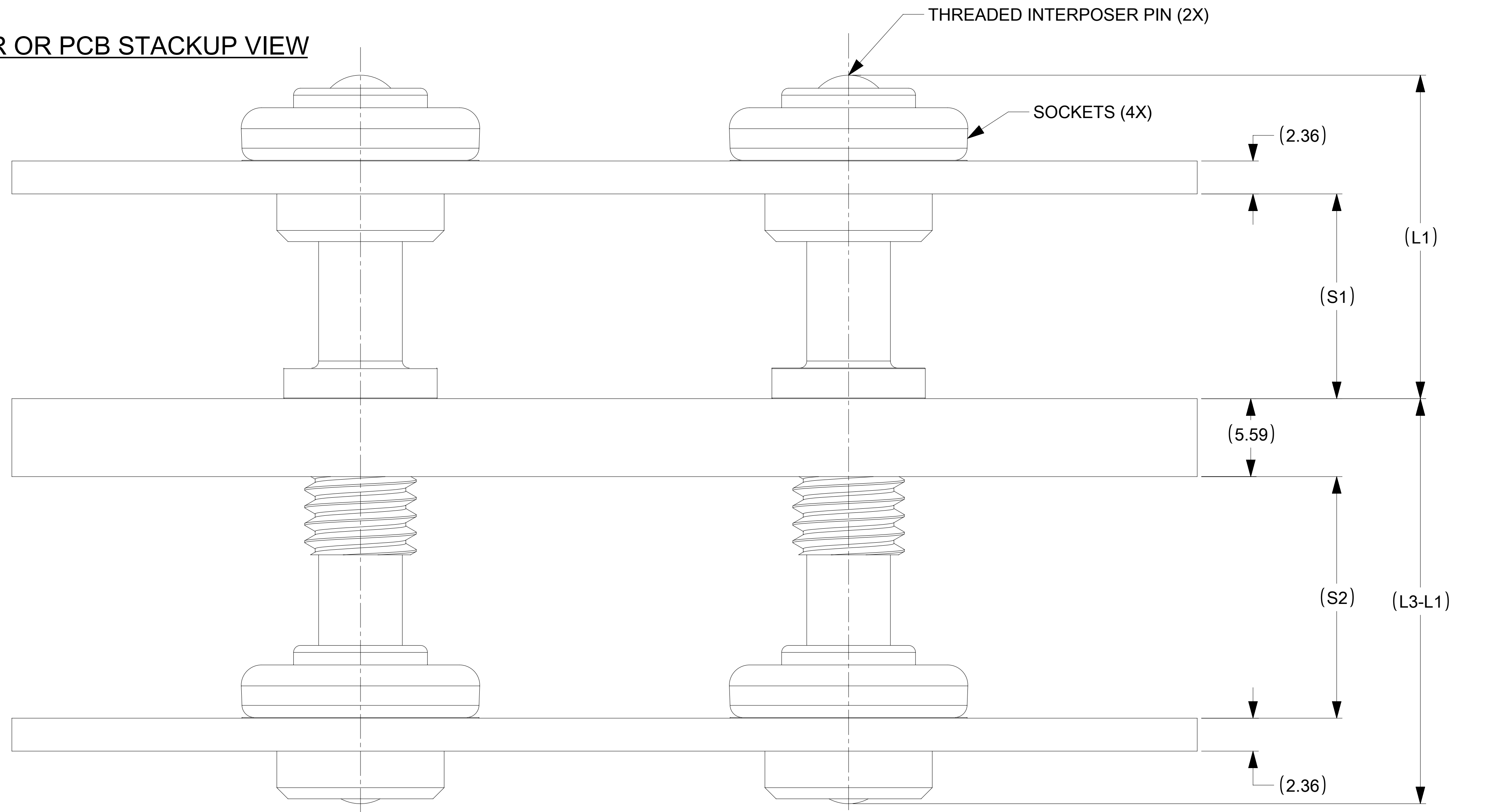
RECOMMENDED PCB OR BUSBAR LAYOUT

NOTES :

- MATERIAL:
 - BASE METAL : HIGH CONDUCTIVE COPPER ALLOY
 - PLATING ON BODY : 3.18 MICRON MIN SILVER OVER 1.27 MICRON MIN NICKEL
- PRODUCT SPECIFICATION: 2043130001-PS.
- APPLICATION SPECIFICATION: 2043130001-AS
- PACKAGING SPECIFICATION: 2032630006-PK
- PIN WILL BE SUPPLIED TARNISH FREE BUT MAY TARNISH OVER TIME.

| | | | | | | | | | | | |
|---|--|---------------------|--|---|--|--------------------|--|--------------------------|--|--|--|
| THIS DRAWING CONTAINS INFORMATION THAT IS PROPRIETARY TO MOLEX ELECTRONIC TECHNOLOGIES, LLC AND SHOULD NOT BE USED WITHOUT WRITTEN PERMISSION | | | | | | | | | | | |
| DIMENSION UNITS mm | | SCALE 5:1 | | CURRENT REV DESC: CHANGED THE STATUS FORM RESTRICTED TO GENERAL MARKET. UPDATED THE TITLE BLOCK | | | | | | molex | |
| GENERAL TOLERANCES (UNLESS SPECIFIED) | | | | EC NO: 743070 | | | | | | | |
| ANGULAR TOL ± 0.5° | | | | 4 PLACES ± | | DRWN: SOURAJ | | 2023/03/20 | | SENTRALITY 6.0MM SCREW THREADED INTERPOSER PIN | |
| 3 PLACES ± | | | | CHK'D: SCS02 | | 2023/03/21 | | | | | |
| 2 PLACES ± 0.15 | | | | APPR: HTHYAGARAJ | | 2023/03/24 | | PRODUCT CUSTOMER DRAWING | | | |
| 1 PLACE ± 0.25 | | | | INITIAL REVISION: | | DRWN: GJEEVANSURES | | 2021/07/08 | | DOCUMENT NUMBER | |
| 0 PLACES ± | | | | APPR: HTHYAGARAJ | | 2021/08/09 | | 2143370028 | | DOC TYPE DOC PART REVISION | |
| DRAFT WHERE APPLICABLE MUST REMAIN WITHIN DIMENSIONS | | | | THIRD ANGLE PROJECTION | | DRAWING | | SERIES | | MATERIAL NUMBER CUSTOMER SHEET NUMBER | |
| | | | | | | D-SIZE | | 214337 | | SEE TABLE GENERAL MARKET 1 OF 2 | |

BUSBAR OR PCB STACKUP VIEW



| PART NUMBER | DIMENSION "S1" | DIMENSION "S2" |
|-------------|----------------|----------------|
| 2143370028 | 11.68 | 14.33 |
| 2143370042 | 14.68 | 17.33 |

THIS DRAWING CONTAINS INFORMATION THAT IS PROPRIETARY TO MOLEX ELECTRONIC TECHNOLOGIES, LLC AND SHOULD NOT BE USED WITHOUT WRITTEN PERMISSION

DIMENSION UNITS: mm
SCALE: 5:1

CURRENT REV DESC: CHANGED THE STATUS FORM RESTRICTED TO GENERAL MARKET. UPDATED THE TITLE BLOCK

GENERAL TOLERANCES (UNLESS SPECIFIED)

| | |
|-------------|--------|
| ANGULAR TOL | ± 0.5° |
| 4 PLACES | ± |
| 3 PLACES | ± |
| 2 PLACES | ± 0.15 |
| 1 PLACE | ± 0.25 |
| 0 PLACES | ± |

EC NO: 743070
 DRWN: SOURAJ 2023/03/20
 CHK'D: SCS02 2023/03/21
 APPR: HTHYAGARAJ 2023/03/24
 INITIAL REVISION:
 DRWN: GJEEVANSURES 2021/07/08
 APPR: HTHYAGARAJ 2021/08/09

molex

SENTRALITY 6.0MM SCREW THREADED INTERPOSER PIN

PRODUCT CUSTOMER DRAWING

| | | | |
|-----------------|----------|----------|----------|
| DOCUMENT NUMBER | DOC TYPE | DOC PART | REVISION |
| 2143370028 | PSD | 000 | A4 |

| | | | | | | |
|--|------------------------|---------|--------|-----------------|----------------|--------------|
| DRAFT WHERE APPLICABLE MUST REMAIN WITHIN DIMENSIONS | THIRD ANGLE PROJECTION | DRAWING | SERIES | MATERIAL NUMBER | CUSTOMER | SHEET NUMBER |
| | | D-SIZE | 214337 | 2143370028 | GENERAL MARKET | 2 OF 2 |