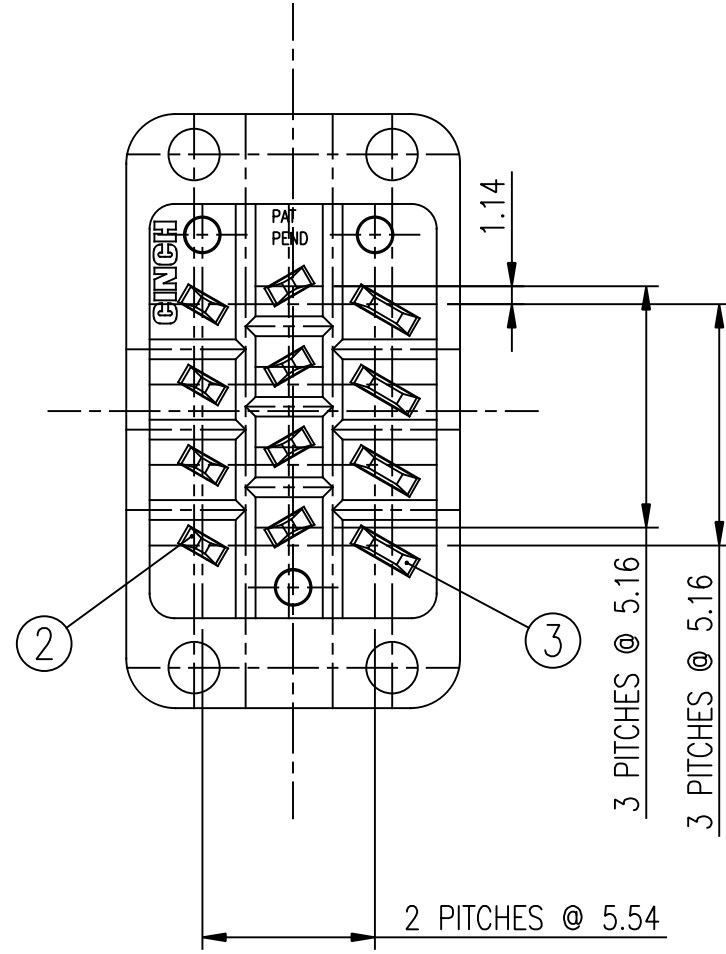
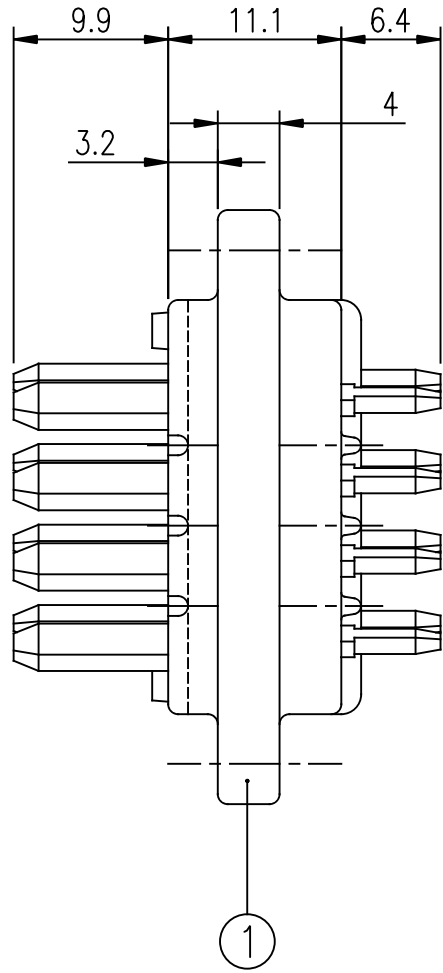
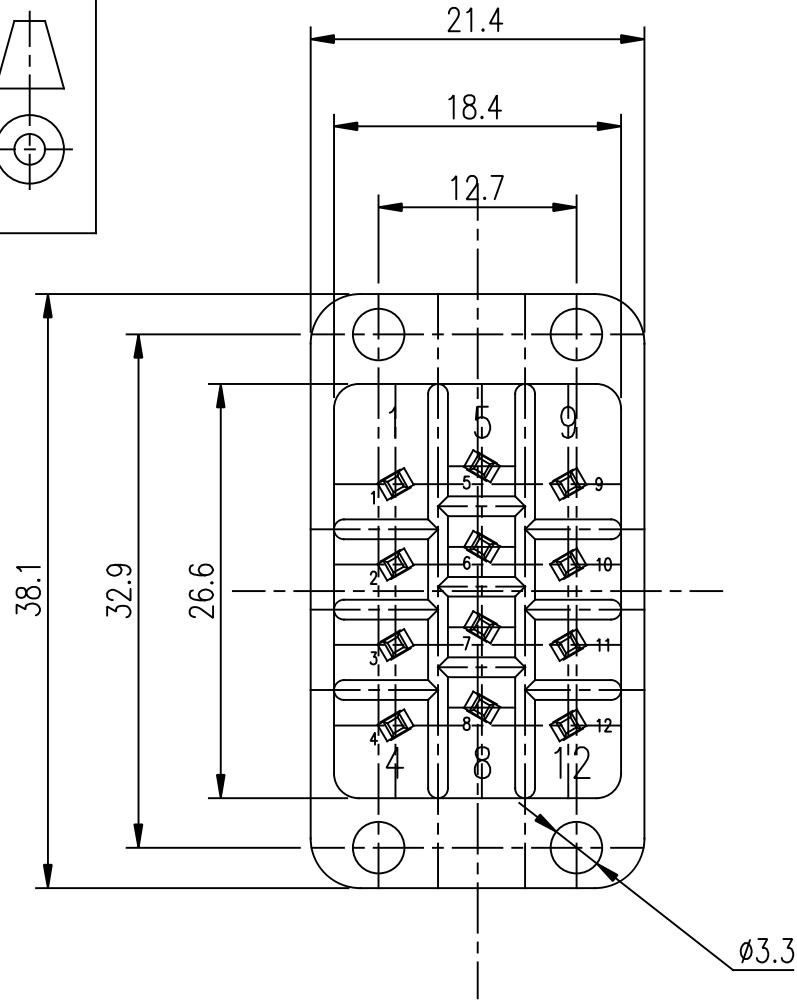


1	2	3	4	5	6	7
CINCH Connectors Ltd. WORKSOP, ENGLAND						
RELEVANT SPEC. 77848 00 000 000 000 SHEET 1 OF 1						
CAD No. G:JA7784800000000						
IF IN DOUBT - ASK ALL DIMENSIONS ARE IN mm						

CUSTOMER DRAWING ONLY.



NOTES:

1. ALL PINS TO BE STAKED IN POSITION AS SHOWN.
2. ALL DIMENSIONS ARE REFERENCE ONLY UNLESS STATED OTHERWISE.

THIS DRAWING IS COPYRIGHT AND IS ISSUED ON CONDITION IT IS NOT COPIED, REPRODUCED OR DISCLOSED TO A THIRD PARTY WITHOUT THE CONSENT IN WRITING OF CINCH CONNECTORS LTD. ATTENTION IS DRAWN TO THE FACT THAT THE ARTICLE DISCLOSED MAY BE COVERED BY BRITISH OR FOREIGN PATENTS, GRANTED OR PENDING OR REGISTERED DESIGN.

APP'D		DATE		MOD No.		ISSUE	
GENERAL TOLERANCE		06.06.07		A		CUST. ISS.	
TITLE		J-TYPE		12 WAY PLUG CONNECTOR ASSEMBLY		FINISHED COLOUR	
DRN. R. MUSCROFT		DATE 06.06.07		SCALE 2:1		CHD	
RAW MATERIAL		MATERIAL SPEC.		APP'D		FINISHED TREATMENT	
FINISHED HARDNESS		FINISH TREATMENT		FINISHED COLOUR		APP'D	