



Connect your computer to Profibus DP, MPI/S7, PPI/PPI+, and FDL/S5 Networks.

BradCommunications™ applicom® is the easiest and trouble free solution to quickly connect your visualization application to the industrial world.

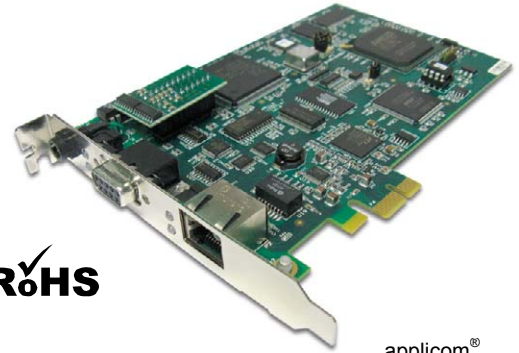
14 May. 10  
DW2005102

## Profibus Network Interface Cards

Best choice for SCADA/HMI applications

### Features

- **New!**
  - Support of Windows 32-bit and 64-bit (WoW64)
  - Support of Windows Seven and 2008 Server
- **COMBO protocol: Run all Profibus protocols simultaneously (DP, PPI/PPI+, S7/ MPI, FDL, FMS)**
- **Complete and user-friendly package**
  - ▶ All components in the box
  - ▶ 2 years of hardware warranty
  - ▶ Local technical support with worldwide representation
  - ▶ 1 driver / 1 configuration tool for all protocols
  - ▶ Graphical User Interface
  - ▶ Network diagnostic and test tools
- **On-board processor eliminates data bottle necks, ensuring delivery of time critical information**
- **Certified with more 50 major SCADA/HMI packages Each card onboard an internal Data Base (32 Kwords + 32 Kbits)**
- **Compatible with:**
  - ▶ Simatic® S7 Series (S7-300, S7-400)
  - ▶ Simatic® S5 Series (95U, 115U, 135U, 155U)



RoHS

applicom®  
PCIE1500PFB / PCIE1500S7



### Supported OS

#### Standard package

- **Windows 32-bit and 64-bit (WoW64)**
  - Windows XP
  - Windows 2003 Server
  - Windows Vista
  - Windows Seven
  - Windows 2008 Server
  - Windows 2008 Server R2

#### Free Download

- **Other operating systems**
  - Ardence RTX
  - VxWorks
  - QNX
  - Linux
  - DOS

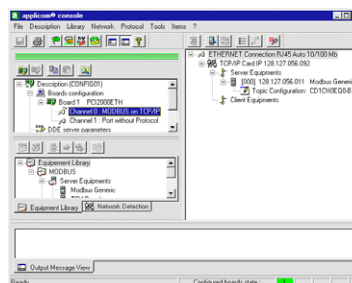
### Overview

applicom® is a range of intelligent communication solutions, complete and ready to use covering more than 40 protocols among a wide choice of industrial networks and fieldbuses: Ethernet TCP/IP, Profibus, Modbus Plus, Data Highway Plus, WorldFIP and Serial Links. These solutions connect your PC-based applications (HMI, SCADA, MES, Custom applications) to industrial equipment (programmable controller, I/O modules, devices...).

Thanks to applicom® smart technology - built-in processor, each interface card is able to execute all management and the processing (polling, frame management, etc.) of communications protocols, resulting in extremely fast, efficient application performance.

The applicom® software package includes:

- Graphical configuration software.
- Test and network diagnostic tools.
- Data servers
  - ✓ OPC DA v1.0a, v2.05 and v3.0 (including an OPC client with its source code)
  - ✓ Wonderware I/O Server (DDE, FastDDE, SuiteLink)
- Development libraries
  - ✓ DLL Library
  - ✓ MS Visual Studio (.NET/C#/VB/C++/C), Borland Delphi, Windev
  - ✓ National Instruments (LabWindows CVI, LabVIEW/VI)



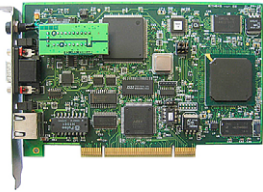
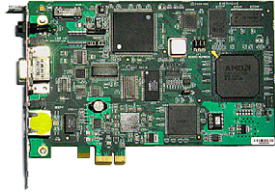
- Configuration Software -



- OPC Server -

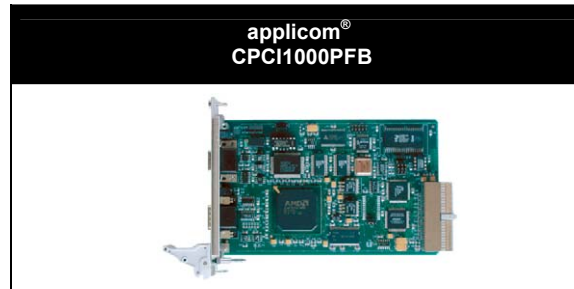


## Technical data

	applicom® PCU1500PFB / PCU1500S7	applicom® PCIE1500PFB / PCIE1500S7
		
<b>Key Benefits</b>	<ul style="list-style-type: none"> <li>• <b>Universal PCI 3.3 V / 5V (PCI-X compatible)</b></li> <li>• <b>RoHS compliant</b></li> <li>• <b>On-board processor</b></li> </ul>	<ul style="list-style-type: none"> <li>• <b>PCI Express 1x</b></li> <li>• <b>RoHS compliant</b></li> <li>• <b>On-board processor</b></li> </ul>
<b>Hardware</b>		
<b>Unit</b>	PCI 2.2, short card, single slot, 3.3V/5V	PCI Express 1x, rev 1.0a
<b>Processor</b>	AMD SC520 - 133 MHz	AMD SC520 - 133 MHz
<b>ASIC</b>	–	–
<b>Memory</b>	16 Mbytes SDRAM	16 Mbytes SDRAM
<b>Flash Memory</b>	4 Mbytes	4 Mbytes
<b>Interruption</b>	Hardware Plug&Play	Hardware Plug&Play
<b>DPRAM Address</b>	Hardware Plug&Play (32 Kbytes)	Hardware Plug&Play (32 Kbytes)
<b>Discrete Input</b>	Opto-coupled discrete input, Voltage -> +10 to +30 DC or 24 V AC (50-60 Hz)	Opto-coupled discrete input Voltage -> DC +10 to +30 or AC 24 V (50 to 60 Hz)
<b>Discrete Output</b>	« Watchdog » output contact free from potential, (floating) (24V DC, 0.25A)	« Watchdog » output contact free from potential, (floating) (24V DC, 0.25A)
<b>Dimensions (LxW)</b>	168mm x 107mm (6.61" x 4.21")	168mm x 107mm (6.61" x 4.21")
<b>Consumption</b>	5.5 W	5.5 W
<b>Operating T°</b>	0° C (32° F) ↔ +65° C (149° F)	0° C (32° F) up to +65° C (149° F)
<b>Storage T°</b>	-40° C (-40° F) ↔ +85° C (185° F)	-40° C (-40° F) up to +85° C (185° F)
<b>RoHS compliant</b>	Yes	Yes
<b>EMC Compliance<sup>(1)</sup></b>	EN55022 Class B, EN61000-6-2, EN61000-3-2, EN61000-3-3	EN55022 Class B, EN61000-6-2, EN61000-3-2, EN61000-3-3
<b>Communication port</b>		
<b>Port type</b>	1 Profibus port (EN 50170)	1 Profibus port (EN 50170)
<b>Connector</b>	Profibus D-Sub, 9 pin, female	Profibus D-Sub, 9 pin, female
<b>LED Indicator</b>	2 leds: TX / RX	1 Status LED / 1 Bus Fault LED
<b>Electrical Interface</b>	RS485 optical insulation (500 V) (optional: Profibus D-Sub 9-pin attach vertical connector with diag.)	RS485 with galvanic insulation (500 volts)
<b>Baud Rate</b>	9600 kbps ↔ 1,5 Mbps	9600 kbps ↔ 12 Mbps
<b>Supported Protocols</b>		
<b>Protocol</b>	<p><b>PCU1500PFB</b></p> <ul style="list-style-type: none"> <li>• Profibus DP-V0 (Master)</li> <li>• S7 / MPI (Master)</li> <li>• PPI/PPI+ (Master)</li> <li>• Send/Receive on FDL</li> <li>• FDL S5 (Master)</li> </ul> <p><b>PCU1500S7</b></p> <ul style="list-style-type: none"> <li>• S7 / MPI (Master)</li> <li>• PPI/PPI+ (Master)</li> <li>• Send/Rec on FDL</li> </ul>	<p><b>PCIE1500PFB</b></p> <ul style="list-style-type: none"> <li>• Profibus DP-V0 (Master)</li> <li>• S7 / MPI (Master)</li> <li>• PPI/PPI+ (Master)</li> <li>• Send/Receive on FDL</li> <li>• FDL S5 (Master)</li> </ul> <p><b>PCIE1500S7</b></p> <ul style="list-style-type: none"> <li>• S7 / MPI (Master)</li> <li>• PPI/PPI+ (Master)</li> <li>• Send/Rec on FDL</li> </ul>



## Technical data



Key Benefits	
	<ul style="list-style-type: none"> <li>• <b>CompactPCI 3U</b></li> <li>• <b>On-board processor</b></li> </ul>
Hardware	
<b>Unit</b>	CompactPCI 3U board, 5V
<b>Processor</b>	AMD SC520 – 133 MHz
<b>ASIC</b>	ASPC2
<b>Memory</b>	8 M Byte dynamic RAM
<b>Flash Memory</b>	512 Kbytes
<b>Interruption</b>	Hardware Plug&Play
<b>DPRAM Address</b>	Hardware Plug&Play (32 Kbytes)
<b>Discrete Input</b>	ns
<b>Discrete Output</b>	ns
<b>Dimensions (LxW)</b>	100mm x 160mm (3.93" x 6.29") - 3U
<b>Consumption</b>	5 W (max. 0.8A)
<b>Operating T°</b>	0° C (32° F) ↔ +65° C (149° F)
<b>Storage T°</b>	-40° C (-92° F) ↔ +80° C (176° F)
<b>RoHS compliant</b>	No
<b>EMC Compliance<sup>(1)</sup></b>	EN55022 Class B, EN61000-6-2, EN61000-3-2, EN61000-3-3
Communication port	
<b>Port type</b>	1 Profibus port (EN 50170)
<b>Connector</b>	Profibus D-Sub, 9 pin, female
<b>LED Indicator</b>	1 Status LED / 1 Bus Fault LED
<b>Electrical Interface</b>	RS485 with galvanic insulation (500 volts)
<b>Baud Rate</b>	9600 kbps ↔ 12 Mbps
Supported Protocols	
<b>Protocol</b>	<ul style="list-style-type: none"> <li>• Profibus DP-V0 (Master &amp; Slave)</li> <li>• S7 / MPI (Master)</li> <li>• PPI/PPI+ (Master)</li> <li>• Send/Rec on FDL</li> </ul>

# Profibus Network Interface Cards



- Profibus backplanes -



- Profibus gateways -



- Profibus connectivity -



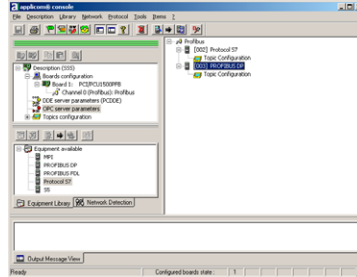
- Profibus D-Sub with diagnostic -



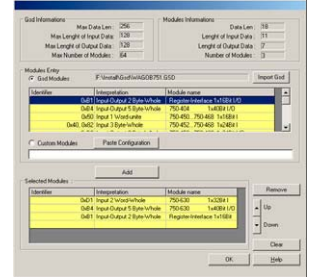
- IP67 & IP 20 I/O modules -

## Software tools

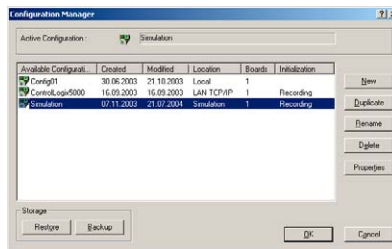
The core of applicom<sup>®</sup> solutions lies in effective software tools enabling fast integration of industrial communication into your applications.



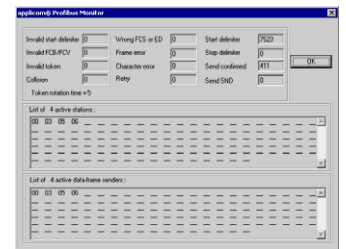
- Configuration Software -



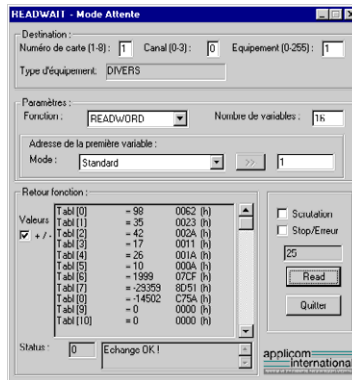
- GSD Editor -



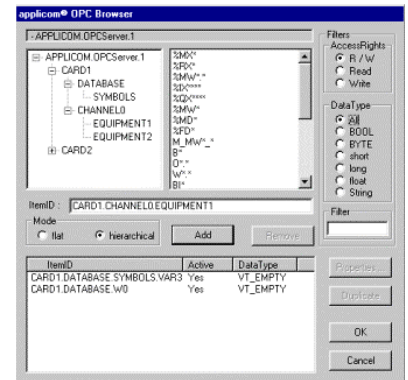
- User's configuration manager -



- Profibus Troubleshooting Tool -



- Testing tools -



- OPC Browser -

## Ordering Information

Part Number	SAP	Product description
APP-PFB-PCU-C	1120110004	applicom <sup>®</sup> PCU1500PFB Full Profibus 1.5Mb card, PCI 3.3V/5V bus (PCI-X compatible), RoHS compliant
APP-PFB-PCIE	1120115026	applicom <sup>®</sup> PCIE1500PFB Full Profibus 1.5Mb card, PCI Express 1x bus, RoHS compliant
APP-PS7-PCU-C	1120110006	applicom <sup>®</sup> PCU1500PFB Profibus Simatic <sup>®</sup> S7 1.5Mb card, PCI 3.3V/5V bus (PCI-X compatible), RoHS compliant
APP-PS7-PCIE	1120115027	applicom <sup>®</sup> PCIE1500PFB Profibus Simatic <sup>®</sup> S7 1.5Mb card, PCI Express 1x bus, RoHS compliant
APP-PFB-CPI-C	1120185003	applicom <sup>®</sup> CPCI1000PFB Full Profibus 12Mb card, CompactPCI 3U

Other related products: COMBO Ethernet+Profibus solutions (PCI Universal / PCI Express). Profibus-DP Master&Slave for PC-Based control (PCI Universal, PC/104, CompactPCI). Low cost S7/MPI solutions (PCI Universal, USB).

To contact us: [www.woodhead.com](http://www.woodhead.com)

North America: US: +1 (630) 969-4550 – Canada: +1 519 725 5136  
 Europe: France: +33 2 32 96 04 20 – Germany: +49 7252 94 96 0 – Italy: +39 (02) 950551 – UK: +44 (1252) 720720  
 Asia: China: +86 21-5048-0889 Singapore: +65 6-268-6868 – Japan: +81 46-265-2325 – Korea: +82 31-492-9000

Brad is a registered trademark and BradControl, BradCommunications, applicom, Direct-Link and SST are trademarks of Molex Incorporated. © 2010 Molex