

ITEM	PART#	DESCRIPTION	QTY	UOM
A	701070002	SL WtW Conn SR WO/MtgE Opt A 3Ckt	1	PC
B	16020107	SL Male Crp Term 22-24awg Tin Reel	3	PC
C	--	PAPER PRINTED PAPER WHITE	1	PC

FROM	TO	DESCRIPTION	COLOR
A1	--	1X22AWG DISC MPPE BK UL11028	BLACK
A2	--	1X22AWG DISC MPPE BK UL11028	BLACK
A3	--	1X22AWG DISC MPPE BK UL11028	BLACK

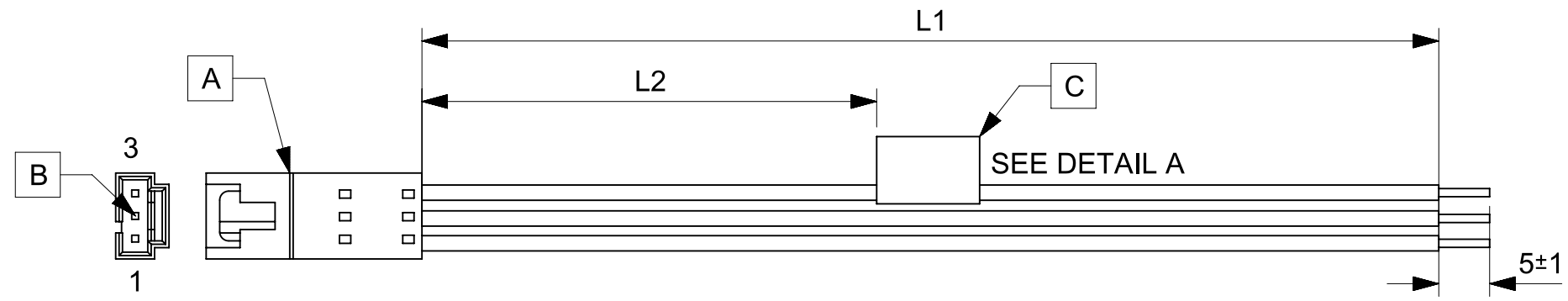


TABLE			
PART NUMBER	L1	L2	TITLE
2162731030	50±3	13 REF	SL POSITIVE LOCK P-S 3CKT 50MM Sn
2162731031	100±5	38 REF	SL POSITIVE LOCK P-S 3CKT 100MM Sn
2162731032	150±8	63 REF	SL POSITIVE LOCK P-S 3CKT 150MM Sn
2162731033	300±10	138 REF	SL POSITIVE LOCK P-S 3CKT 300MM Sn
2162731034	600±10	288 REF	SL POSITIVE LOCK P-S 3CKT 600MM Sn

NOTES

1. Connector view shown is from mating side.
2. Free ends must be stripped, twisted & tinned. The length of tinning is 5±1mm. Tinning dia must be 0.9mm Max.
3. Label text must be 2mm max. in height with Arial font.
4. Label must be wrapped in Flag type on a single cable.

MOLEX P/N
MOLEX
BATCH WK/YR
DETAIL A

REVISION			
DATE	REV	DESCRIPTION	CHANGER
2020/05/05	A	INITIAL RELEASE	ARAJU

FUNCTIONAL SYMBOLS $\frac{E}{A} = 0$ $\frac{E}{E} = 0$ $\frac{E}{P} = 0$	THIS DRAWING CONTAINS INFORMATION THAT IS PROPRIETARY TO MOLEX ELECTRONIC TECHNOLOGIES, LLC AND SHOULD NOT BE USED WITHOUT WRITTEN PERMISSION		SCALE mm NTS		CURRENT REV DESC: EC NO: 642836 DRWN: ARAJU 2020/05/05 CHK'D: RDESAI01 2020/08/05 APPR: RDESAI01 2020/08/05				
	GENERAL TOLERANCES (UNLESS SPECIFIED) ANGULAR TOL ± °		SEE TABLE						
	DIVISIONAL SYMBOLS 4 PLACES ± 3 PLACES ± 2 PLACES ± 1 PLACE ± 0 PLACES ±		INITIAL REVISION: DRWN: ARAJU 2020/05/05 APPR: RDESAI01 2020/08/05			PRODUCT CUSTOMER DRAWING			
	DRAFT WHERE APPLICABLE MUST REMAIN WITHIN DIMENSIONS		THIRD ANGLE PROJECTION			DRAWING SERIES: A4-SIZE 216273		DOCUMENT NUMBER: 2162731030	

RELEASE STATUS	P1	RELEASE DATE	2020/08/05	05:06:38
----------------	----	--------------	------------	----------