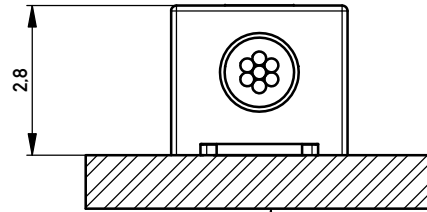
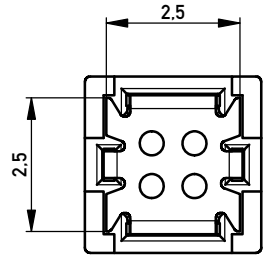
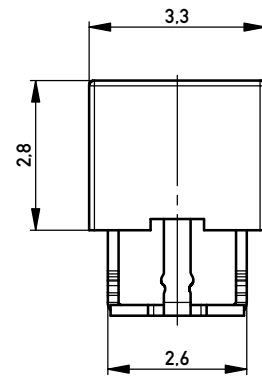
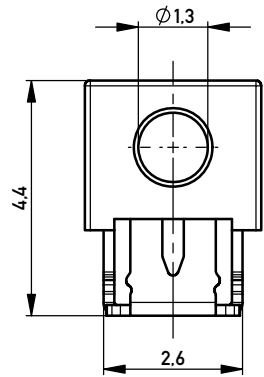
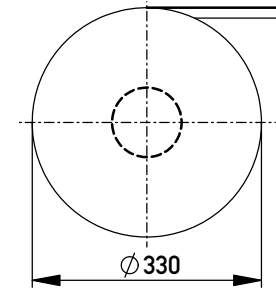


Terminal verpresst
Terminal pressed

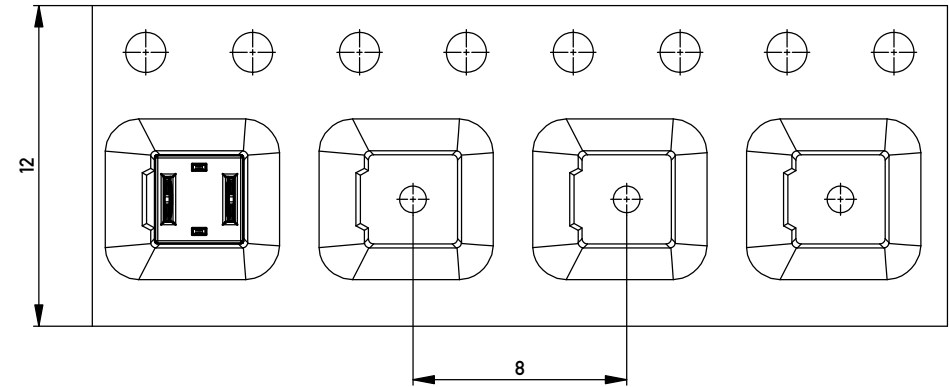


Leiterplatte
PCB

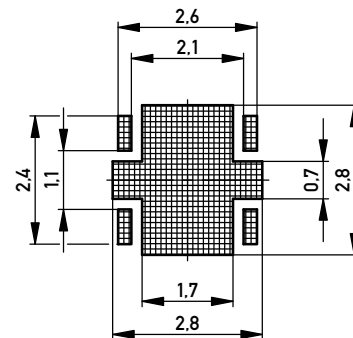
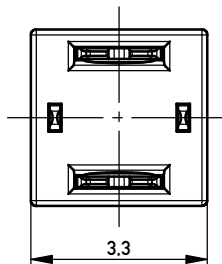
Verpackt in Gurtverpackung
Tape on Reel Packaging
Verpackungseinheit: 2000 Stück
Packaging unit: 2000 pcs



Abspulrichtung - Reel off Direction



Leiterplatten-Layout Vorschlag
PCB-Layout Proposal



*AWG 22/7 D 1,3 ohne Kabelanschlag
*AWG 22/7 D 1,3 without cable stop

Information:		Tolerances		Scale	10:1
All rights reserved. Only for Information. To ensure that this is the latest version of this drawing, please contact one of the ERNI companies before using.		All Dimensions in mm		Designation	
Subject to modification without prior notice. Drawing will not be updated.				Schneidklemmterminal * IDC-Terminal*	
www.ERNI.com		454302		I A3	
a	05.12.2012	Class		IDC-TERM	
Index	Date				

Copyright by ERNI GmbH
Proprietary notice pursuant to ISO 9006 to be observed.