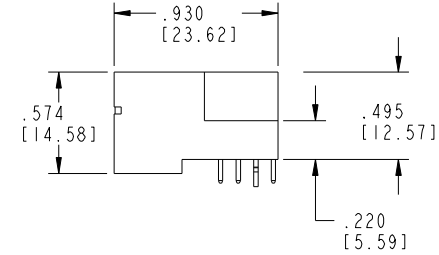
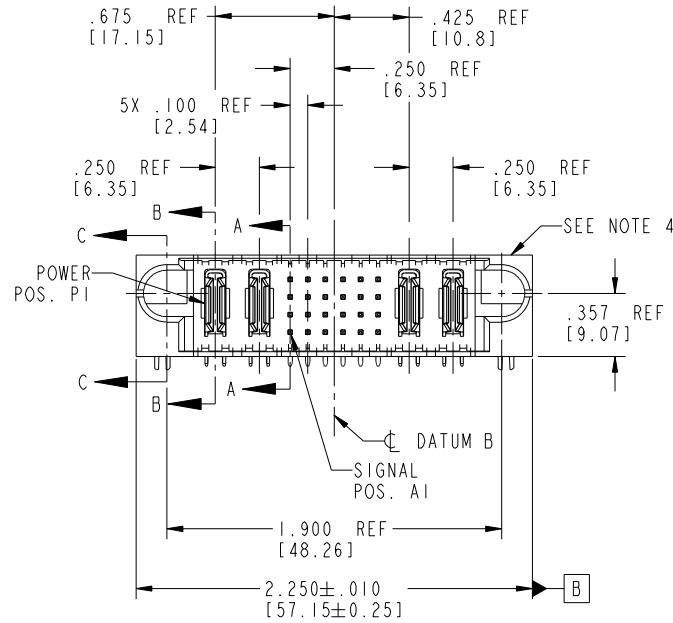


Tous droits strictement reserves. Reproduction ou communication a des tiers interdite sous quelque forme que ce soit sans autorisation écrite du propriétaire. Propriete de c FCI. Droits de reproduction FCI.

All rights strictly reserved. Reproduction or issue to third parties in any form whatever is not permitted without written authority from the proprietor. Property of FCI. Copyright FCI.

PRODUCT NO.	ROWS	POWER		SIGNAL						POWER			
		E1	P1	P2	1	2	3	4	5	6	P3	P4	E2
51730-097... NOTE:3	D C B A												



CODE	DIM "M" MATING LENGTH	CONTACT TYPE
H	.220 [5.59]	SIGNAL
R	.270 [6.86]	SIGNAL
S	.270 [6.86]	SIGNAL
T	.270 [6.86]	SIGNAL
U	.270 [6.86]	SIGNAL
PA	N/A [N/A]	POWER
HA	N/A [N/A]	HOLD-DOWN

mat'l code				SEE NOTE 2		tolerances unless otherwise specified		CUSTOMER	
ltr	ecn no.	dr	date	linear	.XX±.01/0.X±0.3	angles	0°±?	COPY	
A	V04-0621	TAB	06/10/04		.XXX±.005/0.XX±0.13	enr	M. GRAY	projection	
B	V04-0640	TAB	06/16/04		.XXX±.0020/0.XXX±0.051	chr	M. GRAY	INCH/MM	
C	DG05-0549	CS	12/19/05			appd	M. GRAY	scale	
D	DG08-0253	SH	09/13/08					1:1	
sheet index	revision sheet	D	D	D	D				
		1	2	3	4				

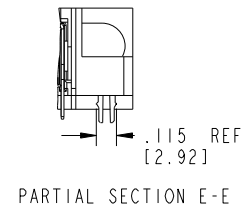
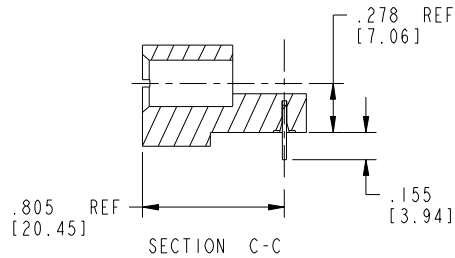
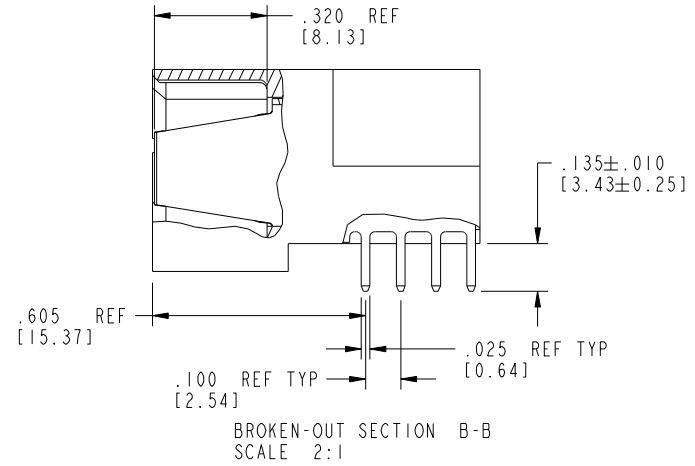
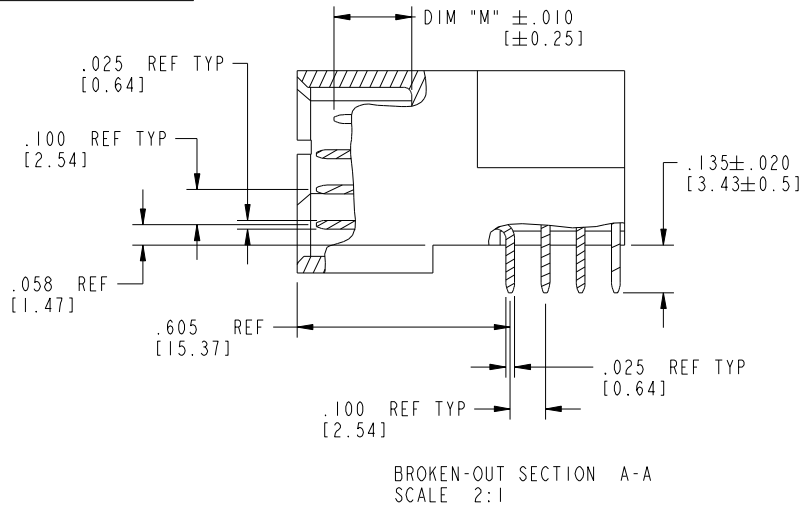
www.fciconnect.com		<b>FCI</b>	
title		2P + 24S + 2P	
RIGHT ANGLE SOLDER HEADER		product family PwrBlade	
code	213	size	dwg no
sheet	1 of 4	scale	A
51730-097		cage code 22526	

Pro/E

Tous droits strictement réservés. Reproduction ou communication à des tiers interdite sous quelque forme que ce soit sans autorisation écrite du propriétaire. Propriété de c.FCI. Droits de reproduction FCI.

All rights strictly reserved. Reproduction or issue to third parties in any form whatever is not permitted without written authority from the proprietor. Property of FCI. Copyright FCI.

PRODUCT NUMBER  
51730-097--  
NOTE: 3



mat'l code		SEE NOTE 2		tolerances unless otherwise specified		CUSTOMER		FCI	
ltr	ecn no.	dr	date	linear	.XX±.01/0.X±0.3	COPY		www.fciconnect.com	
D					.XXX±.005/0.XX±0.13	projection		title 2P + 24S + 2P	
				angles	.XXX±.0020/0.XXX±0.051			RIGHT ANGLE SOLDER HEADER	
				dr	0°±2°	INCH/MM		product family PwrBlade code 213	
				enr	T. BRUNGARD 06/10/04	scale		size dwg no 213	
				chr	M. GRAY 06/10/04	1:1		sheet 2 of 4	
				appd	M. GRAY 06/10/04	A		51730-097	
sheet index	revision sheet								

Pro/E

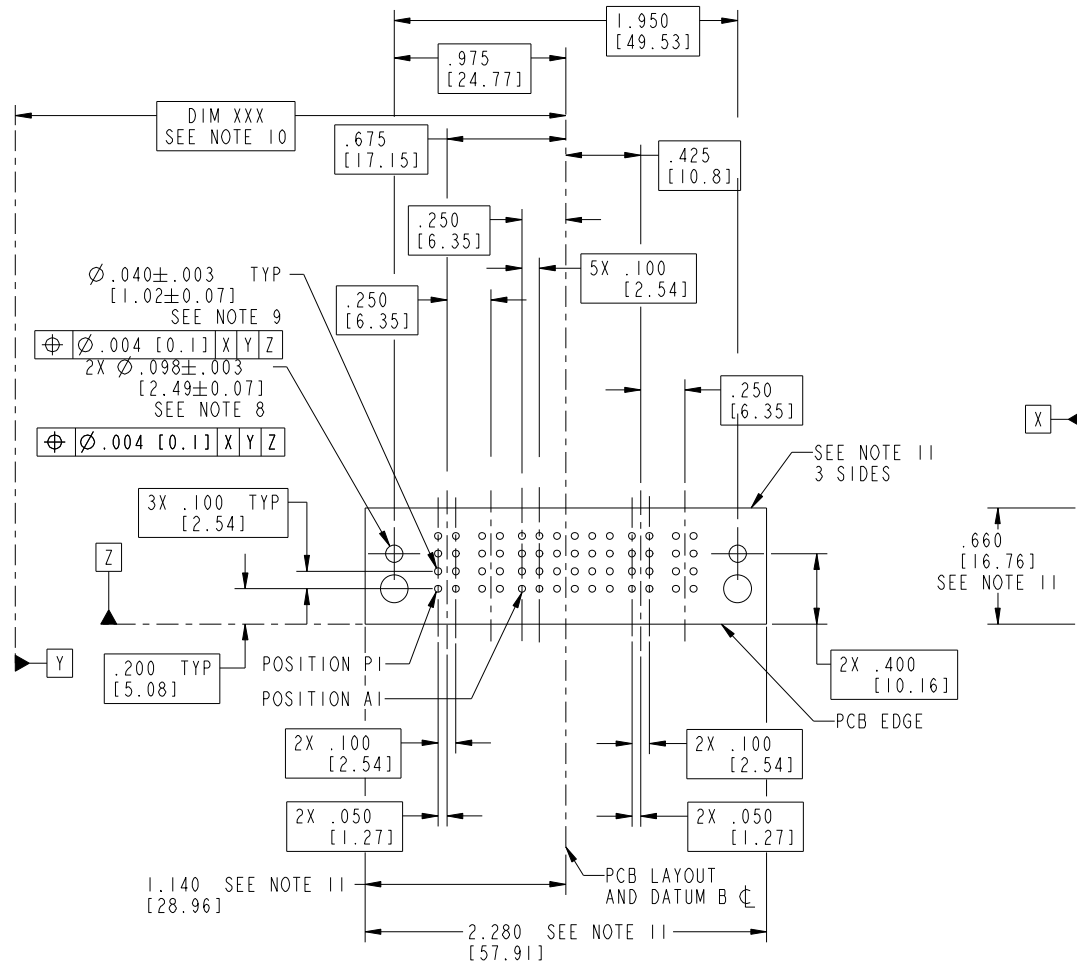
cage code 22526

Tous droits strictement réservés. Reproduction ou communication à des tiers interdite sous quelque forme que ce soit sans autorisation écrite du propriétaire. Propriété de c.FCI. Droits de reproduction FCI.



All rights strictly reserved. Reproduction or issue to third parties in any form whatever is not permitted without written authority from the proprietor. Property of FCI. Copyright FCI.

PRODUCT NUMBER  
51730-097--  
NOTE: 3



RECOMMENDED PCB LAYOUT

mat'l code		SEE NOTE 2		tolerances unless otherwise specified		CUSTOMER		FCI		www.fciconnect.com	
ltr	ecn no.	dr	date	linear	.XX±.01/0.X±0.3	projection	COPY	title 2P + 24S + 2P			
D				linear	.XXX±.005/0.XX±0.13	projection		RIGHT ANGLE SOLDER HEADER			
				angles	.XXX±.0020/0.XXX±0.051	projection		product family PwrBlade code 213			
				dr	0°±2°	projection	INCH/MM	size		sheet	
				enr	T. BRUNGARD 06/10/04	projection	1:1	dwg no		3 of 4	
				chr	M. GRAY 06/10/04	projection		A 51730-097			
				appd	M. GRAY 06/10/04	projection					
sheet index	revision sheet										

cage code 22526

Pro/E

Tous droits strictement reserves. Reproduction ou communication a des tiers interdite sous quelque forme que ce soit sans autorisation écrite du propriétaire. Propriete de c FCI. Droits de reproduction FCI.

All rights strictly reserved. Reproduction or issue to third parties in any form whatever is not permitted without written authority from the proprietor. Property of FCI. Copyright FCI.

PRODUCT NUMBER  
51730-097--  
NOTE: 3

NOTES:

1. DIMENSIONS AND TOLERANCES ARE IN ACCORDANCE WITH ASME Y14.5M, 1994 UNLESS OTHERWISE SPECIFIED.

CONNECTOR NOTES:

- 2. HOUSING MATERIAL: UL 94 V-0 GLASS FILLED  
HIGH-TEMP THERMOPLASTIC  
POWER CONTACT MATERIAL: COPPER ALLOY  
SIGNAL PIN MATERIAL: COPPER ALLOY
  - 3. PLATING:  
SEE ITEM 1 & 2 IN PRINT 10064183 FOR PLATING SPEC OF 51730-097 AND 51730-097LF RESPECTIVELY
  - 4. MANUFACTURER'S NAME, P/N, AND DATE CODE TO APPEAR ON THIS SURFACE.
  - 5. PRODUCT SPECIFICATION GS-12-149.  
APPLICATION SPECIFICATION BUS-20-067.
  - 6. PACKAGED IN TRAYS.
- PCB NOTES:
- 7. ALL HOLE DIAMETERS ARE FINISHED HOLE SIZE.
  - 8. MOUNTING HOLES, WHERE APPLICABLE, ARE UNPLATED.
  - 9.  $\varnothing .0453 \pm .0010$  [1.151  $\pm$  0.025] DRILLED HOLES PLATED WITH .0003 [0.008] MIN SnPb OVER .001 [0.03] TO .003 [0.08] Cu PLATING TO ACHIEVE  $\varnothing .040 \pm .003$  [1.02  $\pm$  .07] HOLE.
  - 10. "DIM XXX" TO BE DETERMINED BY THE CUSTOMER.
  - 11. CONNECTOR KEEP-OUT ZONE.
- 12: A  $\triangle$  SYMBOL WILL BE NEXT TO ANY DIMENSION, VIEW, OR NOTE WHICH HAS BEEN MODIFIED WITH CURRENT DRAWING VERSION.

mat'l code		SEE NOTE 2		tolerances unless otherwise specified		CUSTOMER		FCI		www.ficconnect.com		
ltr	ecr no.	dr	date	linear	.XX±.01/0.X±0.3	COPY						
D					.XXX±.005/0.XX±0.13	projection		title 2P + 24S + 2P				
				angles	.XXX±.002/0.XXX±0.051			RIGHT ANGLE SOLDER HEADER				
				dr	T. BRUNGARD 06/10/04	INCH/MM		product family PwrBlade		code 213		
				enrg	M. GRAY 06/10/04	scale		size dwg no		sheet 213		
				chr	M. GRAY 06/10/04	1:1		A 51730-097		4 of 4		
				appd	M. GRAY 06/10/04							
sheet index	revision sheet											

cage code 22526