



xPrintServer® Cloud Print Edition Quick Start Guide

WHAT'S INSIDE



Quick Start Guide



xPrintServer



Power supply with regional adapters



3' Ethernet Cable



Mounting Bracket & 2 Screws



Rubber Feet (4)

1 BEFORE YOU BEGIN

1. If you intend to connect a USB printer to the xPrintServer™, please be sure to test the printer from the Windows or Mac computer that it is directly attached to before proceeding.
2. xPrintServer Cloud Print Edition is made to work with Google's Cloud Print service. In order to use Google Cloud Print, you must first have a Google account. If you don't already have one, go to: <https://accounts.google.com/SignUp>.
3. xPrintServer will auto-discover all network (wired and wireless) printers located on the same subnet. Printers on a different subnet must be manually configured. Refer to the User's Guide for instructions.
4. The xPrintServer requires Internet access during set-up and for printing functionality (via a router with Wi-Fi®).

2 HARDWARE INSTALLATION

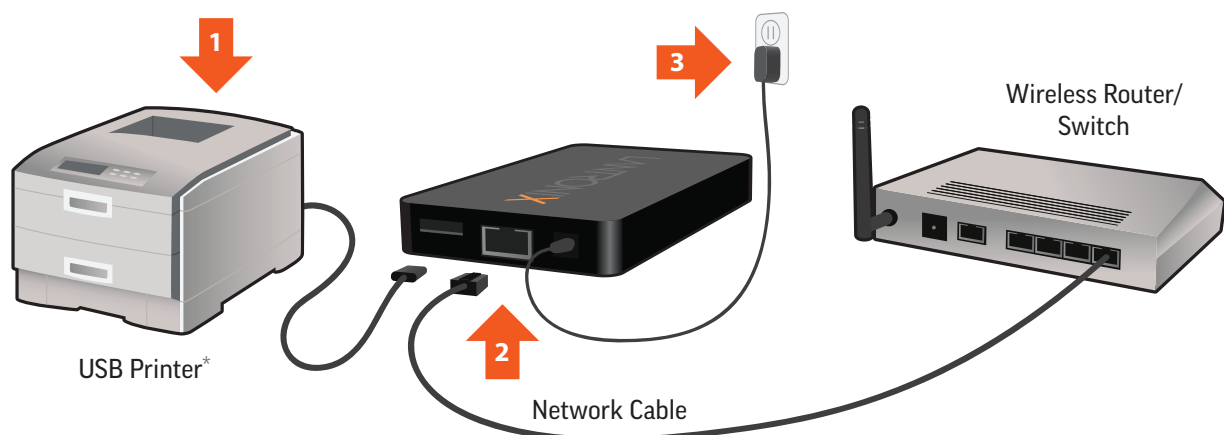
RACK MOUNT

1. A versatile mounting bracket and screws are supplied to assist in easily installing and mounting xPrintServer into a server rack in various orientations (e.g., horizontal or vertical). Refer to the User's Guide for mounting instructions.

DESKTOP

1. Place the xPrintServer upside down on a smooth, flat surface.
2. Peel off the rubber feet from the adhesive strip and place them adhesive-side down onto each corner of the xPrintServer.
3. Turn the xPrintServer over so that it is resting on the rubber feet.

3 QUICK CONNECT



- 1 Connect USB printer cable to USB port of xPrintServer (if any).
- 2 Connect network cable from wireless router/switch to xPrintServer.
- 3 Power on the xPrintServer with supplied power adapter.

Auto Set-Up Process: The xPrintServer will automatically set-up your printers (USB & network) as soon it is connected, as shown above. The glowing "X" will blink quickly for about 30 seconds, then it will pulse slowly to show it's ready for printing. *Connecting a USB printer to the xPrintServer is not required for the xPrintServer to work or to set-up network printers.



xPrintServer® Cloud Print Edition Quick Start Guide

4 SETTING UP GOOGLE CLOUD PRINT™ WITH YOUR XPRINTSERVER

1- Launch and log in to the Admin interface in your xPrintServer—There are 2 ways to get to the Admin interface:

NOTE: Your device (smartphone/tablet/PC) must be on the same network (WiFi/wired) that your xPrintServer is on.

a) Scan QR code on the underside of your xPrintServer—Use a QR code reader on your Android™ smartphone or tablet to read the QR code on the underside of the xPrintServer. The QR code reader will display a link. Select this link to go directly to the Admin interface of the xPrintServer. A login window will pop-up for you to enter a username and password. If you don't have a QR code reader app, one can be downloaded for free from Google Play™ store (most QR code readers will work, however the ZXing Team based QR code reader is recommended).

QR Code label on your xPrintServer



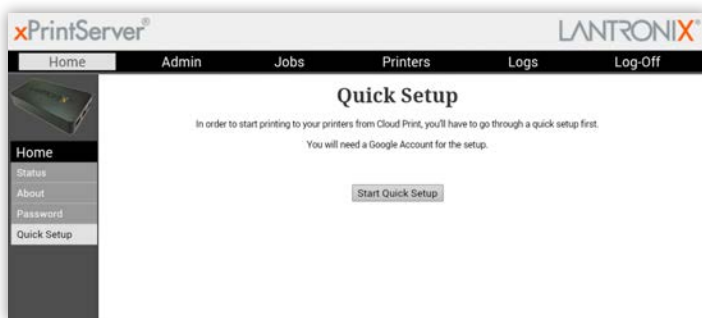
QR Code Serial #

b) Go to FindMyXPS.com using a web browser - Go to FindMyXPS.com with a smartphone, tablet or PC web browser. Enter the serial number (SN 12 alphanumeric characters) printed on the QR code label on the underside of your xPrintServer. A login window will pop-up for you to enter a username and password.

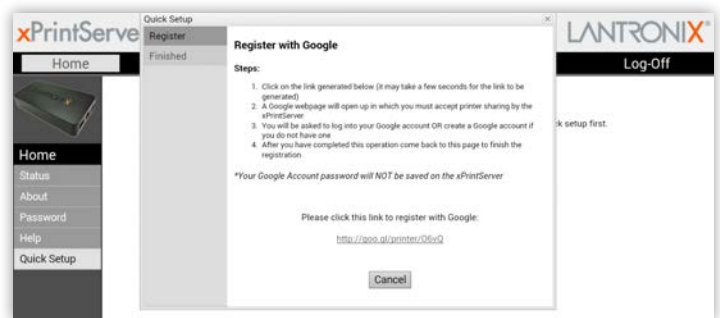
or

xPrintServer default USER NAME= admin, PASSWORD= PASS (case sensitive). You can change these once logged in to the xPrintServer.

2- After you log in, you will see the Quick Setup page. Click the Quick Setup button to begin the setup.



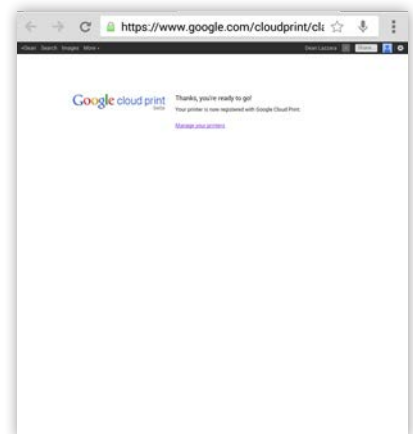
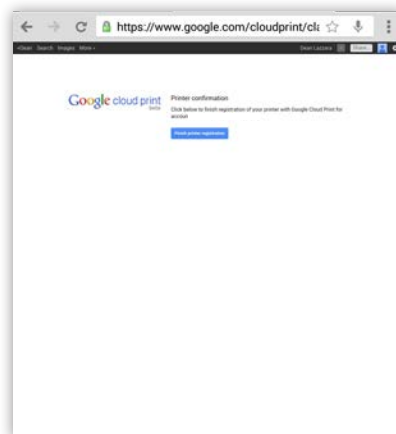
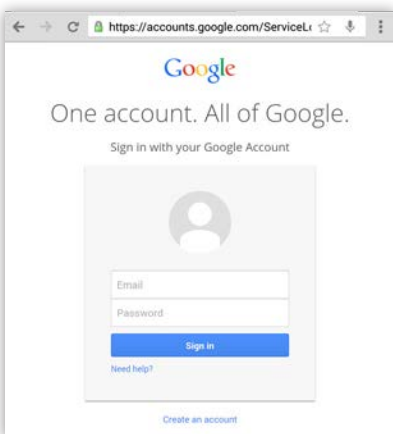
3- Register with Google® by clicking the link that will auto-generate. It may take a few seconds for the link to auto-generate.



4- A new, secure Google® webpage will open up for you log in to or create a Google account. If you recently logged in to Google, the window in the next step will open up. NOTE: Only one Google account can be an xPrintServer admin at a time. If more than one person needs access to admin functions, consider using a Google account that can be shared.

5- Complete the Google registration by clicking the "Finish Printer Registration" button.

6- The next page will contain a "Manage Your Printers" link. You do not need to click on this link. Instead go back to the xPrintServer Admin browser window. It should be open in a previous browser tab.





xPrintServer® Cloud Print Edition Quick Start Guide

4 SETTING UP GOOGLE CLOUD PRINT™ WITH YOUR XPRINTSERVER continued

7- When you go back to the xPrintServer Admin window. You should see the message "Finished! Registration Successful" confirming you are done registering with Google Cloud Print. Select the TRY IT NOW button to print a test page.



8- A Google Cloud Print window will open. You will see the printer(s) automatically registered during the xPrintServer setup. Select the printer you want to print a test page to. It can take a few minutes for Google Cloud Print to register and show your printer(s) - reload this window to refresh the list.



9- From the print preview page of the Document Test Page, select PRINT to send the print job to the printer. You may see additional print options depending on the printer model.



10- Once the test page is printed, go back to the xPrintServer Admin window and click OK to finish the registration.

Basic setup and registration for your xPrintServer is complete! Go to the next section to setup printing on your devices.

5 INSTALL FREE GOOGLE CLOUD PRINT APP ON YOUR ANDROID DEVICES

Android™ devices such as phones and tablets require the Google Cloud Print app (created by Google) to print using Google Cloud Print and the xPrintServer Cloud Print Edition. The Google Cloud Print app is available free of charge through the Google Play Store and takes just a few seconds to install.

There are 2 ways to get the Google Cloud Print app:

1-Scan the QR code to the right with a QR code reader on your Android device. If you don't have a QR code reader app, one can be downloaded for free from Google Play™ store (most QR code readers will work, however the ZXing Team based QR code reader is recommended). Download the Google Cloud Print app to your Android device. Install the app on all Android devices you would like to print from.



2- Find the Google Play Store icon on your Android™ device to go to the Google Play™ store. Search for the Google Cloud Print app using the Play Store search tool. Download the Google Cloud Print app to your Android device. Install the app on all Android devices you would like to print from.



IMPORTANT:

- To enable printing on other Android devices, be sure that Google Cloud Print app is installed on those devices.
- To allow other users to print, be sure to add the Google account of the users to Google Cloud Print (see adding additional users in the xPrintServer User Guide).
- Chrome OS™ and Chromebooks™ do not require the Google Cloud Print app to be able to print via the xPrintServer Cloud Print Edition.

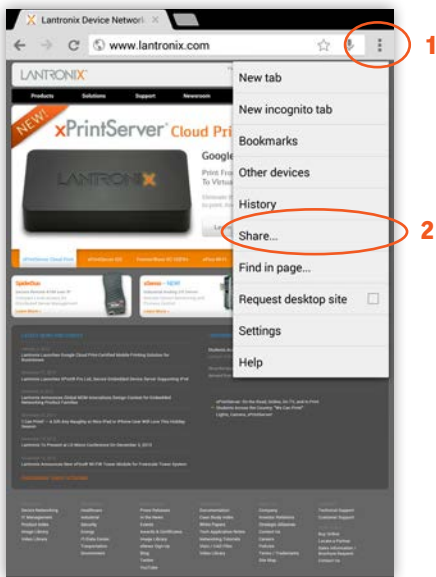


xPrintServer® Cloud Print Edition Quick Start Guide

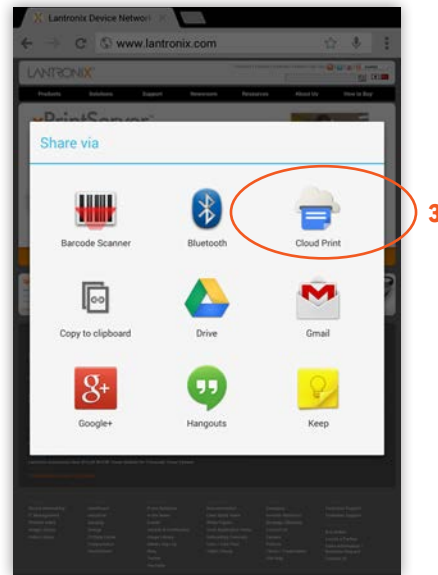
6 HOW TO PRINT FROM AN ANDROID™ BASED PHONE OR TABLET

Many apps (web browser, photo, email and productivity) for Android phones and tablets provide the ability to print through Google Cloud Print. Combined with xPrintServer Cloud Print Edition you can print to your existing printers (see Lantronix.com for compatible printers). Below are instructions for a typical scenario for printing from an Android device. Be sure that the Google Cloud Print app is installed on the Android device and that the Google account of the device's user has been added to Google Cloud Print (see adding additional users in the xPrintServer User Guide).

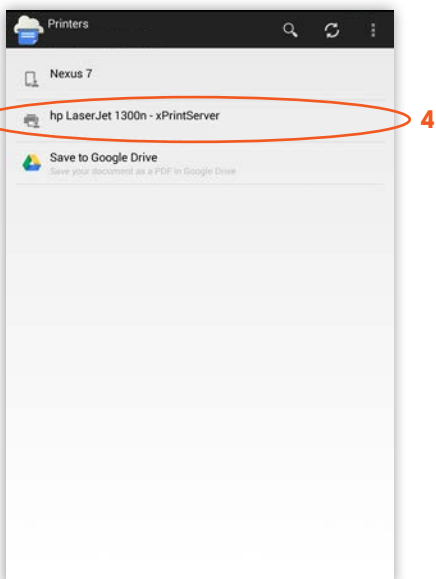
- 1- From within an app (web browser for example) select the OPTIONS drop down menu on top right.
- 2- Select SHARE... from dropdown options list.



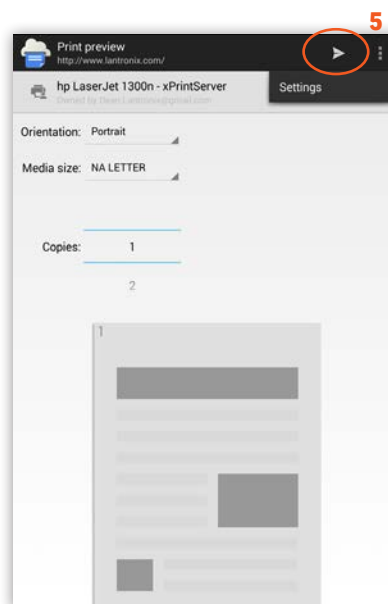
- 3- Select CLOUD PRINT (if you do not have the Google Cloud Print app please refer to section 5 of this Quick Start Guide).



- 4- Select a printer from the list of printers (you may see more than one depending on how many printers were auto-discovered / set-up on your network.)



- 5- From the Print Preview page, select the Share Action icon (top right) to send the print job to the printer. You may see additional print options on this page depending on the printer model.





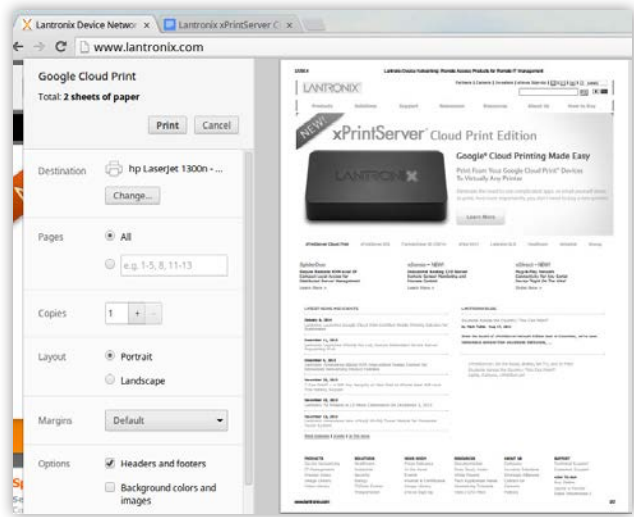
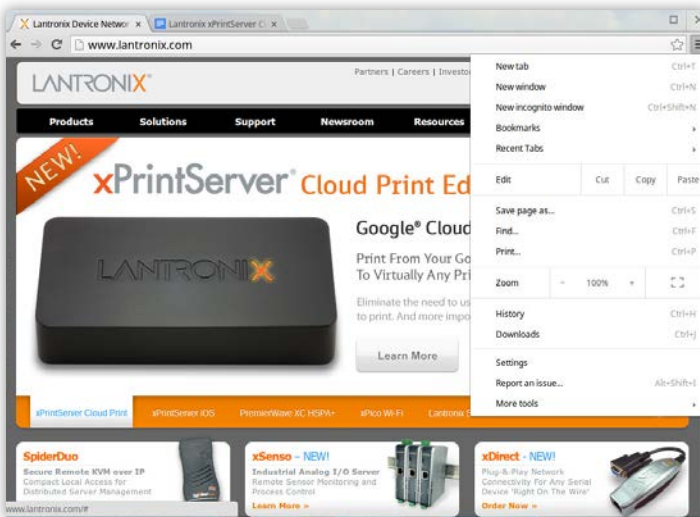
xPrintServer® Cloud Print Edition Quick Start Guide

7 HOW TO PRINT FROM CHROMEBOOK™ / CHROME OS™

Many apps (web browser, photo, email and productivity) for Android phones and tablets provide the ability to print through Google Cloud Print. Combined with xPrintServer Cloud Print Edition you can print to your existing printers (see Lantronix.com for compatible printers). Below are instructions for a typical scenario for printing from a Chromebook device.

1- From within the app (web browser for example) select the **OPTIONS** drop down menu on top right. Select **PRINT...** from dropdown options list.

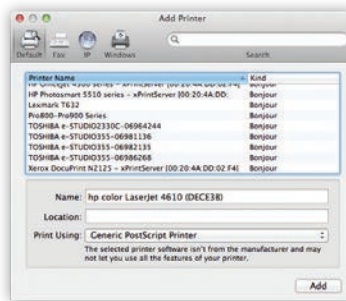
2- A Google Cloud Print window will open for you to select your printer and other print options. Select **PRINT** when ready to print.



8 HOW TO PRINT FROM MAC OS TO USB PRINTER(S) CONNECTED TO XPRINTSERVER

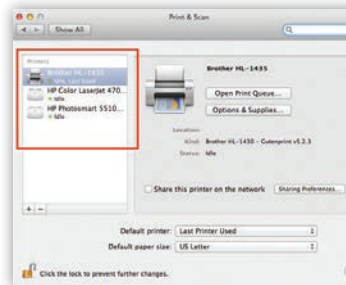
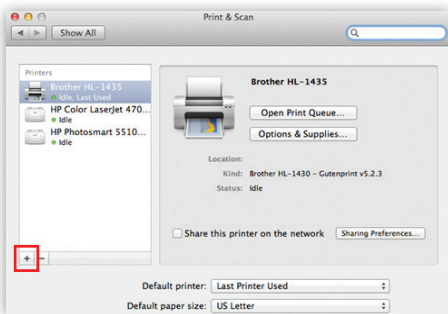
1- Go to **System Preferences, Hardware** and click **Print & Scan**.

3- A list of printers appear. Select the printer you wish to add and click on the **Add** button.



2- Click on the **+** button in the lower left corner

4- The printer is now added in your available list of printers and is ready to print.





xPrintServer® Cloud Print Edition Quick Start Guide

9 HOW TO PRINT FROM WINDOWS OS TO USB PRINTER(S) CONNECTED TO XPRINTSERVER

BEFORE YOU BEGIN

Ensure the USB printer is working and the printer drivers are installed on the computer before proceeding.

INSTALL BONJOUR PRINT SERVICES

1. Bonjour Print Services is an Apple application that allows discovery of printers connected to the xPrintServer from a Windows PC. Go to the web address below to download and install Bonjour Print Services for Windows v2.0.2 or higher

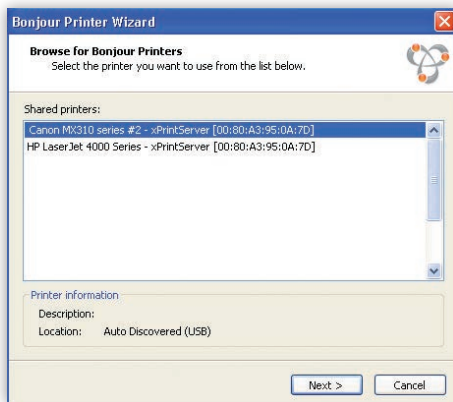
<http://support.apple.com/kb/DL999>

2. Follow the prompts to install Bonjour Print Services

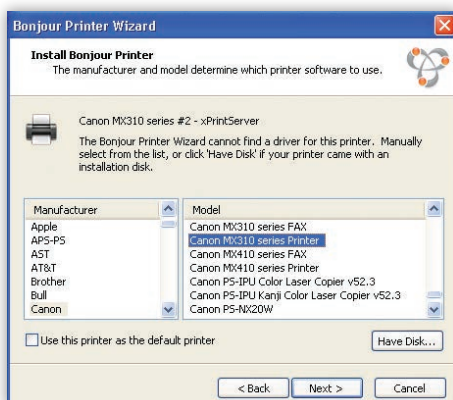
3. Find the **Bonjour Printer Wizard**  shortcut on your **Desktop** or in the **Start/All programs** menu and click to launch

Instructions for Windows XP

4. The Bonjour Printer Wizard appears with a list of discovered printers. Highlight the printer you wish to install.

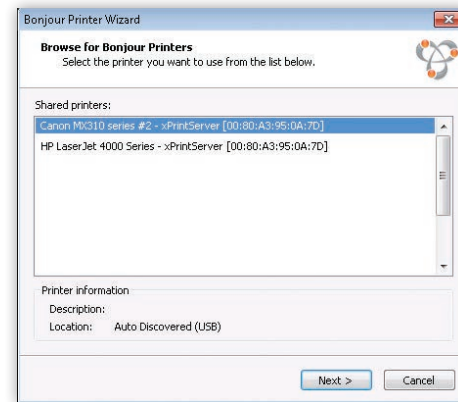


5. Search and select your printer by **manufacturer** and **model** number and click **Next**.

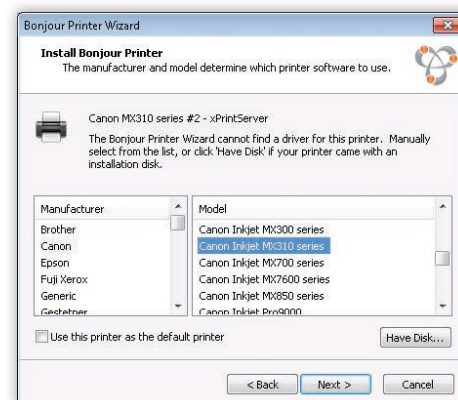


Instructions for Windows 7

4. The Bonjour Printer Wizard appears with a list of discovered printers. Highlight the printer you wish to install.



5. Search and select your printer by **manufacturer** and **model** number and click **Next**.



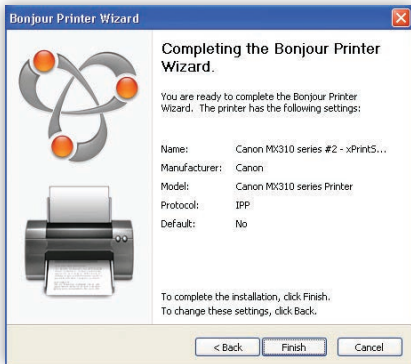


xPrintServer® Cloud Print Edition Quick Start Guide

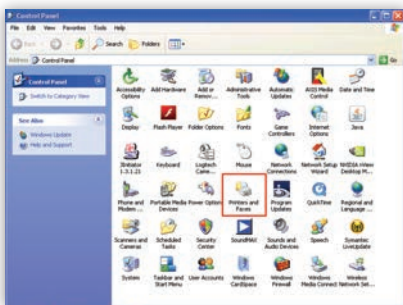
9 HOW TO PRINT FROM WINDOWS OS TO USB PRINTER(S) CONNECTED TO XPRINTSERVER continued

Instructions for Windows XP

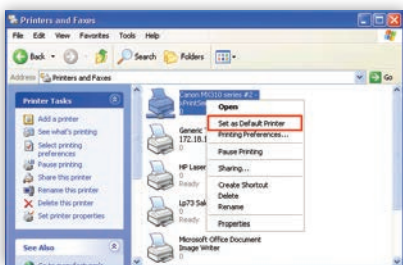
6. To complete the installation, click **Finish**.



7. If you wish to configure the printer as the default printer go to: **Start, Control Panel** and click on **Printers and Faxes**



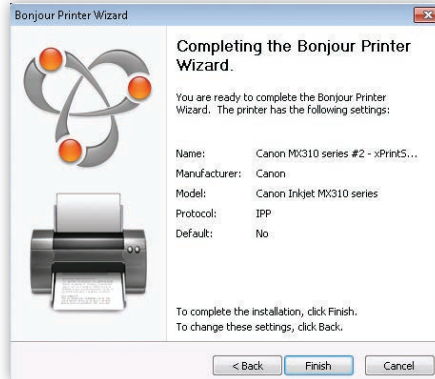
8. Select the printer and right click and select **Set as default printer**



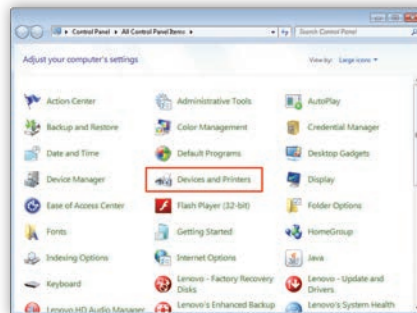
Congratulations! Add printer setup is now complete.

Instructions for Windows 7

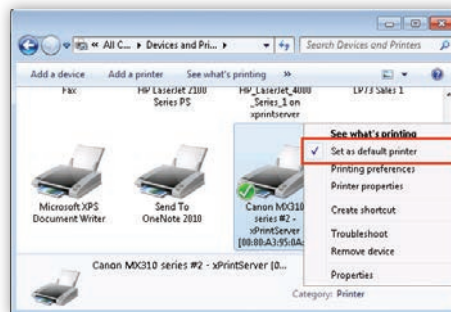
6. To complete the installation, click **Finish**.



7. If you wish to configure the printer as the default printer go to: **Start, Control Panel** and click on **Devices and Printers**



8. Select the printer and right click and select **Set as default printer**



Congratulations! Add printer setup is now complete.

10 CUSTOM SET-UP & XPRINTSERVER USER GUIDE

For complete User Guide and custom options – launch and log in to the Admin interface of your xPrintServer - see section 4, step 1 of this guide for login instructions.

Contact Technical Support

For technical support queries, visit <http://www.lantronix.com/support> or call (800) 422-7044 Monday – Friday from 6:00 a.m. – 5:00 p.m. Pacific Time, excluding holidays.

© 2014 Lantronix, Inc. All Rights Reserved

Lantronix and xPrintServer are trademarks or trademarks of Lantronix Inc. Google Cloud Print, Chrome OS, Chromebook and Android are trademarks of Google Inc., registered in the U.S. and other countries. Mac OS is a trademark or registered trademark of Apple Inc., in the U.S. and other countries. Windows is a trademark or registered trademark of Microsoft Corporation, in the U.S. and other countries. All other trademarks and trade names are the property of their respective holders. 900-669-R

