

ITEM	PART#	DESCRIPTION	QTY	UOM
A	19091046	CNA W/O 2.36MM DIA	1	PC
B	2091102	093 Female Term Chain Tin 14-20	4	PC
C	--	PAPER PRINTED PAPER WHITE	1	PC

FROM	TO	DESCRIPTION	COLOR
A1	--	1X14AWG DISC PVC BK UL1015 HOOKUP	BLACK
A2	--	1X14AWG DISC PVC BK UL1015 HOOKUP	BLACK
A3	--	1X14AWG DISC PVC BK UL1015 HOOKUP	BLACK
A4	--	1X14AWG DISC PVC BK UL1015 HOOKUP	BLACK

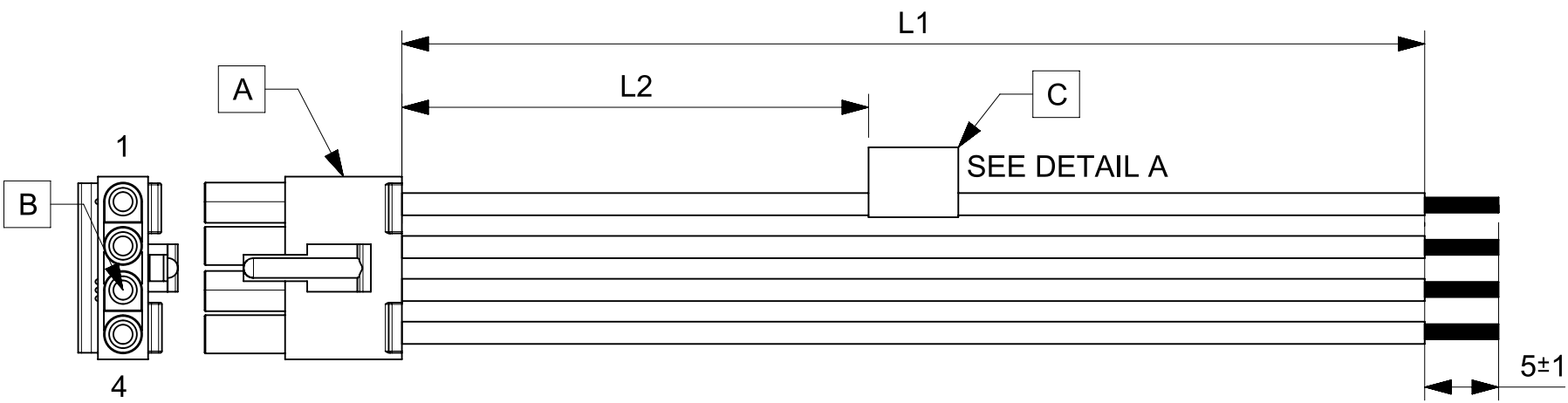


TABLE			
PART NUMBER	L1	L2	TITLE
2162911041	150±8	63 REF	STANDARD .093 4 CIRCUIT R TO S 150MM
2162911042	300±10	138 REF	STANDARD .093 4 CIRCUIT R TO S 300MM
2162911043	600±10	288 REF	STANDARD .093 4 CIRCUIT R TO S 600MM

- NOTES**
- Connector view shown is from mating side.
 - Free ends must be stripped, twisted & tinned. The length of tinning is 5±1mm. Tinning dia must be 2.4mm Max.
 - Label text must be 2mm max. in height with Arial font.
 - Label must be wrapped in Flag type on a single cable.

MOLEX P/N
MOLEX
BATCH WK/YR
DETAIL A

REVISION			
DATE	REV	DESCRIPTION	CHANGER
2020/06/22	A	INITIAL RELEASE	ARAJU

FUNCTIONAL SYMBOLS $\frac{E}{A} = 0$ $\frac{E}{E} = 0$ $\frac{E}{P} = 0$	DIMENSION UNITS: mm SCALE: NTS GENERAL TOLERANCES (UNLESS SPECIFIED) ANGULAR TOL: ± ° 4 PLACES ± 3 PLACES ± 2 PLACES ± 1 PLACE ± 0 PLACES ±	CURRENT REV DESC: EC NO: 643258 DRWN: ARAJU 2020/06/22 CHK'D: RDESAI01 2020/08/12 APPR: RDESAI01 2020/08/12 INITIAL REVISION: DRWN: ARAJU 2020/06/22 APPR: RDESAI01 2020/08/12							
	PRODUCT CUSTOMER DRAWING								
	DRAFT WHERE APPLICABLE MUST REMAIN WITHIN DIMENSIONS		THIRD ANGLE PROJECTION	DRAWING: A4-SIZE	SERIES: 216291	DOCUMENT NUMBER: 2162911041	DOC TYPE: PSD	DOC PART: 000	REVISION: A
	MATERIAL NUMBER: SEE TABLE		CUSTOMER: GENERAL MARKET		SHEET NUMBER: 1 OF 1				