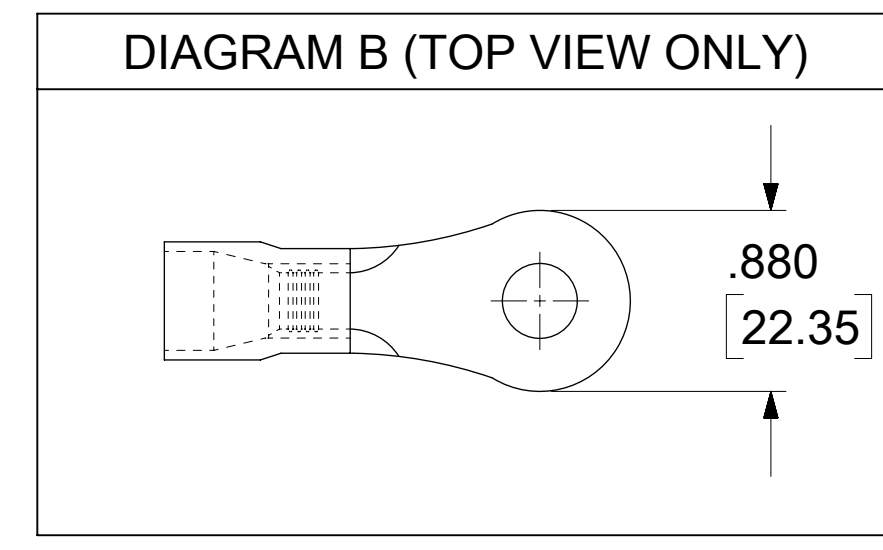
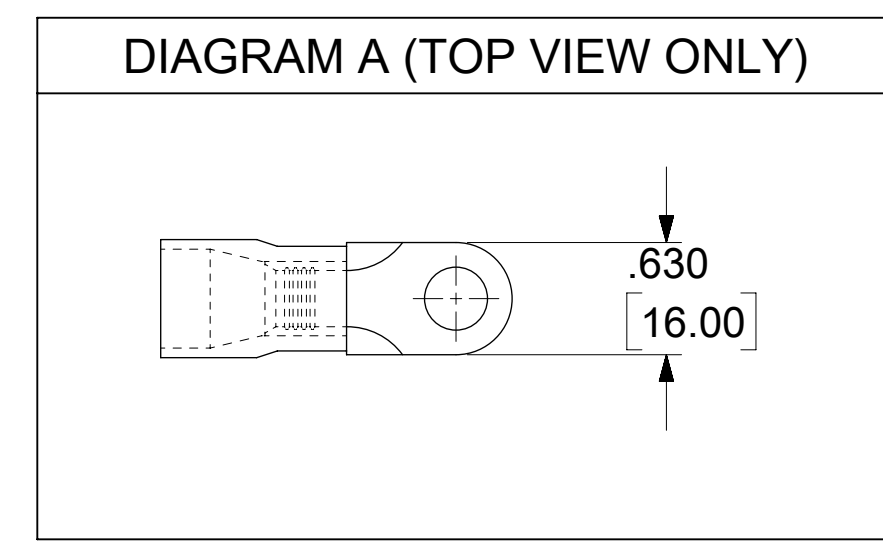
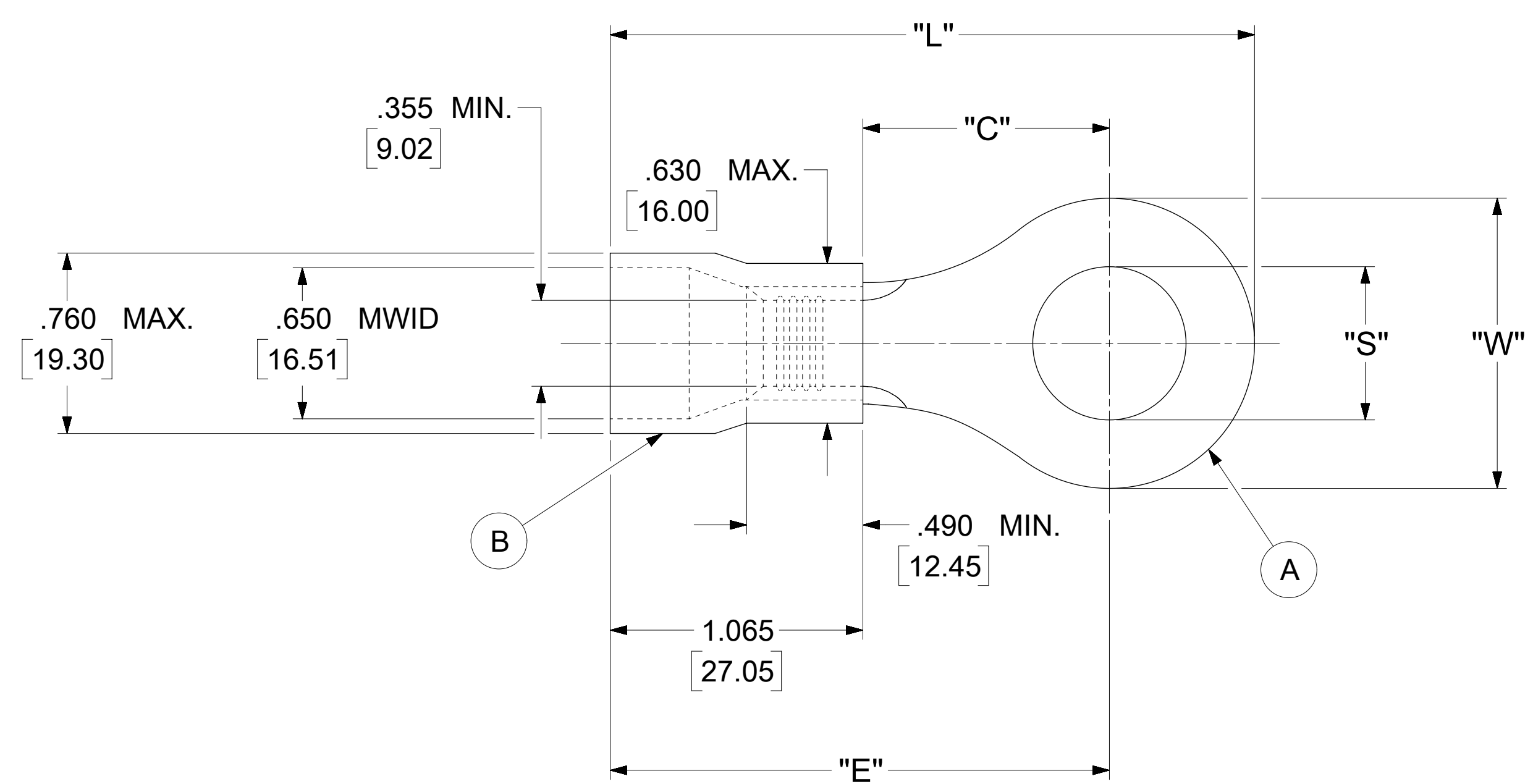


LOOSE PIECE		SPECIFICATIONS						
MATERIAL NUMBER	ENGINEERING NUMBER	STUD SIZE	"S" ±.005 [0.13]	"W" ±.013 [0.33]	"C" MIN.	"E" MAX.	"L" MAX.	DIAGRAM
190710272	G-674-12X	12	.515 [13.08]	.880 [22.35]	.693 [17.60]	1.803 [45.80]	2.234 [56.74]	B
190710273	G-674-14X	14	.265 [6.73]					
190710279	G-675-10X	10	.198 [5.03]	.630 [16.00]	.693 [17.60]	1.803 [45.80]	2.110 [53.59]	A
190710281	G-675-14X	14	.265 [6.73]					
190710283	G-675-38X	38	.390 [9.91]					
190710285	G-675-56X	56	.328 [8.33]					
190710289	G-676-12X	12	.515 [13.08]	.880 [22.35]	.990 [25.15]	2.090 [53.09]	2.527 [64.19]	B



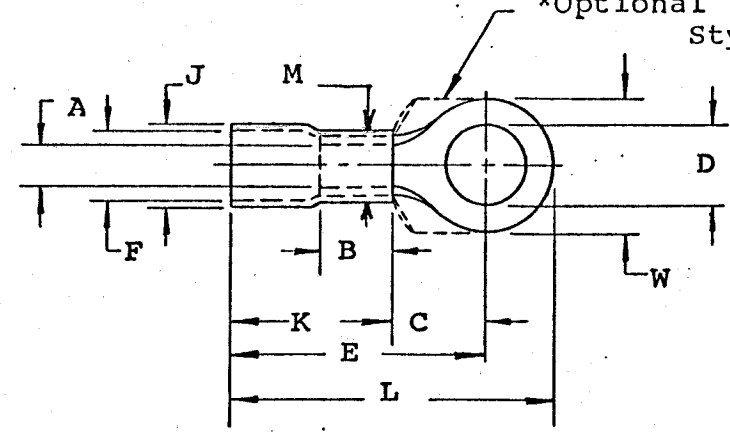
- NOTES:
- MATERIAL:
 - (A). TERMINAL: COPPER (STOCK TKN .075[1.90])
PLATING: ELECTRO-TIN (.0003 MIN.)
 - (B). INSULATION: MOLDED PVC (RED)
 - MWID: MAXIMUM WIRE INSULATION DIAMETER
 - WIRE SIZE: 2 AWG
35 MM²
 - "UL" LISTING #E32244
"CSA" LISTING #18689
 - ALL DIMENSIONS IN INCHES/[MM].
 - PARTS ARE ROHS COMPLIANT.
 - DIMS. SHOWN ARE FOR REFERENCE ONLY.

SYMBOLS	THIS DRAWING CONTAINS INFORMATION THAT IS PROPRIETARY TO MOLEX ELECTRONIC TECHNOLOGIES, LLC AND SHOULD NOT BE USED WITHOUT WRITTEN PERMISSION																										
	DIMENSION UNITS		SCALE		CURRENT REV DESC: MIGRATION TO ECTR/NX																						
	INCH/MM		NTS		EC NO: 620820 DRWN: ABENJAMINLW 2019/07/10 CHK'D: GROJAS01 2019/07/17 APPR: JMACNEIL 2019/08/06 INITIAL REVISION: DRWN: JTK 1970/01/21 APPR: JMACNEIL 2019/08/06																						
GENERAL TOLERANCES (UNLESS SPECIFIED)					DOCUMENT NUMBER 190710272																						
<table border="1"> <tr> <th></th> <th>MM</th> <th>INCH</th> </tr> <tr> <td>4 PLACES ±</td> <td>---</td> <td>---</td> </tr> <tr> <td>3 PLACES ±</td> <td>---</td> <td>.005</td> </tr> <tr> <td>2 PLACES ±</td> <td>0.13</td> <td>.01</td> </tr> <tr> <td>1 PLACE ±</td> <td>0.25</td> <td>---</td> </tr> <tr> <td>0 PLACES ±</td> <td>---</td> <td>---</td> </tr> </table>						MM	INCH	4 PLACES ±	---	---	3 PLACES ±	---	.005	2 PLACES ±	0.13	.01	1 PLACE ±	0.25	---	0 PLACES ±	---	---	DOC TYPE PSD				
	MM	INCH																									
4 PLACES ±	---	---																									
3 PLACES ±	---	.005																									
2 PLACES ±	0.13	.01																									
1 PLACE ±	0.25	---																									
0 PLACES ±	---	---																									
ANGULAR TOL ± 0.5°					DOC PART 000																						
DRAFT WHERE APPLICABLE MUST REMAIN WITHIN DIMENSIONS					REVISION A																						
THIRD ANGLE PROJECTION			DRAWING		SERIES		MATERIAL NUMBER			CUSTOMER																	
			D-SIZE		19071		SEE TABLE			GENERAL MARKET																	
								SHEET NUMBER			1 OF 1																

MATERIAL: Copper
 PLATING: Electro-Tin (.0003 Min.)
 INSULATION: PVC COLOR CODED RED
 STUD SIZES: ("D" ±.005)

INSULKRIMP X

*Optional Style



"M" = .630" Maximum

- 10 - .198
- 14 - .265
- 56 - .328
- 38 - .390
- 76 - .453
- 12 - .515
- 58 - .656
- 34 - .781

Part Number	"W"	"C" Min.	"E" Max.	"K" Max.	"L" Max.	"A" Min. Avg.	"F" (MWID)	Stock Thickness	"J" Max.	"B" Min.	Available Stud Size
G-674-X	.893 .867	.693	1.803	1.065	2.234	.355	.650	.075	.760	.490	14, 56, 38, 76 12, 58
G-675-X	.643 .617	.693	1.803	1.065	2.110	.355	.650	.075	.760	.490	10, 14, 56, 38 76
G-676-X	.893 .867	.990	2.090	1.065	2.527	.355	.650	.075	.760	.490	14, 56, 38, 76 12, 58
G-677-X	1.268 1.242	.990	2.090	1.065	2.685	.355	.650	.075	.760	.490	14, 56, 38, 76 12, 58, 34

NOTE: (MWID) denotes maximum wire insulation diameter.



TITLE: CUSTOMER DRAWING
 #2 WIRE SIZE (G)
 RING TONGUE TERMINAL

DIMENSIONAL TOLERANCE UNLESS OTHERWISE SPECIFIED		
FRAC.	DEC.	ANG.
±	±	±

REVISION	SCALE: _____	DATE
	DRWN. BY: JTK	1-21-70
	CHKD. BY:	
	APPRD. BY:	
	DRAWING NO.:	