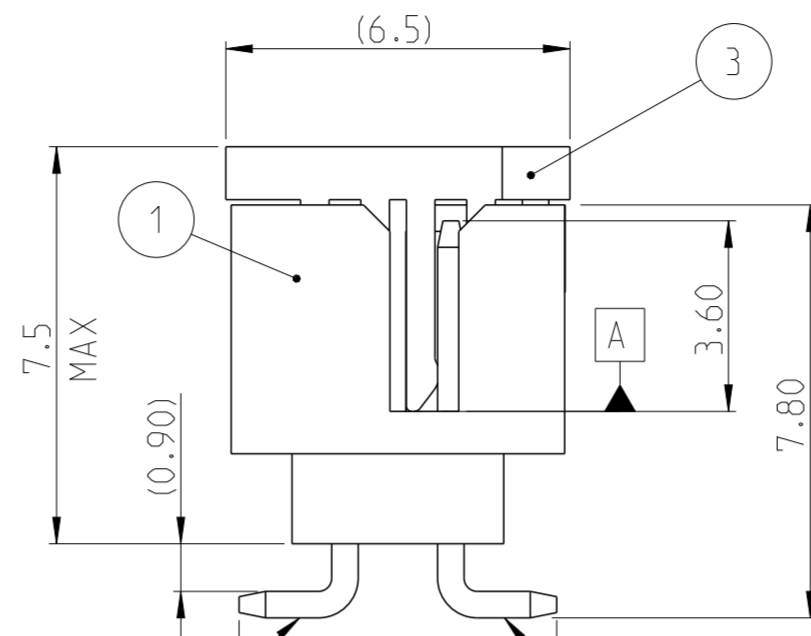
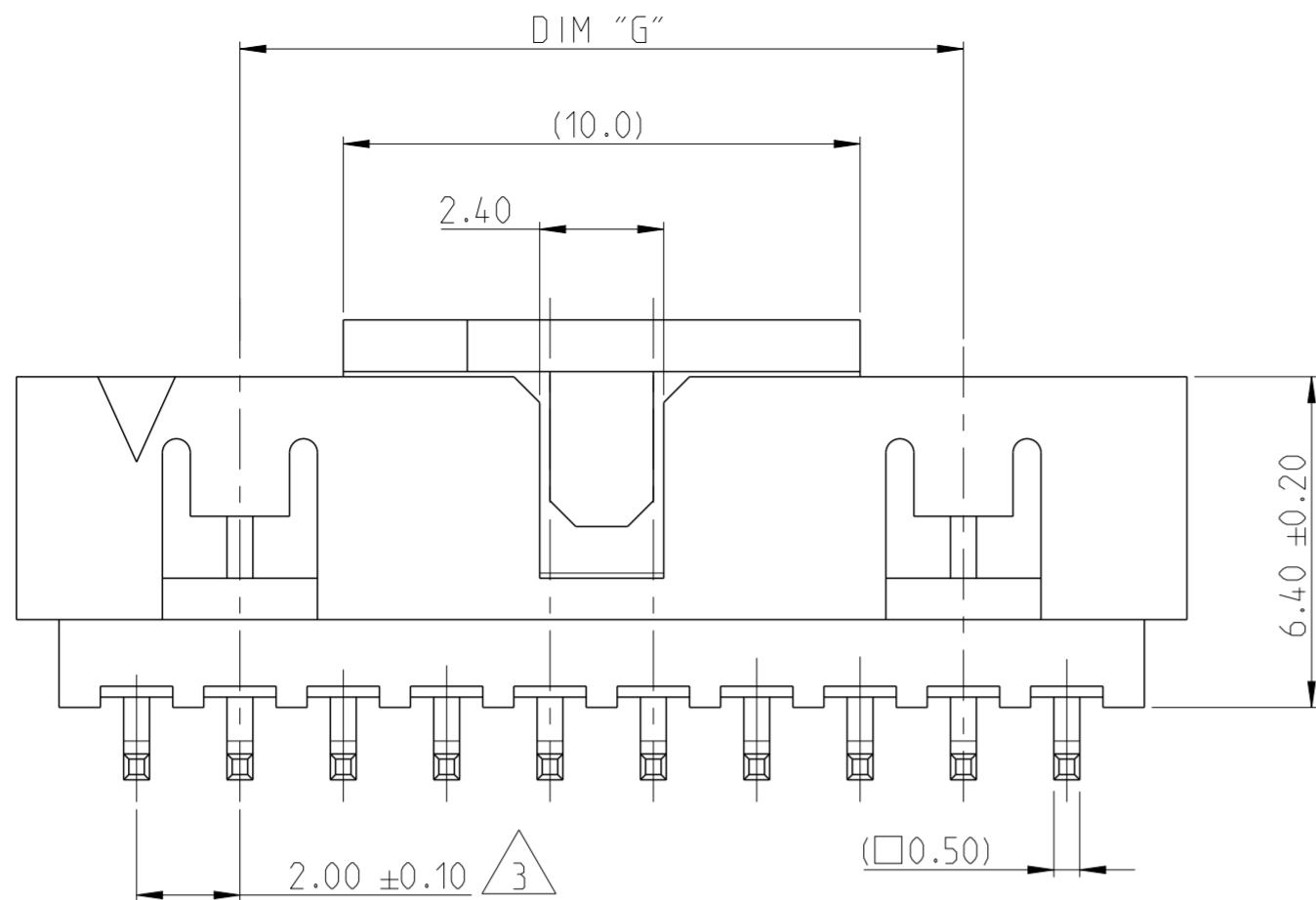


P	LTR	DESCRIPTION	DATE	DWN	APVD
A		RELEASE TO PRODUCTION	09DEC2019	AY	PS
A1		DIMENSION F REMOVED FROM PCB LAYOUT	11JUN2020	AY	PS

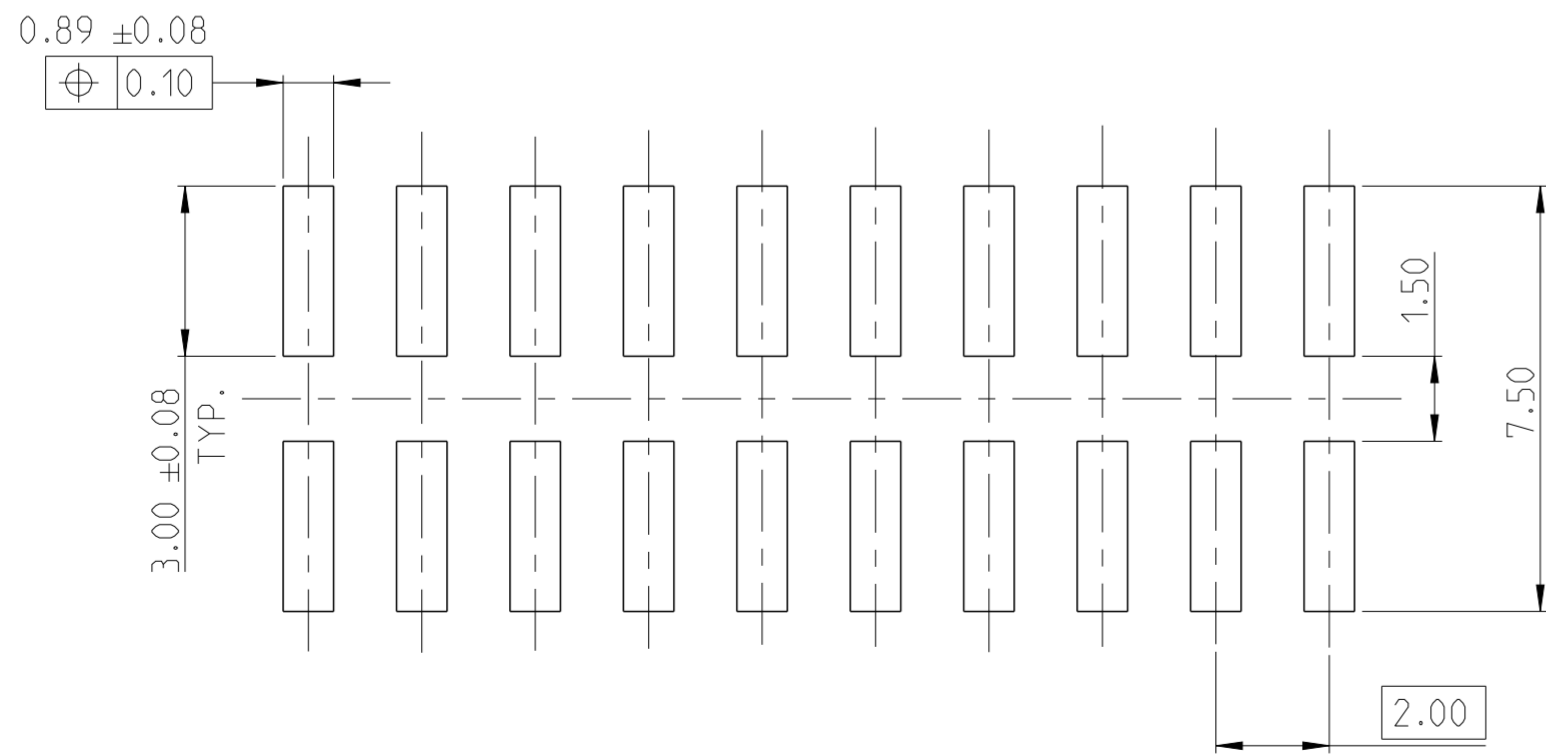
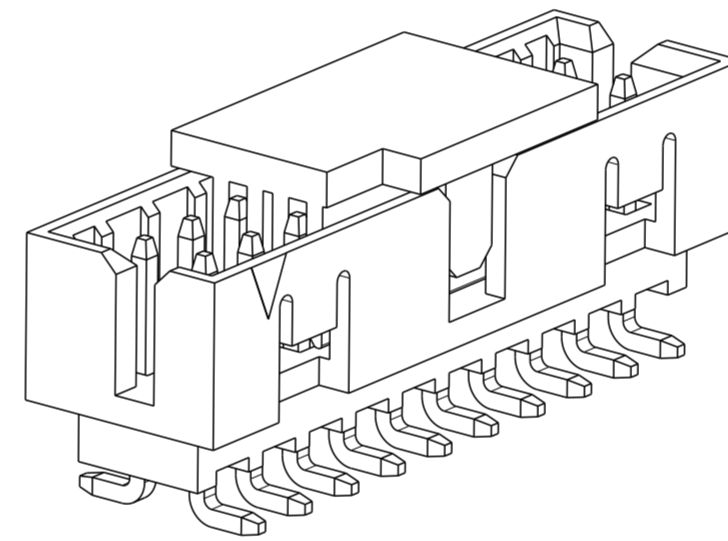
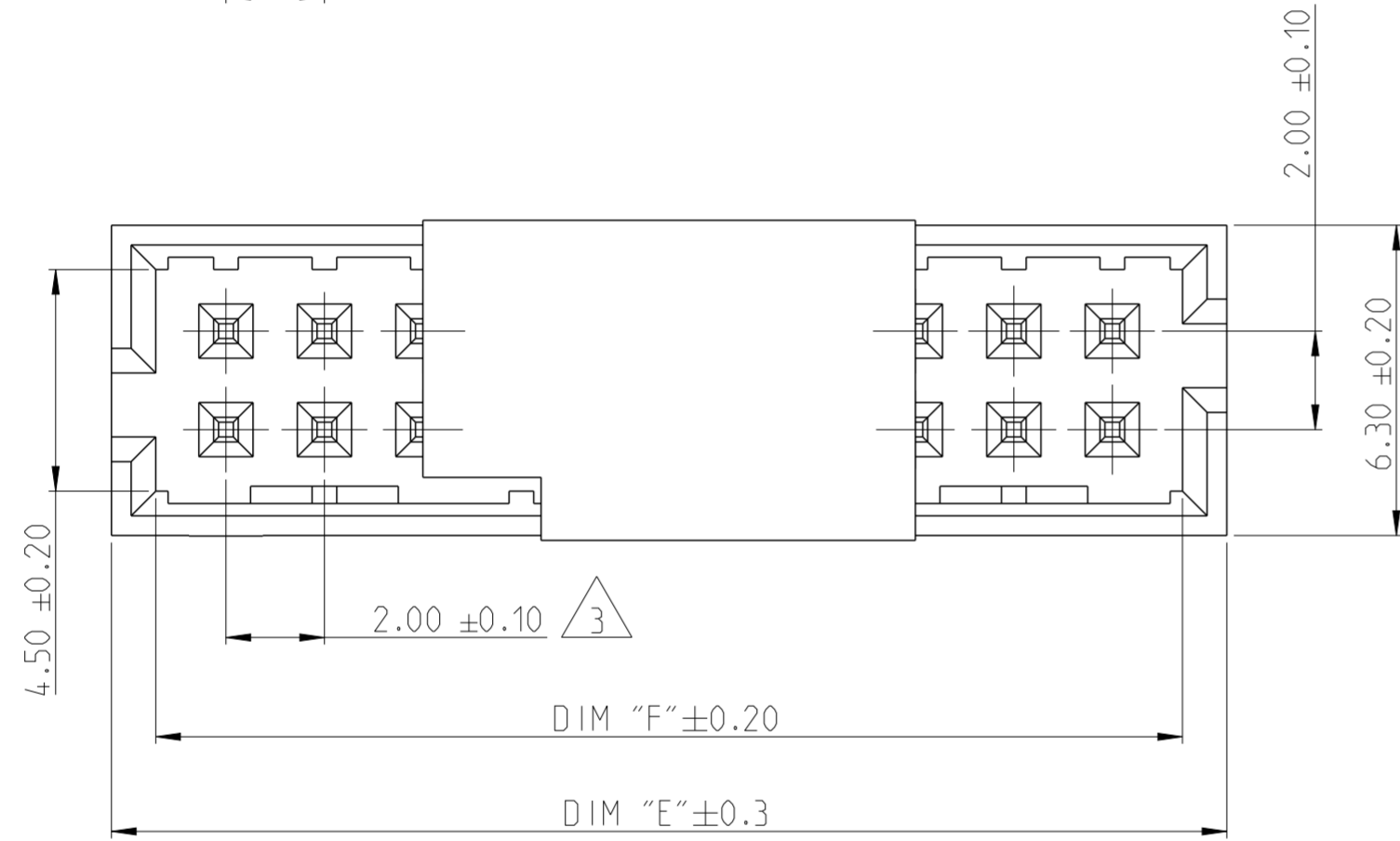


NOTES:

- MATERIAL
HOUSING & P&P CAP : HIGH TEMPERATURE THERMOPLASTIC, UL94-V0; COLOR- BLACK
CONTACT PIN : COPPER ALLOY
FINISH :
MATING SIDE: MIN. 0.1 µm GOLD OVER NICKEL UNDER PLATING.
SOLDER SIDE: MIN. 2.0 µm TIN OVER NICKEL UNDER PLATING.
 - PACKAGING: TUBE (WITH PICK AND PLACE CAP)
- △ TOLERANCE NOT CUMULATIVE.

0.10	A	14-26 POS
0.15	A	30-50 POS

ALL CONTACTS



2-2842244-0 AS SHOWN

44	50.85	52.65	50	5-2842244-0
38	44.85	46.65	44	4-2842244-4
34	40.85	42.65	40	4-2842244-0
28	34.85	36.65	34	3-2842244-4
24	30.85	32.65	30	3-2842244-0
20	26.85	28.65	26	2-2842244-6
18	24.85	26.65	24	2-2842244-4
14	20.85	22.65	20	2-2842244-0
10	16.85	18.65	16	1-2842244-6
8	14.85	16.65	14	1-2842244-4
DIM "G" DIM "F" DIM "E"			POS.	TE PN.

THIS DRAWING IS A CONTROLLED DOCUMENT.

DWN	12NOV2019
CHK	25NOV2019
APVD	27NOV2019

STE TE Connectivity

NAME: AMPMODU 2mm, SHROUDED HEADER, DUAL ROW, VERTICAL SMD, 0.1 Au, TUBE WITH PICK AND PLACE CAP

SIZE: A2 CAGE CODE: 00779 DRAWING NO: C-2842244 RESTRICTED TO: -

SCALE: 5:1 SHEET: 1 OF 1 REV: A1

PICK AND PLACE CAP	3
CONTACT PIN	2
HOUSING	1
DESCRIPTION	ITEM NO.

DIMENSIONS:	TOLERANCES UNLESS OTHERWISE SPECIFIED:
mm	0 PLC ±
	1 PLC ±
	2 PLC ±0.25
	3 PLC ±
	4 PLC ±
	ANGLES ±2°
MATERIAL	FINISH
SEE NOTES	-
-	-