

REVISION HISTORY		
01/27/10	1	INITIAL RELEASE
5/3/10	1.1	MOVE SPEAKER OUTPUT, ADD CAP, REWORK SUPERCAP
5/18/10	2	INCORPORATE REWORK INTO ARTWORK AND CHANGE ACCELEROMETERS, CHANGE PWR LED TO STATUS, DNL D5, ENLARGE MTG HOLDS, RECONFIGURE AND MOVE SPKR OUTPUT
04/01/11	3	MODIFICATIONS TO SUPPORT LPC1788 & TO MORE CLOSELY MATCH THE UEZGUI7
03/08/2012	4	SPLIT RESET_OUT, ADD PCT & PWR/COMM, CHANGE BL DEFAULT TO DISABLED

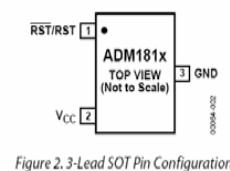
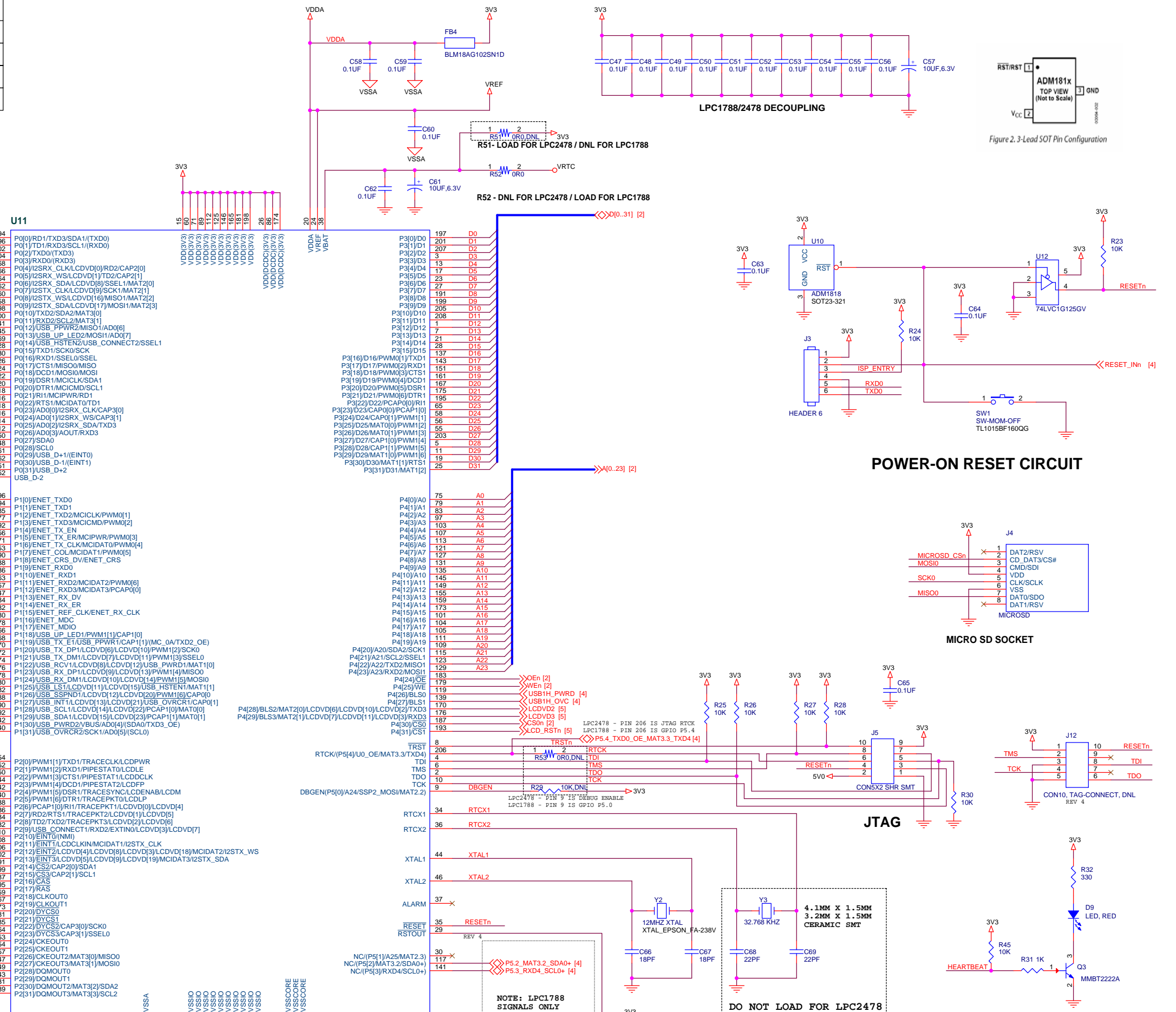
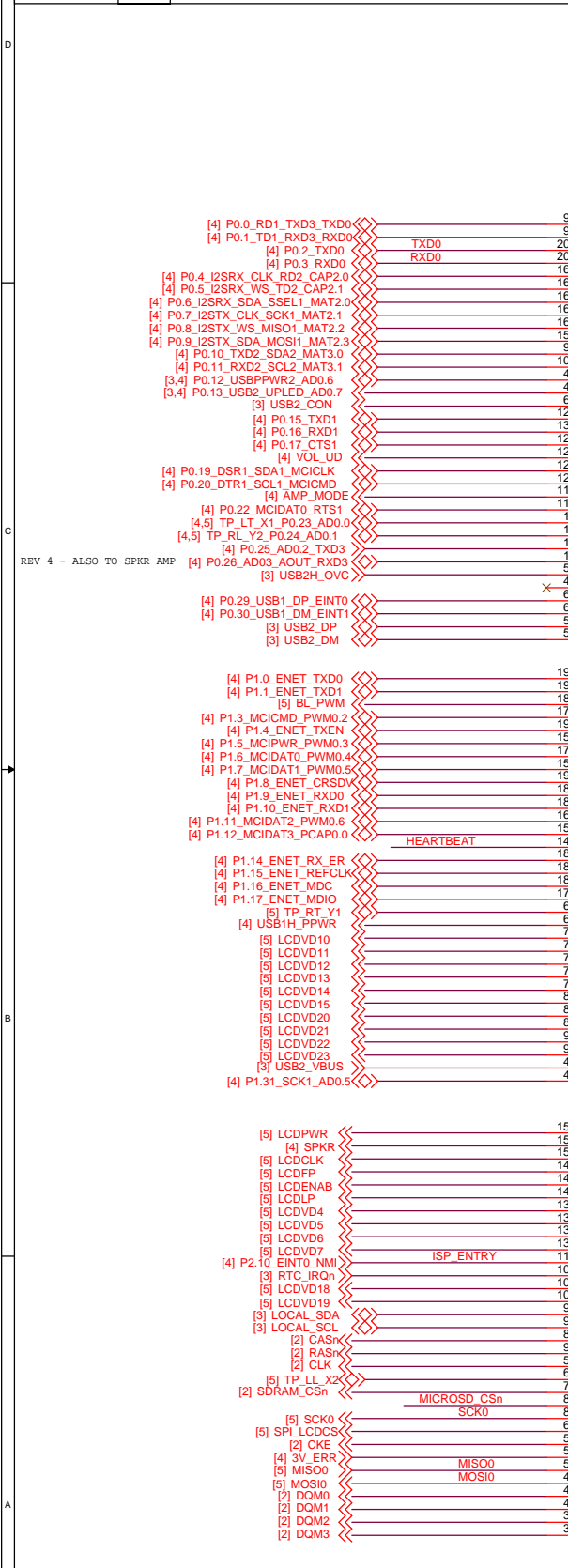
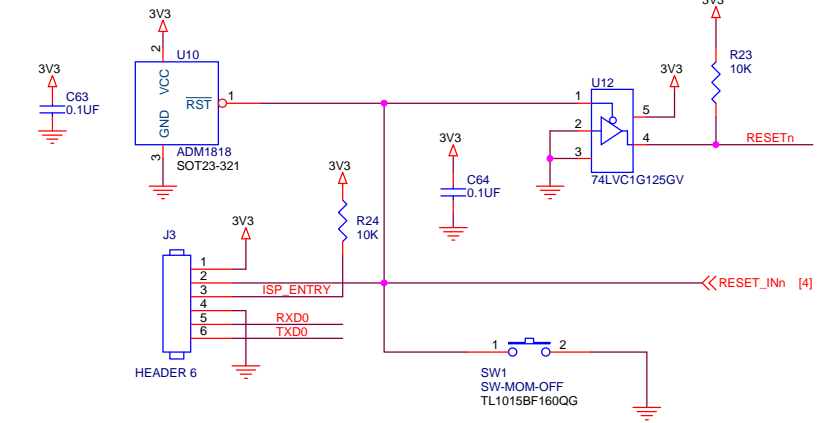
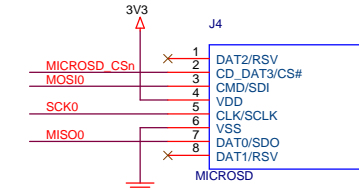


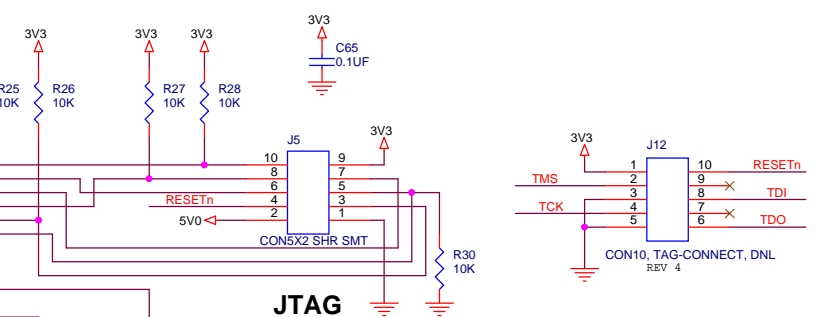
Figure 2. 3-Lead SOT Pin Configuration



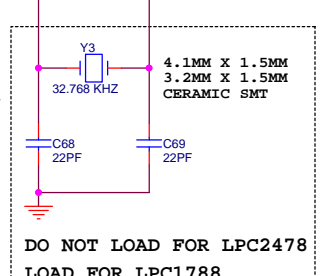
POWER-ON RESET CIRCUIT



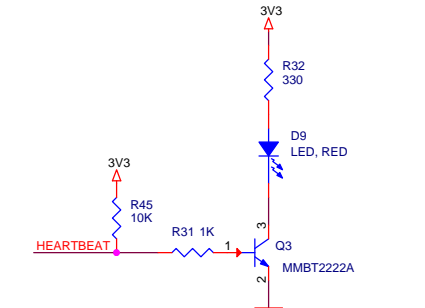
MICRO SD SOCKET



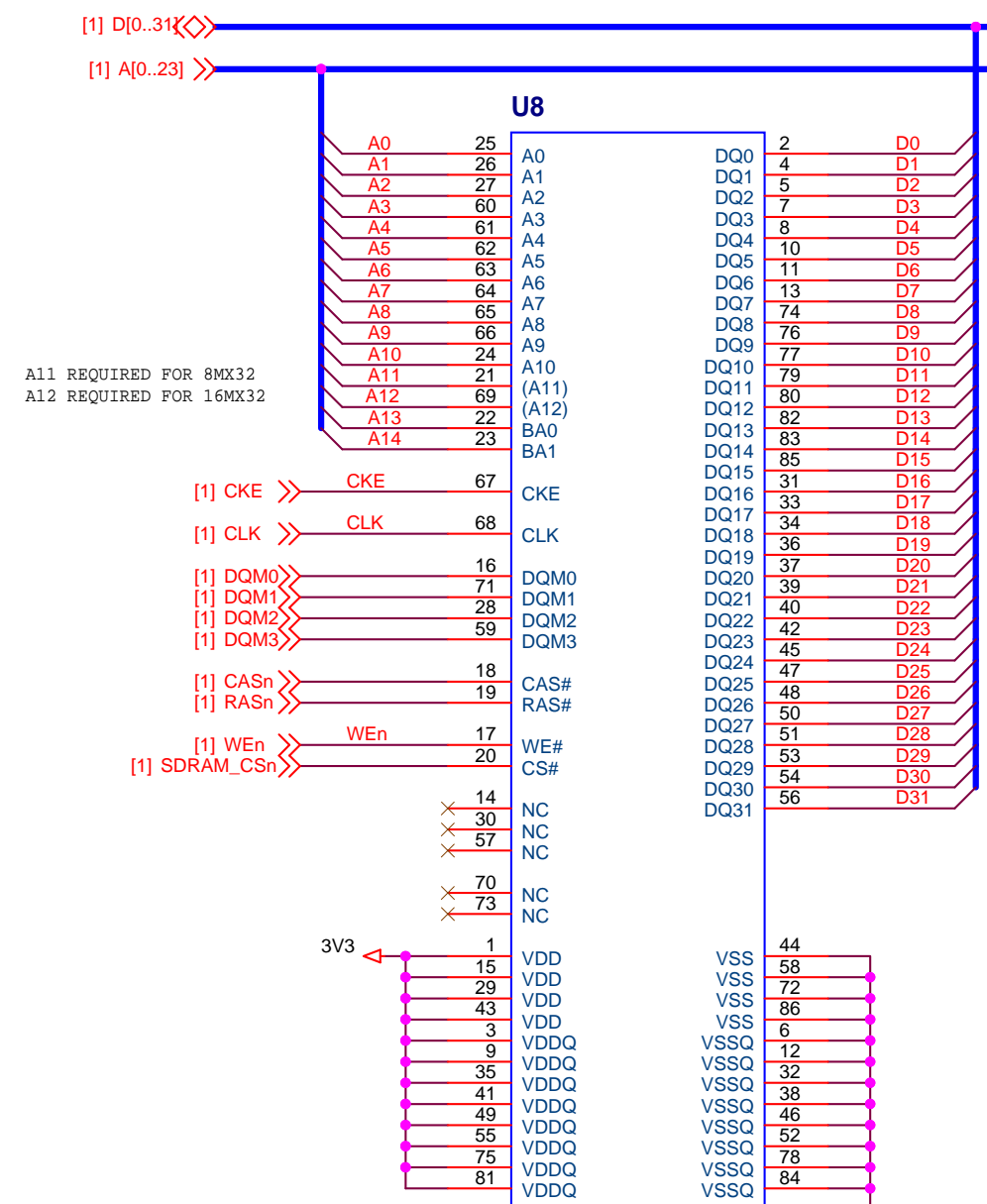
JTAG



DO NOT LOAD FOR LPC2478
LOAD FOR LPC1788

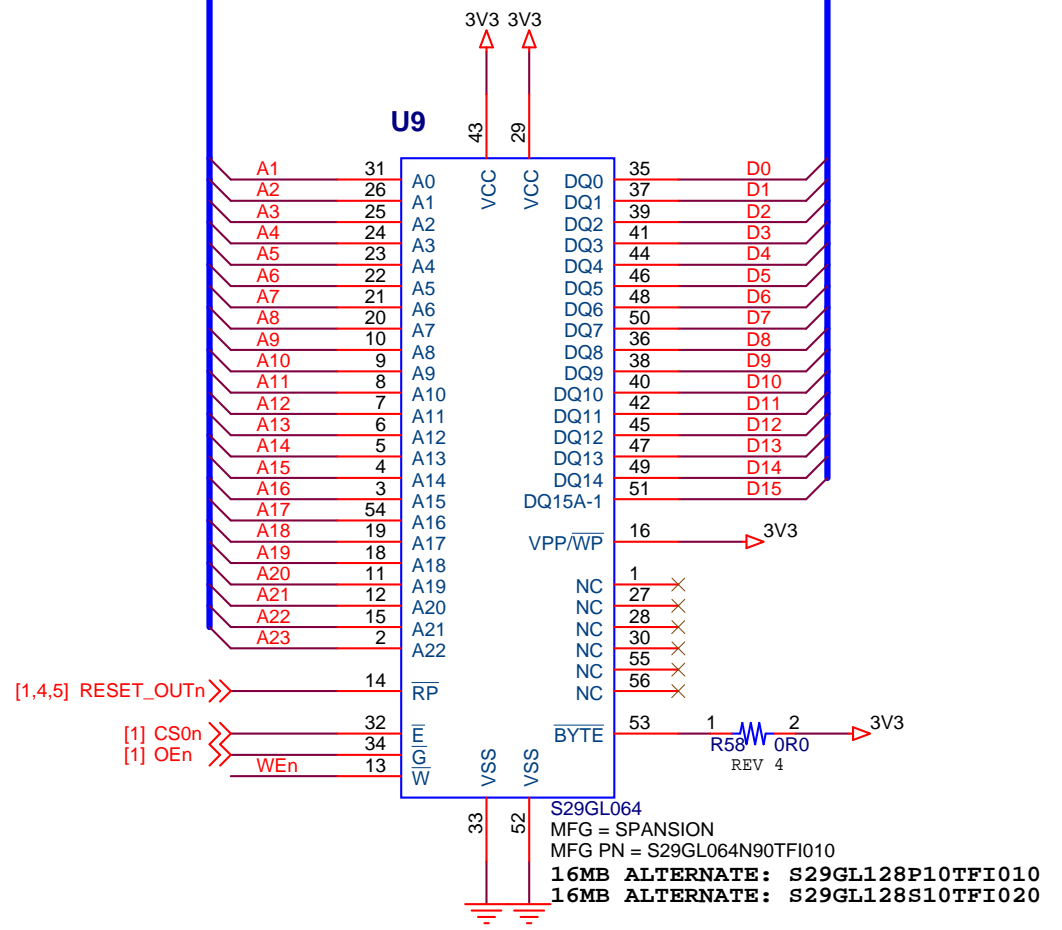
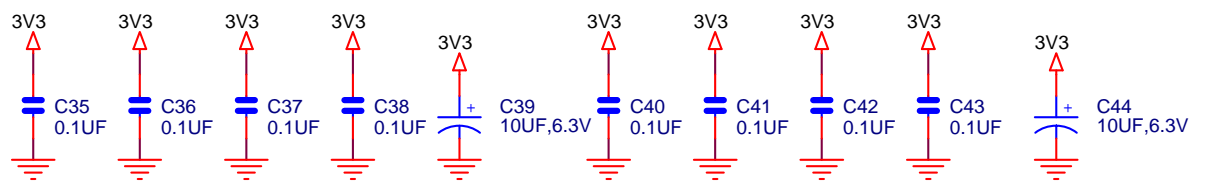


FUTURE DESIGNS, INC. 2702 TRIANA BLVD HUNTSVILLE, AL 35805		FDI
Title	UEZ GUI 4.3*	
Size	Document Number	Rev
C	<Doc>	2
Date:	Thursday, March 08, 2012	Sheet 1 of 5

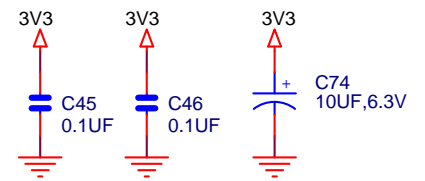


MT48LC2M32B2P
 MT48LC4M32B2P ALTERNATE (16MB)
 IS42S32800D-7TL ALTERNATE (32MB)

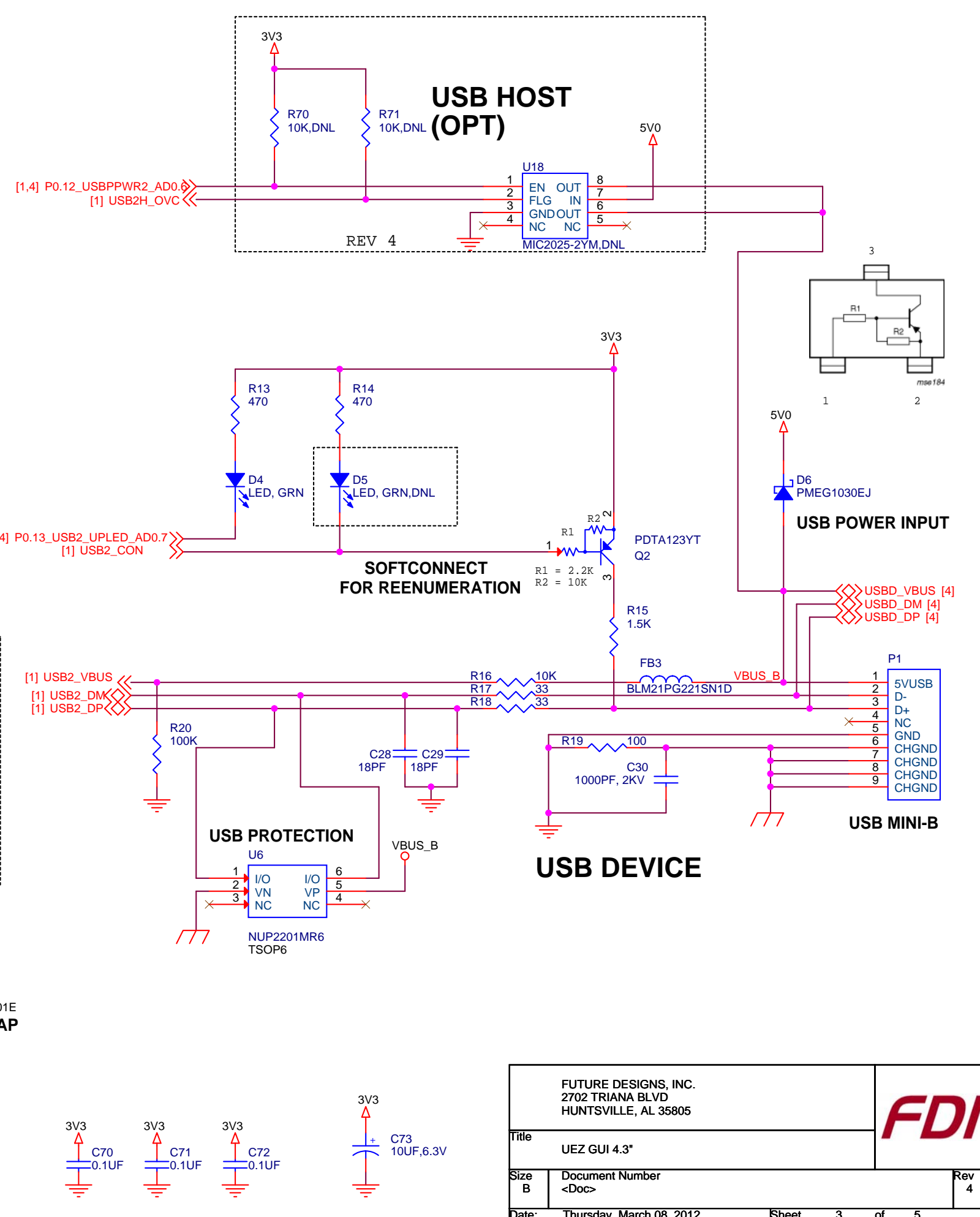
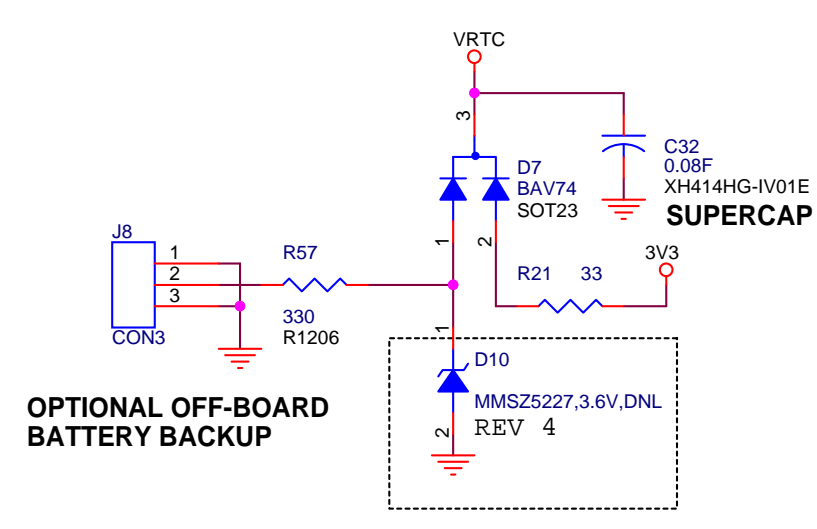
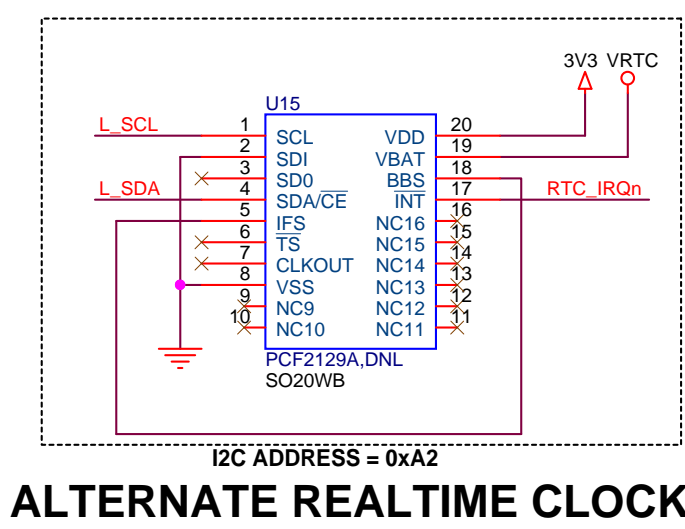
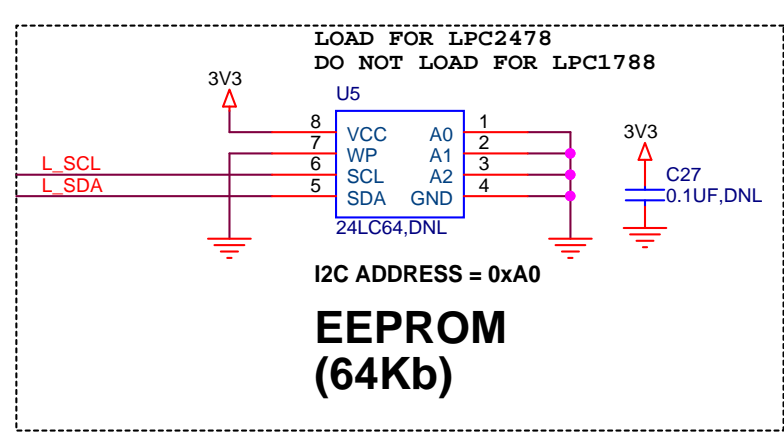
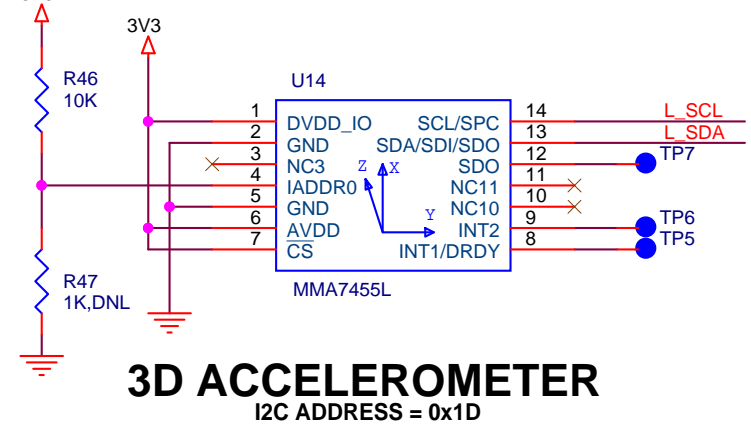
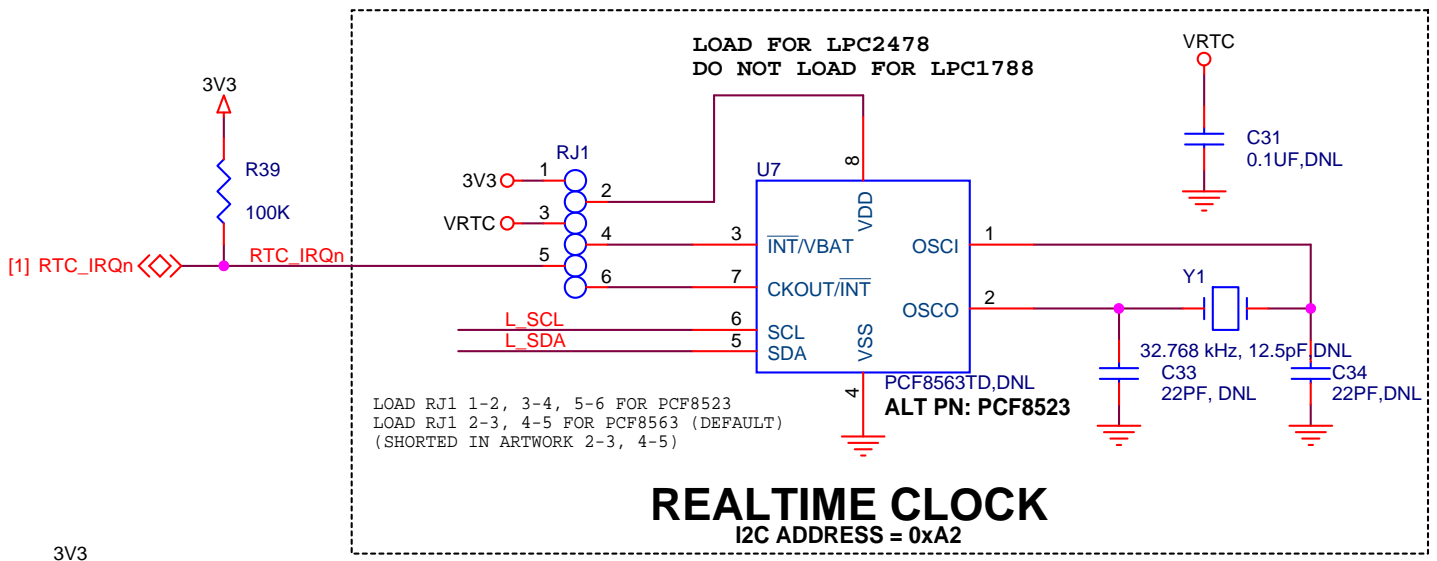
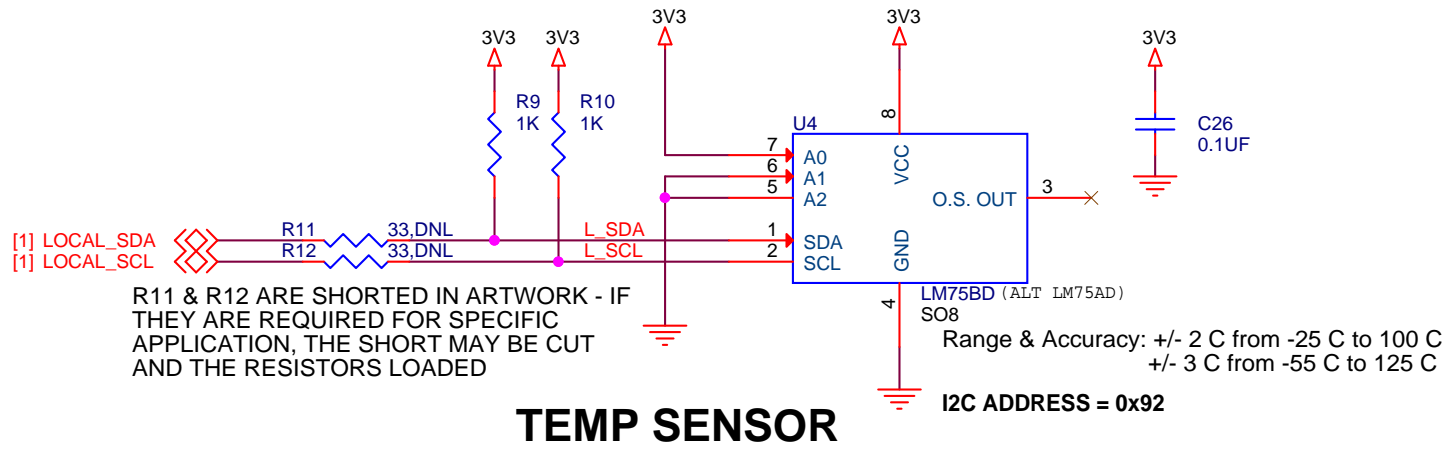
SDRAM (8MB TO 32MB)



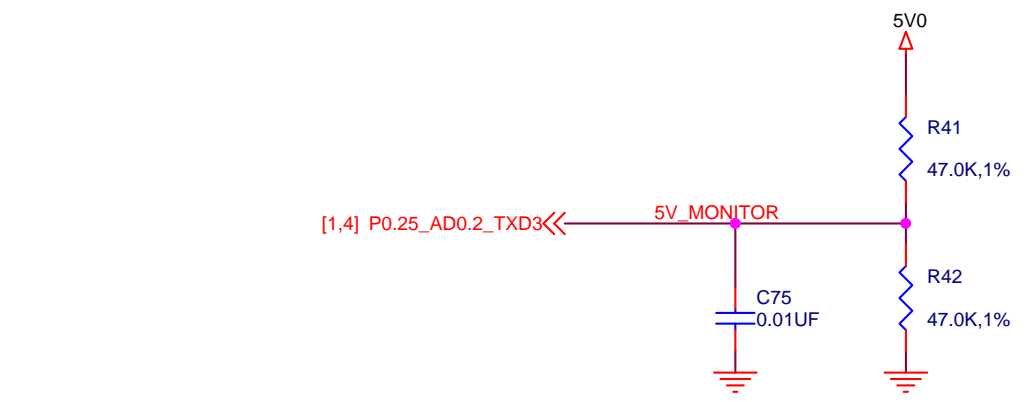
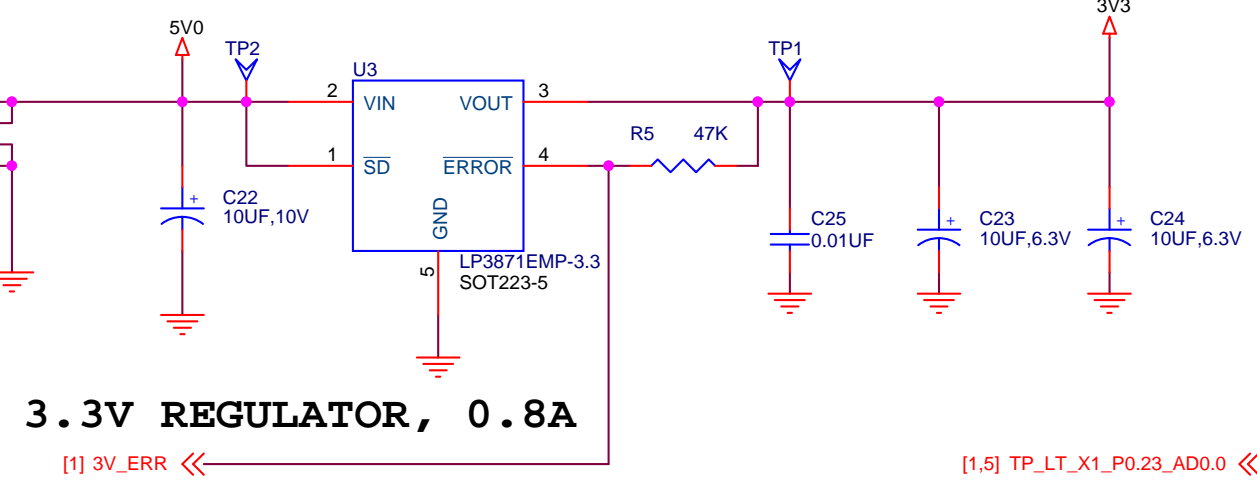
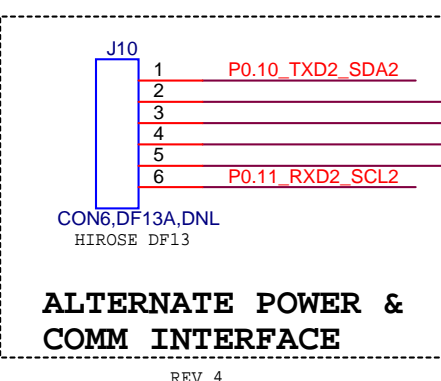
NOR FLASH (8MB TO 16MB)



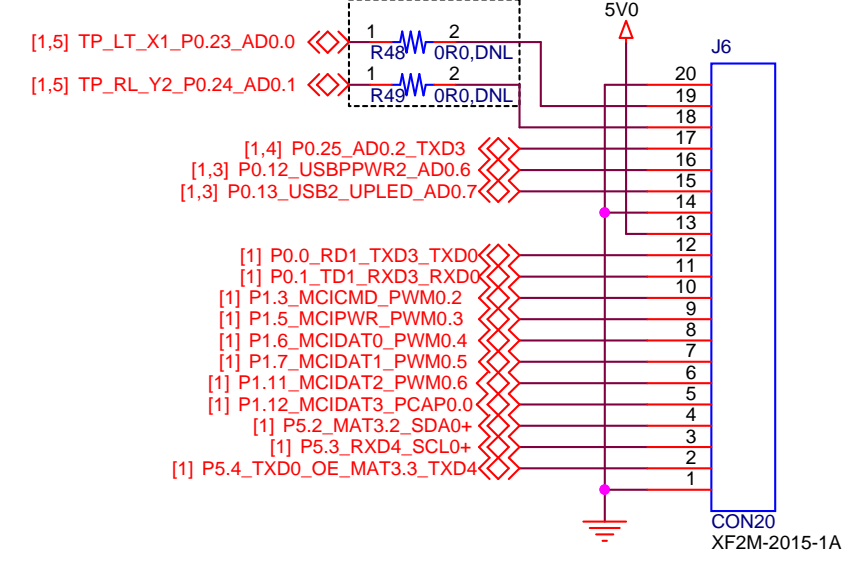
FUTURE DESIGNS, INC. 2702 TRIANA BLVD HUNTSVILLE, AL 35805		FDI
Title UEZ GUI 4.3"		
Size B	Document Number	Rev 3
Date: Thursday, March 08, 2012	Sheet 2	of 5



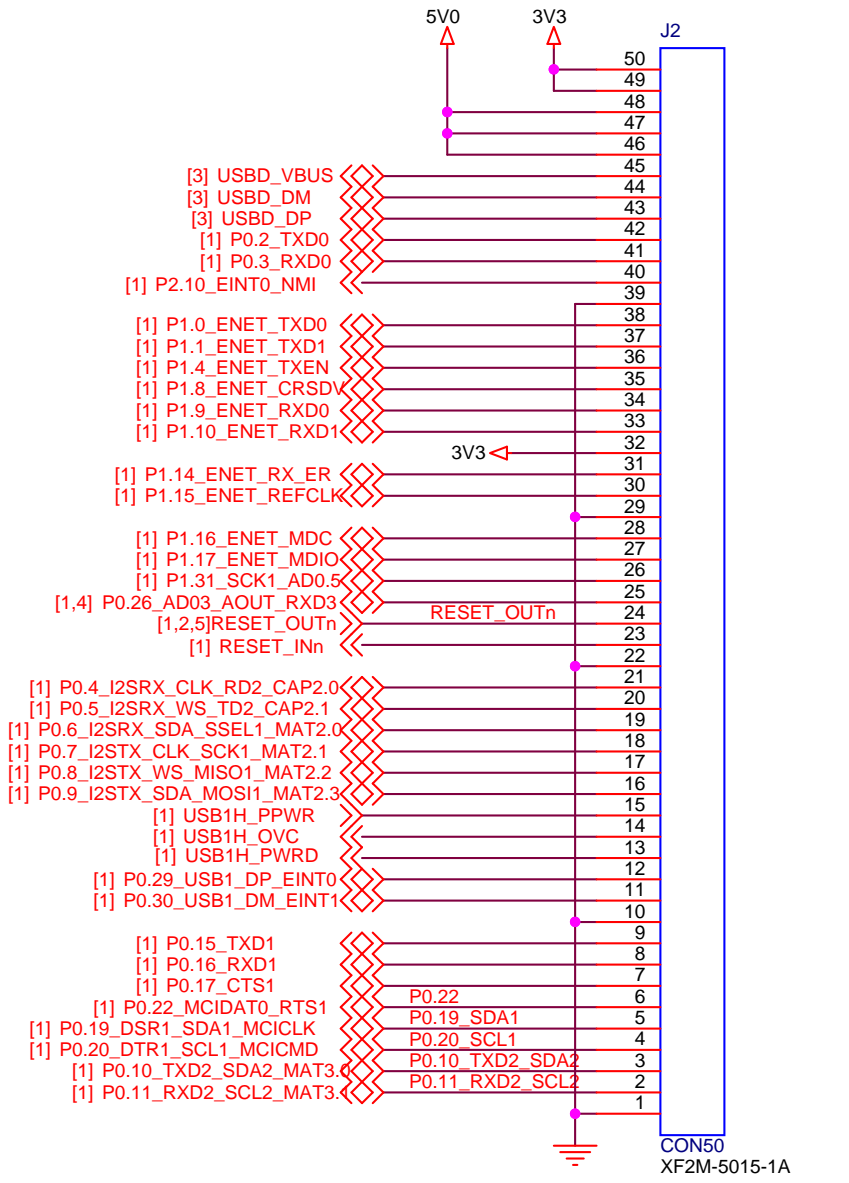
FUTURE DESIGNS, INC. 2702 TRIANA BLVD HUNTSVILLE, AL 35805		FDI
Title	UEZ GUI 4.3"	
Size	Document Number	Rev
B	<Doc>	4
Date:	Thursday, March 08, 2012	Sheet 3 of 5



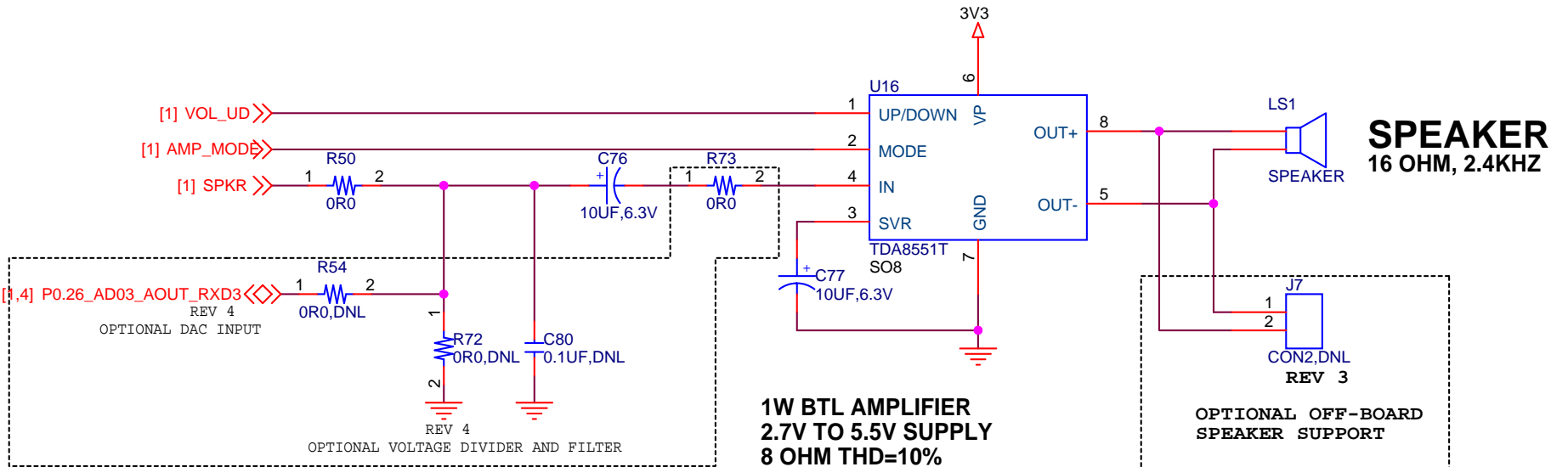
5V INPUT MONITOR VIA ADC



SECONDARY EXPANSION CONNECTOR

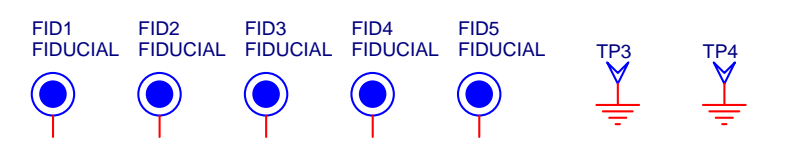


EXPANSION CONNECTOR

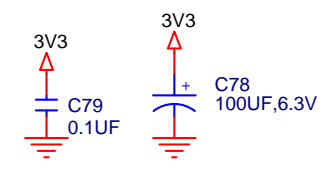


1W BTL AMPLIFIER
 2.7V TO 5.5V SUPPLY
 8 OHM THD=10%
 -60db TO +20db GAIN
 20KOHM INPUT IMPEDANCE
 2Vrms MAX INPUT VOLTAGE

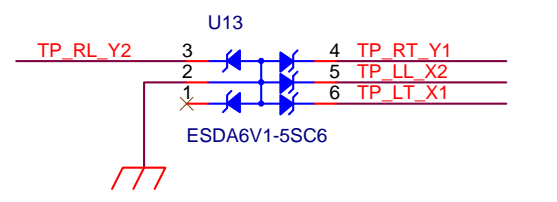
OPTIONAL OFF-BOARD SPEAKER SUPPORT



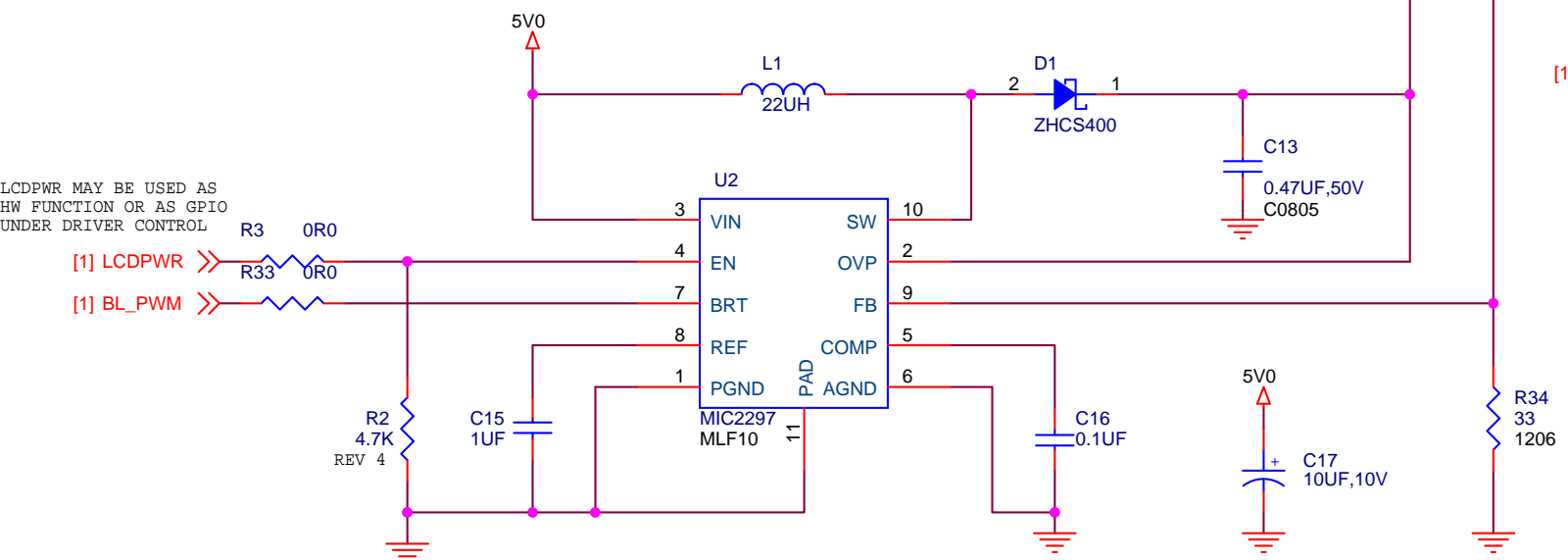
FUTURE DESIGNS, INC. 2702 TRIANA BLVD HUNTSVILLE, AL 35805		FDI
Title UEZ GUI 4.3"		
Size B	Document Number <Doc>	Rev 3
Date: Thursday, March 08, 2012	Sheet 4	of 5



SHARP LCD



TP ESD PROTECTION



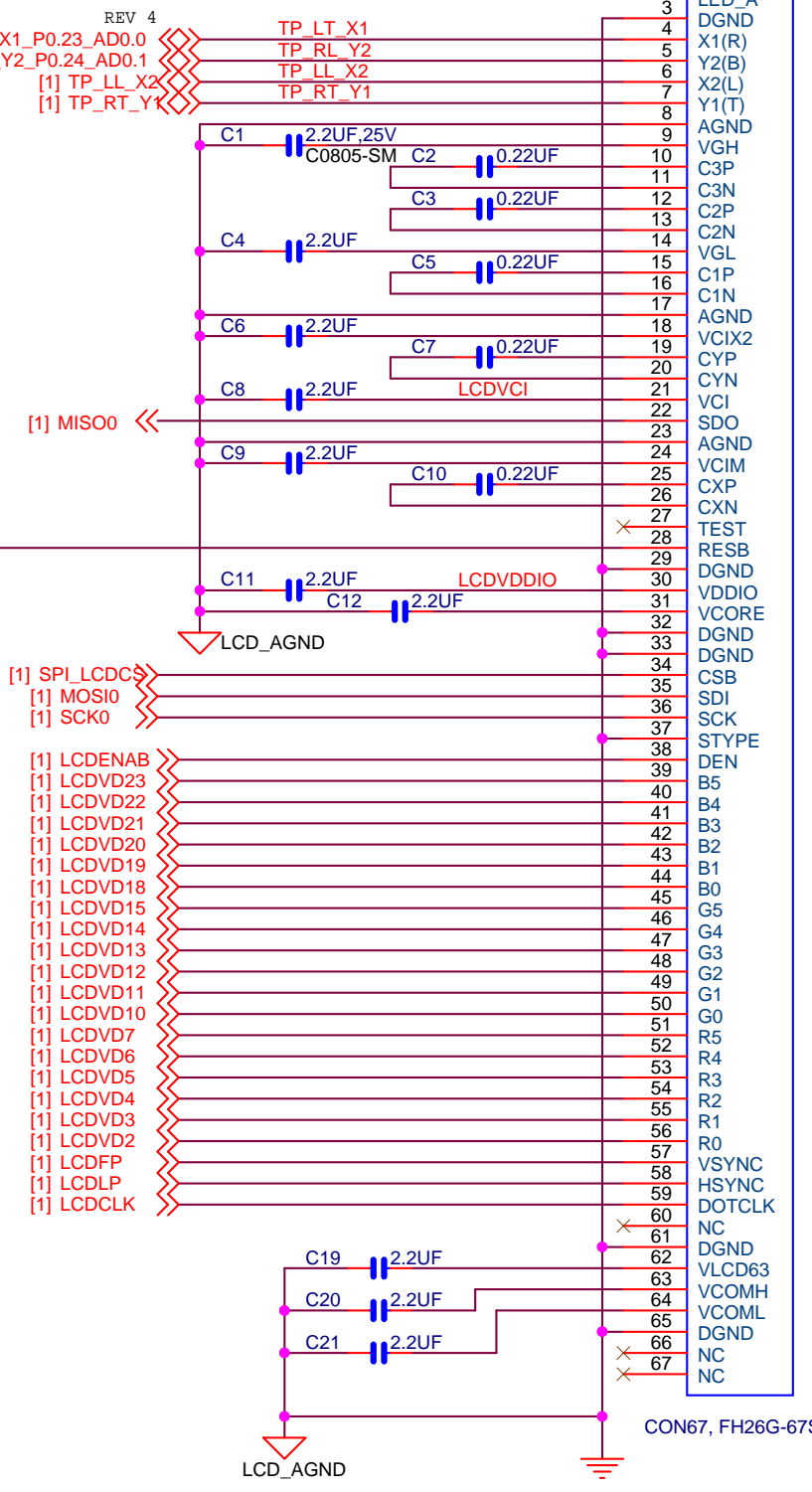
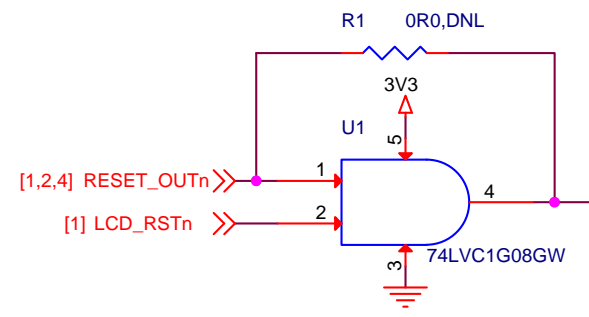
BACKLIGHT VOLTAGE GENERATOR

BACKLIGHT CURRENT CALCULATION:

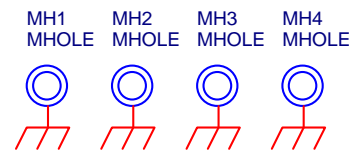
$$I_{LED} = \frac{V_{peak} \cdot D}{5 \cdot R_{sense}}$$

I_{LED} = 20mA FOR THE FOLLOWING;
 R_{SENSE} (R34) = 330HM
 V_{PEAK} (BRT PIN) = 3.3V
 D (BRT PIN) = 0% TO 100%

SUPPORT FOR CPU RESET CONTROL OF LCD MODULE LOAD U1 AND DNL R1



NOTE: SHIELD LCD_AGND AND CONNECT TO GND AT A SINGLE POINT



FUTURE DESIGNS, INC. 2702 TRIANA BLVD HUNTSVILLE, AL 35805		FDI
Title UEZ GUI 4.3"		
Size B	Document Number <Doc>	Rev 3
Date: Thursday, March 08, 2012	Sheet 5	of 5