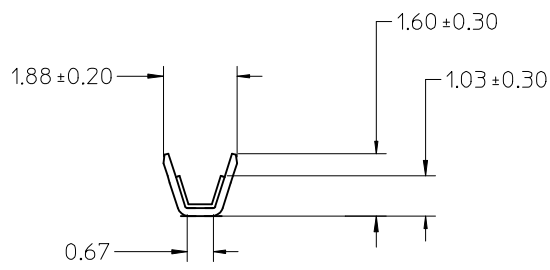
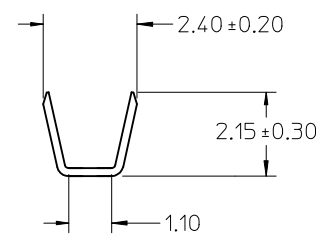


- NOTES:
1. MATERIAL: PHOSPHOR BRONZE ALLOY
 2. PLATING: 2.50μm/100μm TIN OVERALL
OVER 1.25μm/50μm OVERALL NICKEL UNDERPLATING.
 3. PART CONFORMS TO PRODUCT SPECIFICATION PS-45579-001.
 4. TERMINAL FOR USE IN SPOX PLUG 45626.
 5. FOR TERMINAL ORIENTATION SEE DRAWING SD-45626-001.
 6. USE MOLEX EXTRACTION TOOL 63813-1400 TO REMOVE TERMINAL WITHOUT DAMAGE TO THE PLUG CORE. REMOVED TERMINAL IS NOT USABLE.
 7. CONTACT WIPE IN 45626-0001 HOUSING WHEN MATED TO 08-70-1045 TERMINAL IN 45579-0001 HOUSING:
STANDARD WIPE (ALL CIRCUITS EXCEPT CKT 1) 2.28mm +0.23/-0.25
FIRST-MAKE / LAST BREAK (CIRCUIT 1) 3.28mm +0.24/-0.26
TOLERANCE CALCULATED BY ROOT MEAN SQUARE METHOD (RMS)



SECTION A-A
SCALE 8:1



SECTION B-B
SCALE 8:1

EC NO: UCP2005-2128 DRWN: MCARRANZ 05/04/05 CHKD: 2005/04/05 APPR: JCOMERCI 2005/04/08	QUALITY SYMBOLS	GENERAL TOLERANCES (UNLESS SPECIFIED)	SCALE 4:1	DESIGN UNITS METRIC	THIRD ANGLE PROJECTION	REVISE ON CAD ONLY	
	DESCRIPTION ▼ - 0 ∇ = 0	mm	INCH	DIMENSION STYLE MM ONLY		TITLE	
		4 PLACES ± --- ± ---	3 PLACES ± --- ± ---	DRAWN BY KSTILES	DATE 2/26/2004	0.70MM SPOX MALE CRIMP PIN TERMINAL 22-24AWG	
		2 PLACES ± 0.13 ± ---	1 PLACE ± 0.25 ± ---	CHECKED BY MCARRANZ	DATE 05/17/04		
	ANGULAR ± 1/2°	DRAFT WHERE APPLICABLE	APPROVED BY JCOMERCI	DATE 05/18/04	MATERIAL NO. 45627-0002	DOCUMENT NO. SD-45627-002	SHEET NO. 1 OF 1
A1		MUST REMAIN WITHIN DIMENSIONS	THIS DRAWING CONTAINS INFORMATION THAT IS PROPRIETARY TO MOLEX INCORPORATED AND SHOULD NOT BE USED WITHOUT WRITTEN PERMISSION				