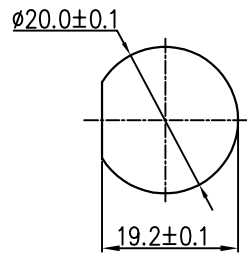
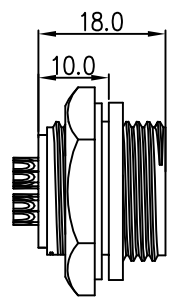


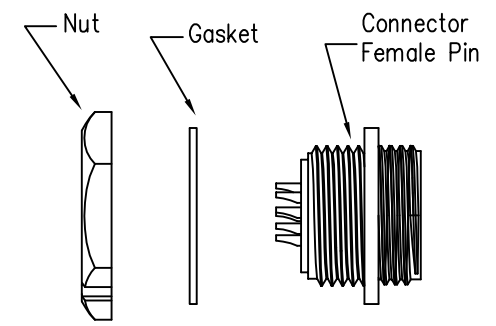
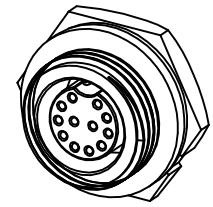
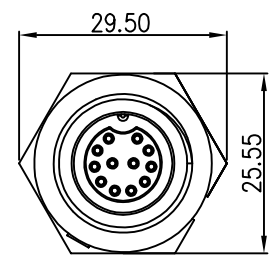
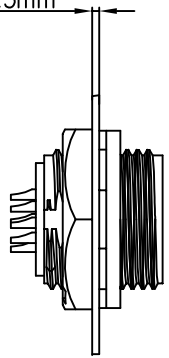
REV.	ECN NO.	DESCRIPTION	SIGN	DATE
C1	N/A	INITIAL DRAWING	Liu	2020/05/16



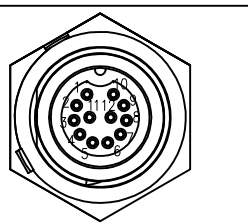
Recommended Panel Cut-Out



Panel T: Max 3.5mm



23XXX615-03  
Pin Number



12 Pin

P/N: 23012615-03

Pin Assignments  
Front View

- Specification:
- 1.Operation Temperature:  $-45^{\circ}\text{C} \sim 105^{\circ}\text{C}$ .
  - 2.Insulation Resistance:  $100\text{M}\Omega$  at DC500V.
  - 3.Contact Resistance:  $<10\text{m}\Omega$ .
  - 4.Withstand Voltage: 1000V AC
  - 5.Operating Current: 2A
  - 6.Operating Voltage: DC 30V
  - 7.Waterproof Rate: IP67 (Mated)
  - 8.Housing: Nylon, Black
  - 9.Female Pin: Copper Alloy, Gold Plated
  - 10.Gasket: Silicon Gray
  - 11.Panel Nut: Nylon, Black
  - 12.Torque Rate:  $0.8 \sim 1.0\text{N} \cdot \text{m}$
  - 13.RoHS Compliant.
  - 14.Mating Cap P/N: 806-00021-00

UNIT:mm		DESCRIPTION Middle Series Screw Type Rear Mount With Female Pin	<b>CHOGORI</b>		PART NO 23012615-03	DRAWN BY Liu	DATE 2020/05/16
TOLERANCE .X ±0.25 .XX ±0.15 .XXX ±0.05 ANGLES ±1°	SCALE 1:1	SHEET 1 OF 1			DWG NO	CHECKED BY Mo	DATE 2020/05/16
REV. C1	SIZE A4	* : Inspection Item			CUSTOMER	APPROVED BY Panson	DATE 2020/05/16

THIS INFORMATION IS CONFIDENTIAL AND IS DISCLOSED TO YOU ON CONDITION THAT NO FURTHER DISCLOSURE IS MADE BY YOU TO OTHER THAN CHOGORI PERSONNEL WITHOUT AUTHORIZATION FROM CHOGORI CORP.