

**SPECIFICATIONS:**

Insulation Resistance: 1,000MΩ min. at 500V DC  
 Withstanding Voltage: 750Vrms for 1min  
 Voltage Rating: 335V DC  
 Current Rating: 1.0A MAX  
 Contact Resistance: 5mΩ max. at 20mV max.  
 Operating Temp.: - 40°C ~ +105°C  
 Mating Cycle: 25 times

**PART NUMBER:**

**HFU106P-5001-0X-VE**

Series Name

Vertical Mount 1pin

Key Codes:

- Key A: White
- Key B: Black
- Key C: Blue
- Key D: Bordeaux Violet
- Key G: Grey
- Key I: Beige
- Key L: Carmine Red
- Key Z: Water Blue

**AUTOMOTIVE COMPLIANT**

**MATERIALS AND FINISH:**

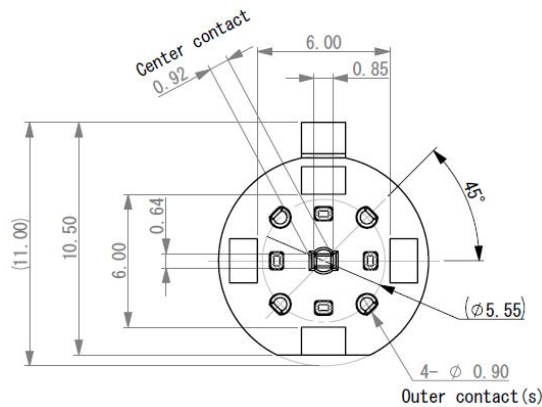
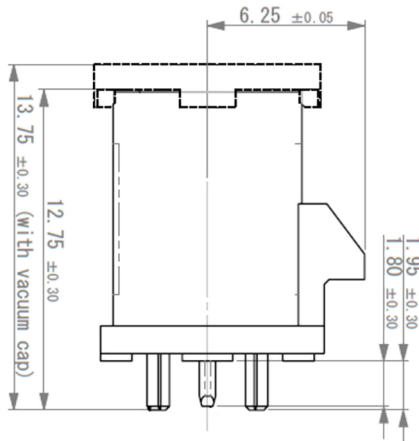
- Insulator: Heat Resistant Plastic
- Contacts:
- Outer Contact: Zinc Alloy
- Center Contact: Brass

**FEATURES:**

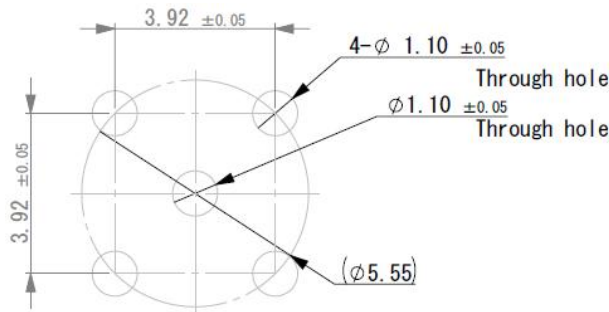
- USCAR-18 Guidelines Compliant
- USCAR-17 Physical Stress Test Compliant
- Vertical TH Mount



**OUTLINE DIMENSIONS:**



**RECOMMENDED PCB LAYOUT:**



Recommended PCB layout

