

PART NO.	ENG. NO.
02-09-2141	1434-(P901)
02-09-2143	1434-(P901)L
02-09-2149	1434-(P901)I
02-09-2186	1434-(P903)
02-09-2185	1434-(P903)L
02-09-6144	1434-(550)
02-09-6145	1434-(550)L

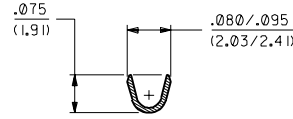
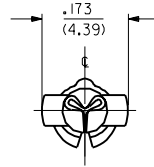
LEGEND

1434-(****)*

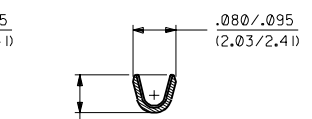
- P = PREPLATE
- BLANK = POSTPLATE
- FORM BLANK = CHAIN
- L = LOOSE
- I = WITH INTERLEAF PAPER
- FINISH CODE (SEE NOTE 2)

NOTES:

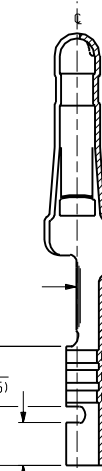
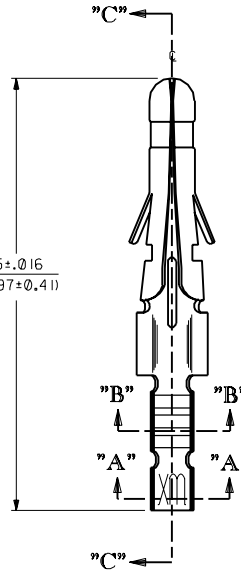
1. MATERIAL: BRASS, ALLOY #26000
2. FINISH:
 - 901 HOT TIN DIP .000020/(0.0005) MIN.
 - 903 HOT TIN-LEAD DIP .000050/(0.00127) MIN.
 - 550 SELECT GOLD PLATE .000015/(0.00038) MIN. IN CONTACT AREA, OVER .000030/(0.00076) MIN. NICKEL OVERALL WITH .000010/(0.00025) MAX. GOLD FLASH OVERALL
3. THIS PART CONFORMS TO PRODUCT SPECIFICATION 02-09
4. TERMINAL FOR USE WITH .093/(2.36) SERIES HOUSINGS AND WILL ACCEPT 24 THRU 30 AWG WIRE.
5. INSERTION FORCE: 3.5 LBS. MAX. WHEN TERMINAL IS INSERTED INTO AN .093 SERIES HOUSING.
6. CONTACT RETENTION: 20 LBS. MIN.



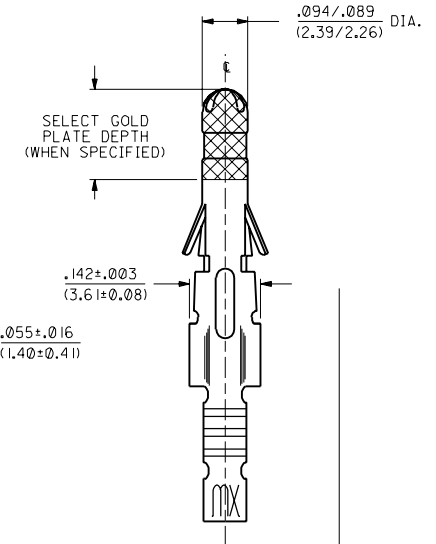
SECT. "A-A"



SECT. "B-B"



SECT. "C-C"



SELECT GOLD PLATE DEPTH (WHEN SPECIFIED)

AC	ADD - (P901) ECN #2001-0905 4-5-01 BW
AB1	REVISED ECN# UCR1999-0518 STAMBAUGH 99-2-9
AB	FINAL RELEASE ECR 11/04/54 2/20/91 RW

DIMENSIONS SHOWN METRIC (INCH UNLESS OTHERWISE SPECIFIED TOLERANCES ANGULAR ± 1/2°)		REVISE ONLY ON CAD SYSTEM	
INCH	METRIC	TITLE	CRIMP TERMINAL, MALE .093/(2.36) DIA. FOR 24 THRU 30 AWG WIRE
3 PLACE ± .010	---	PART NO.	SD-1434-*
2 PLACE ± .014	± 0.25	FILE NAME	S1434X1.DWG
1 PLACE ---	± 0.36	DATE	2/20/91
DRAFT WHERE APPLICABLE MUST REMAIN WITHIN DIMENSIONS		MOLEX INCORPORATED LITTLE ROCK, AR 69532 U.S.A.	
DRWG. BY: GWF	CHKD. BY: RW	SCALE	6 : 1
THIS DRAWING CONTAINS INFORMATION THAT IS PROPRIETARY TO MOLEX INC. AND SHOULD NOT BE USED WITHOUT WRITTEN PERMISSION.		SIZE	CP C