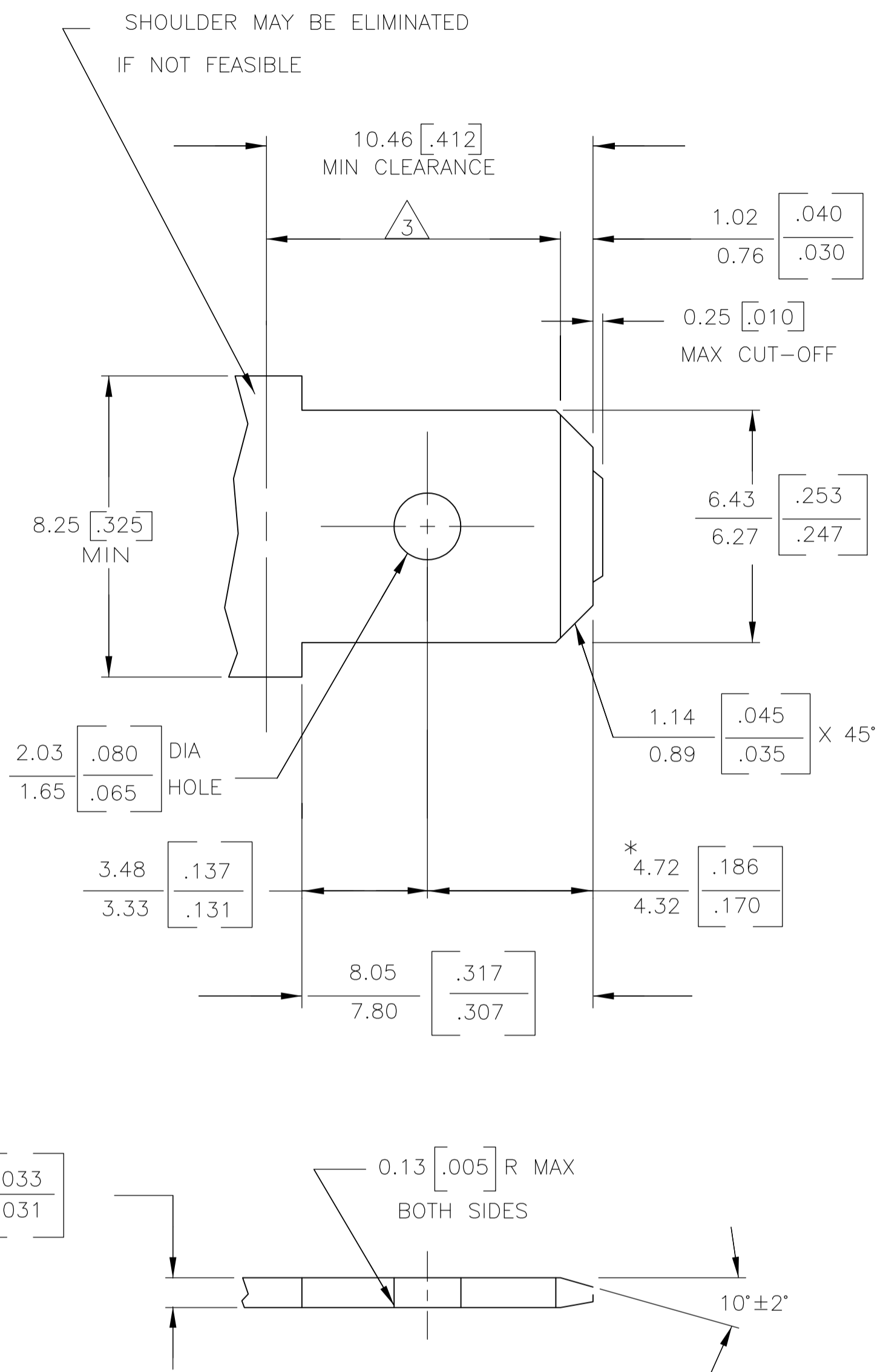
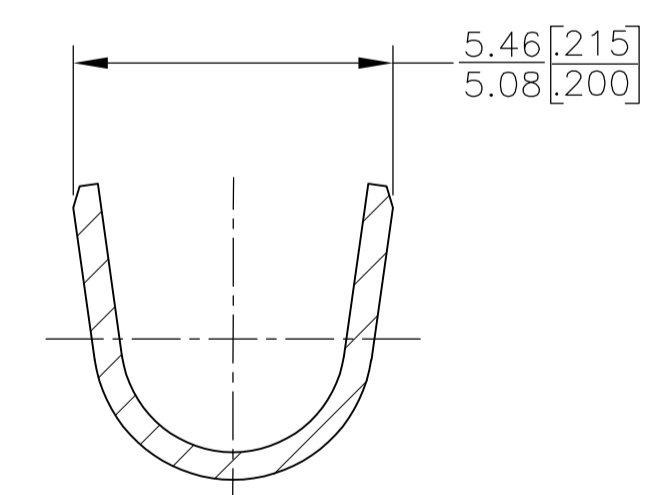
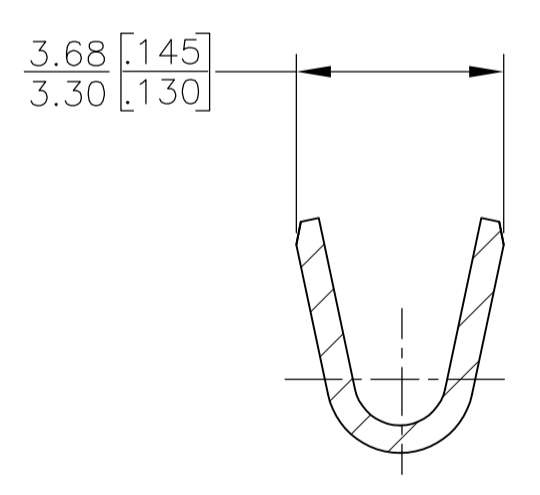
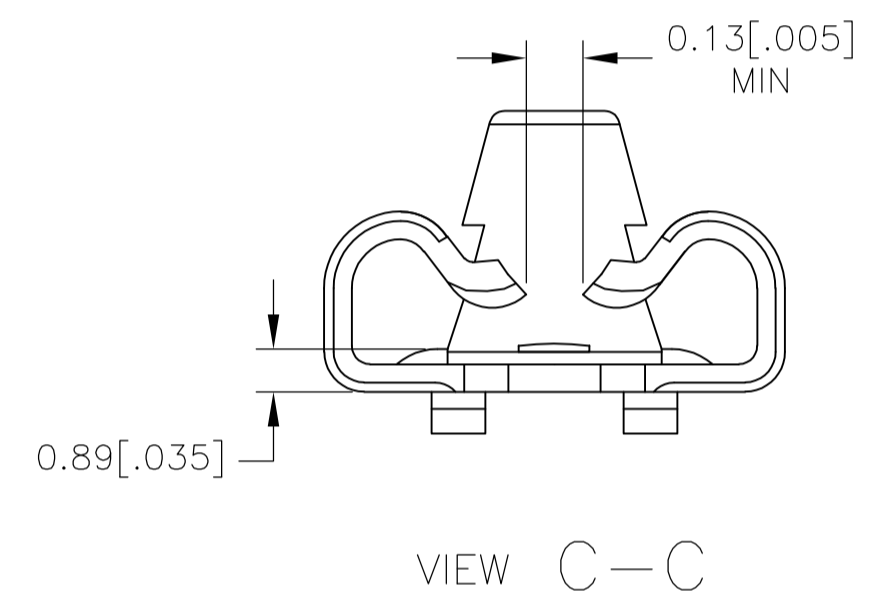
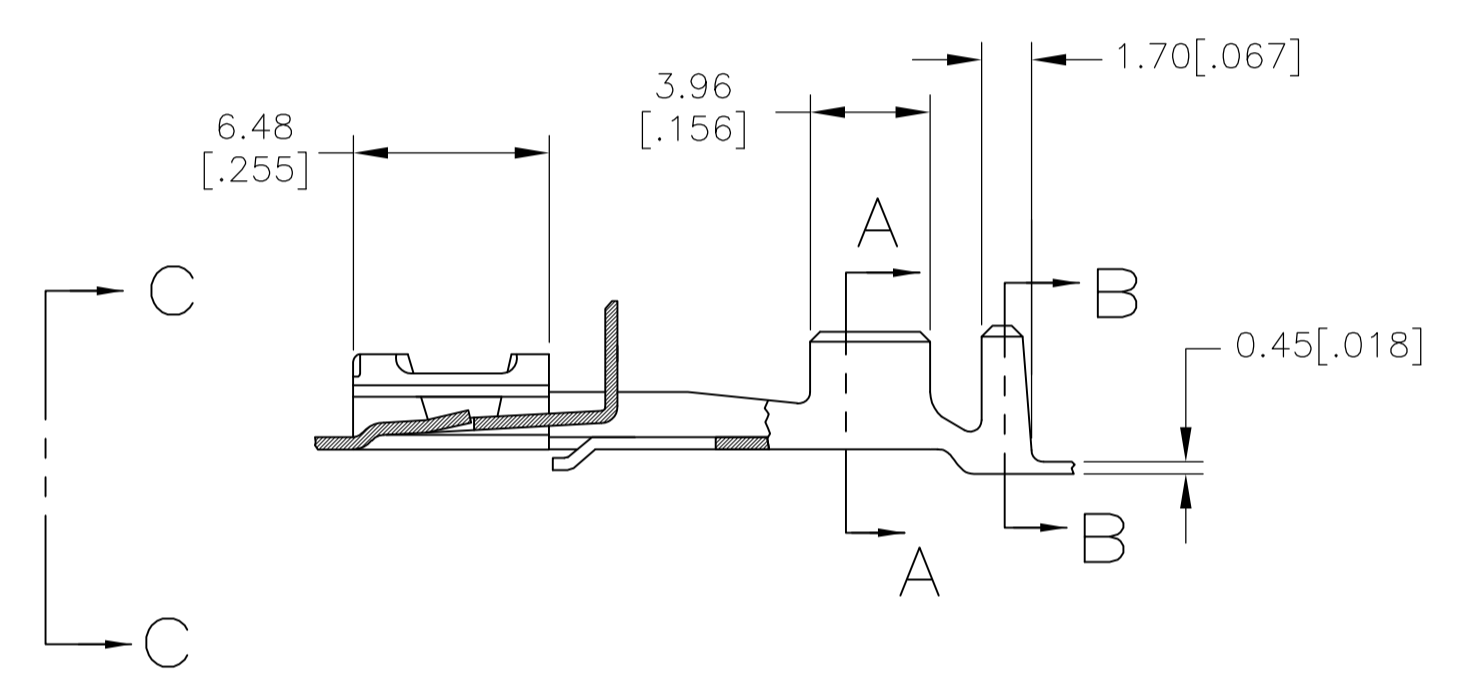
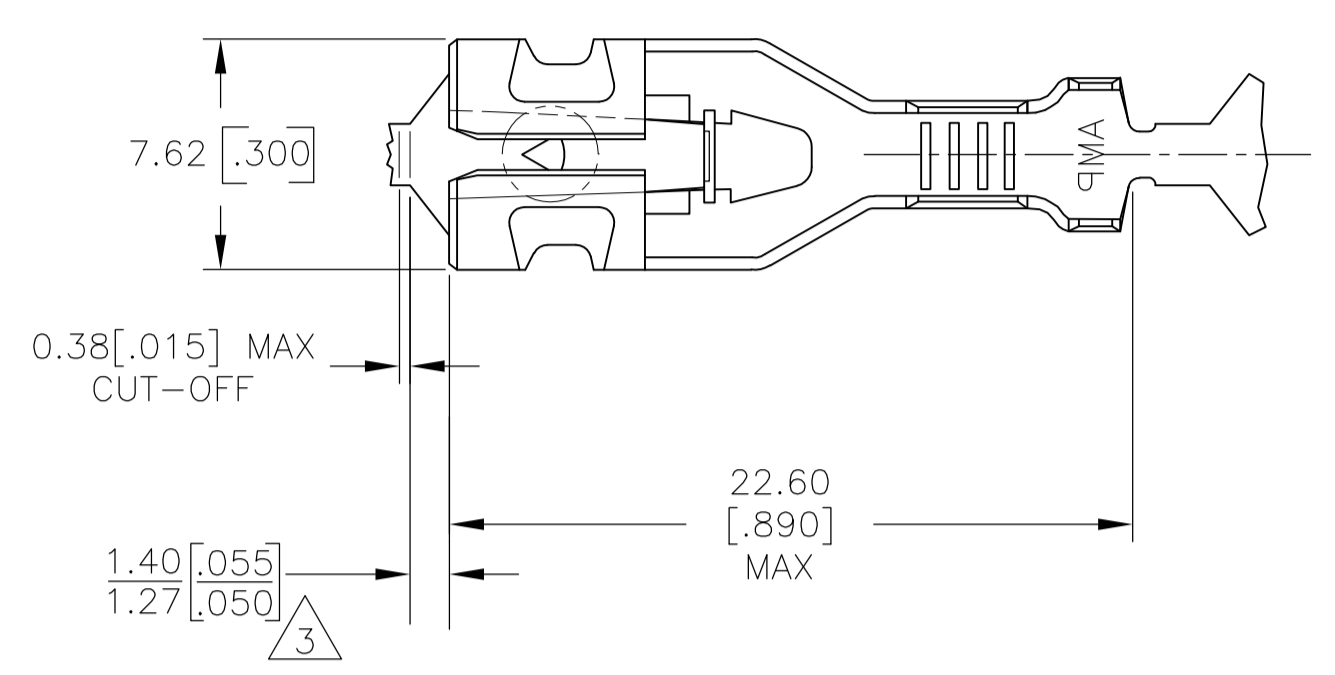


REVISIONS				
P	LYR	DESCRIPTION	DATE	BY
A1		REVISED PER ECR-17-006852	23MAY2017	BW MD

SUGGESTED MATING TAB



- MATL: ½ H BRASS OR NICKEL PL STEEL.
 - NO BURRS PERMISSIBLE AT HOLE.
 - MUST BE FLAT WITHIN 0.076 [.003] OVER THIS LENGTH.
 - TIN PLATING IS REQUIRED ON BRASS WHEN TERMINAL TEMP. IS OVER 225°F
 - HOLE MUST BE SYMMETRICAL ABOUT TAB Q̄ WITHIN 0.076 [.003]
- * TO BE USED ONLY WHEN SHOULDER IS ELIMINATED.



- DIMENSIONS IN BRACKETS ARE IN INCHES.
- PRODUCT PROVIDED IN STRIP FORM, BREAKS MAY BE PRESENT.
- THE 1.40 [.055] / 1.27 [.050] DIMENSION MUST BE MAINTAINED BY THE APPLICATOR CUT-OFF TO ENSURE THE PROPER LOCKING FUNCTION OF THE RECEPTACLE.

2.29-3.94 [.090-.155] DIA	#16-#14 AWG	2238104-1
INSULATION RANGE	WIRE SIZE	PART NUMBER

THIS DRAWING IS A CONTROLLED DOCUMENT.		DIN 13APR2016		EASVESH WARAD	
DIMENSIONS: mm(INCHES)		TOLERANCES UNLESS OTHERWISE SPECIFIED:		DIN 13APR2016	
0 PLC ± -		1 PLC ± -		2 PLC ± -	
3 PLC ± 0.25(.010)		4 PLC ± - ± 1°		ANGLES	
MATERIAL		FINISH		WEIGHT	
-		-		0	
CUSTOMER DRAWING		SCALE 4:1		SHEET 1 OF 1	
REV A1		DRAWING NO. 100779		PART NO. 2238104	
APPROVED BY MIKE DIDONATO		NAME MIKE DIDONATO		PRODUCT SPEC 108-143022	
APPLICATION SPEC 114-2074		SIZE		RESTRICTED TO	
-		-		-	