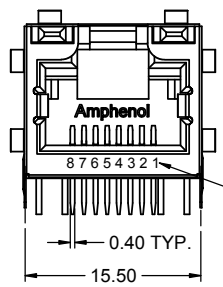
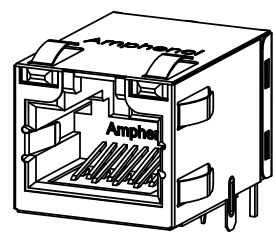
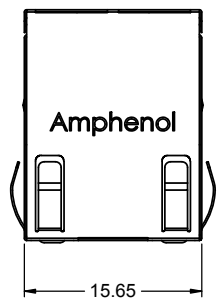
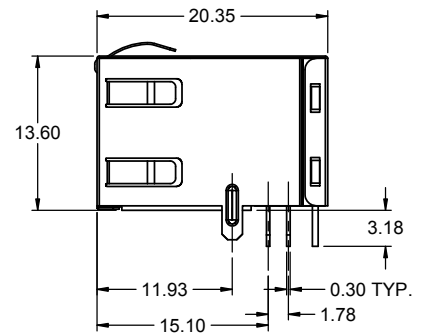


REVISIONS			
REV	DESCRIPTION, ECN, EAR NO.	DATE	APP'D
A	PROPOSAL DRAWING	MAY17/14	L.C.
B	FIX PCB LAYOUT	DEC8/15	L.C.



PIN NUMBERS SHOWN FOR REFERENCE ONLY



**NOTES:**

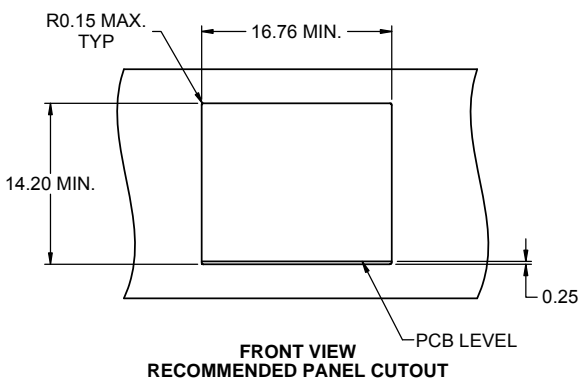
- VOLTAGE RATING: 125 VAC
- CURRENT RATING: 1.25 AMP
- INSULATING RESISTANCE: 500 MΩ
- DIELECTRIC STRENGTH: 1000 VACpeak 60Hz, 1 MIN
- DIELECTRIC WITHSTANDING VOLTAGE (CONTACT TO SHIELD): 1500 VACpeak 60Hz, 1 MIN
- PERFORMANCE CHARACTERISTIC:

FREQUENCY (MHz)	NEAR-END CROSSTALK (dB, MIN.)	RETURN LOSS (dB, MIN)	ATTENUATION (dB, MAX)
1.0	65.0	30.0	0.10
4.0	65.0	30.0	0.10
8.0	64.9	30.0	0.10
10.0	63.0	30.0	0.10
16.0	58.9	30.0	0.20
20.0	57.0	30.0	0.20
25.0	55.0	30.0	0.20
31.25	53.1	30.0	0.20
62.5	47.1	24.1	0.30
100.0	43.0	20.0	0.40

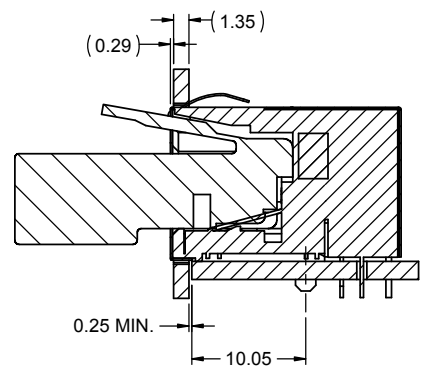
**MATERIALS:**

SHIELD - STAINLESS STEEL, WITH TIN-DIP ON SOLDER TABS  
 HOUSING - HIGH TEMP THERMOPLASTIC, UL 94V-0  
 INSERT - HIGH TEMP THERMOPLASTIC, UL 94V-0  
 PCB - FR-4  
 CONTACTS - PHOSPHOR BRONZE, 50µ" SELECTIVE GOLD PLATING FOR MATING AREA, 50µ" NICKEL UNDERPLATE, 100µ" MATTE TIN PLATING ON CONTACT TAILS

- STORAGE TEMPERATURE: -40° TO +85°C
- OPERATING TEMPERATURE: -40° TO +85°C
- MATES WITH MODULAR PLUG CONFORMING TO FCC PART 68, SUBPART F.
- RECOMMENDED SOLDER PROCESS: WAVE SOLDER, PEAK TEMP 260°C FOR 10 SECONDS.

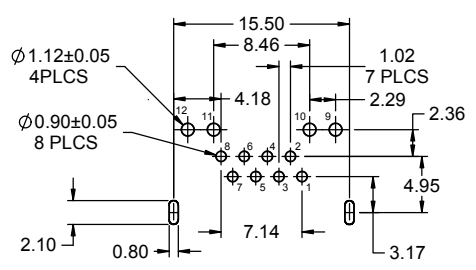


**FRONT VIEW  
RECOMMENDED PANEL CUTOUT**

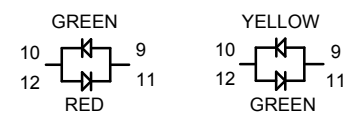
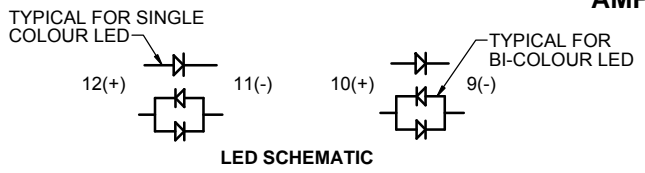


**SIDE VIEW SHOWING  
PLUG INSERTED**

**AMPHENOL PART NUMBER: RJE1A-188-5XX1**



**RECOMMENDED PCB LAYOUT  
COMPONENT SIDE OF BOARD  
TOLERANCE: ±0.05mm**



**BI-COLOUR LED DETAIL  
(RED/YELLOW AND GREEN/ORANGE  
LED ARE ALSO AVAILABLE)**

GOLD PLATING OPTION  
 1= 6µ" GOLD PLATING  
 2= 15µ" GOLD PLATING  
 3= 30µ" GOLD PLATING  
 4= 50µ" GOLD PLATING

REFER TO LED OPTIONS  
DRAWING FOR ORDERING  
CODES

UNLESS SPECIFIED OTHERWISE	DRAWN	J.FENG	MAY17/14
PRIMARY UNITS	MILLIMETERS	CHECKED	L.CHAN
SECONDARY		M.E. APP'D	
REFERENCE IN PARENTHESES		Q.A. APP'D	
GENERAL TOLERANCES	DWG APPR.		
1 DECIMAL PLACE	ENG. REL. NO.		
2 DECIMAL PLACES	REF.		
3 DECIMAL PLACES	THIRD ANGLE PROJECTION	DO NOT SCALE DRAWING	
ANGULAR DEGREES			

**Amphenol Canada Corp.**  
[www.amphenolcanada.com](http://www.amphenolcanada.com)

MODULAR JACK, SINGLE PORT, 8 POSITION, 8 CONTACTS, SHIELDED WITH TOP & SIDE TABS, WITH LEADS, TAB UP, CAT 5E, ROHS COMPLIANT

DWG. NO. **P-RJE1A-188-5XX1** REV **B**

CODE ID NO. **03554** DWG SIZE: **C** SCALE: **3:1** SHEET **1** OF **1**