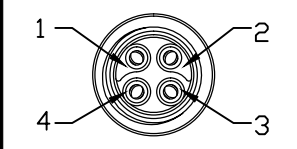
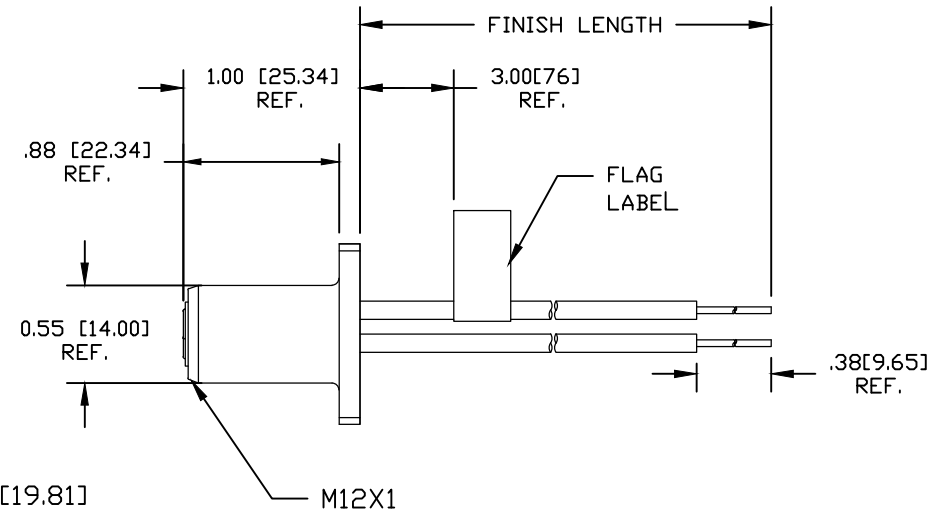
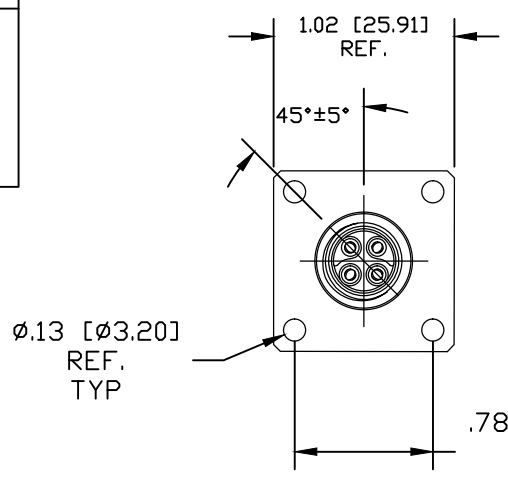


FEMALE FACE VIEW



- 1 GRAY
- 2 BROWN
- 3 BLUE
- 4 BLACK



ⓐ FRP4U36F01M0103

Wire type
14/1C AWG PPE

wire length
M005 = 0.5 Meter
M010 = 1 Meter
M100 = 10 Meter

MECHANICAL
CONTACT: GOLD/NICKEL OVER COPPER ALLOY
INSERT: BLACK NYLON
O-RING: VITON
RECEPTACLE SHELL: NICKEL PLATED BRASS
WIRE: 14 AWG CONDUCTORS, PPE

WIRE MARKING: xxxxx ECDWIRE TM 14 AWG Exxxxxx
RU AWM 11028 105C 600V VW-1 ---
CRU AWM I A/B 105C 600V FT1 CE ROHS

ELECTRICAL
VOLTAGE RATING: 300V AC/DC
AMPERAGE: 16A

ENVIRONMENTAL
PROTECTION: IP67

OPERATING TEMP: -20°C TO 105°C

UPDATE MATRIX NUMBER EC NO: IPG2017-0883 DRWN: MZIELINS 2017/03/20 CHKD: TWOLDEGE2017/03/22 APPR: BWOODMAN 2013/12/17 REV D	QUALITY SYMBOLS ▽=0 ◻=0	GENERAL TOLERANCES (UNLESS SPECIFIED) <table border="1"> <tr> <td></td> <td>mm</td> <td>INCH</td> </tr> <tr> <td>4 PLACES</td> <td>±---</td> <td>±---</td> </tr> <tr> <td>3 PLACES</td> <td>±---</td> <td>±.005</td> </tr> <tr> <td>2 PLACES</td> <td>±.13</td> <td>±.010</td> </tr> <tr> <td>1 PLACE</td> <td>±.25</td> <td>±.020</td> </tr> </table>		mm	INCH	4 PLACES	±---	±---	3 PLACES	±---	±.005	2 PLACES	±.13	±.010	1 PLACE	±.25	±.020	DIMENSION STYLE MM/INCH DRAWN BY DATE TWOLDEGE 2013/04/24 CHECKED BY DATE BRUPERT --- APPROVED BY DATE BWOODMAN 2013/12/17 MATERIAL NO.	SCALE 1:1 DESIGN UNITS INCH THIRD ANGLE PROJECTION	TITLE M12-POWER ASSEMBLY 4-POLE FEMALE F-CODE REC 14/1C AWG PPE WIRE LEADS MOLEX INCORPORATED DOCUMENT NO. SD-120502-002 SHEET NO. 1 OF 1
		mm	INCH																	
	4 PLACES	±---	±---																	
	3 PLACES	±---	±.005																	
2 PLACES	±.13	±.010																		
1 PLACE	±.25	±.020																		
DRAFT WHERE APPLICABLE MUST REMAIN WITHIN DIMENSIONS		SIZE A	THIS DRAWING CONTAINS INFORMATION THAT IS PROPRIETARY TO MOLEX INCORPORATED AND SHOULD NOT BE USED WITHOUT WRITTEN PERMISSION																	