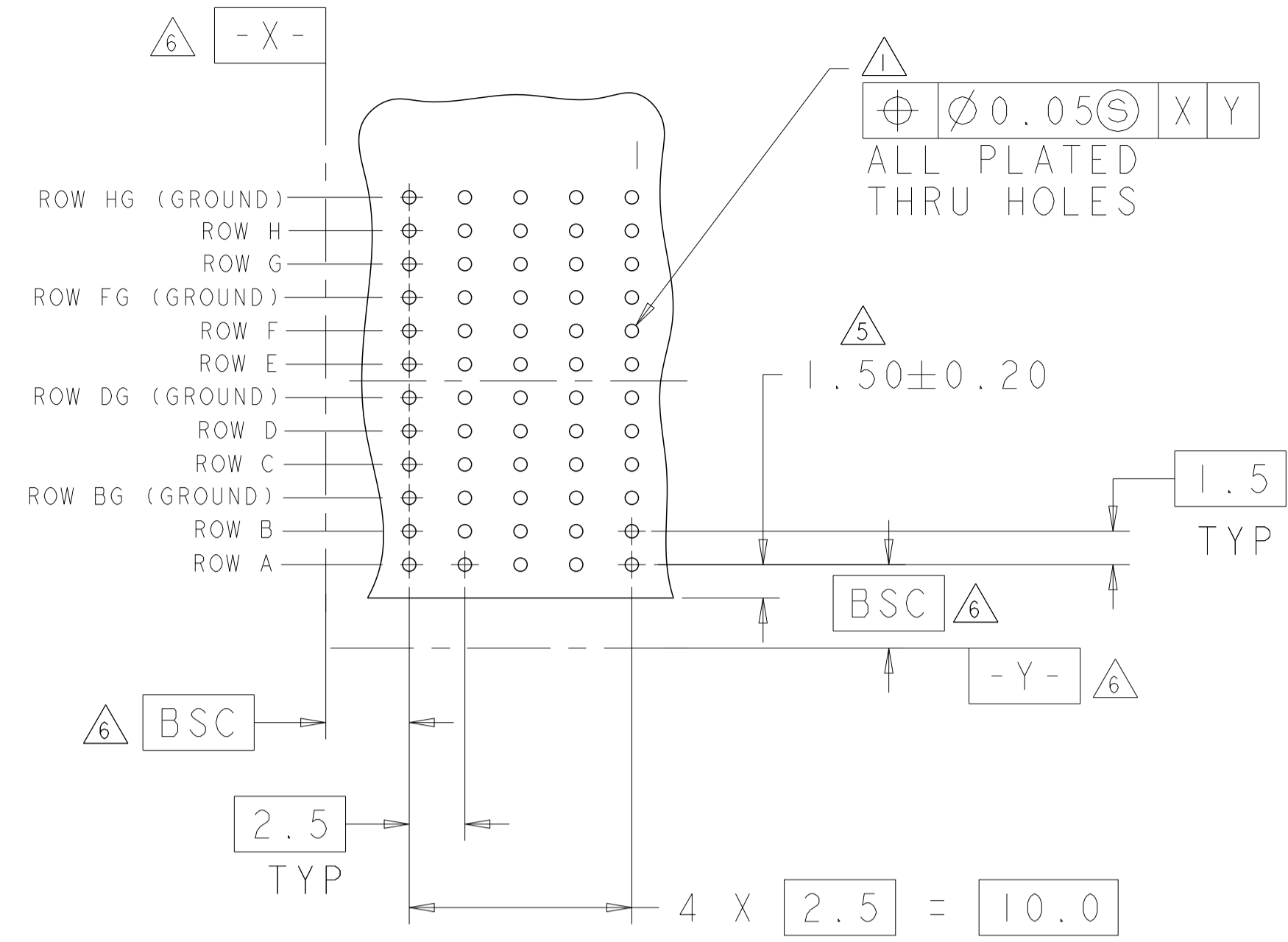
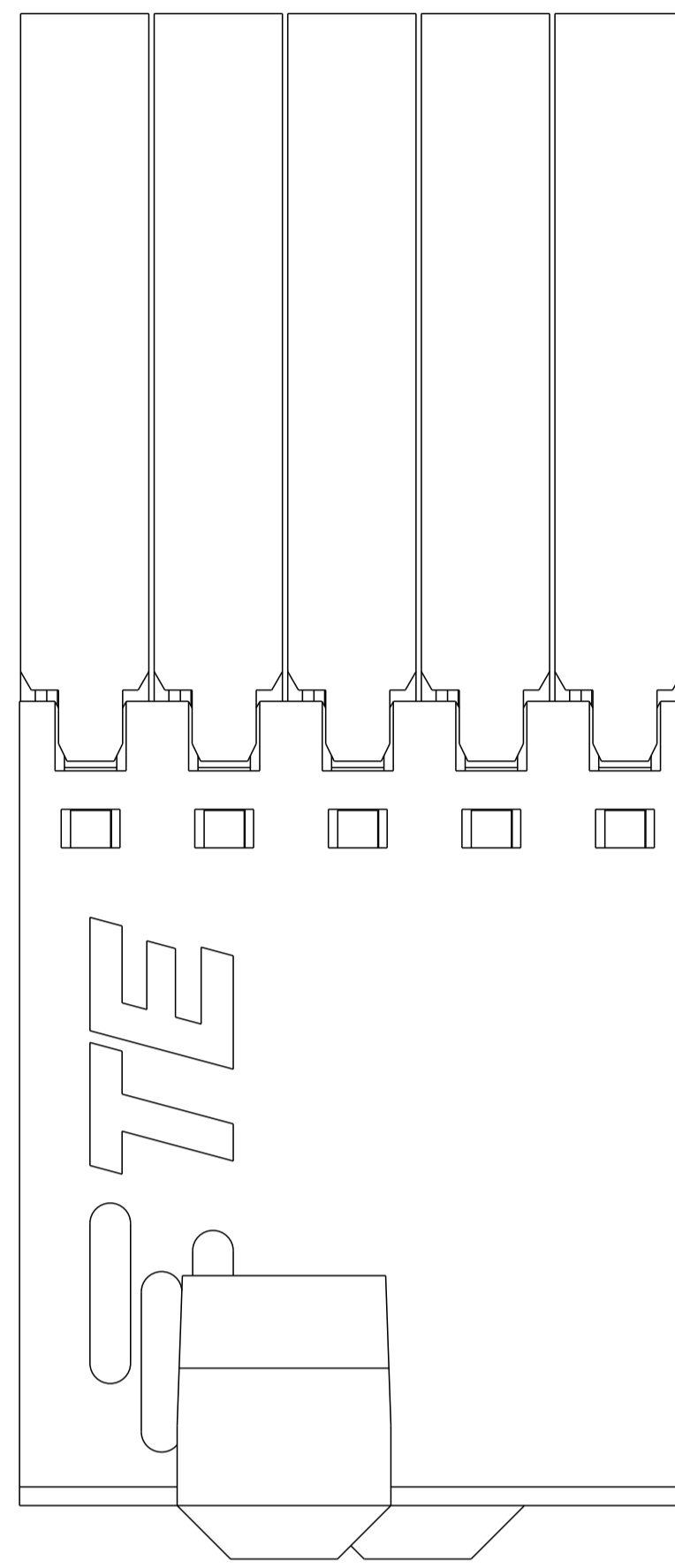
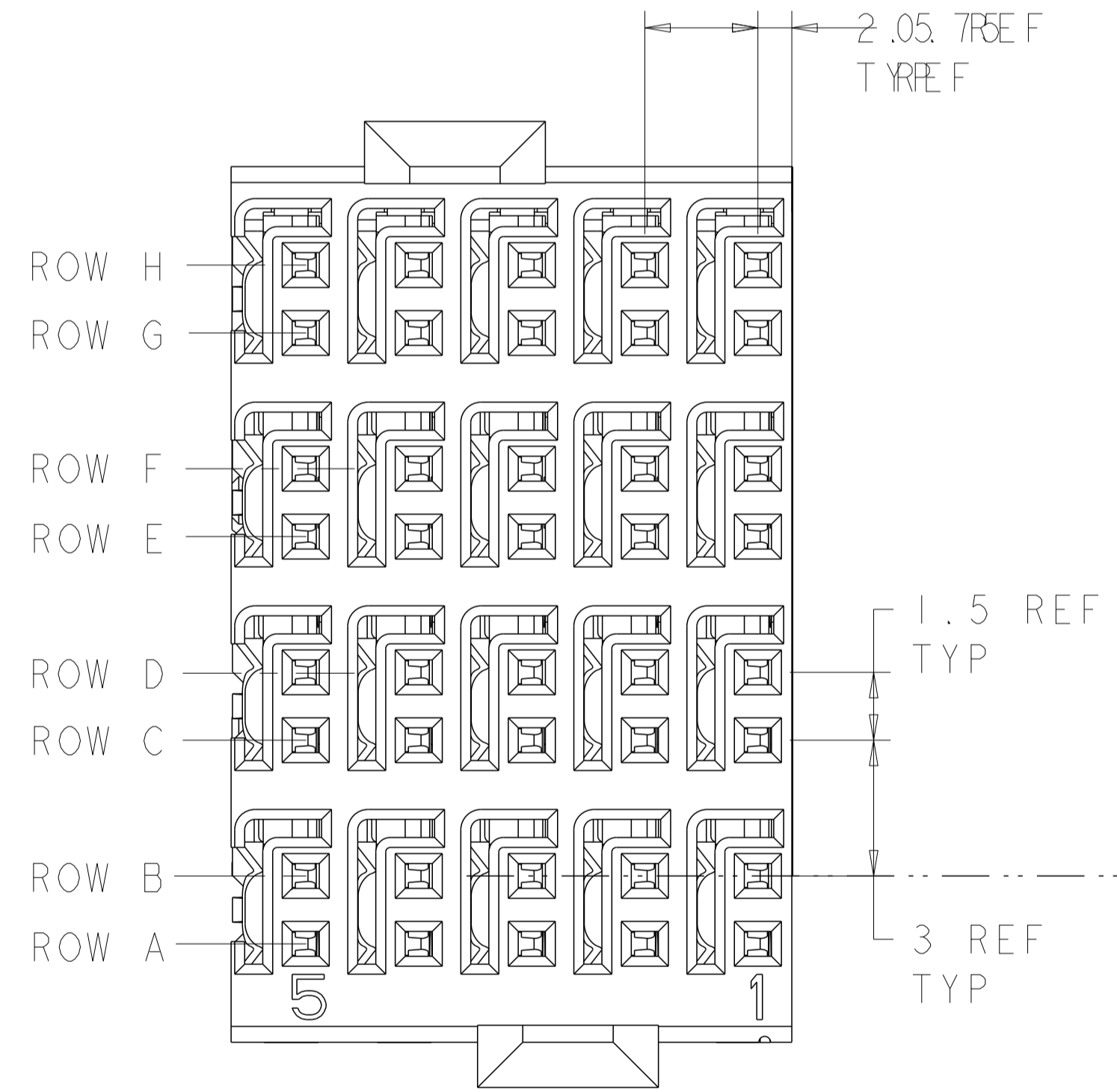


REVISIONS				
REV	DATE	DESCRIPTION	BY	CHKD
C	12APR2014	REVISED PER ECO-14-005095	AP	RP
D	19SEP2016	REVISED PER ECO-16-008845	AP	RP
E	13SEP2017	REVISED PER ECO-17-013036	AP	RP

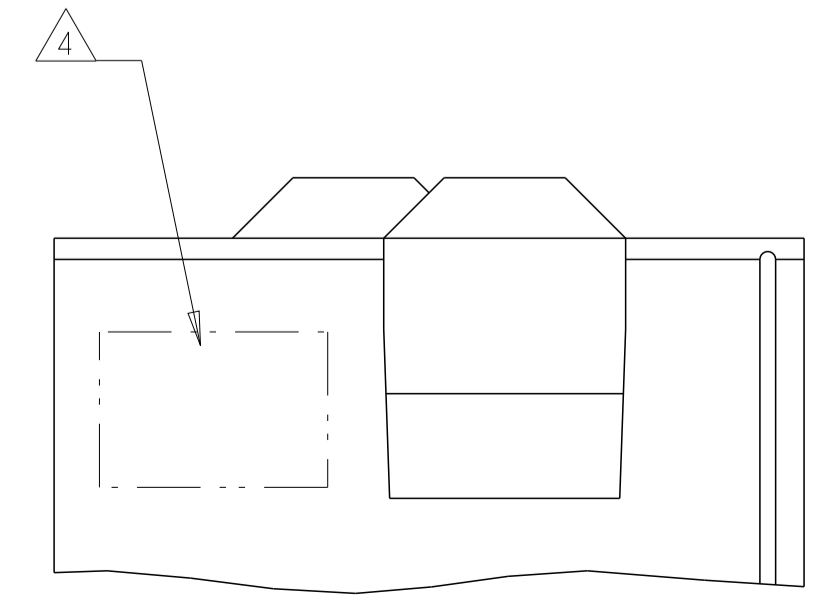
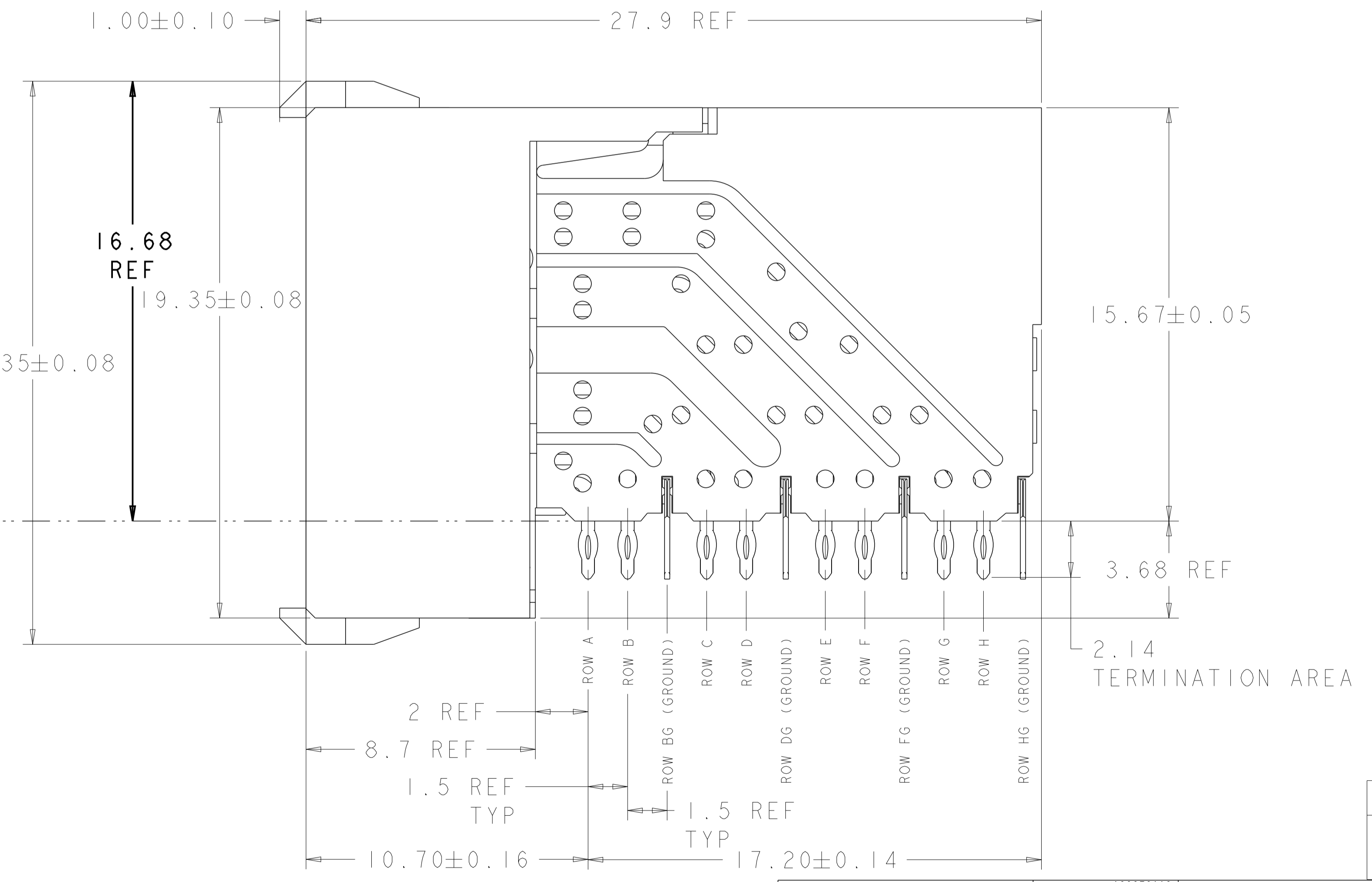


RECOMMENDED PC BOARD LAYOUT,  
 DAUGHTER BOARD,  
 COMPONENT SIDE SHOWN  
 SCALE 4:1

- 1 PCB HOLE DIM:  
 DRILLED HOLE = 0.700±0.025mm  
 FINISHED HOLE = 0.600±0.050mm  
 Cu THICKNESS = 0.0375±0.0125mm  
 SnPb THICKNESS = 0.007±0.003mm
- 2 MATERIAL:  
 SHIELD - PHOSPHOR BRONZE  
 CONTACT - COPPER-NICKEL-SILICON  
 HOUSING, CHICKLET AND CHICKLET COVER -  
 GLASS FILLED POLYESTER
- 3 FINISH: CONTACT AND SHIELD  
 MATING AREA - MEETS THE PERFORMANCE REQUIREMENTS OF  
 PRODCUT SPECIFICATION 108-2055; BASED ON TELCORDIA  
 GR-1217-CORE, APPLICATIONS IN UNCONTROLLED  
 ENVIRONMENTS  
 COMPLIANT PIN AREA - 0.5µm MIN BRIGHT TIN-LEAD  
 OVER 1.27µm MIN NICKEL
- 4 CONNECTOR MARKED WITH DATE CODE IN APPROXIMATE  
 AREA SHOWN
- 5 DIMENSION APPLIES TO CENTERLINE OF THRU HOLE.
- 6 DATUMS AND BASIC DIMENSIONS ESTABLISHED BY  
 CUSTOMER.
- 7. CONTACT AREA LUBRICATED WITH BELLCORE  
 APPROVED LUBRICANT. TECHNICAL REFERENCE:  
 GR-1217-CORE, ISSUE 1, NOVEMBER 1995.



TOP SURFACE OF  
 DAUGHTER CARD



1469251-1  
 PART NUMBER

THIS DRAWING IS A CONTROLLED DOCUMENT.		OWN S. J. MAGARO CHK 08SEP2012	DATE 02OCT2002	TE Connectivity	
DIMENSIONS:		TOLERANCES UNLESS OTHERWISE SPECIFIED:		NAME RECEPTACLE ASSEMBLY, 4 PAIR, 12.5mm HMZd	
mm	0 PLC ±	1 PLC ±	2 PLC ±	3 PLC ±	4 PLC ±
	ANGLES	FINISH		APPLICATION SPEC	
MATERIAL	WEIGHT	SIZE A100779	DRAWING NO C=1469251	RESTRICTED TO	
CUSTOMER DRAWING		SCALE 8:1	SHEET 1 OF 1	REV E	