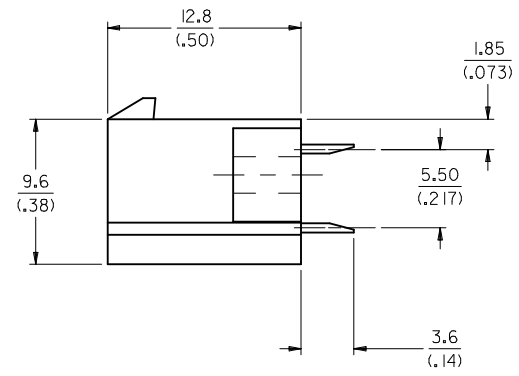


RECOMMENDED HOLE LAYOUT FOR
1.78(.070) MAX. THICK P.C. BOARD
VIEWED FROM COMPONENT SIDE

NOTES:

1. MATERIAL:
HOUSING: UNFILLED NYLON, 94V-2, NATURAL
TERMINAL: BRASS ALLOY
2. FINISH:
TERMINAL: .00090/(.000035) MIN. REFLOWED MATTE TIN PLATE OVER COPPER (PREPLATE)
(FINISH IS BRIGHT IN APPEARANCE, THICKNESS AS APPLIED PRIOR TO REFLOW)
3. PRODUCT SPECIFICATION: PS-5556-001
4. PACKAGING SPECIFICATION: PK-43946-001
5. PART MATES WITH MINI-FIT JR. RECEPTACLE #5557.
6. PART IS DESIGNED FOR USE WITH #4 OR M3 SELF TAPPING SCREWS.
7. CONNECTOR ASSEMBLIES ARE NOT TO BE MATED OR UNMATED WHILE CIRCUITS ARE LIVE.
8. PART CONFORMS TO CLASS "B" REQUIREMENTS OF COSMETIC SPECIFICATION PS-45499-002.
9. TEXT ON PART IS FOR REFERENCE ONLY. TEXT AND TEXT LOCATION MAY VARY DEPENDING ON PART NUMBER AND/OR TOOL.



UPDATE NOTE 2 EC NO: UCP2017-0446 DRAWN:SLAFTER 2016/08/26 CHKD:JBELL 2016/08/25 APPR:FSMITH 2016/09/21	DESCRIPTION	QUALITY SYMBOLS	GENERAL TOLERANCES (UNLESS SPECIFIED)	DIMENSION STYLE	SCALE	DESIGN UNITS	THIRD ANGLE PROJECTION
		▽=0	mm INCH	MM/IN	4:1	METRIC	
B3	REV	▽=0	4 PLACES ± --- ± ---	DRAWN BY	DATE	TITLE	
		▽=0	3 PLACES ± --- ± .010	MBANDURA	1997/06/20	MINI-FIT JR. 6 CIRCUIT VERTICAL HEADER ASSEMBLY WITH MOUNTING FLANGES	
B3	REV	▽=0	2 PLACES ± 0.25 ± .014	CHECKED BY	DATE	molex	
		▽=0	1 PLACE ± 0.35 ± ---	SMUELLER	1997/06/18	DOCUMENT NO.	SD-43946-006
B3	REV	▽=0	0 PLACE ± --- ± ---	APPROVED BY	DATE	SHEET NO.	1 OF 1
			ANGULAR ±1/2°	FSMITH	2016/09/21	THIS DRAWING CONTAINS INFORMATION THAT IS PROPRIETARY TO MOLEX INCORPORATED AND SHOULD NOT BE USED WITHOUT WRITTEN PERMISSION	