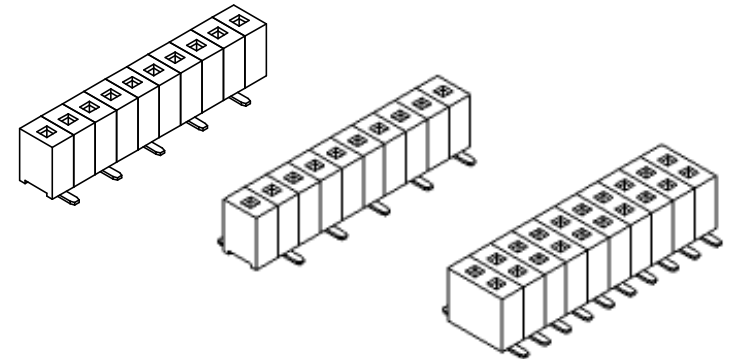
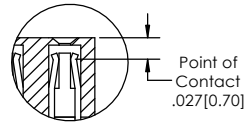
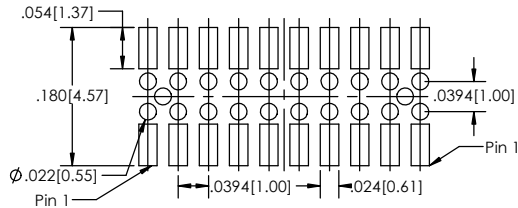
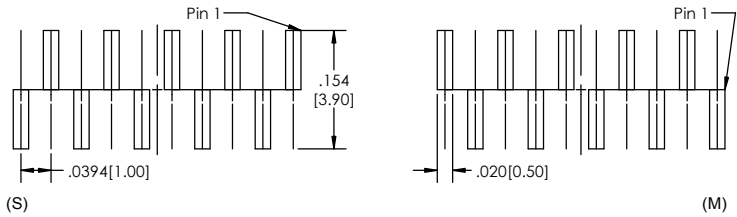


**Recommended P.C. Board Layout**

SCALE 8:1

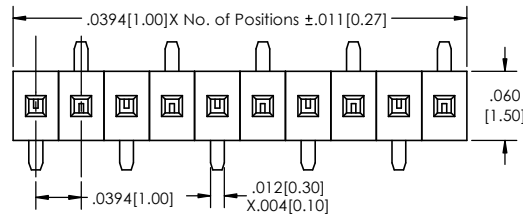
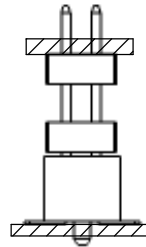


LSMSS-7 **XX** - **X** - **06** - **XX** - **XXX** - **X** - **XX** - **X** - **XX** - **LF**  
**(A) (B) (C) (D) (E) (F) (G) (H) (I) (J)**

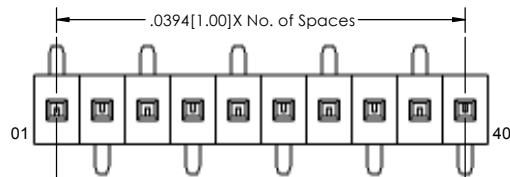
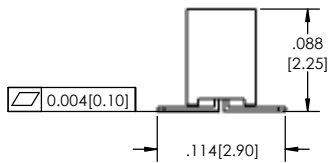
- A. Pins Per Row**  
- 1 through 40
- B. Row Specification**  
- S= Single Row  
- D= Double Row
- C. Style**  
- 06= Vertical Surface Mount
- D. Plating Options**  
- See Plating Options below
- E. Polarized Position**  
- Leave blank if not needed  
- If required, specify empty pin position  
- e.g. 012 for Pin 12
- F. Footprint**  
- S= Pin 1 right  
- M= Pin 1 left
- G. Packing Information**  
- TR= Tape and Reel  
- TB= Tube
- H. Pad**  
- P= Plastic  
- K= Kapton  
- O= No Pad  
- If left blank, packaging at MLE's discretion  
- Pad may be metal, mylar or plastic
- I. Alignment Pin** (Option only available for the Double Row)  
- Leave blank if not needed  
- AP= With
- J. Lead Free**

Mates with:  
BSTC-7  
TSHC-7  
TSHCR-7

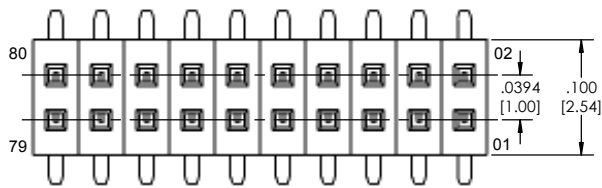
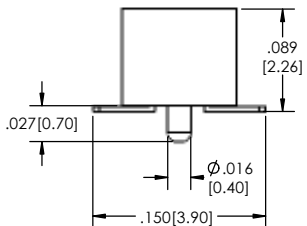
**APPLICATION**



**SINGLE (S) ROW**



**SINGLE (M) ROW**



**DOUBLE ROW**

Plating options	
T	Matte Tin all Over
F	Gold Flash over Entire Pin
GT 10	10µ Gold on Contact Area/ Matte Tin on Tail

**Specifications:**  
 Current Rating: 1.0 Ampere  
 Insulation Resistance: 1000M Ohms Min.  
 Dielectric Withstanding: 300V AC  
 Contact Resistance: 20M Ohms Max.  
 Operation Temperature: -40°C to +105°C  
 Max. Process Temperature  
 Wave Solder: Solder Temp. 260 ±5°C  
 Immersion period: 5 ±5 secs.  
 Reflow Solder: Pre-Heat Temp: 100~150°C for 60 secs max.  
 Temperature: min. 210°C for 30 secs max.  
 Peak Temperature: 260 ±5°C, 10 ±5 secs.  
 Manual Solder: 245 ±3°C 3~5 secs.

**Materials:**  
 Contact Material: Phosphor Bronze  
 Insulator Material: LCP, UL94V-0

Tails may be clipped to achieve specific dimensions.  
 Products cut to specific sizes are uncancellable/ nonreturnable.  
 Parts are subject to change without notice.



**PROPRIETARY AND CONFIDENTIAL**  
 THE INFORMATION CONTAINED IN THIS DRAWING IS THE SOLE PROPERTY OF Major League Electronics. ANY REPRODUCTION IN PART OR AS A WHOLE WITHOUT THE WRITTEN PERMISSION OF Major League Electronics IS PROHIBITED.

UNLESS OTHERWISE SPECIFIED:		NAME		DATE	
DRAWN		EOW		02/23/15	
CHECKED		GWE		02/23/15	
ENG APPR.					
MFG APPR.					
INTERPRET GEOMETRIC TOLERANCING PER:		ADDRESS:			
MATERIAL:		2533 Centennial Blvd. Jeffersonville, IN 47130			
NEXT ASSY		USED ON		FINISH	
APPLICATION		DO NOT SCALE DRAWING		TITLE: LSMSS-7-V SERIES	
				SIZE DWG. NO.	
				SCALE 16:1	
				SHEET 1 OF 1	



2533 Centennial Blvd.  
 Jeffersonville, IN 47130  
 Phone: 812-670-4174  
 Fax: 812-670-4175  
 E-Mail: mle@mlelectronics.com

SIZE DWG. NO. **C**  
 TITLE: LSMSS-7-V SERIES  
 SCALE 16:1  
 SHEET 1 OF 1