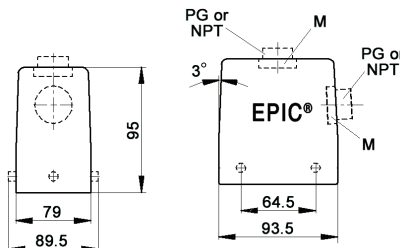


## EPIC® HA 48 standard hood

Hood with double lever bolts



all dimensions are in mm

**Technical data**

**IP Protection class:** NEMA 4, NEMA 12  
IP65

**Complete the installation**

HA dust covers  
page 429

**Approvals**

**PG**

PG hood		SKINTOP® gland	
size	part number	plastic	metal
<b>Top entry</b>			
PG 29	106318	53015060	52015760
<b>Side entry</b>			
PG 29	106308	53015060	52015760

PG hood provided with EPIC® SM/SP gland

**NPT**

NPT hood		SKINTOP® gland	
size	part number	plastic	metal
<b>Top entry</b>			
1"	106318NP	S1101	53112044
<b>Side entry</b>			
1"	106308NP	S1101	53112044

NPT hood provided with NPT fitting

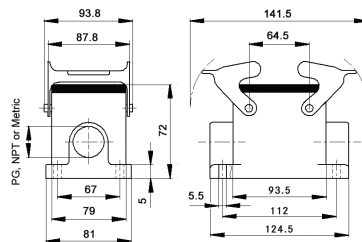
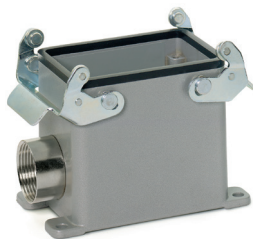
**metric**

Metric hood*		SKINTOP® gland	
size	part number	plastic	metal
<b>Top entry</b>			
M32	19631800	53111040	53112040
M40	19636600	53111050	53112050
<b>Side entry</b>			
M32	19630800	53111040	53112040
M40	19635600	53111050	53112050

\* Metric hoods do not come with a neck

## EPIC® HA 48 surface mount base

Surface mount base with double levers



all dimensions are in mm

**Technical data**

**IP Protection class:** NEMA 4, NEMA 12  
IP65

**Complete the installation**

HA dust covers  
page 429

**Approvals**

**PG**

PG base		SKINTOP® gland	
size	part number	plastic	metal
<b>One entry</b>			
PG 29	106338	53015060	52015760

PG base provided with EPIC® SM/SP gland

**NPT**

NPT base		SKINTOP® gland	
size	part number	plastic	metal
<b>One entry</b>			
1"	106338NP	S1101	53112044

NPT base provided with NPT fitting

**metric**

Metric base*		SKINTOP® gland	
size	part number	plastic	metal
<b>One entry</b>			
M32	19633800	53111040	53112040
M40	19638600	53111050	53112050
<b>Two entries</b>			
M40	19639600	53111050	53112050

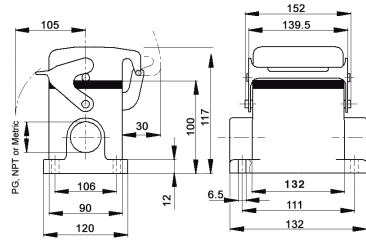
\* Metric bases do not come with a neck

If not otherwise specified, all values relating to the product are nominal values. Photographs are not to scale and are not true representations of the products in question.



# EPIC® HA 64 surface mount base

## Surface mount base with single lever



all dimensions are in mm

**Technical data**

**IP Protection class:** NEMA 4, NEMA 12  
IP65

**Complete the installation**

 HA dust covers page 429

**Approvals**

**PG**

PG base size	PG base part number	Dust cover	SKINTOP® gland	
			plastic	metal
<b>One entry</b>				
29	101650HA	no	53015060	52015760
29	101670HA	yes	53015060	52015760
36	101651HA	no	53015070	52105765
36	101671HA	yes	53015070	52015765
<b>Two entries</b>				
29	101660HA	no	53015060	52015760
29	101680HA	yes	53015060	52015760
36	101661HA	no	53015070	52105765
36	101681HA	yes	53015070	52015765

PG base provided with EPIC® SM/SP gland

**NPT**

NPT base size	NPT base part number	Dust cover	SKINTOP® gland	
			plastic	metal
<b>One entry</b>				
1"	101650NP-HA	no	S 1101	53112044
1"	101670NP-HA	yes	S 1101	53112044
1¼"	101651NP-HA	no	—	53112054
1¼"	101671NP-HA	yes	—	53112054
<b>Two entries</b>				
1"	101660NP-HA	no	S 1101	53112044
1"	101680NP-HA	yes	S 1101	53112044
1¼"	101661NP-HA	no	—	53112054
1¼"	101681NP-HA	yes	—	53112054

NPT base provided with NPT fitting

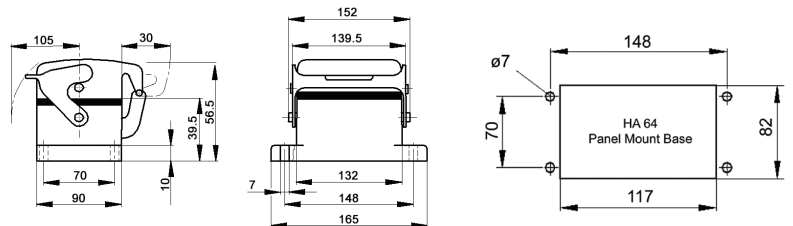
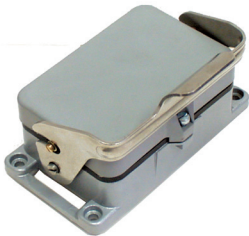
**metric**

Metric base* size	Metric base* part number	Dust cover	SKINTOP® gland	
			plastic	metal
<b>One entry</b>				
32	191650HA	no	53111040	53112040
32	191670HA	yes	53111040	53112040
40	191651HA	no	53111050	53112050
40	191671HA	yes	53111050	53112050
<b>Two entries</b>				
32	191660HA	no	53111040	53112040
32	191680HA	yes	53111040	53112040
40	191661HA	no	53111050	53112050
40	191681HA	yes	53111050	53112050

\* Metric bases do not come with a neck

# EPIC® HA 64 panel mount base

## Panel mount base with single lever



all dimensions are in mm

**Technical data**

**IP Protection class:** NEMA 4, NEMA 12  
IP65

**Complete the installation**

 HA dust covers page 429

**Approvals**

Dust cover included	Hardware	Part number
no	—	101610HA
yes	dust cover bolts & hold down screw	101525HA
yes	hold down screw	101520HA

If not otherwise specified, all values relating to the product are nominal values. Photographs are not to scale and are not true representations of the products in question.