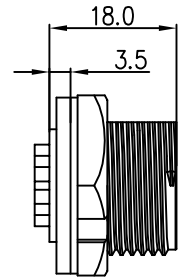


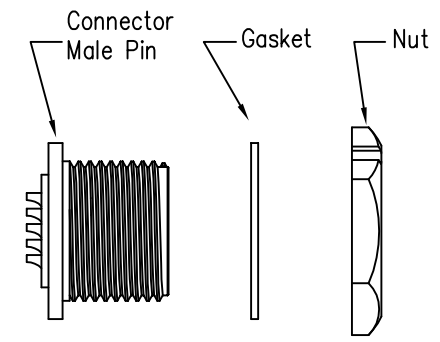
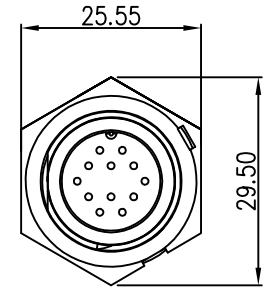
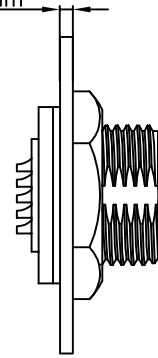
REV.	ECN NO.	DESCRIPTION	SIGN	DATE
C1	N/A	INITIAL DRAWING	Liu	2020/05/13



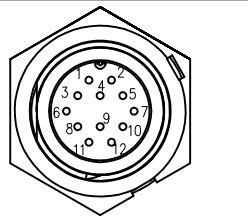
Recommended Panel Cut-Out



Panel T: Max 3.5mm



23XXX515-01
Pin Number

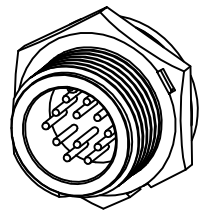


12 Pin

P/N: 23012515-01

Pin Assignments Front View

- Specification:
- 1.Operation Temperature: -45°C~105°C.
 - 2.Insulation Resistance: 100MΩ at DC500V.
 - 3.Contact Resistance: <math>< 10\text{m}\Omega</math>
 - 4.Withstand Voltage: 1000V AC
 - 5.Operating Current: 5A
 - 6.Operating Voltage: DC 30V
 - 7.Waterproof Rate: IP67 (Mated)
 - 8.Housing: Nylon, Black
 - 9.Male Pin: Copper Alloy, Gold Plated
 - 10.Gasket: Silicon Gray
 - 11.Panel Nut: Nylon, Black
 - 12.Torque Rate: 0.8~1.0N · m
 - 13.RoHS Compliant.
 - 14.Mating Cap P/N: 806-00021-00



CHOGORI

UNIT:mm		DESCRIPTION	Middle Series Screw Type Front Mount With Male Pin	PART NO	23012515-01	DRAWN BY	Liu	DATE	2020/05/17
TOLERANCE	.X ±0.25 .XX ±0.15 .XXX ±0.05 ANGLES ±1°	SCALE	1:1	SHEET	1 OF 1	CHECKED BY	Mo	DATE	2020/05/17
REV.	C1	SIZE	A4	* : Inspection Item		APPROVED BY	Panson	DATE	2020/05/17

THIS INFORMATION IS CONFIDENTIAL AND IS DISCLOSED TO YOU ON CONDITION THAT NO FURTHER DISCLOSURE IS MADE BY YOU TO OTHER THAN CHOGORI PERSONNEL WITHOUT AUTHORIZATION FROM CHOGORI CORP.