

# CR2032 LITHIUM MANGANESE DIOXIDE



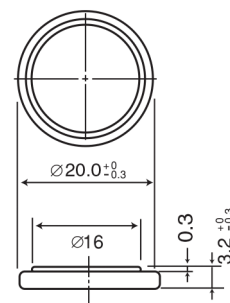
## Features & Benefits

- Good pulse capability
- High discharge characteristics
- Stable voltage level during discharge
- Long-term reliability

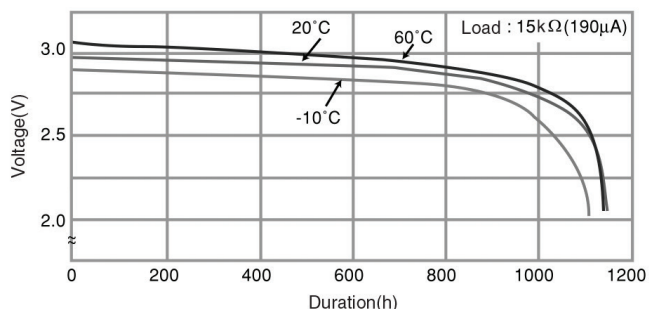
## Specifications

Nominal Capacity:	225 mAh
Nominal Voltage:	3V
Weight:	2.9g
Operating Temperature:	-30°C - +60°C

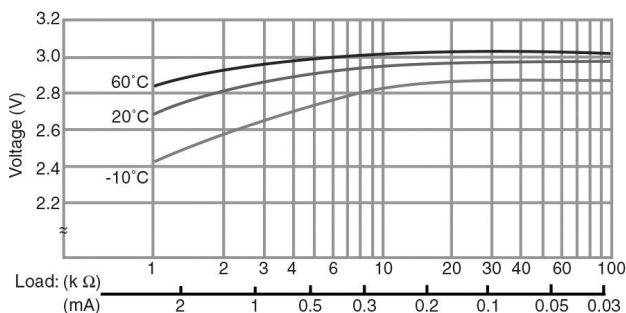
## Dimensions



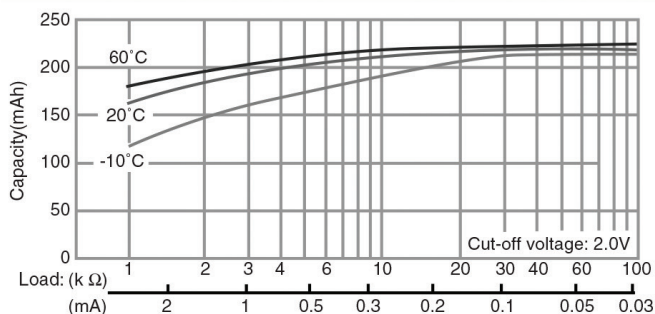
## Temperature Characteristics



## Operating Voltage vs. Load Resistance (voltage at 50% discharge depth)



## Capacity vs. Load Resistance



## ⚠ WARNING

Serious harm in as little as 2-hours if swallowed. **KEEP AWAY FROM CHILDREN.** Seek immediate medical help if swallowed. Have the doctor call the poison center at 1-(800) 498 8666 for US and Canada. International: 303-389-1300

Product manufacturers should design their products to meet the safety requirements of Annex I of UL60065 or equivalent standards.

For more information on how Panasonic can assist you with your battery power solution needs call **877-726-2228**, visit [www.na.industrial.panasonic.com/products/batteries](http://www.na.industrial.panasonic.com/products/batteries) or e-mail [oembatteries@us.panasonic.com](mailto:oembatteries@us.panasonic.com).

*The data in this document is for descriptive purposes only and is not intended to make or imply any guarantee or warranty.*