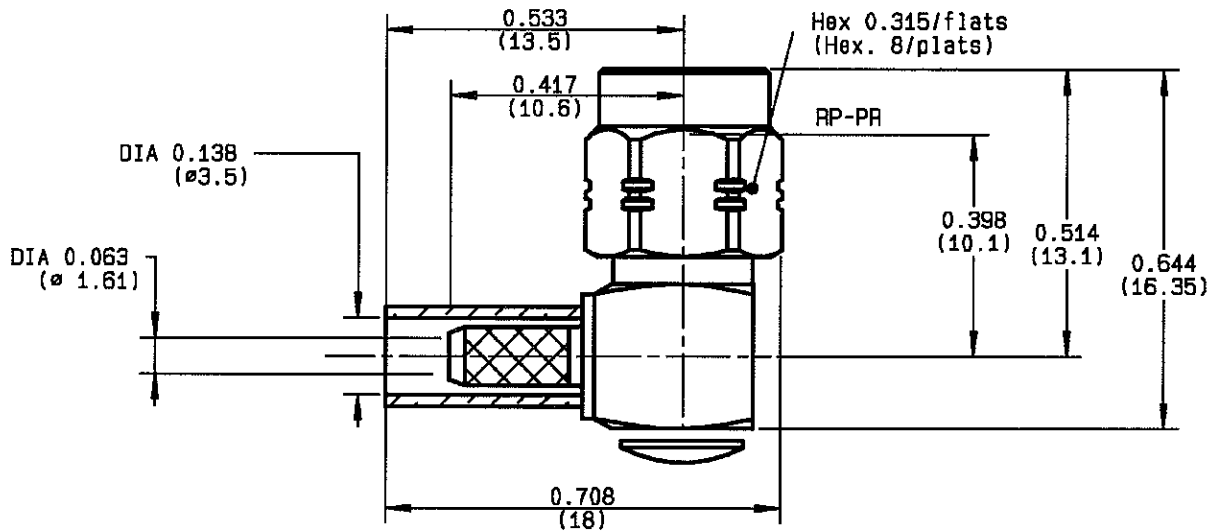


**RIGHT ANGLE PLUG CRIMP TYPE  
CABLE 2.6/50 D**

**R124.174.120  
SERIES SMA-COM**



NOMINAL IMPEDANCE	<b>50</b> Ω	CABLES : <b>K02252D</b> <b>RD 316</b>
FREQUENCY RANGE	<b>0-12.4</b> GHz	
TEMPERATURE RATING	<b>-65/+165</b> °C	
V.S.W.R	<b>1.15 + .03</b> x F(GHz)Maxi	
RF INSERTION LOSS	<b>0.05</b> √F(GHz) dB Maxi	
VOLTAGE RATING	<b>250</b> Veff Maxi	
DIELECTRIC WITHSTANDING VOLTAGE	<b>750</b> Veff Mini	
INSULATION RESISTANCE	<b>5000</b> MΩMini	OTHERS CHARACTERISTICS
HERMETIC SEAL	<b>NA</b> Atm.cm <sup>3</sup> /s	CABLE RETENTION
LEAKAGE (pressurized only)	<b>NA</b>	<b>110</b> N Mini
MECHANICAL DURABILITY	<b>100</b> Cycles	CENTER CONTACT RETENTION
WEIGHT	<b>5.14</b> gr	Axial force - mating end
SPECIFICATION		<b>27</b> N Mini
		Axial force - opposite end
		<b>27</b> N Mini
		Torque
		<b>NA</b> cm.N Mini
		RECOMMENDED TORQUES
		Mating
		<b>60</b> cm.N
		Panel nut
		<b>NA</b> cm.N
		Clamp nut
		<b>NA</b> cm.N

CONNECTOR PARTS	MATERIALS	FINISH	(all values are given in micrometers)
BODY	BRASS	BBR 2	
OUTER CONTACT			
CENTER CONTACT	BRASS	GOLD 1.3 OVER COPPER 2.5	
INSULATOR	PTFE	-	
GASKET		-	
OTHERS PIECES	BRASS	BBR 2	

TRIGUES

ISSUE  
**0708E**

CREATION DATE  
**30/09/1993**

FILE PART-NUMBER  
**EPC 97-03**



**RADIALL®**

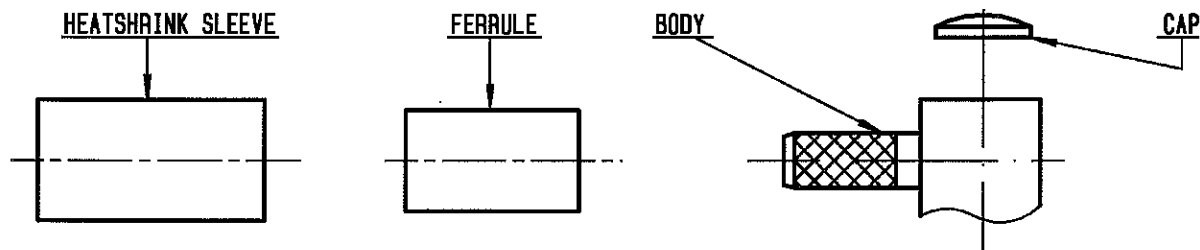
The information given here is subject to change without notice.  
Design changes may be in order to improve the product.

*Connect to the future*



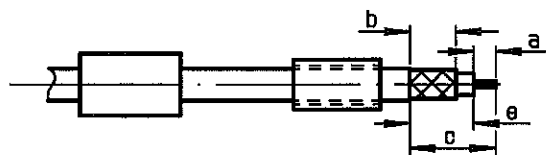
**R124.174.120**

ISSUE **0708E** SERIES **SMA-COM**



①

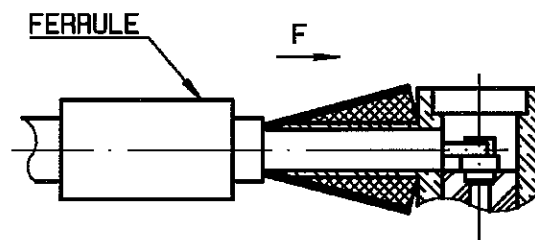
Slide heatshrink sleeve (R280.637.020 - Option) and the ferrule onto cable .  
Strip the cable .



Stripping	a	b	c	d	e
inch	0.079	0.256	0.472	0	0.394
mm	2	6.5	12		10

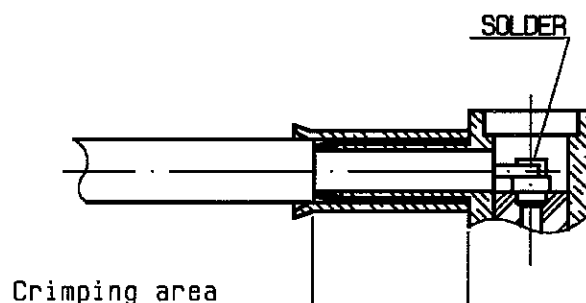
②

Fan the braid .  
Push connector body under the braid .  
Slide ferrule over braid  
( in direction F )



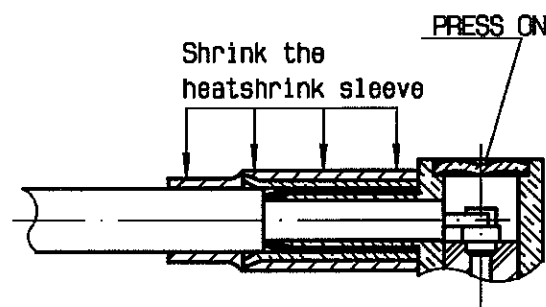
③

Crimp the ferrule with crimping tool R282 271 000 ( Hex. : 0.151 ) or crimping tool R 282 293 000 ( M22520/5-01 ) + dies R 282 235 037 ( M22520/5-37 )  
Solder inner conductor .



④

Place the cap into body.  
Press cap flush or slightly below surface of body assembly .  
Slide sleeve over ferrule and heatshrink in place (Option) .



TRIQUES