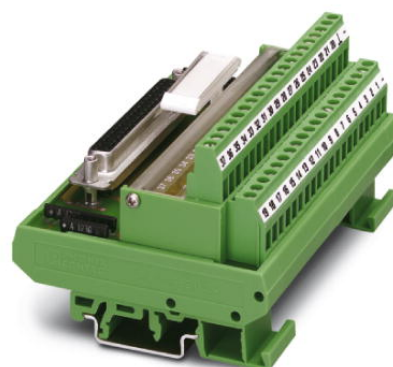


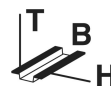
FLKM-D37 SUB/B/LA

Order No.: 2281704




<http://eshop.phoenixcontact.de/phoenix/treeViewClick.do?UID=2281704>

VARIOFACE module, with screw connection and D-Subminiature socket strip, for mounting on NS 35/7.5 or NS 32, with LED, 37-pos.



Commercial data

GTIN (EAN)	 4 017918 054953
sales group	I010
Pack	1 pcs.
Customs tariff	85369010
Catalog page information	Page 249 (IF-2007)

Product notes

WEEE/RoHS-compliant since:
10/13/2006



<http://www.download.phoenixcontact.com>
Please note that the data given here has been taken from the online catalog. For comprehensive information and data, please refer to the user documentation. The General Terms and Conditions of Use apply to Internet downloads.

Technical data

General data

Nominal voltage U_N	24 V DC
Max. current carrying capacity per branch	2.5 A
Number of positions	37

Width	112.5 mm
Height	77 mm
Depth	58.5 mm
Status display	LED
Ambient temperature (operation)	-20 °C ... 50 °C
Ambient temperature (storage/transport)	-20 °C ... 70 °C
Test voltage	500 V (50 Hz, 1 min.)
Mounting position	Any
Standards/regulations	IEC 60664 DIN EN 50178 IEC 62103
Pollution degree	2
Surge voltage category	II

Connection data

Connection 1	PCB connection
Connection in acc. with standard	IEC / EN
Type of connection	Screw connection
Conductor cross section solid min.	0.2 mm ²
Conductor cross section solid max.	4 mm ²
Conductor cross section stranded min.	0.2 mm ²
Conductor cross section stranded max.	2.5 mm ²
Conductor cross section AWG/kcmil min.	24
Conductor cross section AWG/kcmil max	12
Stripping length	8 mm
Screw thread	M3
Connection 2	D-SUB connection
Type of connection	Pluggable
Number of positions	37

Certificates / Approvals



Certification

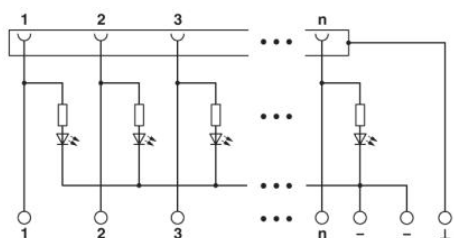
GOST

Accessories		
Item	Designation	Description
Cable/conductor		
2302434	CABLE D-SUB-S-S-S/.../.../...	Shielded round cable, assembled with two D-SUB male connectors, variable cable length
2302340	CABLE D-SUB-S/.../.../...	Shielded round cable, assembled with one D-SUB male and one female connector, variable cable length
2302191	CABLE-D37SUB/B/S/ 50/ KONFEK/S	Round shielded cable set, with 37-pos. D-SUB female and male connectors, cable length: 0.5 m
2302201	CABLE-D37SUB/B/S/100/ KONFEK/S	Round shielded cable set, with 37-pos. D-SUB female and male connectors, cable length: 1 m
2302214	CABLE-D37SUB/B/S/150/ KONFEK/S	Round shielded cable set, with 37-pos. D-SUB female and male connectors, cable length: 1.5 m
2302227	CABLE-D37SUB/B/S/200/ KONFEK/S	Round shielded cable set, with 37-pos. D-SUB female and male connectors, cable length: 2 m
2302230	CABLE-D37SUB/B/S/300/ KONFEK/S	Round shielded cable set, with 37-pos. D-SUB female and male connectors, cable length: 3 m
2302243	CABLE-D37SUB/B/S/400/ KONFEK/S	Round shielded cable set, with 37-pos. D-SUB female and male connectors, cable length: 4 m
2302256	CABLE-D37SUB/B/S/600/ KONFEK/S	Round shielded cable set, with 37-pos. D-SUB female and male connectors, cable length: 6 m
General		
2900912	CABLE-D-37SUB-M-OE-0,25- S/...	Shielded cable with a 37-pos. D-SUB pin strip and one open end. The individual wires are labeled 1 to 37 and fitted with ferrules. The braided shield is routed to a separate cable end. Cable length: variable.
2926577	CABLE-D-37SUB/M/OE/0,25/ S/0,5M	Shielded cable with a 37-pos. D-SUB pin strip and one open end. The individual wires are labeled 1 to 37 and fitted with ferrules. The braided shield is routed to a separate cable end. Cable length: 0.5 m.
2926580	CABLE-D-37SUB/M/OE/0,25/ S/1,0M	Shielded cable with a 37-pos. D-SUB pin strip and one open end. The individual wires are labeled 1 to 37 and fitted with ferrules. The braided shield is routed to a separate cable end. Cable length: 1 m.
2926593	CABLE-D-37SUB/M/OE/0,25/ S/1,5M	Shielded cable with a 37-pos. D-SUB pin strip and one open end. The individual wires are labeled 1 to 37 and fitted with ferrules. The braided shield is routed to a separate cable end. Cable length: 1.5 m.
2926603	CABLE-D-37SUB/M/OE/0,25/ S/2,0M	Shielded cable with a 37-pos. D-SUB pin strip and one open end. The individual wires are labeled 1 to 37 and fitted with ferrules. The braided shield is routed to a separate cable end. Cable length: 2 m.

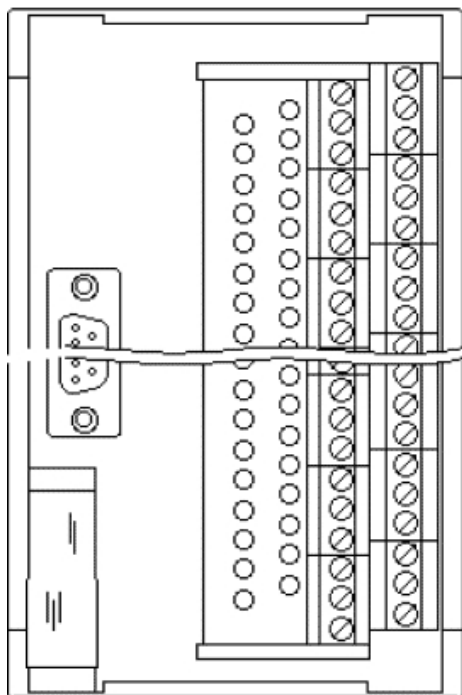
2926616	CABLE-D-37SUB/M/OE/0,25/S/3,0M	Shielded cable with a 37-pos. D-SUB pin strip and one open end. The individual wires are labeled 1 to 37 and fitted with ferrules. The braided shield is routed to a separate cable end. Cable length: 3 m.
2926629	CABLE-D-37SUB/M/OE/0,25/S/4,0M	Shielded cable with a 37-pos. D-SUB pin strip and one open end. The individual wires are labeled 1 to 37 and fitted with ferrules. The braided shield is routed to a separate cable end. Cable length: 4 m.
2926632	CABLE-D-37SUB/M/OE/0,25/S/6,0M	Shielded cable with a 37-pos. D-SUB pin strip and one open end. The individual wires are labeled 1 to 37 and fitted with ferrules. The braided shield is routed to a separate cable end. Cable length: 6 m.

Diagrams/Drawings

Circuit diagram



Schematic diagram



Address

PHOENIX CONTACT Deutschland GmbH
Flachmarktstr. 8
32825 Blomberg, Germany
Phone +49 5235 3 12000
Fax +49 5235 3 41200
<http://www.phoenixcontact.de>



© 2011 Phoenix Contact
Technical modifications reserved;