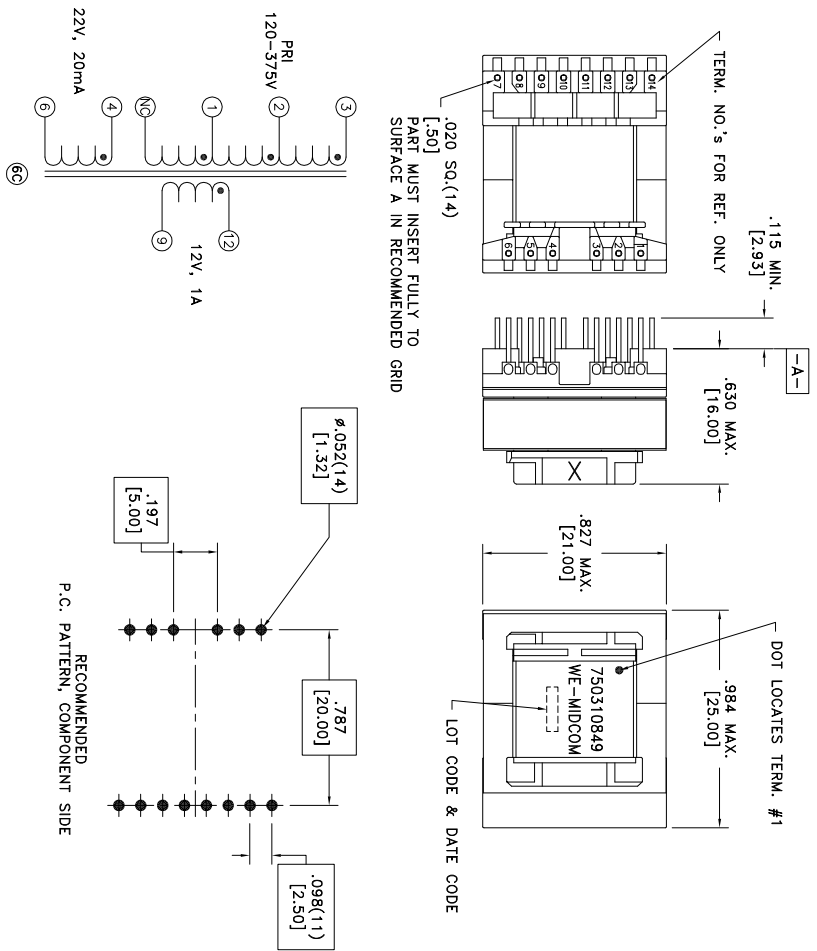


CUSTOMER TERMINAL	RoHS	LEAD(Pb)-FREE
Sn96%, Ag4%	Yes	Yes



ELECTRICAL SPECIFICATIONS @ 25°C unless otherwise noted:

PARAMETER	TEST CONDITIONS	VALUE
D.C. RESISTANCE	1-3 @20°C	0.62 ohms ±10%
D.C. RESISTANCE	4-6 @20°C	0.37 ohms ±10%
D.C. RESISTANCE	9-12 @20°C	0.021 ohms ±10%
INDUCTANCE	1-3 10kHz, 100mVAC, Is	900uH ±10%
SATURATION CURRENT	20% rolloff from initial	900mA
LEAKAGE INDUCTANCE	1-3 t _{le} (4+6, 9+12), 100kHz, 100mVAC, Is	12 0uH max.
DIELECTRIC RATING	3-12 t _{le} (1+4), 5000VAC, 1 second	4000VAC, 1 minute
TURNS RATIO	(2-1):(3-2)	1:1, ±1%
TURNS RATIO	(3-1):(4-6)	4:1, ±1%
TURNS RATIO	(3-1):(12-9)	8:1, ±1%



RECOMMENDED
P.C. PATTERN, COMPONENT SIDE

GENERAL SPECIFICATIONS:

- ⑥ Designed to comply with the following requirements as defined by IEC61558-2-17 and IEC60950-1:
- Reinforced insulation for a primary circuit at a working voltage of 400V.

REV.	DATE	Packaging Specifications	Tolerances unless otherwise specified:
6E	6/14	Method: Tray	Angles: ±1°
6D	3/12	PKG-0736	Fractions: ±1/64
6C	5/11	www.we-online.com/midcom	Decimals: ±.003
6B	11/10	SEE REVISION SHEET FOR REVISION LEVEL	Footprint: ±.001

DRAWING TITLE		PART NO.
TRANSFORMER		750310849
e1Sos p/n: 750310849		SPECIFICATION SHEET 1 OF 1

