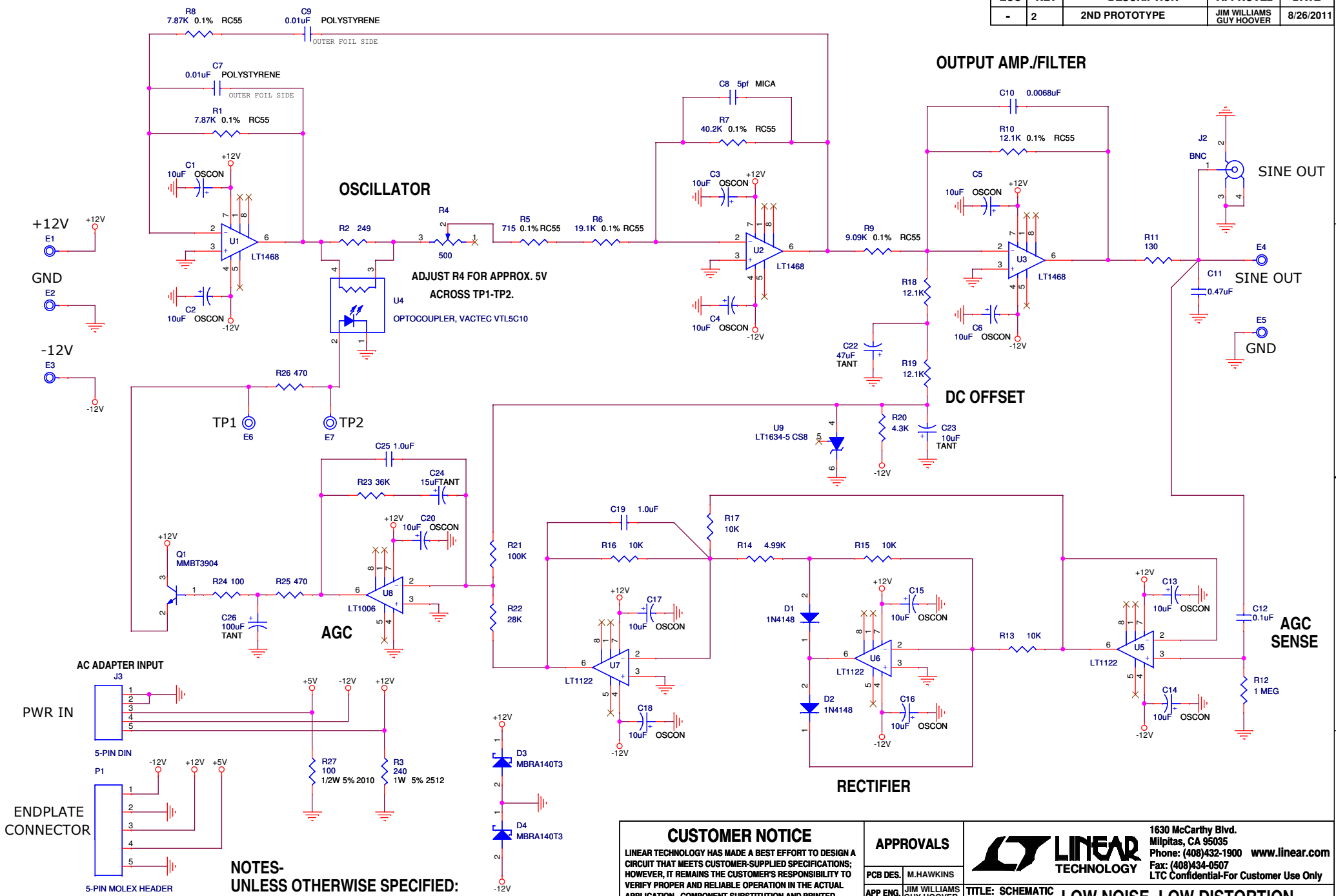


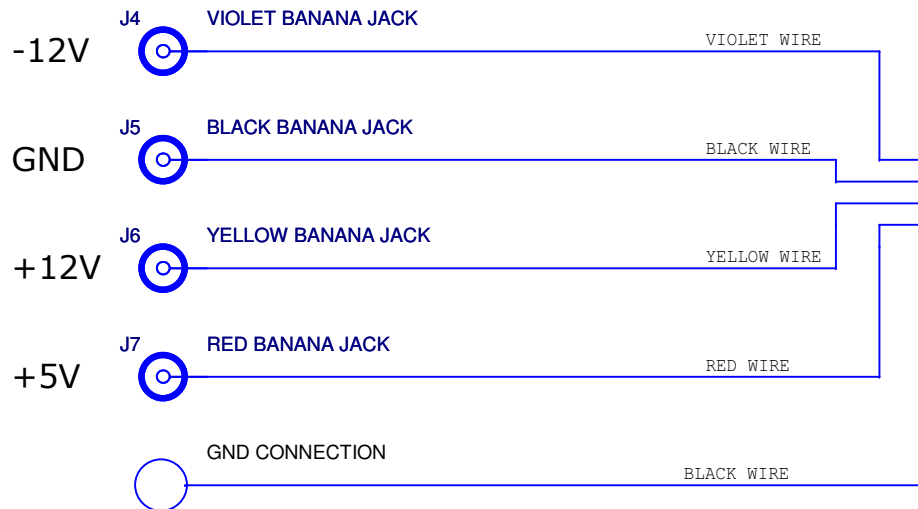
REVISION HISTORY				
ECO	REV	DESCRIPTION	APPROVED	DATE
-	2	2ND PROTOTYPE	JIM WILLIAMS GUY HOOVER	8/26/2011



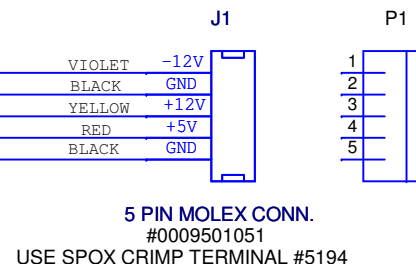
CUSTOMER NOTICE		APPROVALS			1630 McCarthy Blvd. Milpitas, CA 95035 Phone: (408)432-1900 www.linear.com Fax: (408)434-0507 LTC Confidential-For Customer Use Only		
LINEAR TECHNOLOGY HAS MADE A BEST EFFORT TO DESIGN A CIRCUIT THAT MEETS CUSTOMER-SUPPLIED SPECIFICATIONS; HOWEVER, IT REMAINS THE CUSTOMER'S RESPONSIBILITY TO VERIFY PROPER AND RELIABLE OPERATION IN THE ACTUAL APPLICATION. COMPONENT SUBSTITUTION AND PRINTED CIRCUIT BOARD LAYOUT MAY SIGNIFICANTLY AFFECT CIRCUIT PERFORMANCE OR RELIABILITY. CONTACT LINEAR TECHNOLOGY APPLICATIONS ENGINEERING FOR ASSISTANCE.		PCB DES.	M.HAWKINS		TITLE: SCHEMATIC	LOW NOISE, LOW DISTORTION SINEWAVE GENERATOR	
		APP ENG.	JIM WILLIAMS GUY HOOVER	SIZE	IC NO.		
				N/A	LT1468, LT1122, LT1006, LT1634	REV.	2
				SCALE = NONE	DATE: 08/26/2011	SHEET 1 OF 2	

J4-J7 BANANA JACKS ARE MOUNTED ON ENDPLATE-2

USE #24 AWG STRANDED WIRE
LENGTH AS REQUIRED

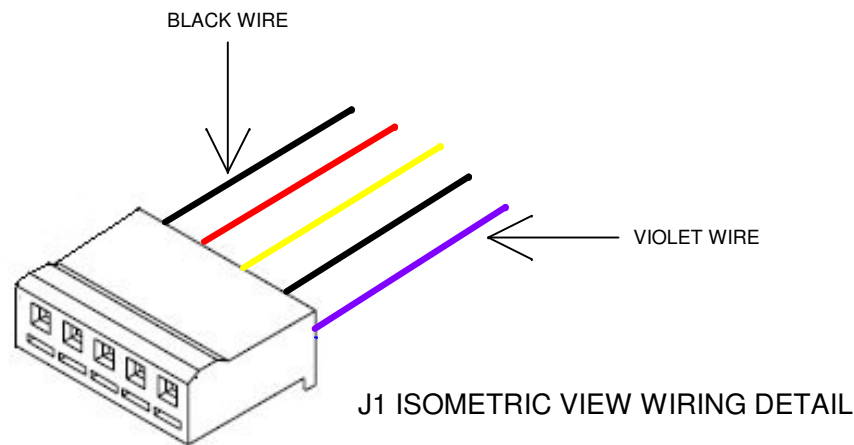


EXPOSED COPPER PAD
ON ENDPLATE-2
(CONNECTS TO ENDPLATE INTERNAL GND PLANE)



J1 PLUGS INTO
P1 ENDPLATE CONNECTOR
ON OSCILLATOR PCB

5 PIN MOLEX CONN.
#0009501051
USE SPOX CRIMP TERMINAL #5194



CABLE HARNESS WIRING DETAIL

J1 ISOMETRIC VIEW WIRING DETAIL

CUSTOMER NOTICE

LINEAR TECHNOLOGY HAS MADE A BEST EFFORT TO DESIGN A CIRCUIT THAT MEETS CUSTOMER-SUPPLIED SPECIFICATIONS; HOWEVER, IT REMAINS THE CUSTOMER'S RESPONSIBILITY TO VERIFY PROPER AND RELIABLE OPERATION IN THE ACTUAL APPLICATION. COMPONENT SUBSTITUTION AND PRINTED CIRCUIT BOARD LAYOUT MAY SIGNIFICANTLY AFFECT CIRCUIT PERFORMANCE OR RELIABILITY. CONTACT LINEAR TECHNOLOGY APPLICATIONS ENGINEERING FOR ASSISTANCE.

THIS CIRCUIT IS PROPRIETARY TO LINEAR TECHNOLOGY AND SUPPLIED FOR USE WITH LINEAR TECHNOLOGY PARTS.

APPROVALS

PCB DES.	M.HAWKINS
APP ENG.	JIM WILLIAMS GUY HOOVER

SCALE = NONE



1630 McCarthy Blvd.
Milpitas, CA 95035
Phone: (408)432-1900 www.linear.com
Fax: (408)434-0507
LTC Confidential-For Customer Use Only

TITLE: SCHEMATIC **LOW NOISE, LOW DISTORTION
SINEWAVE GENERATOR**

SIZE N/A	IC NO. LT1468, LT1122, LT1006, LT1634	REV. 2
-------------	--	-----------

DATE: 08/26/2011

SHEET 2 OF 2