

(1) HIT-W101C Appearance



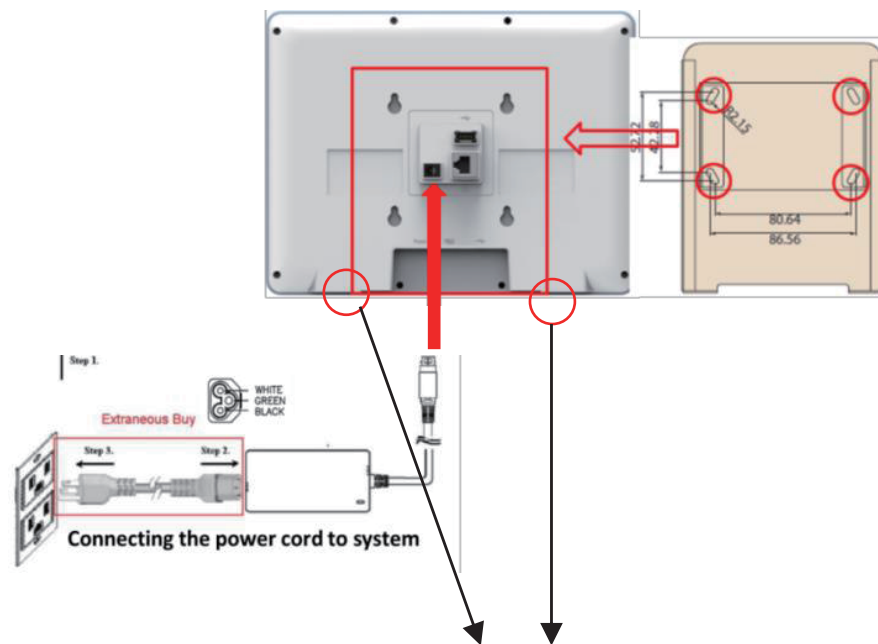
Front-view



Rear-view

* Please use the wall mount bracket only.

Follow below pic to match the mount and HIT-W101C, and use the screw to fix it from the bottom side

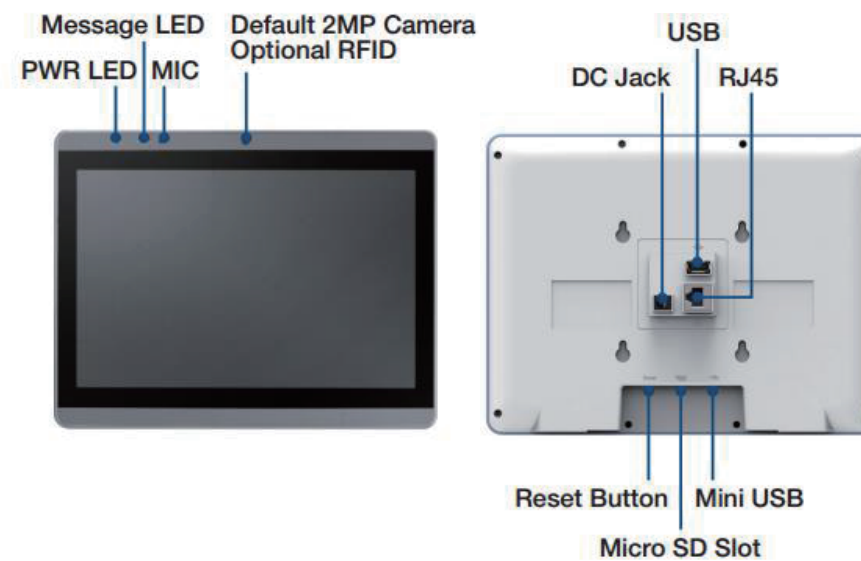


Screw Type: M2.5 x 8mm

(2) Packing List

- 1) HIT-W101C x1
- 2) Accessory box x1
 - This quick start manual x1
 - Wall Mount Bracket x1
 - Self-tapping screws x4
 - Screw M2.5 x2

(3) Front/Rear View



(4) Easy Setup

Power On Computer:

- 1) Make sure Equipotential Terminal is connected to equipotential ground in the hospital.
- 2) Connect the adapter to Power DC-IN. Please note that using different adaptors may put the system into risk.
- 3) When you plug in the DC power, the HIT will power on directly.
- 4) DC Input Voltage: The adapter only supply 12Vdc. Power Consumption: less than 36W

(5) Software Specifications

Please always check Advantech website for free downloading:

http://support.advantech.com/support/new_default.aspx

(6) Cleaning and Disinfecting

During normal use, the HIT (Healthcare Information Terminal) may become dirty and should be cleaned regularly.

- 1) Prepare a cleaning agent per manufacturer's instruction or hospital protocol.
- 2) Prepare a clean cloth that has been moistened in a cleaning solution.
- 3) Wipe the HIT thoroughly with a clean wipe.

Applicable Cleaning Agents List

No	Cleaning Agents
1	CHLOR-CLEAN (1.7g NaDCC)(1000 ppm available chlorine)
2	Alcohol, 95% concentration
3	AHP Accel TB
4	Glutaraldehyde [C ₅ H ₈ O ₂], 2% concentration
5	Isopropyl alcohol [(CH ₃) ₂ CHOH], 70% concentration
6	Sodium hypochlorite [NaOCl], 10% concentration

- * Do not immerse or rinse the HIT or its peripherals.
- * Do not spray cleaning agents on the chassis
- * Do not use disinfectants containing phenol

HIT-W101C Quick Start Manual

<p>ENGLISH</p> <ol style="list-style-type: none"> 1. Power LED 2. Message LED 3. MIC-in 4. Default 2MP Camera/ Optional RFID 5. DC Jack 6. USB 2.0 port 7. RJ45 8. Reset Button 9. Micro SD Slot 10. Mini USB <p>NOTE: *USB ports or other removable media drives may present a security risk.</p> <p>CAUTION: Before you set up and use the HIT, view the support documentation on our website – search by name, i.e., HIT-W101C. Cleaning instructions can also be found in the documentation.</p> <p>http://support.advantech.com.tw/support/new_default.aspx</p>	<p>DEUTSCH</p> <ol style="list-style-type: none"> 1. Power-LED 2. Benachrichtigungs-LED 3. Mikrofon-Eingang 4. Standard 2MP Kamera / Optional RFID 5. DC-Ladebuchse 6. USB 2.0 port 7. RJ45 8. Resetknopf 9. Micro SD Steckplatz 10. Mini USB <p>HINWEIS: *USB-Ports oder andere entfernbar Medienlaufwerke könnten ein Sicherheitsrisiko darstellen.</p> <p>ACHTUNG: Lesen Sie die Sicherheitsinformationen auf unserer Webseite, bevor Sie den HIT richten und benutzen – suchen Sie nach dem Produkt z.B.: HIT- W101C. In der Dokumentation stehen auch Hinweise zur Reinigung.</p> <p>http://support.advantech.com.tw/support/new_default.aspx</p>	<p>NEDERLANDS</p> <ol style="list-style-type: none"> 1. LED-indicator voor voeding 2. LED-indicator voor berichten 3. Mic in 4. Standaard 2MP Camera / Optionele RFID 5. DC Jack 6. USB 2.0 poort 7. RJ45 8. Reset knop 9. Micro SD-slot 10. Mini USB <p>OPMERKING: *USB poorten of andere verwijderbare mediaschijven kunnen een beveiligingsrisico met zich meebrengen.</p> <p>WAARSCHUWING: Neem eerst op onze website de begeleidende documentatie door voordat u de HIT instelt en gebruikt- zoek op naam, bijv HIT-W101C. Schoonmaak instructies zijn ook in de documentatie te vinden.</p> <p>http://support.advantech.com.tw/support/new_default.aspx</p>	<p>FRANCAISE</p> <ol style="list-style-type: none"> 1. Interrupteur (LED) d'alimentation 2. LED pour alertes 3. Entrée micro 4. Caméra 2MP par défaut et RFID optionnelle 5. DC Jack 6. Ports USB 2.0 7. RJ45 8. Bouton de réinitialisation 9. Slot Micro SD 10. Mini USB <p>NOTE : * les ports USB ou les autres média amovibles peuvent présenter des risques de sécurité.</p> <p>ATTENTION : avant d'installer et d'utiliser cet écran, veuillez consulter le manuel d'utilisation sur notre site internet – faites une recherche par nom, i.e., HIT-W101C. Les instructions de nettoyage et d'entretien se trouvent aussi dans le manuel d'utilisation.</p> <p>http://support.advantech.com.tw/support/new_default.aspx</p>	<p>ITALIANO</p> <ol style="list-style-type: none"> 1. Indicatore (LED) alimentazione 2. LED del messaggio 3. Ingresso microfono 4. Predefinito 2MP Camera / RFID opzionale 5. DC Jack 6. Porta USB 2.0 7. RJ45 8. Pulsante di reset 9. Slot Micro SD 10. Mini USB <p>NOTA:*Le porte USB o altri dispositivi removibili possono presentare rischi per la sicurezza</p> <p>ATTENZIONE: Prima di impostare e usare il HIT, vedere la documentazione di supporto sul nostro sito – cercare per nome, es: HIT-W101C, le istruzioni per la pulizia possono essere trovate nella documentazione.</p> <p>http://support.advantech.com.tw/support/new_default.aspx</p>	<p>ESPAÑOL</p> <ol style="list-style-type: none"> 1. Indicador LED de energía 2. LED para notificaciones 3. Entrada para micrófono 4. Cámara 2MP por defecto / RFID opcional 5. DC Jack 6. Puertos USB 2.0 7. RJ45 8. Botón de reinicio 9. Ranura micro SD 10. Mini USB <p>NOTA: *Los puertos USB u otros medios de almacenamiento removível pueden producir un riesgo de seguridad.</p> <p>PRECAUCIÓN: Antes de configurar y usar el HIT, lea detenidamente la documentación de soporte en nuestra página web – búsqueda por nombre, por ejemplo: HIT-W101C. Las instrucciones de limpieza también se pueden encontrar en la documentación.</p> <p>http://support.advantech.com.tw/support/new_default.aspx</p>	<p>PORTUGUÊS</p> <ol style="list-style-type: none"> 1. Interruptor de alimentação 2. LED Para notificações 3. Entrada de mic 4. Câmera padrão de 2MP / RFID opcional 5. DC Jack 6. Portas USB 2.0 7. RJ45 8. Botão de reset 9. Ranhura Micro SD 10. Mini USB <p>Nota: *Portas USB ou outras unidades de armazenamento removíveis podem apresentar um risco a segurança</p> <p>ATENÇÃO: Antes de configurar e utilizar o HIT, leia a documentação de suporte no nosso site – pesquise por nome, por exemplo, HIT-W101C. As instruções de Limpeza também poderão ser encontradas nesta documentação</p> <p>http://support.advantech.com.tw/support/new_default.aspx</p>	<p>SVENSKA</p> <ol style="list-style-type: none"> 1. Power LED-indikator 2. LED vid varningar 3. Mic-in 4. Standard 2MP kamera / valfri RFID 5. DC Jack 6. USB 2.0-port 7. RJ45 8. Återställningsknapp 9. Micro SD Slot 10. Mini USB <p>OBS: *USB-minnen eller andra flyttbara media enheter kan utgöra en säkerhetsrisk.</p> <p>VARNING: Innan du ställer in och använder HIT, läs igenom användare dokumentationen (Manual) på vår webbplats - sök på namn, dvs. HIT-W101C. Rengöringsanvisningar finns också i dokumentationen.</p> <p>http://support.advantech.com.tw/support/new_default.aspx</p>	<p>SUOMI</p> <ol style="list-style-type: none"> 1. Virran merkkivalo 2. Viesti LED 3. Mikrofonin sisääntulo 4. Oletuksena 2MP kamera / valinnainen RFID 5. DC jack 6. USB 2.0 Portti 7. RJ45 8. Nollaus painike 9. Micro SD -paikka 10. Mini USB <p>HUOMIO: *USB-portit tai muut poistettavat tiedontallentimet voivat aiheuttaa turvariskin.</p> <p>VAROITUS: Ennen kuin asennat ja käytät HIT:tä, katso käyttöohjeet nettisivuiltamme -etsi nimellä esim. HIT-W101C. Puhdistusohjeet löytyvät myös samasta tiedostosta.</p> <p>http://support.advantech.com.tw/support/new_default.aspx</p>	<p>NORSK</p> <ol style="list-style-type: none"> 1. LED-indikator for strøm 2. LED for varsler 3. Mik-in 4. Standard 2MP kamera / valgfri RFID 5. DC Jack 6. USB 2.0 port 7. RJ45 8. Nullstillknapp 9. Micro SD-spor 10. Mini USB <p>MERK: *USB-porter eller andre stasjoner med utskiftbare medier kan innebære en sikkerhetsrisiko.</p> <p>FORSIKTIG: Før du setter opp og bruker HIT, se støttedokumentasjonen på vår hjemmeside - søk etter navn, det vil si, HIT-W101C . Rengjøringsinstruksjonene kan også finnes i dokumentasjonen</p> <p>http://support.advantech.com.tw/support/new_default.aspx</p>	<p>DANSK</p> <ol style="list-style-type: none"> 1. Afbryder 2. Meddelelses LED 3. Mikrofonindgang 4. Standard 2MP kamera / valgfri RFID 5. DC Jack 6. USB 2.0-port 7. RJ45 8. Reset knap 9. Micro SD slot 10. Mini USB <p>BEMÆRK: *USB-porte eller andre udskiftelige mediedrev kan udgøre en sikkerhedsrisiko.</p> <p>ADVARSEL: Før du opsætter og bruger denne HIT, så læs supportdokumentationen på vores hjemmeside - søg efter navnet fx HIT-W101C . Instruktioer for rengøring kan også findes i samme dokumentation.</p> <p>http://support.advantech.com.tw/support/new_default.aspx</p>
--	--	---	---	---	--	---	--	---	--	---

General Views of the HIT-W101C

