

	20	19	18	17	16	15	14	13	12	11	10	9	8	7	6	5	4	3	2	1
	PART NO.	CKT SIZE	DIM 'A'	DIM 'B'	DIM 'C'	DIM 'D' REF	DIM 'E'													
M	75730-0104	4	13.78/1.543	12.00/1.472	3.06/1.20	7.06/2.78	1.60/0.62 TO 2.44/0.96													
	75730-0105	5	17.78/1.700	16.00/1.630																
	75730-0106	6	21.78/1.857	20.00/1.787																
	75730-0107	7	25.78/1.015	24.00/1.945																
L	75730-0108	8	29.78/1.172	28.00/1.102																
	75730-0109	9	33.78/1.330	32.00/1.260																
	75730-0110	10	37.78/1.487	36.00/1.417																
	75730-0111	11	41.78/1.645	40.00/1.575																
	75730-0112	12	45.78/1.802	44.00/1.732																
K	75730-0113	13	49.78/1.960	48.00/1.890																
	75730-0114	14	53.78/2.117	52.00/2.047																
	75730-0115	15	57.78/2.275	56.00/2.205																
	75730-0116	16	61.78/2.433	60.00/2.362																
	75730-0117	17	65.78/2.590	64.00/2.520																
J	75730-0118	18	69.78/2.747	68.00/2.677																
	75730-0119	19	73.78/2.905	72.00/2.835																
	75730-0120	20	77.78/3.062	76.00/2.992																
I	75730-0121	21	81.78/3.220	80.00/3.150																
	75730-0122	22	85.78/3.377	84.00/3.307																
	75730-0123	23	89.78/3.535	88.00/3.465																
	75730-0124	24	93.78/3.692	92.00/3.622																
	75730-0150	MIXED CL	83.78/3.298	82.00/3.228																
H	75730-0204	4	13.78/1.543	12.00/1.472	3.81/1.50	7.82/3.08	3.18/1.25													
	75730-0205	5	17.78/1.700	16.00/1.630																
	75730-0206	6	21.78/1.857	20.00/1.787																
	75730-0207	7	25.78/1.015	24.00/1.945																
G	75730-0208	8	29.78/1.172	28.00/1.102																
	75730-0209	9	33.78/1.330	32.00/1.260																
	75730-0210	10	37.78/1.487	36.00/1.417																
	75730-0211	11	41.78/1.645	40.00/1.575																
	75730-0212	12	45.78/1.802	44.00/1.732																
F	75730-0213	13	49.78/1.960	48.00/1.890																
	75730-0214	14	53.78/2.117	52.00/2.047																
	75730-0215	15	57.78/2.275	56.00/2.205																
	75730-0216	16	61.78/2.433	60.00/2.362																
	75730-0217	17	65.78/2.590	64.00/2.520																
E	75730-0218	18	69.78/2.747	68.00/2.677																
	75730-0219	19	73.78/2.905	72.00/2.835																
	75730-0220	20	77.78/3.062	76.00/2.992																
	75730-0221	21	81.78/3.220	80.00/3.150																
	75730-0222	22	85.78/3.377	84.00/3.307																
D	75730-0223	23	89.78/3.535	88.00/3.465																
	75730-0224	24	93.78/3.692	92.00/3.622																
	75730-0250	MIXED CL	83.78/3.298	82.00/3.228																
	75730-0251	MIXED CL	83.78/3.298	82.00/3.228																

NOTES:

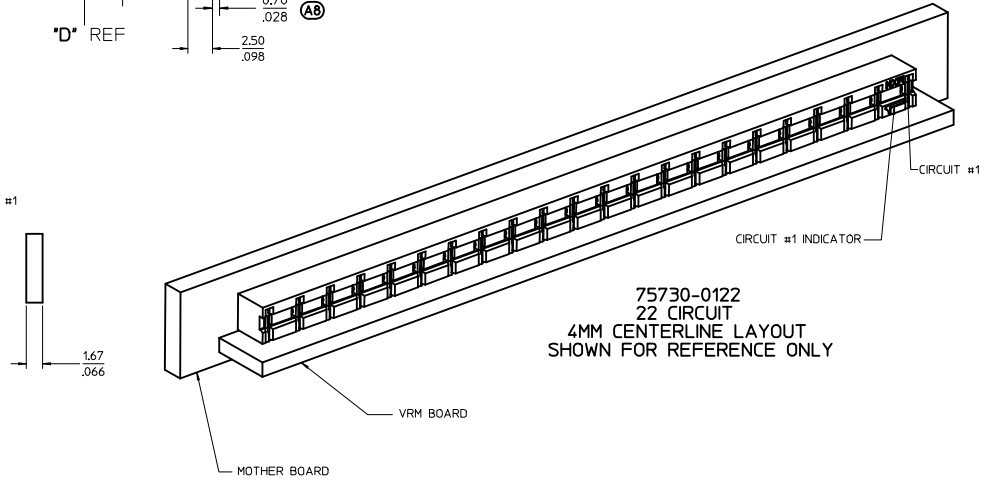
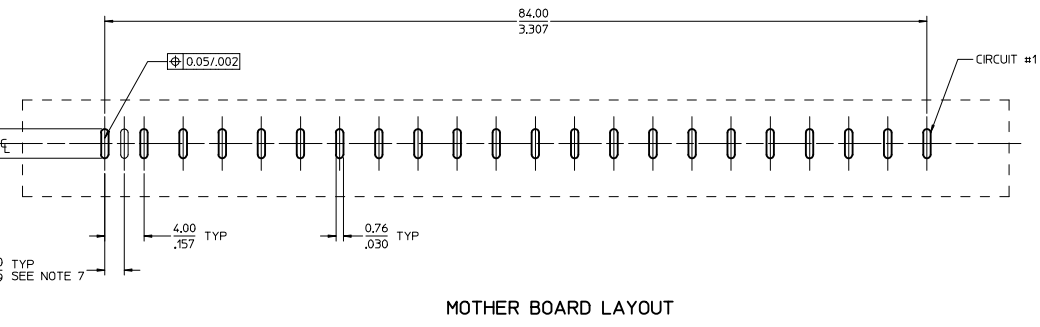
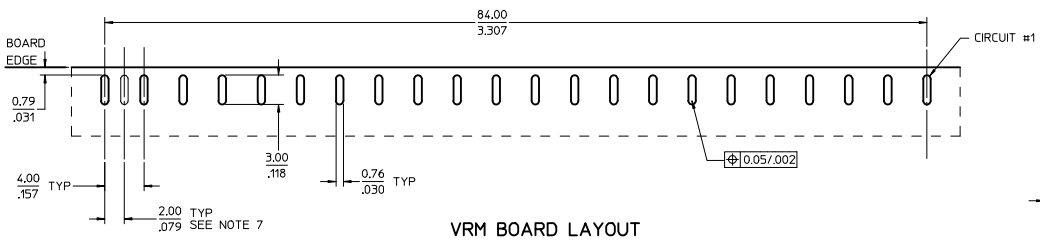
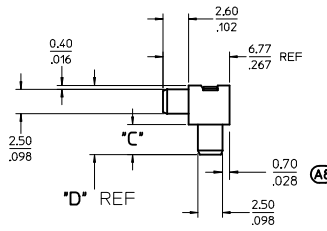
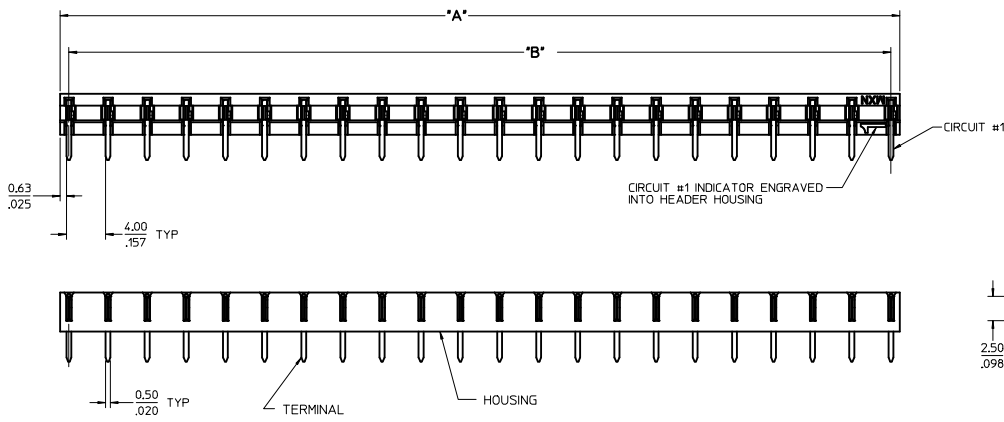
- MATERIALS:
  - HOUSING: LCP, 30% GLASS FILLED, 94V-0, COLOR: BLACK
  - TERMINAL: COPPER ALLOY
- PLATING:
  - 2.50  $\mu$ m/100  $\mu$ m MIN TIN OVER
  - 1.25  $\mu$ m/50  $\mu$ m MIN NICKEL OVERALL
- PRODUCT SPEC: PS-75730
- MODULE IS DESIGNED FOR SOLDERING TO THE PCB
- MODULE IS RoHS COMPLIANT
- BOW, FLATNESS AND CAMBER SPECIFICATIONS ARE 0.25/0.10 PER INCH
- PARTS TO BE PACKAGED PER MOLEX PACKAGING SPEC PK-75730-118

(A9)

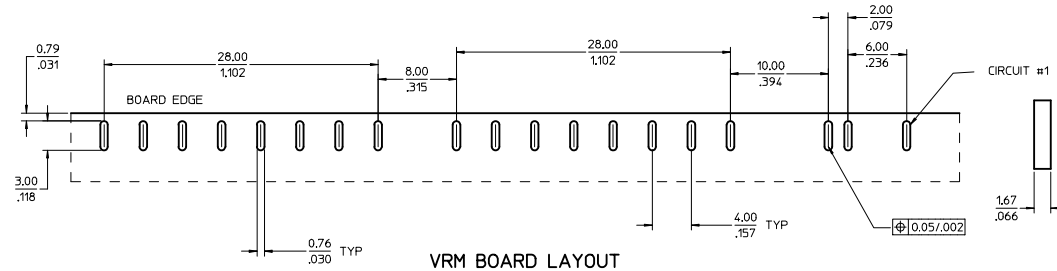
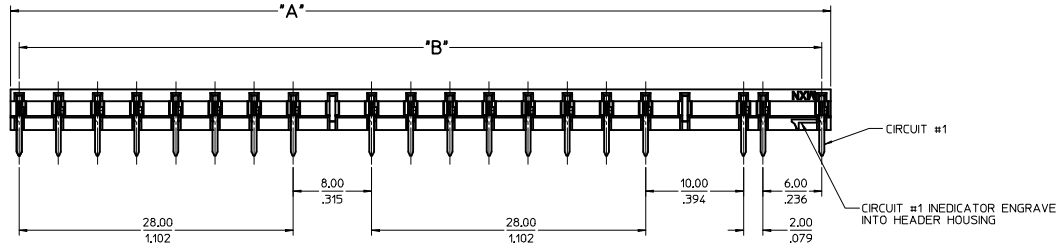
(A9)

(A9)

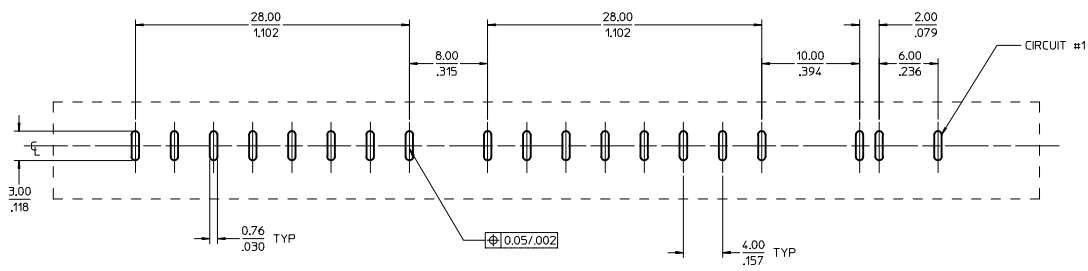
REMOVE -0147 IEC NO: UCP2012-2242 DRAWN: BANOURA 2012/01/17 CHKD: APPR: APATEL REV:	QUALITY SYMBOLS	GENERAL TOLERANCES (UNLESS SPECIFIED)	DIMENSION STYLE	SCALE	DESIGN UNITS	THIRD ANGLE PROJECTION
	▽=0	4 PLACES ±.005 ±.005	MM/IN	1:1	METRIC	ASSEMBLY VRM HEADER FOR BOARD TO BOARD
	▽=0	3 PLACES ±.013 ±.010				MOLEX INCORPORATED
	▽=0	2 PLACES ±0.25 ±.005				SD-75730-118
		ANGULAR ±1/2°				
		DRAFT WHERE APPLICABLE MUST REMAIN WITHIN DIMENSIONS	SEE CHART			



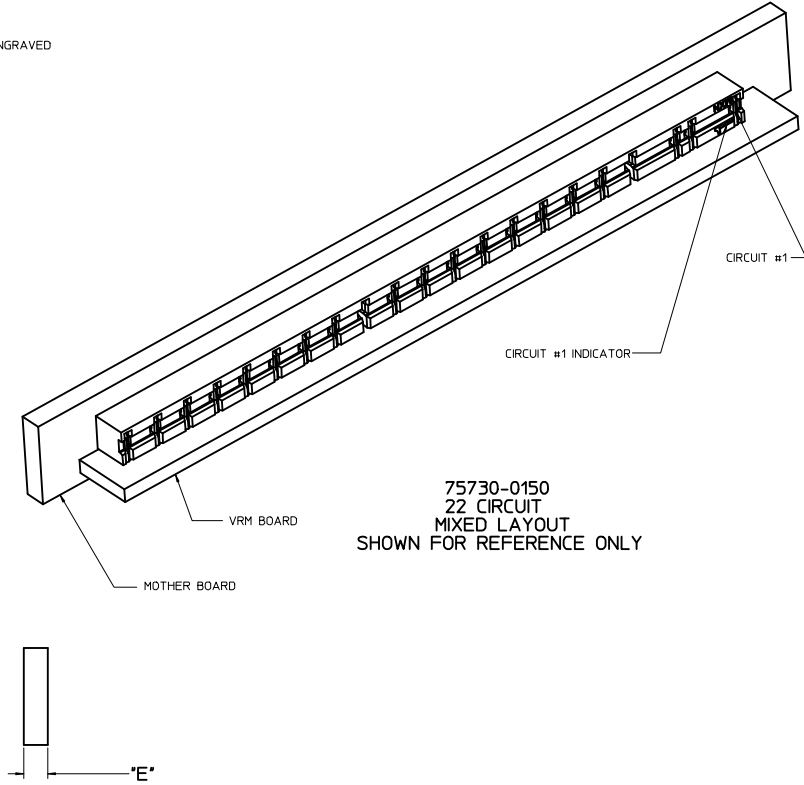
SEE SHEET 1 IEC NO: UCP2012-2242 DRAWN BY: DR. BHANU CHKD: CHYD APPR: APATEL DATE: 2012/01/17 2013/12/19	QUALITY SYMBOLS	GENERAL TOLERANCES (UNLESS SPECIFIED)	DIMENSION STYLE	SCALE	DESIGN UNITS	THIRD ANGLE PROJECTION
	▽=0	mm INCH	MM/IN	4:1	METRIC	☉
	▽=0	4 PLACES ±.005	DRAWN BY	DATE	TITLE	
	▽=0	3 PLACES ±.010	ADRNATNOL	2005/05/03	ASSEMBLY VRM HEADER FOR BOARD TO BOARD	
▽=0	2 PLACES ±0.13	CHECKED BY	DATE	MOLEX INCORPORATED		SHEET NO. 2 OF 4
▽=0	1 PLACE ±0.25	APATEL	2005/05/03	MATERIAL NO. SD-75730-118		
	ANGULAR ±1/2°	APPROVED BY	DATE	DOCUMENT NO.		
	DRAFT WHERE APPLICABLE MUST REMAIN WITHIN DIMENSIONS	APATEL	2005/05/03	SD-75730-118		
		SEE CHART		THIS DRAWING CONTAINS INFORMATION THAT IS PROPRIETARY TO MOLEX INCORPORATED AND SHOULD NOT BE USED WITHOUT WRITTEN PERMISSION		



VRM BOARD LAYOUT



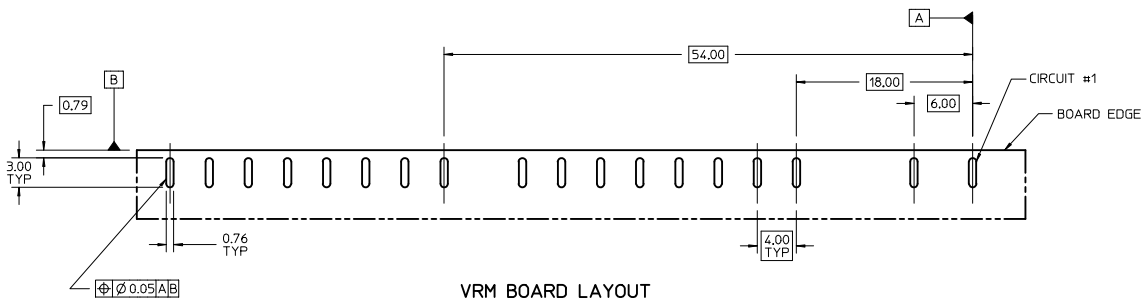
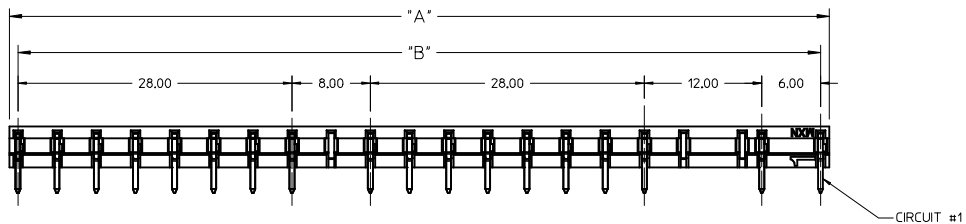
MOTHER BOARD LAYOUT



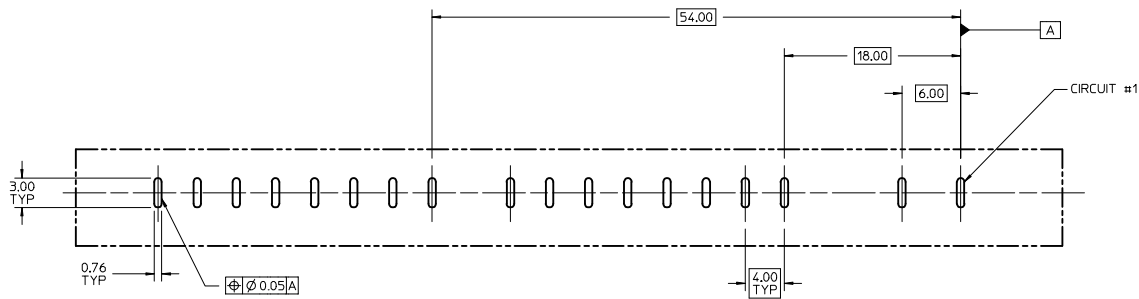
75730-0150  
22 CIRCUIT  
MIXED LAYOUT  
SHOWN FOR REFERENCE ONLY

SEE SHEET 1 IEC NO. UCF2012-2242 DRAWN BY: DRW:RABANDIRA CHKD: A9 APPR: APATEL DATE: 2012/01/17 REV: 2013/12/19	QUALITY SYMBOLS	GENERAL TOLERANCES (UNLESS SPECIFIED)	DIMENSION STYLE	SCALE	DESIGN UNITS	THIRD ANGLE PROJECTION	
	$\nabla=0$	mm INCH	MM/IN	4:1	METRIC		
	$\nabla=0$	4 PLACES ± --- ± --- 3 PLACES ± --- ± .005 2 PLACES ± 0.13 ± .010 1 PLACE ± 0.25 ± ---	DRAWN BY: ADRA TNOL CHECKED BY: DATE APATEL 2005/05/03 APATEL 2005/05/03	TITLE	ASSEMBLY VRM HEADER FOR BOARD TO BOARD		
	$\nabla=0$	DRAFT WHERE APPLICABLE MUST REMAIN WITHIN DIMENSIONS	APPROVED BY: DATE APATEL 2005/05/03	MATERIAL NO. SEE CHART	DOCUMENT NO. SD-75730-118	MOLEX INCORPORATED	
			SIZE D	THIS DRAWING CONTAINS INFORMATION THAT IS PROPRIETARY TO MOLEX INCORPORATED AND SHOULD NOT BE USED WITHOUT WRITTEN PERMISSION			

20 19 18 17 16 15 14 13 12 11 10 9 8 7 6 5 4 3 2 1



VRM BOARD LAYOUT



MOTHER BOARD LAYOUT

75730-0251 SHOWN  
18 CIRCUIT  
MIXED LAYOUT

SEE SHEET 1 IEC NO: UCF2012-2242 DRAWN: BHANDURA 2012/01/17 CHKD: APPR: APATEL 2013/12/19 REV DESCRIPTION	QUALITY SYMBOLS ▽=0 ▽=0 ▽=0		GENERAL TOLERANCES (UNLESS SPECIFIED) mm INCH 4 PLACES ±.005 ±.005 3 PLACES ±.010 ±.010 2 PLACES ±.025 ±.025 1 PLACE ±.050 ±.050 ANGULAR ±1/2°		DIMENSION STYLE MM/IN SCALE 4:1 DESIGN UNITS METRIC THIRD ANGLE PROJECTION	
	DRAWN BY ADRA TNOL 2005/05/03 DATE		CHECKED BY APATEL 2005/05/03 DATE		APPROVED BY APATEL 2005/05/03 DATE	
	MATERIAL NO. SEE CHART		DOCUMENT NO. SD-75730-118		SHEET NO. 4 OF 4	
	DRAFT WHERE APPLICABLE MUST REMAIN WITHIN DIMENSIONS THIS DRAWING CONTAINS INFORMATION THAT IS PROPRIETARY TO MOLEX INCORPORATED AND SHOULD NOT BE USED WITHOUT WRITTEN PERMISSION					

19 18 17 16 15 14 13 12 11 10 9 8 7 6 5 4 3 2 1

	20	19	18	17	16	15	14	13	12	11	10	9	8	7	6	5	4	3	2	1			
	PART NO.	CKT SIZE	DIM 'A'	DIM 'B'	DIM 'C'	DIM 'D' REF	DIM 'E'																
M	75730-0104	4	13.78/1.543	12.00/1.472	3.06/1.20	7.06/2.78	1.60/0.62 TO 2.44/0.96																
	75730-0105	5	17.78/1.700	16.00/1.630																			
	75730-0106	6	21.78/1.857	20.00/1.787																			
	75730-0107	7	25.78/1.015	24.00/1.945																			
	75730-0108	8	29.78/1.172	28.00/1.102																			
L	75730-0109	9	33.78/1.330	32.00/1.260																			
	75730-0110	10	37.78/1.487	36.00/1.417																			
	75730-0111	11	41.78/1.645	40.00/1.575																			
	75730-0112	12	45.78/1.802	44.00/1.732																			
K	75730-0113	13	49.78/1.960	48.00/1.890																			
	75730-0114	14	53.78/2.117	52.00/2.047																			
	75730-0115	15	57.78/2.275	56.00/2.205																			
	75730-0116	16	61.78/2.433	60.00/2.362																			
	75730-0117	17	65.78/2.590	64.00/2.520																			
J	75730-0118	18	69.78/2.747	68.00/2.677																			
	75730-0119	19	73.78/2.905	72.00/2.835																			
	75730-0120	20	77.78/3.062	76.00/2.992																			
	75730-0121	21	81.78/3.220	80.00/3.150																			
	75730-0122	22	85.78/3.377	84.00/3.307																			
I	75730-0123	23	89.78/3.535	88.00/3.465																			
	75730-0124	24	93.78/3.692	92.00/3.622																			
	75730-0150	MIXED CL	83.78/3.298	82.00/3.228																			
H	75730-0204	4	13.78/1.543	12.00/1.472	3.81/1.50	7.82/3.08	3.18/1.25																
	75730-0205	5	17.78/1.700	16.00/1.630																			
	75730-0206	6	21.78/1.857	20.00/1.787																			
	75730-0207	7	25.78/1.015	24.00/1.945																			
	75730-0208	8	29.78/1.172	28.00/1.102																			
G	75730-0209	9	33.78/1.330	32.00/1.260																			
	75730-0210	10	37.78/1.487	36.00/1.417																			
	75730-0211	11	41.78/1.645	40.00/1.575																			
	75730-0212	12	45.78/1.802	44.00/1.732																			
F	75730-0213	13	49.78/1.960	48.00/1.890																			
	75730-0214	14	53.78/2.117	52.00/2.047																			
	75730-0215	15	57.78/2.275	56.00/2.205																			
	75730-0216	16	61.78/2.433	60.00/2.362																			
	75730-0217	17	65.78/2.590	64.00/2.520																			
E	75730-0218	18	69.78/2.747	68.00/2.677																			
	75730-0219	19	73.78/2.905	72.00/2.835																			
	75730-0220	20	77.78/3.062	76.00/2.992																			
	75730-0221	21	81.78/3.220	80.00/3.150																			
	75730-0222	22	85.78/3.377	84.00/3.307																			
D	75730-0223	23	89.78/3.535	88.00/3.465																			
	75730-0224	24	93.78/3.692	92.00/3.622																			
	75730-0250	MIXED CL	83.78/3.298	82.00/3.228																			
	75730-0251	MIXED CL	83.78/3.298	82.00/3.228																			

NOTES:

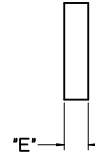
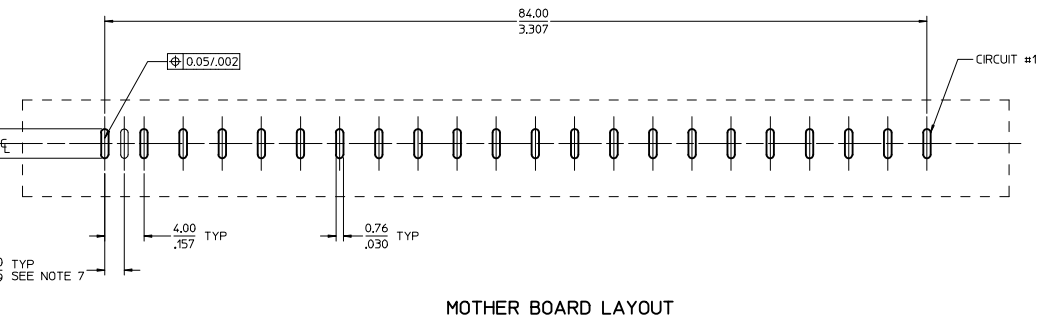
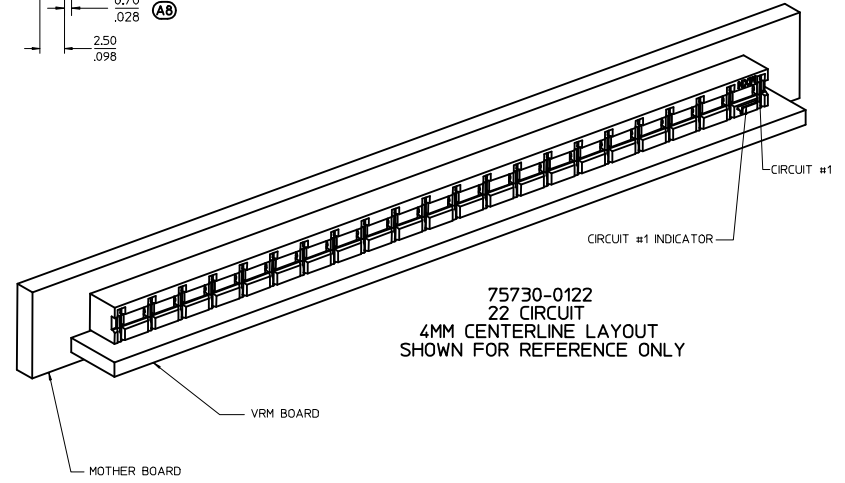
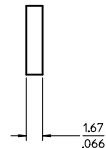
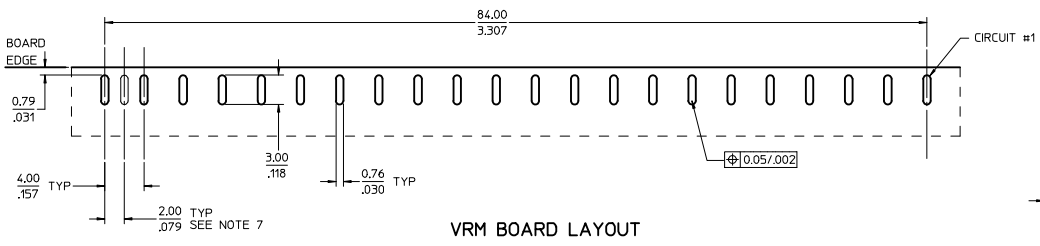
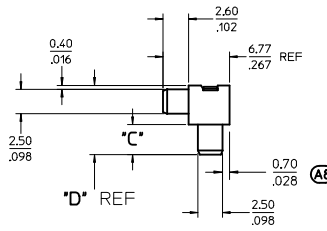
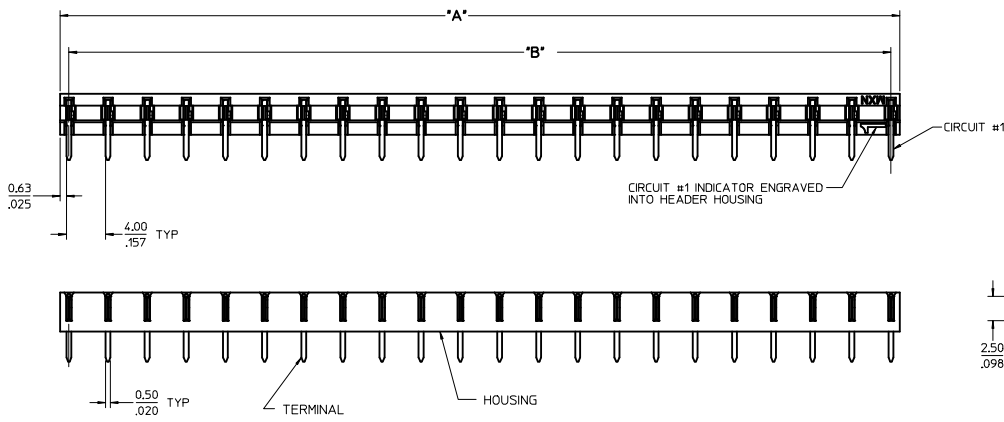
- MATERIALS:
  - HOUSING: LCP, 30% GLASS FILLED, 94V-0, COLOR: BLACK
  - TERMINAL: COPPER ALLOY
- PLATING:
  - 2.50  $\mu$ m/100  $\mu$ m MIN TIN OVER
  - 1.25  $\mu$ m/50  $\mu$ m MIN NICKEL OVERALL
- PRODUCT SPEC: PS-75730
- MODULE IS DESIGNED FOR SOLDERING TO THE PCB
- MODULE IS RoHS COMPLIANT
- BOW, FLATNESS AND CAMBER SPECIFICATIONS ARE 0.25/0.10 PER INCH
- PARTS TO BE PACKAGED PER MOLEX PACKAGING SPEC PK-75730-118

(A9)

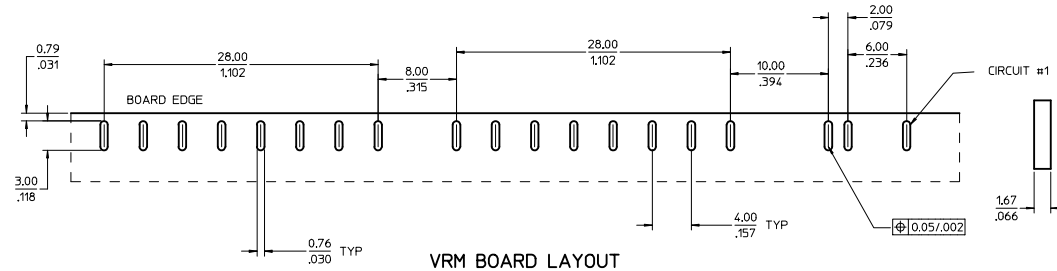
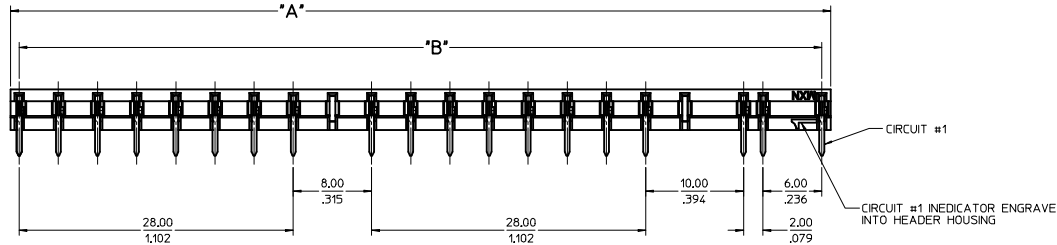
(A9)

(A9)

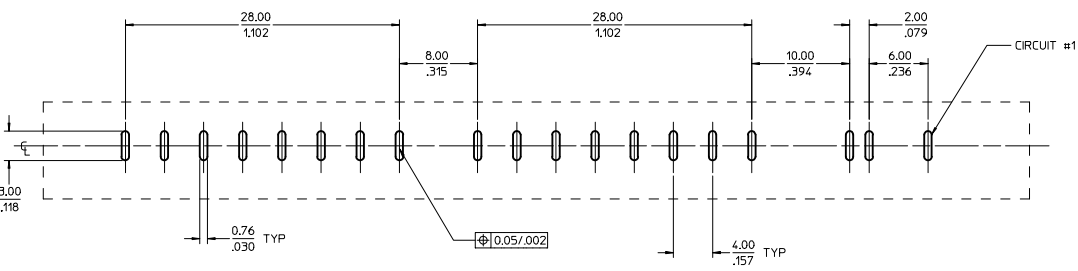
REMOVE -0147 IEC NO: UCP2012-2242 DRAWN: BANDURA 2012/01/17 CHKD: APPR: APATEL REV:	QUALITY SYMBOLS	GENERAL TOLERANCES (UNLESS SPECIFIED)	DIMENSION STYLE	SCALE	DESIGN UNITS	THIRD ANGLE PROJECTION
	▽=0	4 PLACES ±.005 ±.005	MM/IN	1:1	METRIC	
	▽=0	3 PLACES ±.013 ±.010				
	▽=0	2 PLACES ±.025 ±.025				
		ANGULAR ±1/2°				
		DRAFT WHERE APPLICABLE MUST REMAIN WITHIN DIMENSIONS	SEE CHART			
			DRAWN BY DATE	CHECKED BY DATE	APPROVED BY DATE	
			ADRNATNOL 2005/05/03	APATEL 2005/05/03	APATEL 2005/05/03	
			MOLEX INCORPORATED MATERIAL NO. SD-75730-118 DOCUMENT NO.			SHEET NO. 1 OF 4
			THIS DRAWING CONTAINS INFORMATION THAT IS PROPRIETARY TO MOLEX INCORPORATED AND SHOULD NOT BE USED WITHOUT WRITTEN PERMISSION			



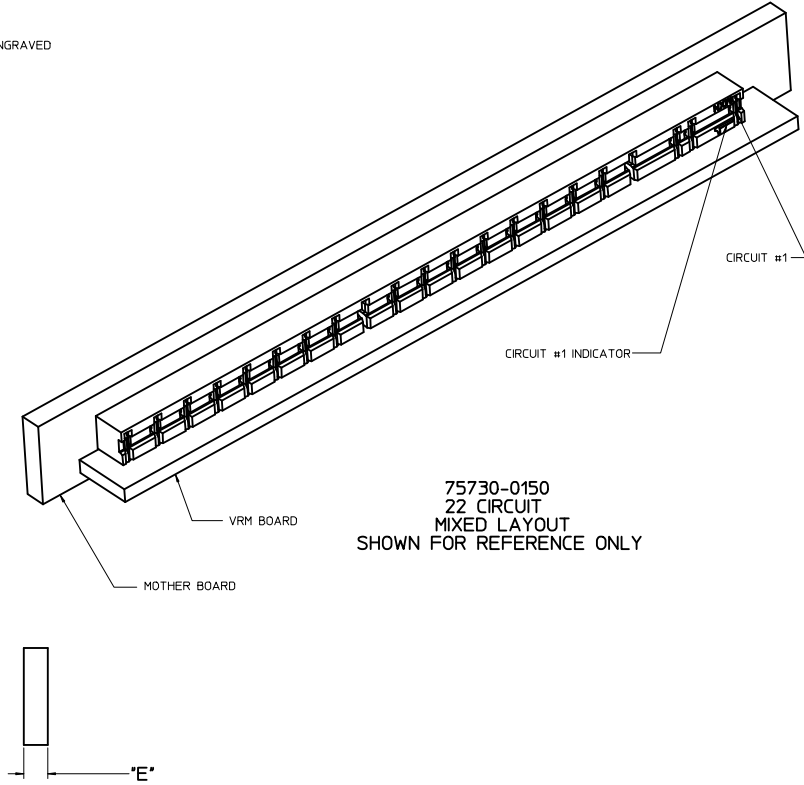
SEE SHEET 1 IEC NO: UCF2012-2242 DRAWN BY: DRW:RABANDURA CHKD: CHYD: APPR: APATEL DATE: 2012/01/17 2013/12/19	QUALITY SYMBOLS	GENERAL TOLERANCES (UNLESS SPECIFIED)	DIMENSION STYLE	SCALE	DESIGN UNITS	THIRD ANGLE PROJECTION	
	$\nabla=0$	mm INCH	MM/IN	4:1	METRIC		
	$\nabla=0$	4 PLACES ± --- ± --- 3 PLACES ± --- ± .005 2 PLACES ± 0.13 ± .010 1 PLACE ± 0.25 ± ---	DRAWN BY: ADRA1NOL CHECKED BY: DATE APATEL 2005/05/03 APATEL 2005/05/03	DATE	DATE	DATE	TITLE
	$\nabla=0$	ANGULAR ±1/2°	APATEL 2005/05/03	DATE	DATE	DATE	ASSEMBLY VRM HEADER FOR BOARD TO BOARD
	DRAFT WHERE APPLICABLE MUST REMAIN WITHIN DIMENSIONS	MATERIAL NO. SEE CHART	DOCUMENT NO. SD-75730-118		MOLEX INCORPORATED		
		SIZE D	THIS DRAWING CONTAINS INFORMATION THAT IS PROPRIETARY TO MOLEX INCORPORATED AND SHOULD NOT BE USED WITHOUT WRITTEN PERMISSION		SHEET NO. 2 OF 4		



VRM BOARD LAYOUT



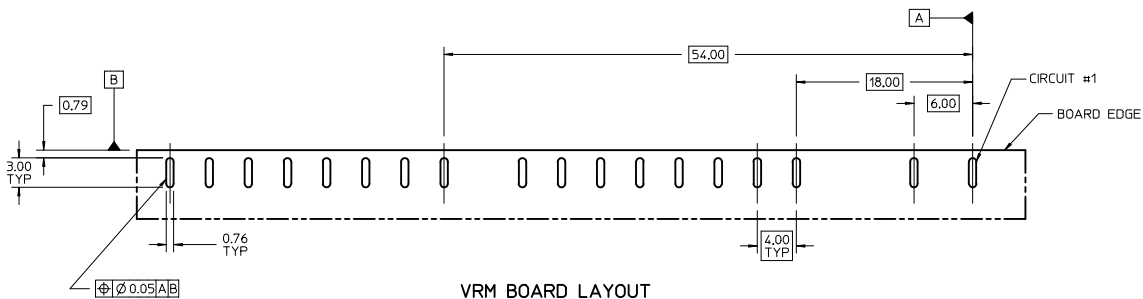
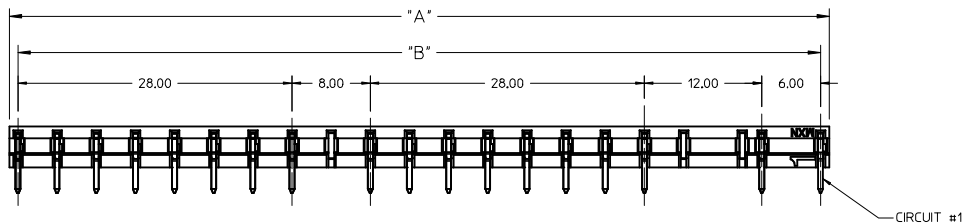
MOTHER BOARD LAYOUT



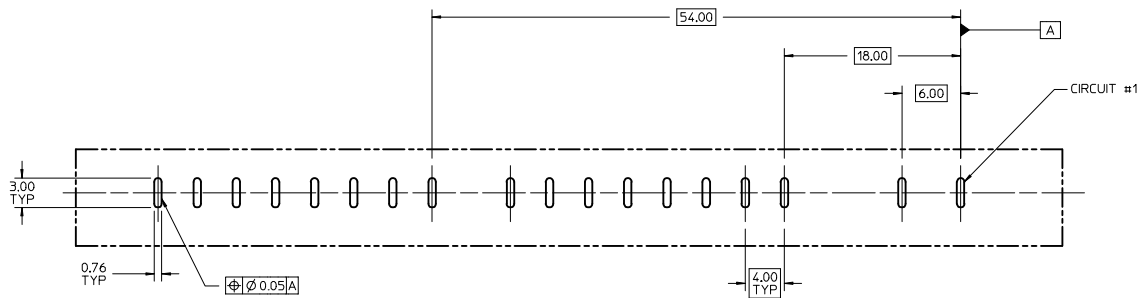
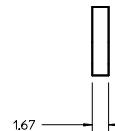
75730-0150  
22 CIRCUIT  
MIXED LAYOUT  
SHOWN FOR REFERENCE ONLY

SEE SHEET 1 IEC NO. UCP2012-2242 DRAWN BY: DR. BHANUBAIRA CHKD: A9 APPR: APATEL DATE: 2012/01/17 REV: 2013/12/19	QUALITY SYMBOLS	GENERAL TOLERANCES (UNLESS SPECIFIED)	DIMENSION STYLE	SCALE	DESIGN UNITS	THIRD ANGLE PROJECTION	
	$\nabla=0$	mm INCH	MM/IN	4:1	METRIC		
	$\nabla=0$	4 PLACES ± --- ± --- 3 PLACES ± --- ± .005 2 PLACES ± 0.13 ± .010 1 PLACE ± 0.25 ± ---	DRAWN BY: ADRA TNOL CHECKED BY: DATE APATEL 2005/05/03 APATEL 2005/05/03	TITLE	ASSEMBLY VRM HEADER FOR BOARD TO BOARD		
	$\nabla=0$	DRAFT WHERE APPLICABLE MUST REMAIN WITHIN DIMENSIONS	APPROVED BY: DATE APATEL 2005/05/03	MATERIAL NO. SEE CHART	DOCUMENT NO. SD-75730-118	MOLEX INCORPORATED	
		SIZE D		SHEET NO. 3 OF 4			
THIS DRAWING CONTAINS INFORMATION THAT IS PROPRIETARY TO MOLEX INCORPORATED AND SHOULD NOT BE USED WITHOUT WRITTEN PERMISSION							

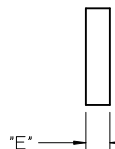
20 19 18 17 16 15 14 13 12 11 10 9 8 7 6 5 4 3 2 1



VRM BOARD LAYOUT



MOTHER BOARD LAYOUT



75730-0251 SHOWN  
18 CIRCUIT  
MIXED LAYOUT

SEE SHEET 1 IEC NO: UCP2012-2242 DRAWN: BANAJIRA 2012/01/17 CHKD: APPR: APATEL 2013/12/19 REV DESCRIPTION	QUALITY SYMBOLS ▽=0 ▽=0 ▽=0		GENERAL TOLERANCES (UNLESS SPECIFIED) mm INCH 4 PLACES ±.005 ±.005 3 PLACES ±.010 ±.010 2 PLACES ±.025 ±.025 1 PLACE ±.050 ±.050 ANGULAR ±1/2°		DIMENSION STYLE MM/IN SCALE 4:1 DESIGN UNITS METRIC THIRD ANGLE PROJECTION	
	DRAWN BY ADRA TNOL 2005/05/03 DATE		CHECKED BY APATEL 2005/05/03 DATE		APPROVED BY APATEL 2005/05/03 DATE	
	MATERIAL NO. SEE CHART		DOCUMENT NO. SD-75730-118		MOLEX INCORPORATED SHEET NO. 4 OF 4	
	DRAFT WHERE APPLICABLE MUST REMAIN WITHIN DIMENSIONS THIS DRAWING CONTAINS INFORMATION THAT IS PROPRIETARY TO MOLEX INCORPORATED AND SHOULD NOT BE USED WITHOUT WRITTEN PERMISSION					

19 18 17 16 15 14 13 12 11 10 9 8 7 6 5 4 3 2 1