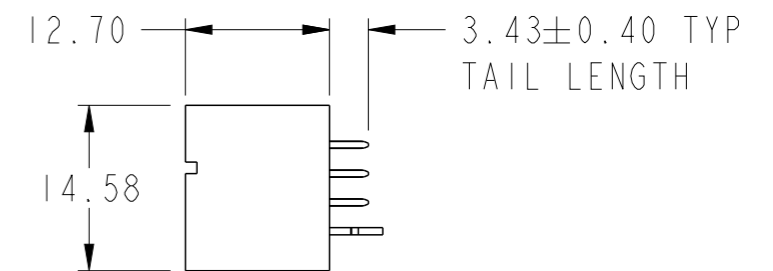
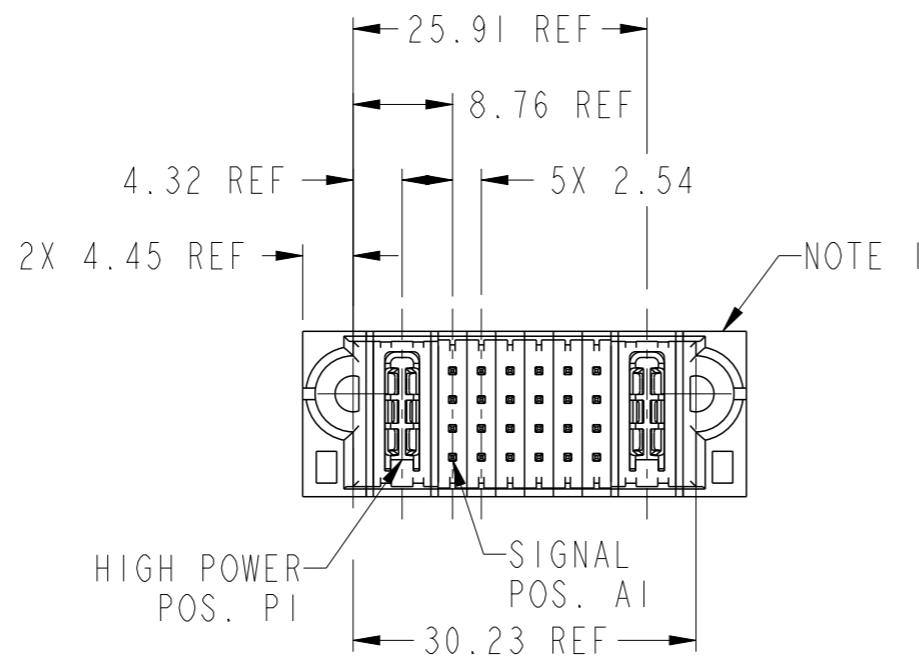
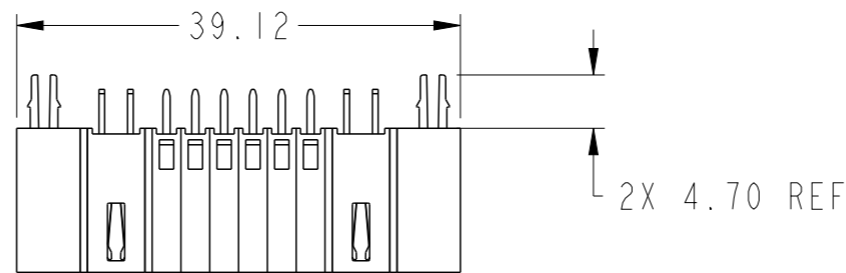
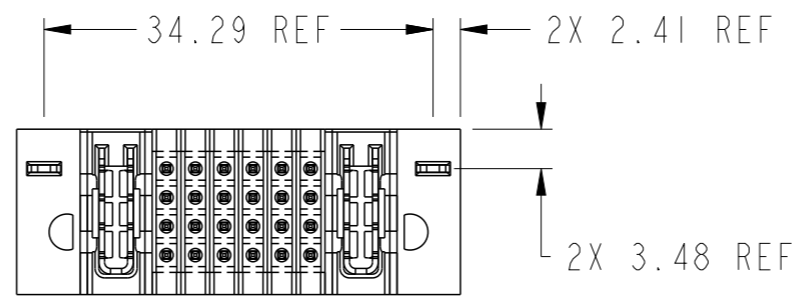


PART NUMBER SEE SHEET 2



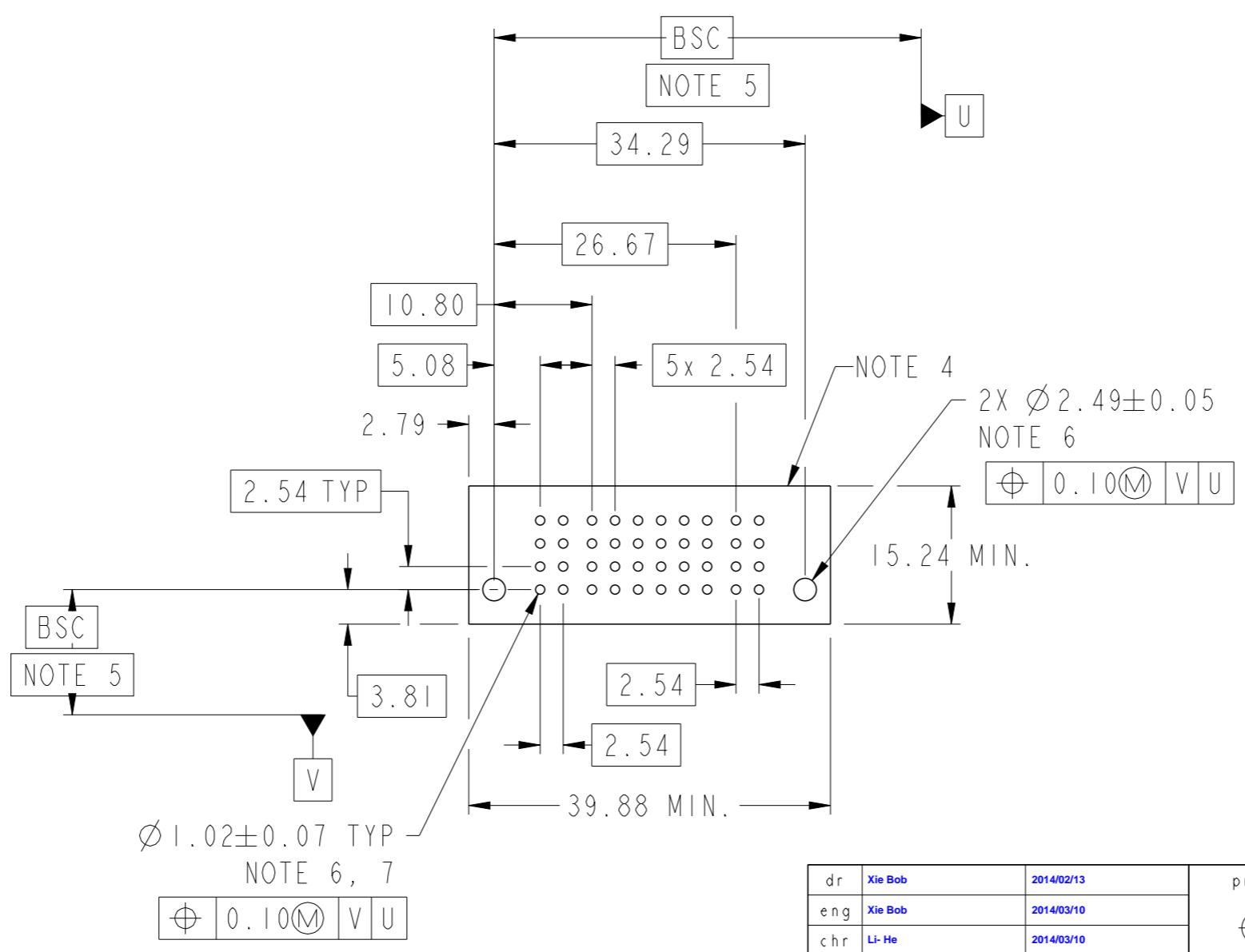
spec ref	*	dr	Xie Bob	2014/02/13	projection	MM	size	A3	scale	3:2
tolerance std	ASME Y14.5	eng	Xie Bob	2014/03/10			ecn no	-	rel level	Released
TOLERANCES UNLESS OTHERWISE SPECIFIED		chr	Li-He	2014/03/10						
surface	<input checked="" type="checkbox"/> linear <input type="checkbox"/> angular	0.X ±0.5 0.XX ±0.25 0.XXX ±0.10			IP+ 24S+IP VERTICAL STB HEADER		dwg no 10106266-2LUB201	rev A	www.fci.com cat. no. Product - Customer Drw sheet 1 of 3	
ASME Y14.5	angular	0° ±2°	www.fci.com		cat. no.		Product - Customer Drw		sheet 1 of 3	



Copyright FCI.

PRODUCT NO.	ROWS	HP		SIGNAL						HP	
		E1	P1	1	2	3	4	5	6	P2	E2
10106266-2LUB201LF	DCBA										

CODE	DESCRIPTION
E	STD SIGNAL CONTACT
HI	STD HIGH POWER CONTACT
HA	METAL HOLD DOWN



dr	Xie Bob	2014/02/13	projection	MM	size	A3	scale	3:2	
eng	Xie Bob	2014/03/10		← →	ecn no	-	rel level	Released	
chr	Li-He	2014/03/10							
appr	Pei-Ming Zheng	2014/03/10	product family	PwrBlade+					
		IP+ 24S+IP			dwg no	10106266-2LUB201		rev	A
www.fci.com		cat. no.	Product - Customer Drw		sheet 2 of 3				

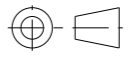
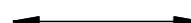

Copyright FCI.

NOTES:

- 1) "FCI", PART NUMBER AND DATE CODE TO BE MARKED ON THIS SURFACE.  
THE MARK CAN BE OMITTED IF THERE IS NOT ENOUGH SPACE ON THIS SURFACE.
- 2) MATERIALS:  
-HOUSING - GLASS FILLED WITH HIGH TEMP THERMOPLASTIC, UL94V-0.  
-SIGNAL CONTACT - COPPER ALLOY.  
-POWER CONTACT - HIGH CONDUCTIVITY COPPER ALLOY.
- 3) PLATING SPECIFICATION REFER TO FCI 10123565
- 4) DENOTES CONNECTOR KEEP OUT ZONE.
- 5) DATUM AND BASIC DIMENIONS WERE ESTABLISHED BY CUSTOMER.
- 6) ALL HOLE DIAMETERS ARE FINISHED HOLE SIZES.
- 7)  $1.15 \pm 0.025$ MM DRILLED HOLE PLATED WITH 0.00762MM MIN Sn  
OVER 0.0254-0.0762MM Cu PLATING TO ACHIEVE A  $1.02 \pm 0.07$ MM HOLE.
- 8) PRODUCT SPECIFICATION REFER TO FCI GS-12-658.  
APPLICATION SPECIFICATION REFER TO FCI GS-20-141.  
PRODUCT PACKAGED IN TRAYS, REFER TO FCI GS-14-1502.
- 9) SPECAIL LUBRICANT COMPOSED Zonyl PFPE 109  
APPLIED TO THE MATING INTERFACE OF THE HIGH POWER  
CONTACTS WITH 3-BEAMS .



Copyright FCI.

dr	Xie Bob	2014/02/13	projection 	MM 	size	A3	scale	3:2
eng	Xie Bob	2014/03/10			ecn no	-		
chr	Li-He	2014/03/10			rel level	Released		
appr	Pei-Ming Zheng	2014/03/10	product family	PwrBlade+				
		title IP+ 24S+IP VERTICAL STB HEADER		dwg no 10106266-2LUB201	rev A			
www.fci.com		cat. no.	Product - Customer Drw		sheet 3 of 3			