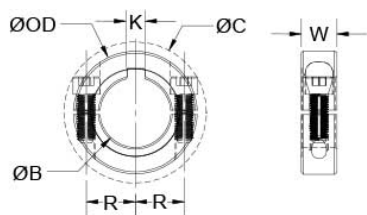




SPK-35-F

Ruland SPK-35-F, 2 3/16" Two-Piece Shaft Collar, Black Oxide Steel, Clamp Style With Keyway, 3 1/4" OD, 0.750" Width




Description

Ruland SPK-35-F is a two-piece shaft collar with a 2.1875" bore, 3 1/4" OD, 0.750" width, and 1/2" keyway. The clamp style design does not mar the shaft, is easy to remove, and is indefinitely adjustable. It is commonly used for guiding, spacing, stopping, mounting, and component alignment. The keyway prevents slippage on the shaft when the shaft collar is used for positive drive. Equipment manufacturers benefit from the tightly controlled face to bore perpendicularity of Ruland shaft collars, TIR of ± 0.002 ". Perpendicularity is critical for alignment when the shaft collar is used as a load bearing face, mechanical stop, or for mounting components such as gears or bearings. Proprietary processes have been developed by Ruland to maintain superior fit, finish, and holding power. SPK-35-F is stamped with the Ruland name and bore size for ease of identification. Halves are mated throughout the manufacturing process for proper fit and alignment. Forged screws test beyond ANSI standards to ensure maximum holding power. SPK-35-F is manufactured from solid bar stock sourced from select North American mills and machined to a fine burr free finish. Ruland uses 1215 lead-free steel with a proprietary black oxide finish that produces a fine glossy finish while increasing holding power and resisting corrosion. SPK-35-F is RoHS3 and REACH compliant and manufactured in our Marlborough, MA factory under strict controls using proprietary processes.

Product Specifications

Bore (B)	2.1875 in	Bore Tolerance	+0.0020 in / +0.0005 in
Keyway (K)	1/2 in	Width (W)	0.750 in
Outer Diameter (OD)	3 1/4 in	Width Tolerance	+0.003 in / -0.010 in
Clearance Diameter (C) MAX	3.504 in	Recommended Gap	0.125 in
Recommended Shaft Tolerance	+0.0000 in / -0.0005 in	Forged Clamp Screw	5/16-24
Screw Material	Alloy Steel	Hex Wrench Size	1/4 in
Screw Finish	Black Oxide	Seating Torque	325 lb-in
Screw Location (R)	1.375 in	Number of Screws	2 ea
Material Specification	1215 Carbon Steel Bar	Temperature	-40°F to 350°F (-40°C to 176°C)
Finish Specification	Hot Process Black Oxide, Impregnated with Naphthenic Oil, Centrifugally Dried	Manufacturer	Ruland Manufacturing
Country of Origin	USA	Weight (lbs)	0.850500
UPC	634529078204	UNSPC	31162811
Tariff Code	8483.60.8000		

Note 1 Performance ratings are for guidance only. The user must determine suitability for a particular application.

Prop 65  **WARNING** This product can expose you to the chemical Ethylene Thiourea, known to the State of California to cause cancer and birth defects or other reproductive harm. For more information go to www.P65Warnings.ca.gov.

Installation Instructions

1. Use the SPK-35-F two-piece shaft collar as it is received.
2. Wipe the bore clean.
3. Apply a thin coat of light oil to the shaft.
4. Place the collar onto the desired shaft location with the groove side as the work surface. Tighten the collar using a 1/4 in hex wrench until a slight resistance is felt.
5. Be sure to maintain the gap of 0.063 in between the two halves of the collar during installation.
6. Wring collar into its final position and tighten the screw to the full recommended seating torque of 325 lb-in using a 1/4 in torque wrench.

