

CABTITE FR 24/10 BK SET**Weidmüller Interface GmbH & Co. KG**

Klingenbergstraße 26

D-32758 Detmold

Germany

www.weidmueller.com

Similar to illustration

The frame, fabricated from a single piece, is quick and easy to assemble and consists of dimensionally stable, fibre-glass reinforced plastic. The captive foamed seal guarantees effective IP66 sealing in accordance with DIN EN 60529, even on painted and rough surfaces.

General ordering data

Version	Frame, Cabtite (cable entry system), Polyamide, glass fibre-reinforced, Deep black, Height: 70 mm, Width: 153 mm, Depth: 19.6 mm, -40 °C...120 °C, IP66
Order No.	2583720000
Type	CABTITE FR 24/10 BK SET
GTIN (EAN)	4050118617252
Qty.	1 pc(s).

Creation date January 30, 2022 9:39:03 PM CET

Catalogue status 14.01.2022 / We reserve the right to make technical changes.

CABTITE FR 24/10 BK SET

Weidmüller Interface GmbH & Co. KG

Klingenbergstraße 26

D-32758 Detmold

Germany

www.weidmueller.com

Technical data

Dimensions and weights

Depth	19.6 mm	Depth (inches)	0.772 inch
Height	70 mm	Height (inches)	2.756 inch
Height of lowest version	19.6 mm	Width	153 mm
Width (inches)	6.024 inch	Diameter	5.5 mm
Mounting dimension - height	130 mm	Mounting dimension - width	32 mm
Net weight	110 g		

Temperatures

Operating temperature	-40 °C...120 °C
-----------------------	-----------------

General information

Halogen	No	Material	Polyamide, glass fibre-reinforced
Opening length	113.5 mm	Opening width	46 mm
Protection degree	IP66	Sealing	TPE
Sealing element	2 large sealing elements and 4 small sealing elements or 1 large sealing element and 6 small sealing elements or 10 small sealing elements	Silicone	
Tightening torque	3 Nm	UL 94 flammability rating	No V-0

Classifications

ETIM 6.0	EC002624	ETIM 7.0	EC002624
ETIM 8.0	EC002624	ECLASS 9.0	27-18-28-15
ECLASS 9.1	27-18-92-65	ECLASS 10.0	27-18-28-15
ECLASS 11.0	27-18-28-15		

Approvals

ROHS	Conform
------	---------

Downloads

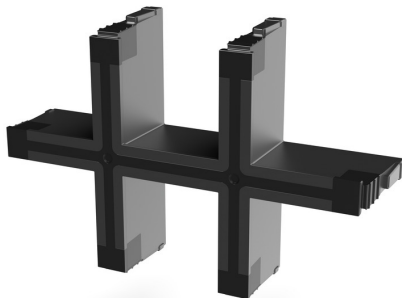
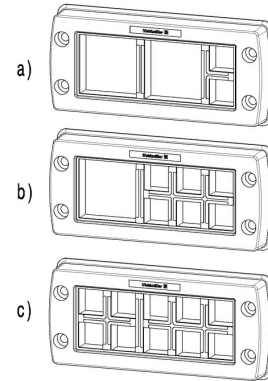
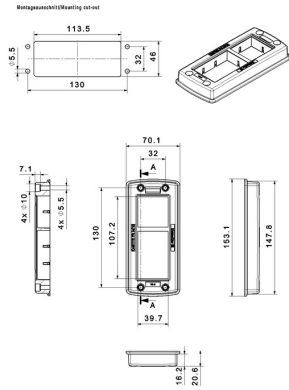
Engineering Data	CAD data – STEP
Engineering Data	EPLAN
User Documentation	Cabtite Installation Instructions
Catalogues	Catalogues in PDF-format

CABTITE FR 24/10 BK SET

Weidmüller Interface GmbH & Co. KG
Klingenbergstraße 26
D-32758 Detmold
Germany

Drawings

www.weidmueller.com



CABTITE FR 24/10 BK SET

Weidmüller Interface GmbH & Co. KG
Klingenbergstraße 26
D-32758 Detmold
Germany

www.weidmueller.com

Accessories

Shield connection rails



In combination with a large number of different shield connection clamps (KLBÜ), the shield connection rails enable practical, uncomplicated and fast shielding of cables.

General ordering data

Type	CABTITE CR 24/10 EMV	Version
Order No.	2583890000	Shield connection rail, Cabtite (cable entry system), Steel, galvanized,
GTIN (EAN)	4050118647068	silver, Height: 35.23 mm, Width: 140 mm, Depth: 16 mm
Qty.	10 pc(s).	

Locking frame



The frame, fabricated from a single piece, is quick and easy to assemble and consists of dimensionally stable, fibre-glass reinforced plastic. The captive foamed seal guarantees effective IP66 sealing in accordance with DIN EN 60529, even on painted and rough surfaces.

General ordering data

Type	CABTITE FRL 24/10 BK	Version
Order No.	2584210000	Locking frame, Cabtite (cable entry system), Polyamide, glass fibre-reinforced, Deep black, Height: 68.8 mm, Width: 152 mm, Depth:
GTIN (EAN)	4050118615289	11.3 mm, -40 °C...120 °C, IP66
Qty.	10 pc(s).	