

THIS DRAWING IS UNPUBLISHED. RELEASED FOR PUBLICATION. COPYRIGHT - BY TYCO ELECTRONICS CORPORATION. ALL RIGHTS RESERVED.

PART NUMBER	REV	FIRST USED	MACHINE REFERENCE	FEED TYPE
566389-1	J	356462-2	G-SPLICE TERM	AIR FEED
566389-2	K	2161300-1	SK CE & GI THRU SPLICE	AIR FEED
7-566389-7	J	356462-2	SPARE PARTS KIT	-
7-566389-8	K	-	CONV. KIT FOR -1 TO -2	-

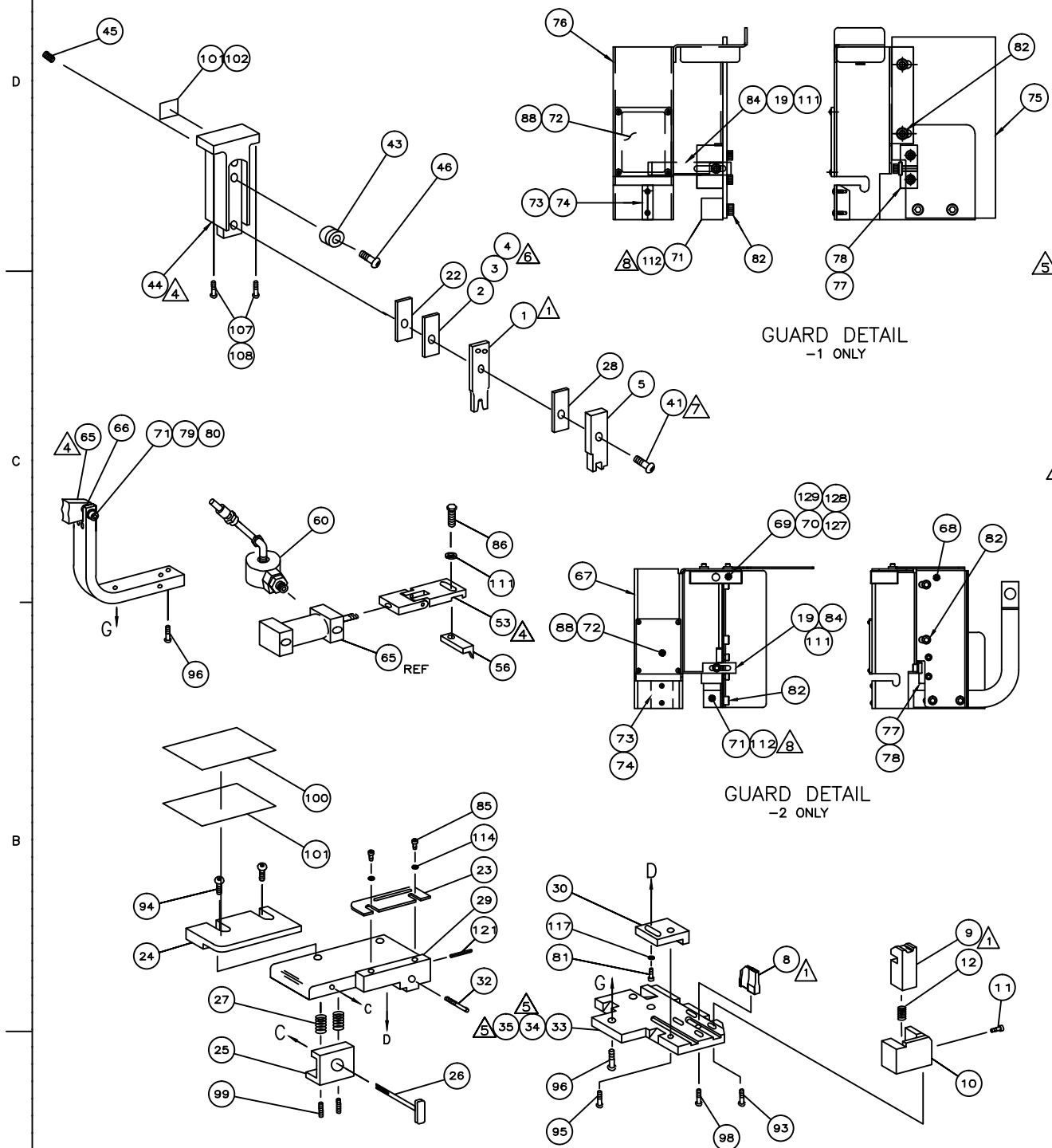
TERMINAL NAME: SPLICE

PAD NO.	CRIMP HEIGHT	WIRE SIZE	WIRE SET UP
5	.149 ±.002 [3.79 ±0.05mm]	14,000-16,000 CMA	(1)10 & (1)14
4	.144 ±.002 [3.66 ±0.05mm]	13,000-14,500 CMA	(2)12
4	.139 ±.002 [3.53 ±0.05mm]	11,500-13,000 CMA	(1)10 & (1)16
3	.134 ±.002 [3.40 ±0.05mm]	10,000-11,500 CMA	(1)12 & (1)14

CRIMP SIZE	TYPE	RANGE
WIRE .180 [4.57mm]	F	10,000-16,000 CMA
INSUL		

WIRE STRIP LENGTH	TERM APPL SPEC	FEED	APPL INSTRUCTION	SET UP GAGE	LAYOUT
.295-.335	114-2088	.620	408-8318(-1) 408-32027(-2)	-	L2287

LOC	DIST	REVISIONS			
A	66	REV	DATE	BY	APPD
		K	07-2015	RS	UG



QTY REQD PER ASSY	PART NO	DESCRIPTION	ITEM NO
2	18029-2	M4 HEX NUT	129
2	18025-2	M4 LOCK WASHER	128
2	18027-2	M4 FLAT WASHER	127
1	408-32162	THRU SPLICE IS SHEET-GII	126
	408-32027	THRU SPLICE IS SHEET	125
	217238-1	GENERAL INSTRUCTION PACKAGE	124
	408-8318	THRU SPLICE IS SHEET	123
			122
			121
			120
			119
			118
			117
	21024-5	WASHER, LOCK(#10)ADJ BLOCK	116
			115
			114
			113
	AR	WASHER, FLAT (#10)	112
	21024-4	WASHER,LOCK(#8)STRIPPER	111
			110
			109
2	3-18023-3	SCR,SHC (M6 X 50)	108
	3-18023-0	SCR,SHC(6 X 25)RAM	107
			106
			105
			104
			103
			102
	690701-2	PLATE, IDENTIFICATION	101
	AR	TAPE, POLYURETHANE FOAM	101
	26704-2	PLATE, IDENTIFICATION	100
	5-21006-6	SCR,SET(10-32x.75)DRAG	99
	22733-8	SCR,BHC(8-32x.38 LW)ANVIL	98
			97
	2-22733-8	SCR,BHC(1/4-20x.62)FEED	96
	2-21002-7	SCR,BHC(10-32x.50)SG ADJ BLK	95
	2-21002-3	SCR,BHC(8-32x.62)TERM H DWN	94
	2-21002-2	SCR,BHC(8-32x.50)HOLDER	93
			92
			91
			90
			89
	1-21002-0	SCR,BHC(2-56x.25)GUARD	88
			87
	2-22603-1	SCR,HEX HD(8-32x.38)FEED FINGER	86
	1-21000-3	SCR,SHC(4-40x.25)F ST GUIDE	85
	2-21000-7	SCR,SHC(8-32x.50)STRIPPER	84
			83
	3-21000-4	SCR,SHC(10-32x.38)GUARD	82
	3-22603-1	SCR,HEX(10-32x.38)SG ADJ BL	81
	3-21001-3	SCR,SHC(3/8-16x.75)AIR ASSY	80
	21024-8	WASHER, LOCK, .38	79
	1338118-1	MOUNT, STRIPPER	78
	2-21000-0	SCR,SHC(6-32x.75)STR MOUNT	77
	1338175-1	GUARD	76
	1338176-1	GUARD, EXTENSION	75
	1338177-1	DEFLECTOR	74
	21002-9	SCR, BHC 2-56 X .19 LG.	73
	1338174-1	WINDOW, GUARD	72
	1338116-1	BRACKET, FEED	71
QTY REQD PER ASSY	PART NO	DESCRIPTION	ITEM NO

QTY REQD PER ASSY	PART NO	DESCRIPTION	ITEM NO
2	1-18023-3	SCR, SHC, M4 X 16	70
1	2168489-1	ACTUATOR, SPARE MC1	69
1	2161461-1	GUARD, EXTENSION	68
1	2161460-1	GUARD	67
	371178	BASE MOUNT WASHER	66
	461065-1	AIR FEED ASSY (1 INCH)	65
			64
			63
			62
			61
	692655-7	AIR FEED VALVE ASSY	60
			59
			58
			57
	2-694433-6	PAWL, FEED	56
			55
			54
	1-461062-1	FEED FINGER ASSY	53
			52
			51
			50
			49
			48
			47
	21004-9	SCR,SHC(.31 X .50)WHEEL ADJ	46
	27058-2	BALL PLUNGER	45
	1338117-1	TOOL HOLDER ASSY	44
	1338124-1	WHEEL, ADJ	43
	7-21002-8	BOLT, CRIMPER(5/16x.88)	41
			40
			39
			38
			37
			36
	18027-4	WASHER, FLAT, M6	35
	2-18023-8	SCR,SHC(M6 X 20)	34
	1338397-1	PLATE, BASE	33
	690432-3	SCREW, ADJUSTMENT	32
			31
	455689-1	BLOCK, STRIP GUIDE ADJ	30
	455671-1	PLATE, STRIP GUIDE	29
	1-455888-4	SPACER, FRONT SHEAR DEP	28
	1-22284-0	SPRING, DRAG	27
	690546-1	LEVER, DRAG RELEASE	26
	240792-1	DRAG, TERMINAL	25
	6-690440-8	GUIDE, STRIP (REAR)	24
	690438-1	GUIDE, STRIP (FRONT)	23
	1338200-4	SPACER, WIRE CRIMPER	22
			21
			20
	1-690472-6	STRIPPER	19
			18
			17
			16
			15
			14
			13
	3-22280-3	SPRING, SHEAR	12
	690461-2	STOP, SHEAR	11
	1-690459-0	HOLDER, SHEAR (FRONT)	10
	454276-5	SHEAR, FLOAT (FRONT)	9
	6-690512-1	ANVIL	8
			7
			6
			5
	1338126-2	DEPRESSOR, SHEAR (FRONT)	4
	1338200-3	SPACER	3
	1338200-2	SPACER	2
	1338200-1	SPACER	1
QTY REQD PER ASSY	PART NO	DESCRIPTION	ITEM NO

- 1 RECOMMENDED SPARE PARTS.
- 2 GREASE LIGHTLY.
- 3 GUARD MUST BE IN PLACE WHEN OPERATING APPLICATOR IN A BENCH MACHINE.
- 4 SEE DRAWING FOR COMPONENTS
- 5 ITEM NOT SHOWN.
- 6 INSTALL ITEM 2,3 & 4 AS REQUIRED SHIP REMAINING ITEMS WITH APPLICATOR
- 7 CRIMPER BOLT MUST BE LOOSENED TO CHANGE CRIMP HEIGHT ADJUSTING WHEEL. BE SURE TO SEAT THE CRIMPER AGAINST THE ADJUSTING WHEEL AND REALIGN THE TOOLING.
- 8 PLACE ITEM 112 BETWEEN ITEM 71 AND 75 ON -1. PLACE ITEM 112 BETWEEN ITEM 71 AND 68 ON -2.

THIS DRAWING IS A CONTROLLED DOCUMENT.

BY: C. ERISMAN SEP2399
CHK: C. ERISMAN SEP2399
APPRO: J. BELBIN SEP2399

TE CONNECTIVITY
Harrisburg, PA 17105-3608

SIDE FEED THRU SPLICE APPLICATOR

APPLICATOR SPEC: -
MATERIAL: -
FINISH: -

SIZE: A1
SCALE: -
SHEET: 1 of 1
REV: K