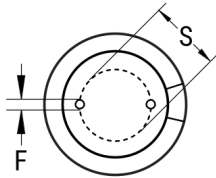


SIDE VIEW



TERMINAL END VIEW



Click [here](#) for the 3D model.

| Dimensions | |
|-------------|--------------|
| D | 5mm +/-0.5mm |
| L | 11mm +1.5mm |
| S | 2mm +/-0.5mm |
| LL Negative | 15mm MIN |
| LL Positive | 20mm MIN |
| F | 0.5mm NOM |

| Packaging Specifications | |
|--------------------------|-----------|
| Packaging | Bulk, Bag |
| Packaging Quantity | 10000 |

General Information

| | |
|-------------|--|
| Series | ESH |
| Dielectric | Aluminum Electrolytic |
| Description | High CV Single Ended Aluminum Electrolytic |
| Features | High CV |
| RoHS | Yes |
| Lead | Wire Leads |
| AEC-Q200 | No |

Specifications

| | |
|-------------------------|------------------------|
| Capacitance | 2.2 uF |
| Capacitance Tolerance | 20% |
| Voltage DC | 50 VDC, 63 VDC (Surge) |
| Temperature Range | -40/+105°C |
| Rated Temperature | 105°C |
| Life | 2000 Hrs |
| Dissipation Factor | 12% 120Hz 25C |
| Ripple Current | 18 mAmps (120Hz 105C) |
| Leakage Current | 3 uA (2min 20°C) |
| Impedance Ratio at -25C | 2 |
| Impedance Ratio at -40C | 3 |