

Light is OSRAM

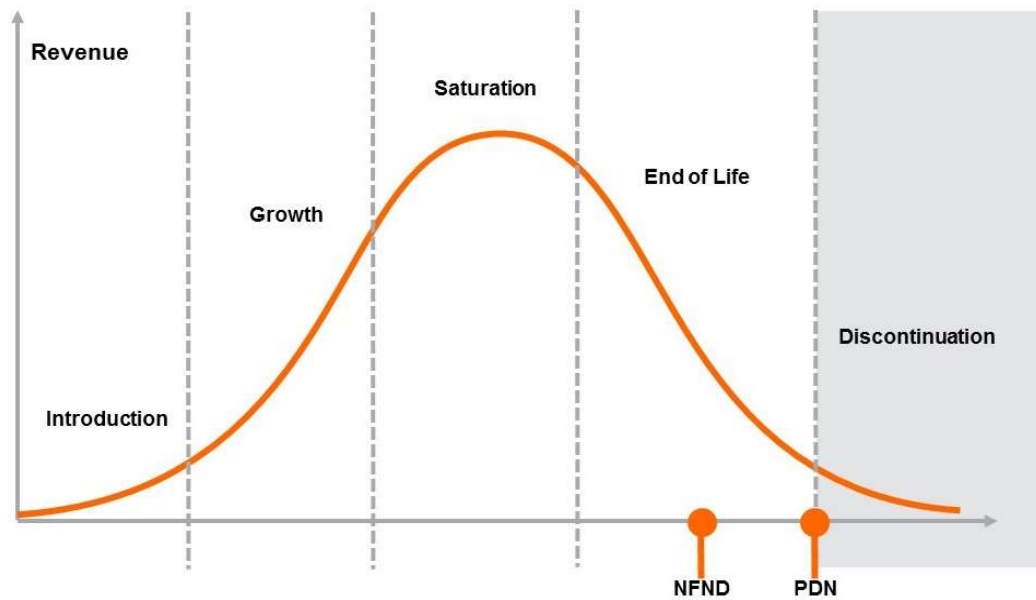
Product Or Individual Q-Code Discontinuation (acc. JEDEC J-STD-048)  
**OS-PDN-2021-032**

01 April 2021

---

Last order:	02 April 2021
Last delivery:	31 May 2021

---



Please direct your feedback to your local Sales office.

DISCONTINUED				NEW (REPLACEMENT)		
Device	Ordering Code	Brand	Reason for discontinuation	Device	Datasheet Ordering Code	Brand
GWM TXLIG2.EM-040-2200-26-LD-IT	Q65112A9499	DURIS	Discontuniation of MMP Device			No replacement
GWM TXLIG1.EM-030-2200-26-LD-IT	Q65112A9500	DURIS	Discontuniation of MMP Device			No replacement
GWM T4LXF1.CM-K1K3-27R-1-T01-GMY	Q65113A0026	DURIS	Discontuniation of MMP Device			No replacement
GWM JTLMSL.CM-L1L3-4005-1-60-R33	Q65113A0430	DURIS	Discontuniation of MMP Device			No replacement
GWM JTLMSL.CM-L1L3-6501-1-60-R33	Q65113A0429	DURIS	Discontuniation of MMP Device			No replacement
GWM JTLMSL.EM-L1L3-4005-1-60-R33	Q65113A0427	DURIS	Discontuniation of MMP Device			No replacement
GWM JTLMSL.EM-L1L3-6501-1-60-R33	Q65113A0426	DURIS	Discontuniation of MMP Device			No replacement
GWM JTLMSM.CM-L1L3-4005-1-60-R33	Q65113A0435	DURIS	Discontuniation of MMP Device			No replacement
GWM JTLMSM.CM-L1L3-6501-1-60-R33	Q65113A0434	DURIS	Discontuniation of MMP Device			No replacement