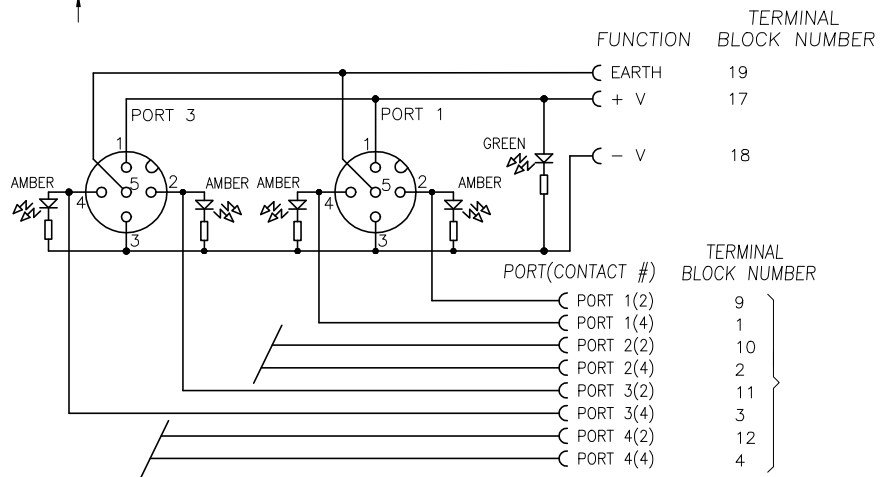
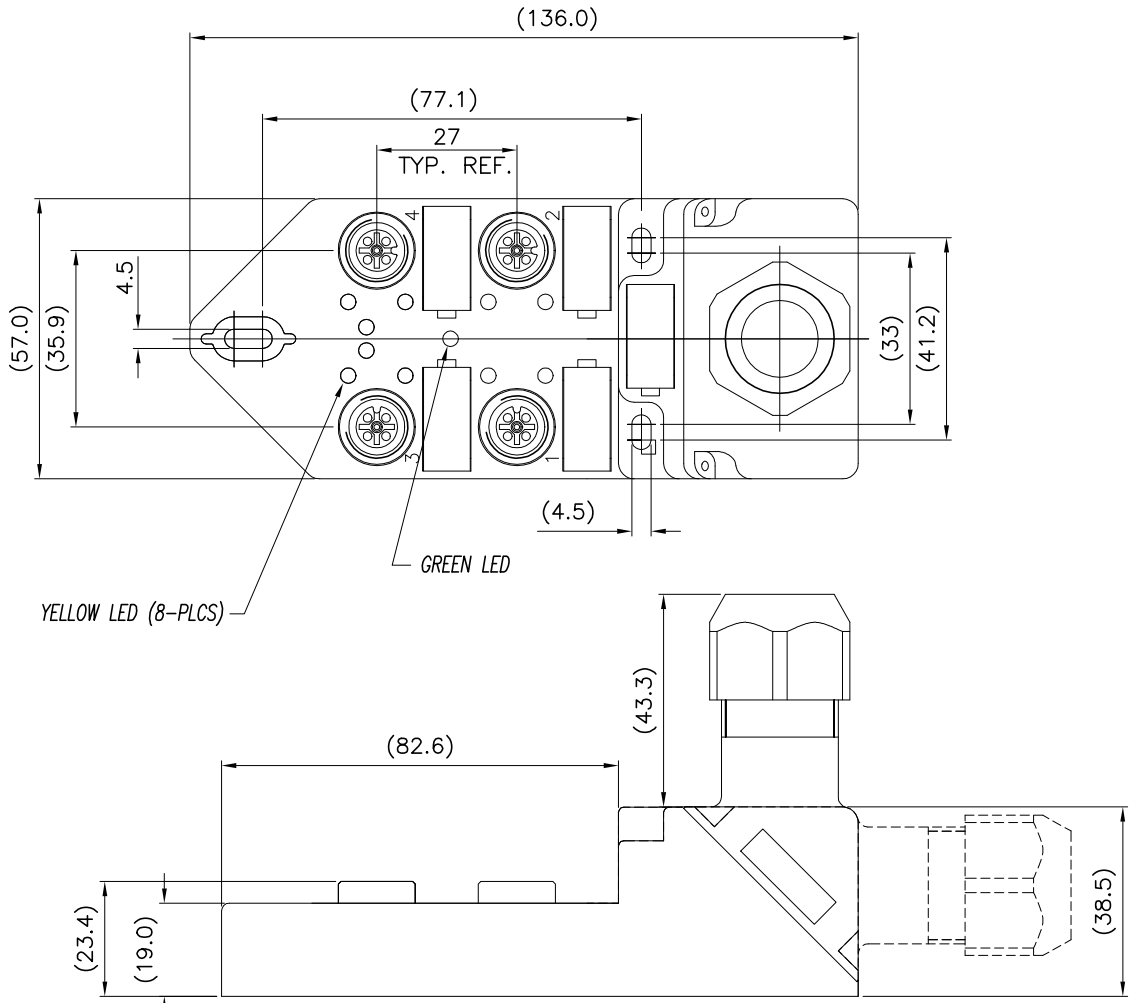
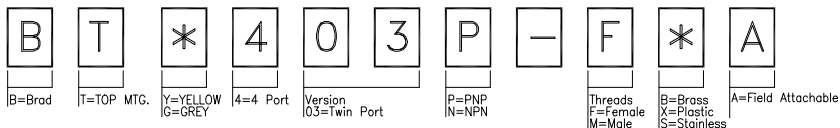


4 PORT PNP (TWIN PORT) MICRO WITH 5 POLE (5 WIRE) RECEPTACLES FIELD ATTACHABLE



PART No MATRIX

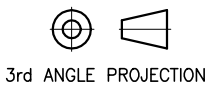


Modifications must be carried out using CAD System

W Woodhead Connectivity Ltd
FACTORY 9 RASSAU IND. EST. EBBW VALE GWENT NP23 5SD

THIS DRAWING IS THE PROPERTY OF WOODHEAD CONNECTIVITY LTD. THE INFORMATION CONTAINED IS CONFIDENTIAL AND MUST NOT BE DISCLOSED

DRAWN	A.Bayton	REV.
DATE	22.9.98	A



FOR EXPLANATION OF DIMENSIONS, TOLERANCES NOTES etc. SEE BS308