

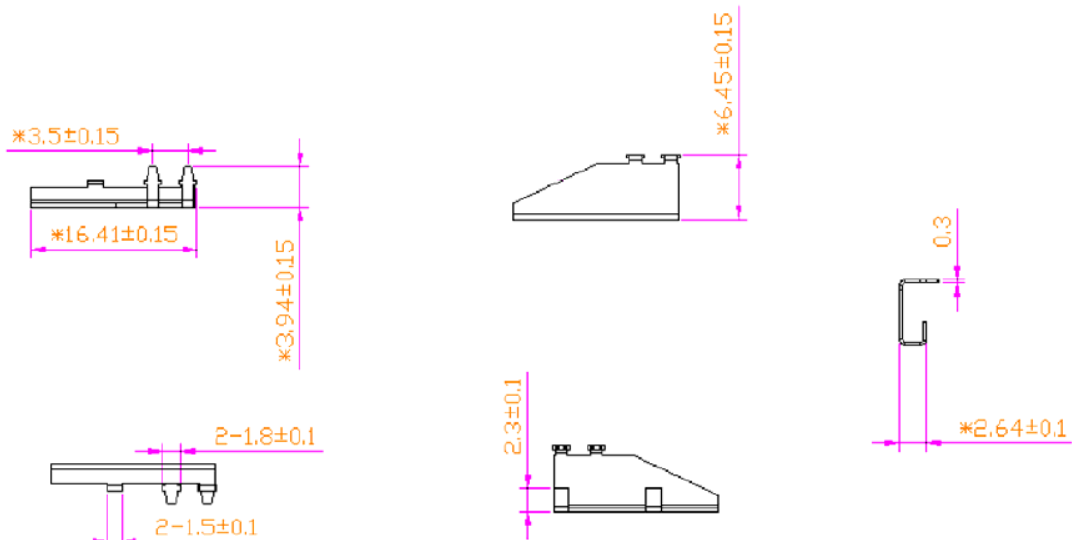
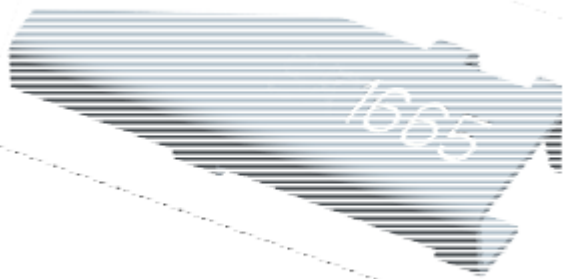
Maswell WiFi/Bluetooth Metal SMD Chip Antenna 1665 footprint

AN_W_CA_1665_T01

1、 Introduction

- ❖ Maswell Microwave Chip Antenna series are designed to be used in WLAN、 WiFi、 Bluetooth and PHS applications.
- ❖ All the models are of compact size and are engineered for SMD mount design.

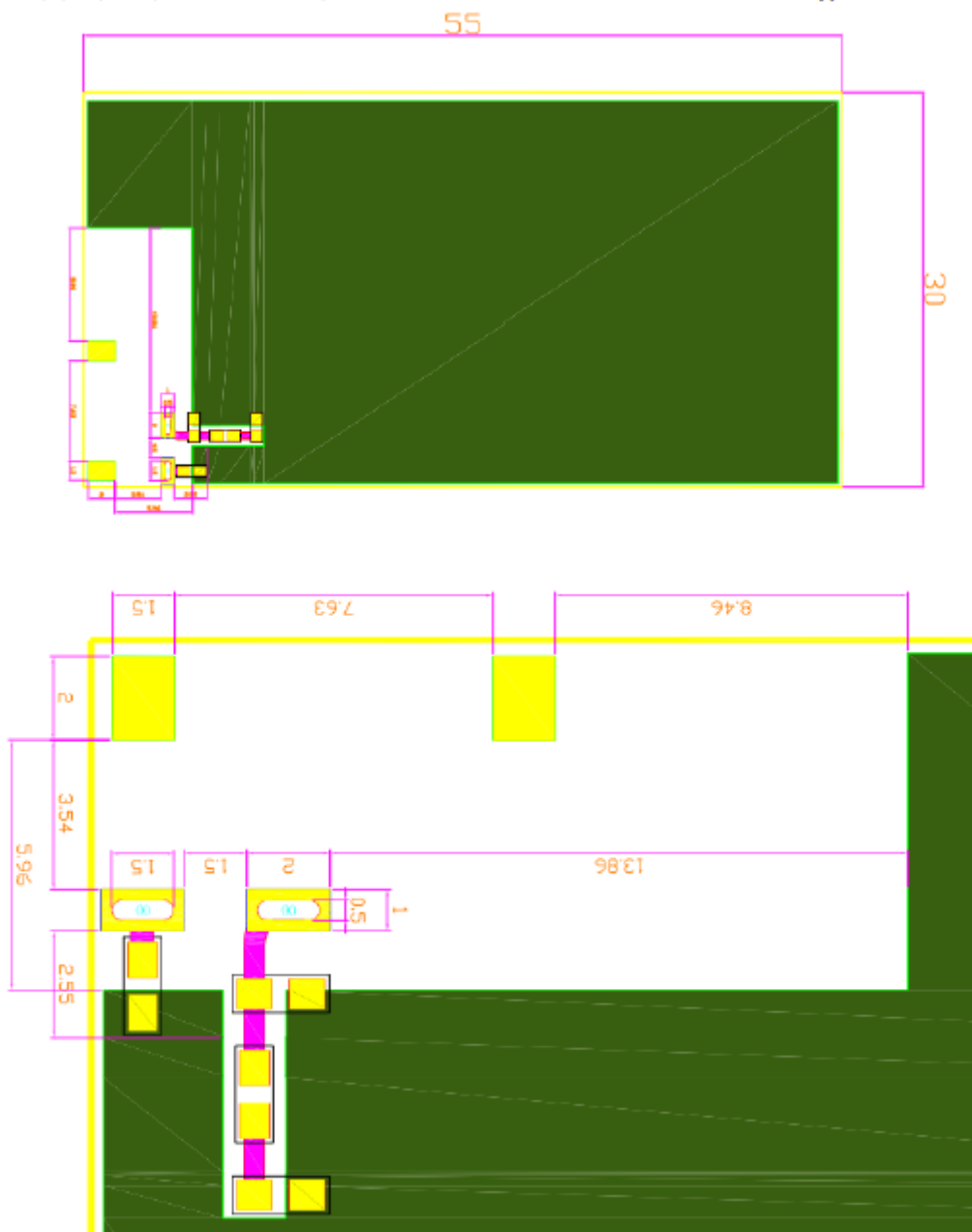
2、 Antenna Dimensions (Unit: mm)



Maswell WiFi/Bluetooth Metal SMD Chip Antenna 1665 footprint

AN_W_CA_1665_T01

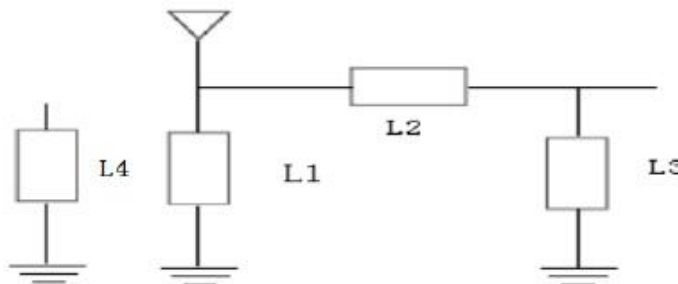
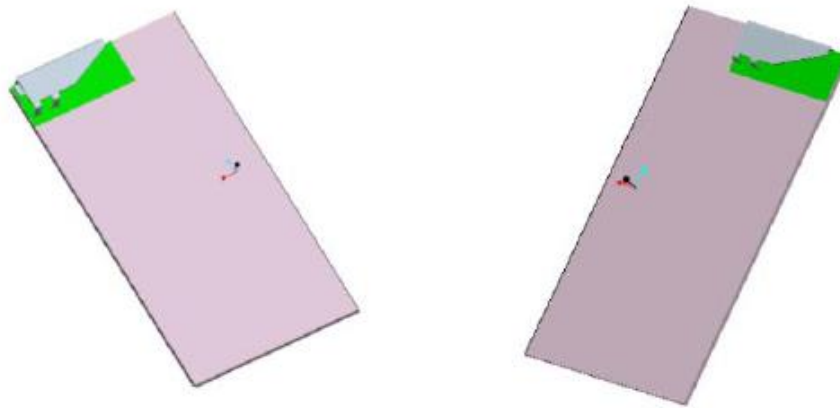
3、 Evaluation Board and Matching Circuits 1665 Foot Print



Maswell WiFi/Bluetooth Metal SMD Chip Antenna 1665 footprint

AN_W_CA_1665_T01

4、Circuit Design



Location	Description	Antenna Type
L1	N/A	
L2	10PF	
L3	N/A	
L4	N/A	Monopole Antenna
L4	0 Ω	PIFA Antenna

Maswell WiFi/Bluetooth Metal SMD Chip Antenna 1665 footprint

AN_W_CA_1665_T01

5、Electrical Characteristics

No.	Item	Specifications
5.1	Aftermatching	2400~2500MHz
5.2	Efficiency	>60%
5.3	Peak Gain	3dBi
5.4	V. S. W. R	≤2.0
5.5	Polarization	Linear
5.6	Azimuth Beam Width	Omni-directional
5.7	Impedance	50Ω

Maswell WiFi/Bluetooth Metal SMD Chip Antenna 1665 footprint

AN_W_CA_1665_T01

6、Return Loss

Reference for frequency tuning element

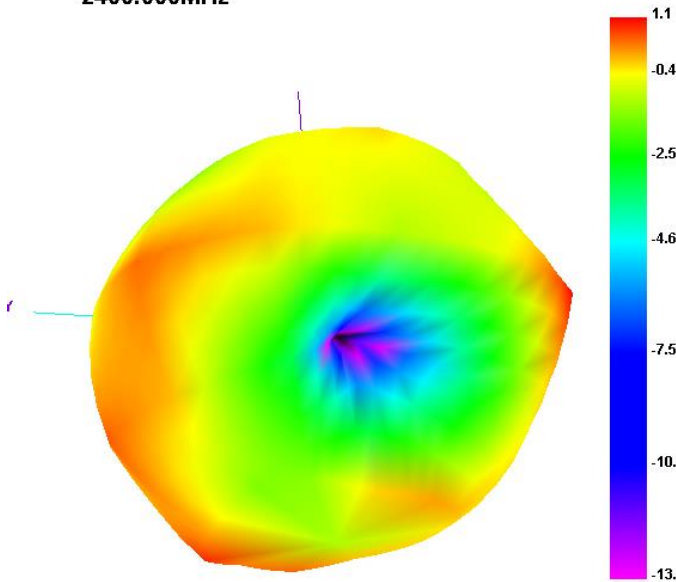


Maswell WiFi/Bluetooth Metal SMD Chip Antenna 1665 footprint

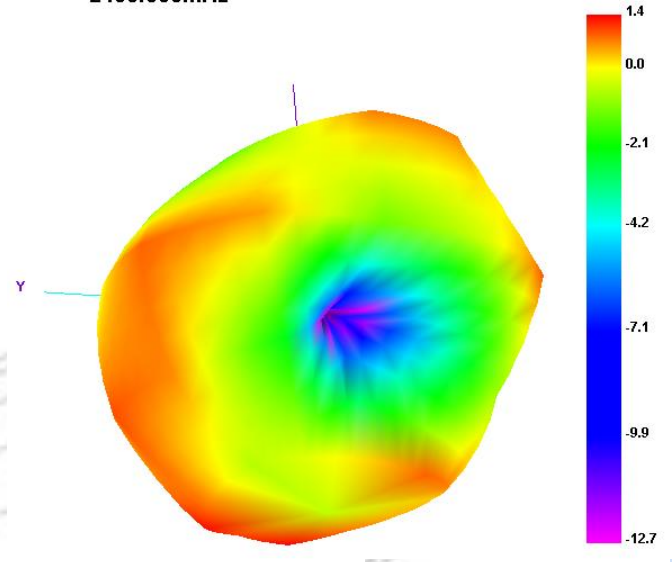
AN_W_CA_1665_T01

7、Radiation Patterns

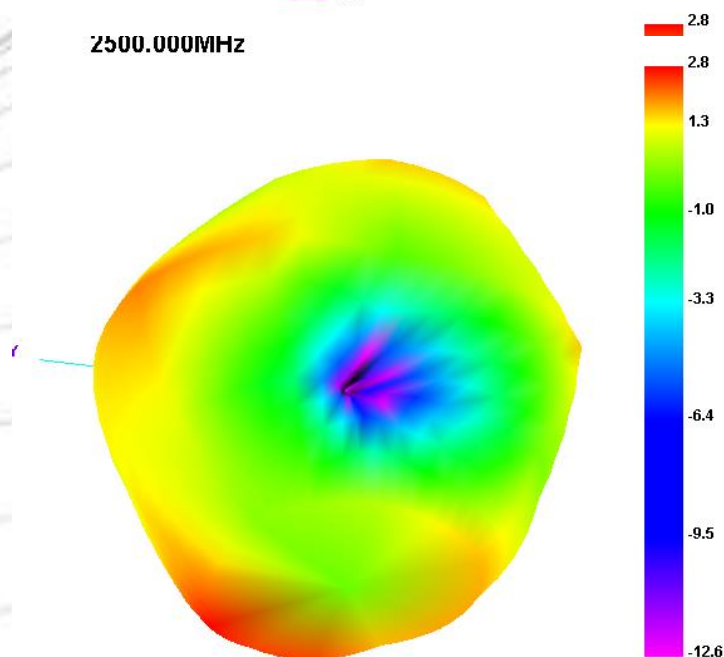
2400.000MHz



2450.000MHz



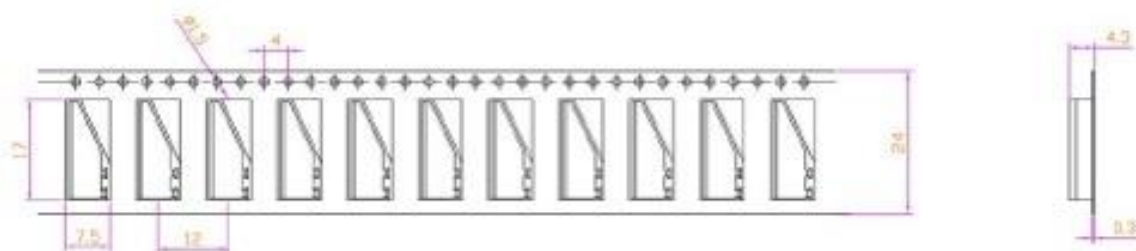
2500.000MHz



Maswell WiFi/Bluetooth Metal SMD Chip Antenna 1665 footprint

AN_W_CA_1665_T01

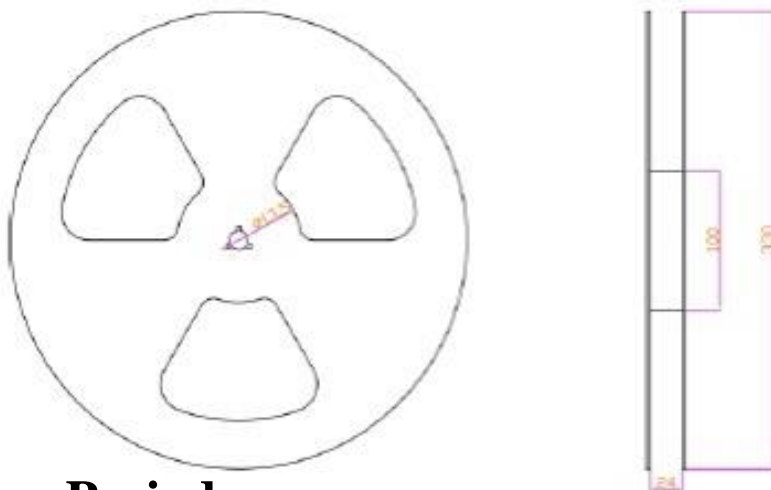
8.1 Plastic Tape



Remarks for Package:

Reserve a length of 150~200mm for the trailer of the carrier and 250~300 mm for the leader of the carrier and further 250mm of cover tape at the leading part of the carrier.

8.2 Reel(1200pcs/Reel)



8.3 Storage Period

Oxidizable, 36 months in vacuum sealed bag. Material, please repack within 168 hours by re-seal the package treatment after use them!

Storage Temperature Range:<30 degree C

Humidity:<60% RH