

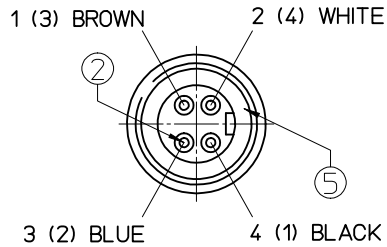
CABLE SPECIFICATION:

OUTER DIAMETER: 7.8±0.3 mm  
 TEMPERATURE RANGE STATIC: -40 TO +90 °C (3000h)  
 TEMPERATURE RANGE DYNAMIC: -25 TO +80 °C  
 OMOLOGATION: UL STYLE 21215 + CSA ; RATING 80°C 600V  
 VOLTAGE RATING: 1000 V (450/750)  
 UV RESISTANT: YES (UL1581/2556- 300h)

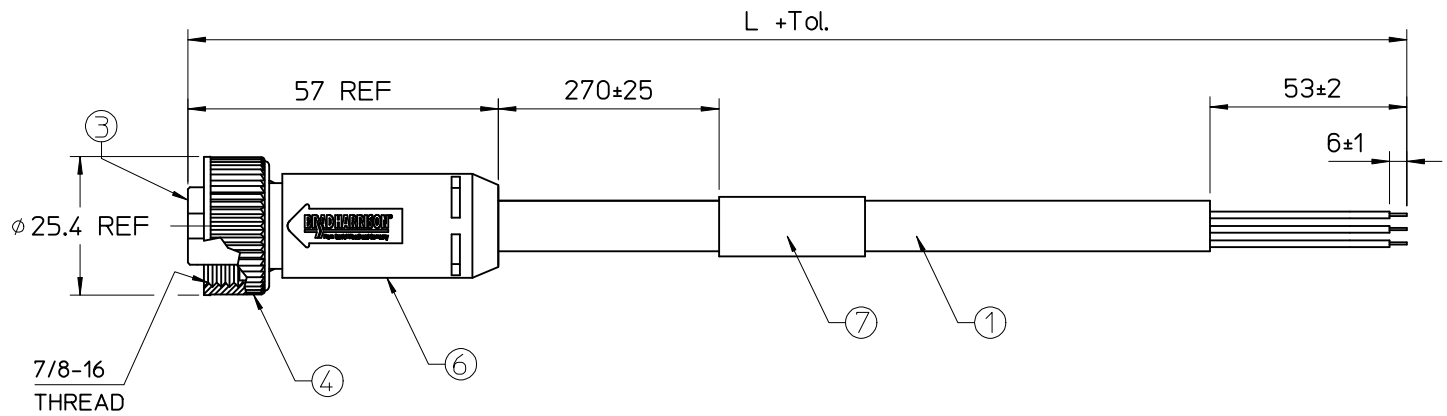
CHART 1

MOLEX PN	ENGINEERING PN	L [mm]
1300068179	104000B48M020	2000 +89
1300068180	104000B48M050	5000 +165
1300068181	104000B48M100	10000 +317
1300068182	104000B48M300	30000 +622
1300068195	104000B48M400	40000 +800

CENELEC PIN-OUT  
 (SAE PIN-OUT IN PARANTHESIS)



VIEW FROM THE FRONT SIDE



Bill of Materials

ITEM	QTY.	DESCRIPTION	MATERIAL	FINISH
7	1	LABEL	-	-
6	-	OVERMOULD	TPU	BLACK
5	1	FRICTION RING - A SIZE	NYLON	-
4	1	M16 COUPLING NUT (A-SIZE)	ZINC ALLOY	BLACK
3	1	4P FEMALE INSERT A-SIZE	PUR	BLACK
2	4	FEMALE CONTACT	COPPER ALLOY	GOLD
1	-	CABLE 4x1.5mm <sup>2</sup>	TPU	GRAY

**NEW PN ADDED**  
 IEC NO: IPG2015-0781  
 DRWN:FGAIK 2014/10/25  
 CH'KD:WSTRASKIEWI 2014/10/25  
 APPR:MIWASIECZKO 2014/11/04

QUALITY SYMBOLS  
 ▽=0  
 ◻=0

REV B2

	GENERAL TOLERANCES (UNLESS SPECIFIED)	
	mm	INCH
4 PLACES	± ---	± ---
3 PLACES	± ---	± ---
2 PLACES	± 0.05	± ---
1 PLACE	± 0.3	± ---
0 PLACE	± 0.5	± ---

ANGULAR ± 1 °  
 DRAFT WHERE APPLICABLE MUST REMAIN WITHIN DIMENSIONS

DIMENSION STYLE	
MM ONLY	
DRAWN BY	DATE
FGAIK	2014/04/29
CHECKED BY	DATE
JMARSZALEK	2014/04/29
APPROVED BY	DATE
MIWASIECZKO	2014/06/16
MATERIAL NO.	
SEE CHART 1	

SCALE	DESIGN UNITS	THIRD ANGLE PROJECTION
---	METRIC	☉
TITLE		
MC-4P-FE-ST-XM-PUR		
<b>molex</b>		
DOCUMENT NO.	SHEET NO.	
SD-130006-052	1 OF 1	
THIS DRAWING CONTAINS INFORMATION THAT IS PROPRIETARY TO MOLEX INCORPORATED AND SHOULD NOT BE USED WITHOUT WRITTEN PERMISSION		