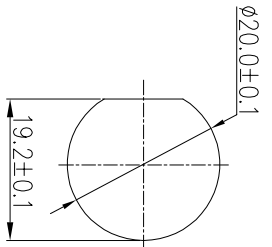
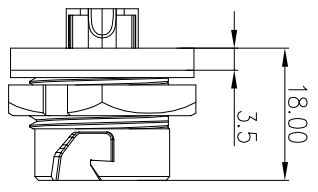


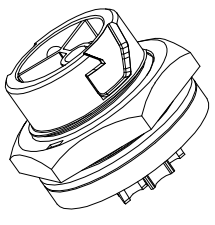
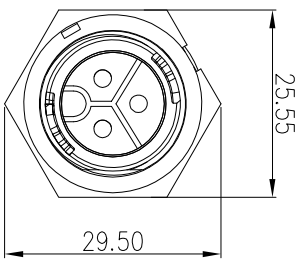
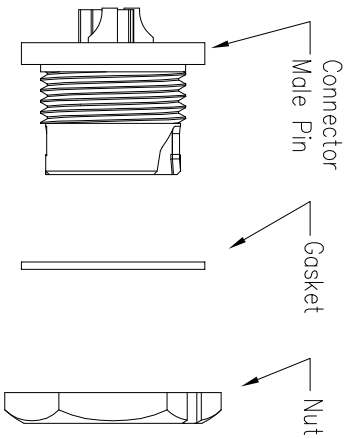
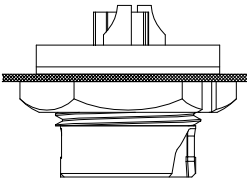
REV.	EN. NO.	DESCRIPTION	SIGN	DATE
C1	N/A	INITIAL DRAWING	Liu	2019/08/13



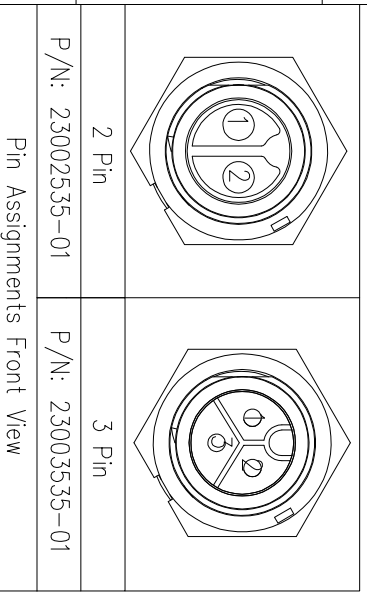
Recommended Panel Cut-Out



Panel T: Max 2.5

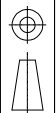


- Specification:
1. Operation Temperature: $-45^{\circ}\text{C} \sim 105^{\circ}\text{C}$.
 2. Insulation Resistance: $100\text{M}\Omega$ at DC500V.
 3. Contact Resistance: $<10\text{m}\Omega$.
 4. Withstand Voltage: 2000V AC
 5. Operating Current: 20A
 6. Operating Voltage: AC 300V
 7. Waterproof Rate: IP67 (Mated)
 8. Housing: Nylon, Black
 9. Male Pin: Copper Alloy, Gold Plated
 10. Gasket: Silicon Gray
 11. Panel Nut: Nylon, Orange
 12. Torque Rate: $0.8 \sim 1.0\text{N} \cdot \text{m}$
 13. RoHS Compliant.
 14. UL Compliant.
 15. Mating Cap P/N: 806-00047-00



P/N: 23002535-01
P/N: 23003535-01

Pin Assignments Front View



UNIT: mm
TOLERANCE
X: ± 0.25
.XX: ± 0.15
.XXX: ± 0.05
ANGLES: $\pm 1'$

DESCRIPTION
Middle Series Push Lock
Front Mount With Male Pin

SCALE: 1:1
REV: C1
SIZE: A4
SHEET: 1 OF 1
*: Inspection Item

CHOGORI

PART NO: 23XXX535-01
DRAWN BY: Liu
DATE: 2019/08/13

DWG NO: _____
CHECKED BY: Mo
DATE: 2019/08/13

CUSTOMER: _____
APPROVED BY: Panson
DATE: 2019/08/13