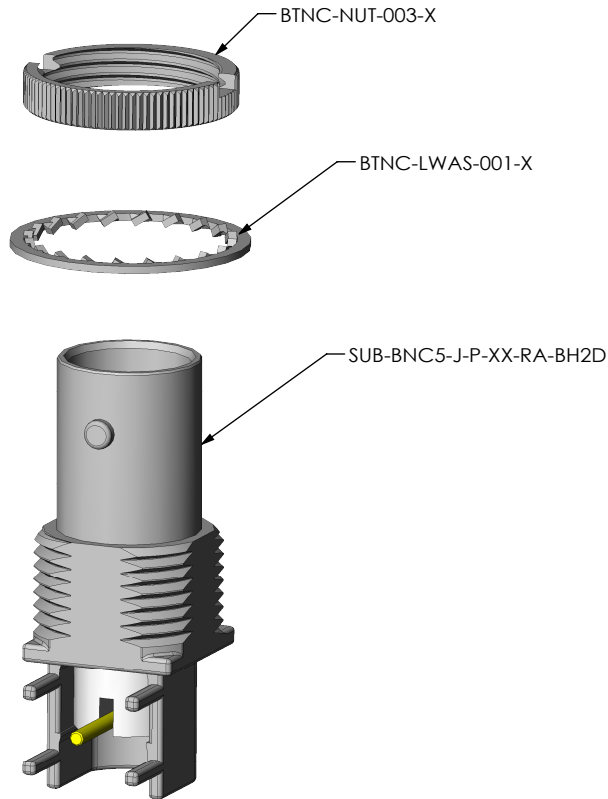


DO NOT SCALE FROM THIS PRINT

DESIGNED & DIMENSIONED IN MILLIMETERS [INCHES]



BNC5-J-P-XX-RA-BH2D

SERIES
BNC 50 OHM

GENDER
-J: JACK

TYPE
-P: PCB

TERMINATION
-BH2D: DIE CAST BULKHEAD THROUGH HOLE

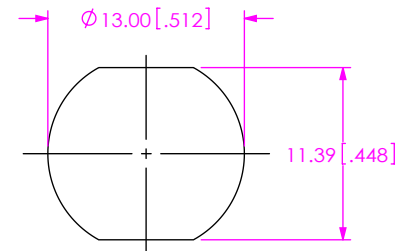
ORIENTATION
-RA: RIGHT ANGLE

PLATING SPECIFICATION
-HN: HEAVY GOLD/NICKEL (SEE NOTES 3 & 4)
(SUB-BNC5-J-P-HN-RA-BH2D)
(BTNC-NUT-003-N)
(BTNC-LWAS-001-N)

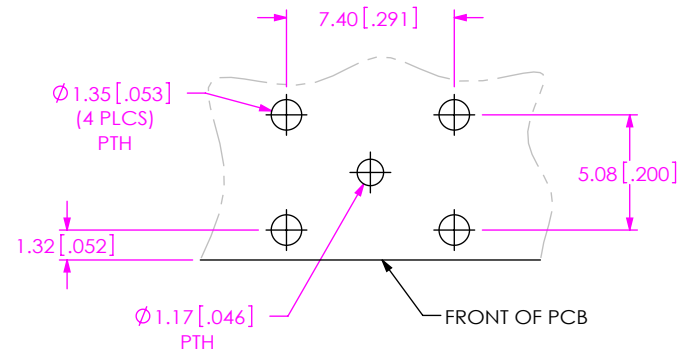
-GN: GOLD/NICKEL (SEE NOTES 3 & 4)
(SUB-BNC5-J-P-GN-RA-BH2D)
(BTNC-NUT-003-N)
(BTNC-LWAS-001-N)

RECOMMENDED MOUNTING HOLE

4.00 [1.57] MAX. PANEL THICKNESS



RECOMMENDED PCB LAYOUT



NOTES:

1. ⊕ REPRESENTS A CRITICAL DIMENSION.
2. RoHS COMPLIANT.
3. COMPONENT PLATING DESIGNATIONS:
-H: 0.000030" MIN. GOLD OVER 0.000050" MIN. NICKEL.
-G: 0.000010" MIN. GOLD OVER 0.000050" MIN. NICKEL.
-N: 0.000100" MIN. NICKEL.
4. ASSEMBLY PLATING DESIGNATIONS:
-HN: (CENTER CONTACT)-H
(OUTER CONTACT) -N
(REMAINING METAL PARTS) -N
-GN: (CENTER CONTACT)-G
(OUTER CONTACT) -N
(REMAINING METAL PARTS) -N
5. SEE CO-RF-WI-3040-M RF PACKAGING STANDARD FOR PACKAGING INSTRUCTIONS.
PRODUCT TO BE PACKAGED IN TRAY TY-BNC001-1 WITH COVER TY-BNC002-2.
6. NUT AND WASHER TO BE PACKAGED SEPARATELY.

THIS PRODUCT MANUFACTURED WITH LEAD-FREE PROCESSING

UNLESS OTHERWISE SPECIFIED, DIMENSIONS ARE IN MILLIMETERS [INCHES]. TOLERANCES ARE:
DECIMALS ANGLES
.X: ±0.3 [0.1] 5°
.XX: ±0.13 [0.005]
.XXX: ±0.051 [0.0020]

PROPRIETARY NOTE
THIS DOCUMENT CONTAINS INFORMATION CONFIDENTIAL AND PROPRIETARY TO SAMTEC, INC. AND SHALL NOT BE REPRODUCED OR TRANSFERRED TO OTHER DOCUMENTS OR DISCLOSED TO OTHERS OR USED FOR ANY PURPOSE OTHER THAN THAT WHICH IT WAS OBTAINED WITHOUT THE EXPRESSED WRITTEN CONSENT OF SAMTEC, INC.



520 PARK EAST BLVD, NEW ALBANY, IN 47150
PHONE: 812-944-6733 FAX: 812-948-5047
e-Mail: info@SAMTEC.com code: 55322

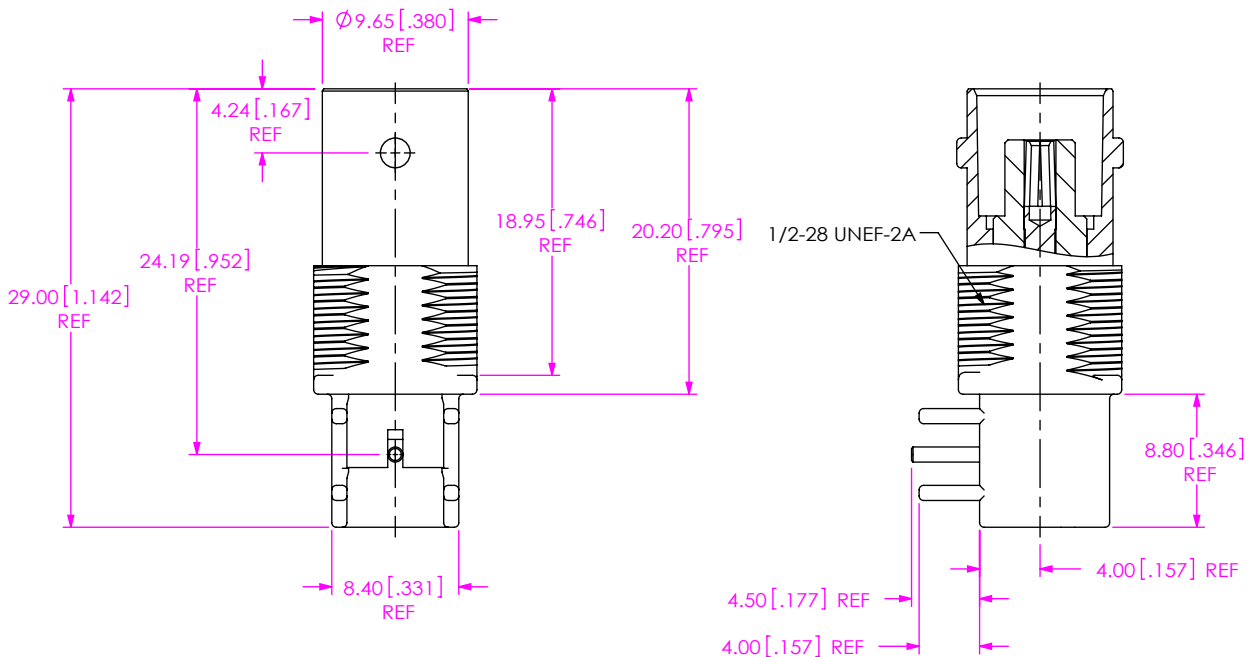
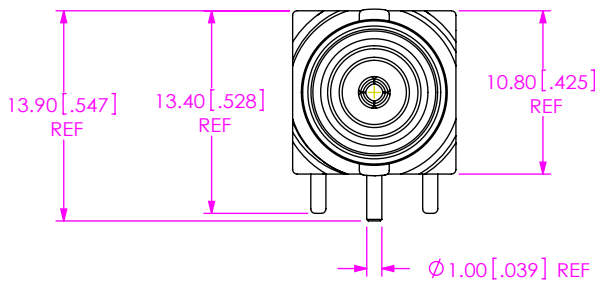
MATERIAL: DO NOT SCALE DRAWING SHEET SCALE: 2:1

SHELL: ZINC
NUT, WASHER: BRASS
CONTACT: PHOS BRONZE
DIELECTRIC: PTFE

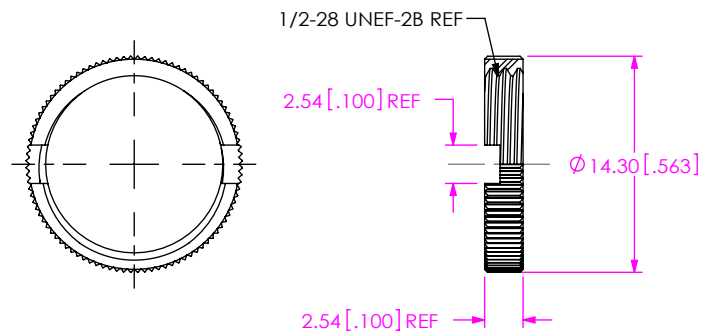
DESCRIPTION:
BNC 50 OHM RIGHT ANGLE JACK

DWG. NO.
BNC5-J-P-XX-RA-BH2D

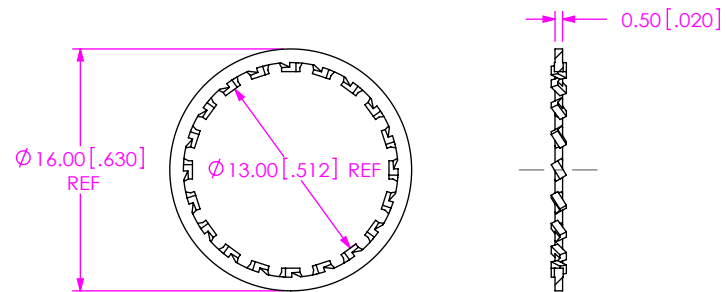
BY: ALVIN W 07/01/2010 SHEET 1 OF 2



SAMTEC PART NUMBER	ITEM
SUB-BNC5-J-P-XX-RA-BH2D	SUB ASSEMBLY



SAMTEC PART NUMBER	ITEM
BTNC-NUT-003-X	KNURLED NUT



SAMTEC PART NUMBER	ITEM
BTNC-LWAS-001-X	LOCKWASHER

PROPRIETARY NOTE
 THIS DOCUMENT CONTAINS INFORMATION CONFIDENTIAL AND PROPRIETARY TO SAMTEC, INC. AND SHALL NOT BE REPRODUCED OR TRANSFERRED TO OTHER DOCUMENTS OR DISCLOSED TO OTHERS OR USED FOR ANY PURPOSE OTHER THAN THAT WHICH IT WAS OBTAINED WITHOUT THE EXPRESSED WRITTEN CONSENT OF SAMTEC, INC.

DO NOT SCALE DRAWING

SHEET SCALE: 2:1

samtec

520 PARK EAST BLVD, NEW ALBANY, IN 47150
 PHONE: 812-944-6733 FAX: 812-948-5047
 e-Mail: info@SAMTEC.com code: 55322

DESCRIPTION:
 BNC 50 OHM RIGHT ANGLE JACK

DWG. NO.
BNC5-J-P-XX-RA-BH2D

BY: ALVIN W 07/01/2010 SHEET 2 OF 2