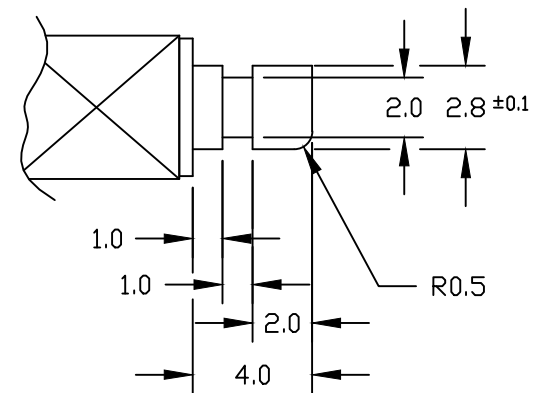
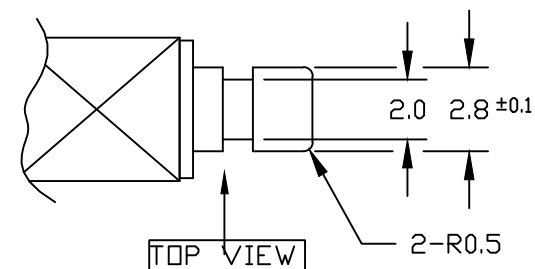


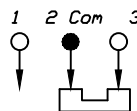
RECOMMEND P.C.B. LAYOUT



(ACTUATOR DETAIL) SCALE 4:1

NOTES:

1. ALL DIMENSIONS IN MM
2. GENERAL TOLERANCE: X.X=±0.4
X.XX=±0.25
3. TERM. NOS. FOR REF. ONLY
4. RATING: DC 30V, 0.3A
5. CONTACT MATERIAL:
PHOSPHOR BRONZE W/ SILVER PLATING
6. CONTACT RESISTANCE: 20 milli-Ohms max.
7. DIELECTRIC STRENGTH: 1,000V rms@ Sea Level
8. OPERATING FORCE: 230±100gf
9. TRAVEL : FULL 3.5mm; LOCK 2.5mm



CIRCUIT: SPDT

CONTACT CONFIGURATION

E-SWITCH®

TITLE					LC1258EENS				
SCALE	DATE	DR	DWG	REV					
2:1	3/21/03	AR	P070225	A					

THE INFORMATION CONTAINED IN THIS DOCUMENT IS PROPRIETARY TO E-SWITCH AND IS NOT TO BE COPIED OR TRANSFERRED