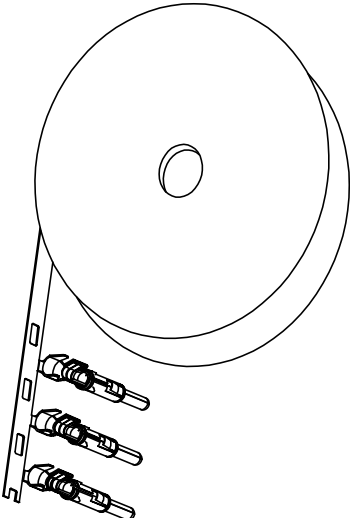
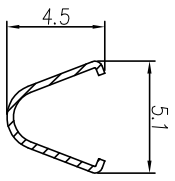


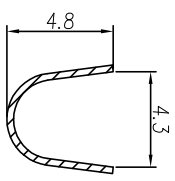
| REVOLUTIONS | | | | |
|-------------|-----|------------------|------------|-------|
| REV | ECO | DESCRIPTION | DATE | BY |
| A1 | - | RELEASED DRAWING | Sep-7-2016 | Ben |
| A2 | - | Updating Drawing | Oct-16-17 | Tommy |



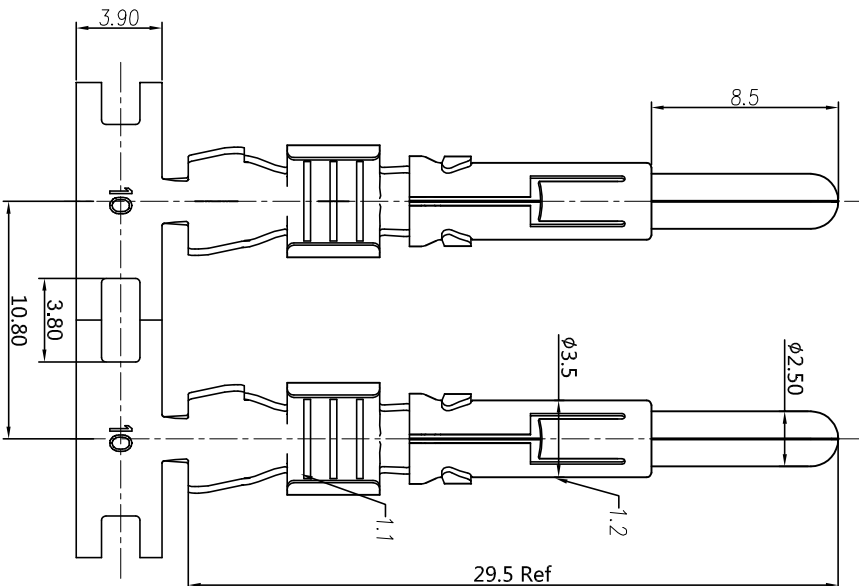
CONTACT ORIENTATION ON ROLL



SECTION C-C



SECTION D-D



- NOTES : (UNLESS OTHERWISE SPECIFIED)
- MATERIAL :
 - CONTACT BODY : COPPER ALLOY.
 - OUTER SPRING : STAINLESS STEEL.
 - SPECIFICATIONS :
 - CURRENT RATING : 23A MAX.
 - TERMINATION TYPE : CRIMPING.
 - WIRE RANGE : 4.0mm².
 - WIRE INSULATION DIA(MAX) : 4.3mm.
 - ROHS COMPLIANT.
 - ALL DIMENSIONS ARE FOR REFERENCE USE ONLY.

| P/N | CONTACT PLATING(MATING AREA) |
|--------------|---------------------------------|
| SP12A1T-10 | TIN PLATING OVER NICKEL. |
| SP12A1F-10 | GOLD FLASH PLATING OVER NICKEL. |
| SP12A1G10-10 | 10µ" GOLD PLATING OVER NICKEL. |
| SP12A1G15-10 | 15µ" GOLD PLATING OVER NICKEL. |
| SP12A1G30-10 | 30µ" GOLD PLATING OVER NICKEL. |

| QUANTITY | PART NUMBER | DESCRIPTION | ITEM |
|---|-------------|---|------|
| | | MATERIALS LIST | |
| <p>UNLESS OTHERWISE SPECIFIED 1) All dimensions are in millimeters. 2) Tolerances are as follows: 1 Pl. DEC 40.30 Fractions 1/16" 3 Pl. DEC 40.08 Angles 1° 3) Note reference = </p> | | | |
| <p>SIGNATURES DATE</p> <p>DRAWN: Ben 02/16/17 CHECKED: Tod 02/16/17 ENGINEER: Tommy 02/16/17</p> | | <p>APPROVAL: Tommy 02/16/17</p> | |
| <p>CUSTOMER: Tommy</p> | | <p>ECO-MATE PIN CONTACT, STAMPED, 4.0mm², 2.5mm CONTACT</p> | |
| <p>SIZE TYPE DWG NO. REVISION</p> <p>B C- SP12A1XX-10 A2</p> | | | |
| <p>SCALE: NONE SHEET 1 OF 1</p> | | | |

Amphenol

Sine Systems - www.amphenol-sine.com
 44724 Morley Drive
 Clinton Township, MI 48036