

6

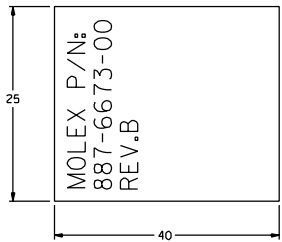
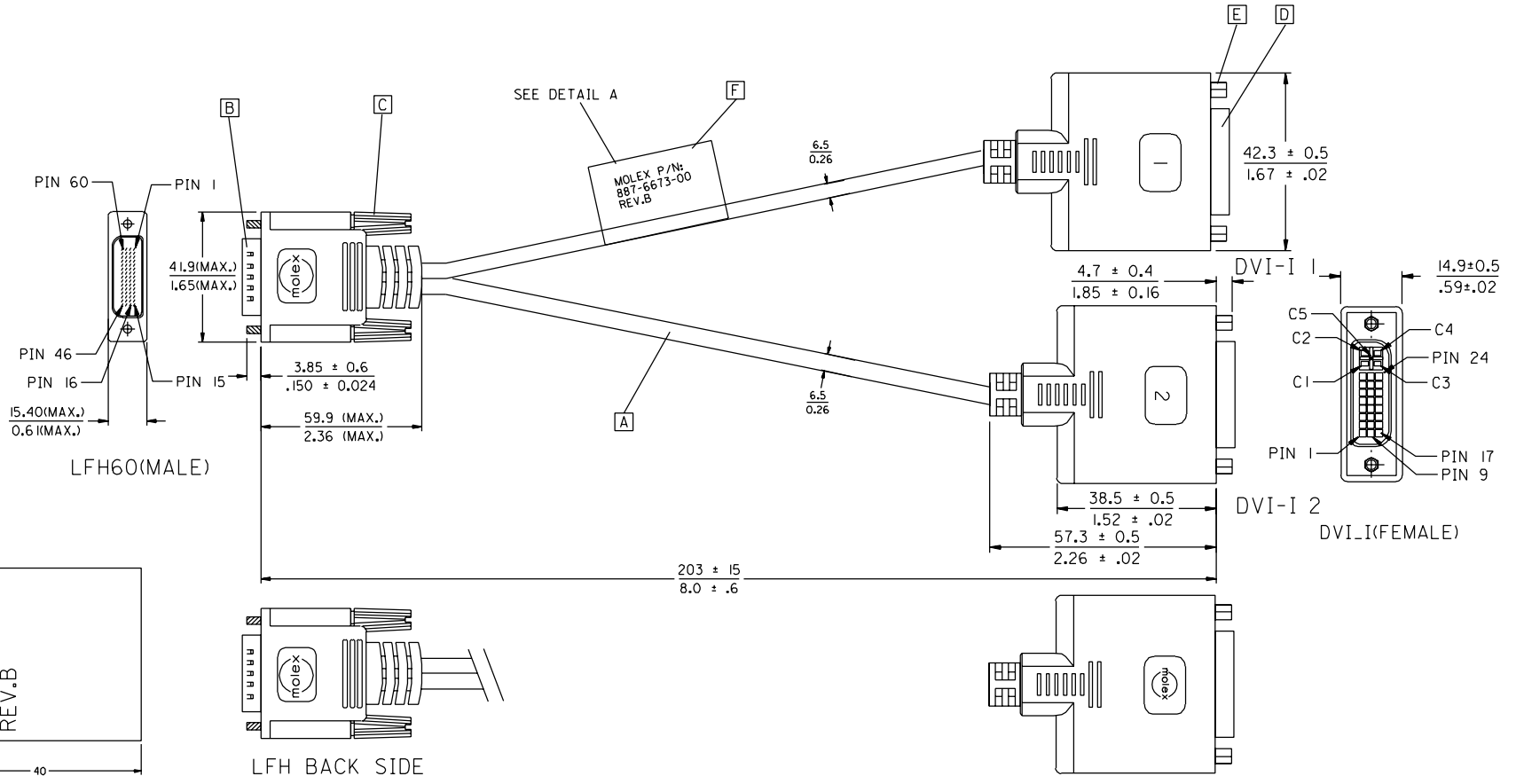
5

4

3

2

1



DETAIL A

EC NO. DRWN: METTLE 03/03/06 CHK: APPR:	EC NO. DRWN: MACKY 02/08/01 CHK: APPR:	EC NO. DRWN: MACKY 02/05/27 CHK: APPR:	EC NO. DRWN: MACKY 02/04/09 CHK: APPR:	EC NO. DRWN: MACKY 02/02/07 CHK: APPR:	DESCRIPTION
B1	B	A2	A1	A	REV

QUALITY SYMBOLS	GENERAL TOLERANCES: (UNLESS SPECIFIED)	SCALE N.S.T	DESIGN UNITS <input checked="" type="checkbox"/> mm <input type="checkbox"/> INCH	THIRD ANGLE PROJECTION	DIMENSIONS: <input checked="" type="checkbox"/> mm <input type="checkbox"/> INCH <input type="checkbox"/> mm ONLY	SHT REV
MAJOR ▼ = 0	mm INCH	DRAWN BY & DATE METTLE 03/03/06	TITLE: LFH60(M) TO TWO DVI-I(F) ADAPTER CABLE	MATERIAL NO. 88766-7300		
CRITICAL ▽ = 6	4 PLACES ±0. ±. 3 PLACES ±0. ±. 2 PLACES ±0. ±. 1 PLACE ±0. ±.	CHECKED BY & DATE MACKY 03/03/06	APPROVED BY & DATE T.WONG 03/03/06	DRAWING NO. SD-88744-025		
	ANGULAR: ± °	CAD FILENAME S88744AY.S01		SHEET NO. 1 OF 3		

THIS DRAWING CONTAINS INFORMATION THAT IS PROPRIETARY TO MOLEX INCORPORATED AND SHOULD NOT BE USED WITHOUT WRITTEN PERMISSION.		SIZE A4
--	--	------------

6

5

4

3

2

1

CONNECTION DIAGRAM:

SHIELD	SHIELD	GROUND
C5	PIN 1,4&60	GROUND (RED, BLUE, GREEN)
C4	PIN 56	VGA1_HSYNC
C3	PIN 3	VGA1_BLUE
C2	PIN 59	VGA1_GREEN
C1	PIN 2	VGA1_RED
PIN 24	PIN 32	DVI1_TXC-
PIN 23	PIN 31	DVI1_TXC+
PIN 22	PIN 57	DVI1_TXC RTN
PIN 19	PIN 33	DVI1_TX0 RTN
PIN 18	PIN 29	DVI1_TX0+
PIN 17	PIN 30	DVI1_TX0-
PIN 16	PIN 36	DVI1_HPD
PIN 15	PIN 54	SYNCS
PIN 14	PIN 5	+5V
PIN 11	PIN 34	DVI1_TX1 RTN
PIN 10	PIN 27	DVI1_TX1+
PIN 9	PIN 28	DVI1_TX1-
PIN 8	PIN 55	VGA1_VSYNC
PIN 7	PIN 7	DVI1_COC_DATA
PIN 6	PIN 6	DVI1_COC_CLOCK
PIN 3	PIN 35	DVI1_TX2 RTN
PIN 2	PIN 25	DVI1_TX2+
PIN 1	PIN 26	DVI1_TX2-
DVI 1	LFH60	CABLE FUNCTION

SHIELD	SHIELD	GROUND
C5	PIN 12,15&46	GROUND (BLUE, RED, GREEN)
C4	PIN 50	VGA2_HSYNC
C3	PIN 13	VGA2_BLUE
C2	PIN 47	VGA2_GREEN
C1	PIN 14	VGA2_RED
PIN 24	PIN 44	DVI2_TXC-
PIN 23	PIN 45	DVI2_TXC+
PIN 22	PIN 49	DVI2_TXC RTN
PIN 19	PIN 43	DVI2_TX0 RTN
PIN 18	PIN 16	DVI2_TX0+
PIN 17	PIN 17	DVI2_TX0-
PIN 16	PIN 40	DVI2_HPD
PIN 15	PIN 52	SYNCS
PIN 14	PIN 11	+5V
PIN 11	PIN 42	DVI2_TX1 RTN
PIN 10	PIN 18	DVI2_TX1+
PIN 9	PIN 19	DVI2_TX1-
PIN 8	PIN 51	VGA2_VSYNC
PIN 7	PIN 9	DVI2_COC_DATA
PIN 6	PIN 10	DVI2_COC_CLOCK
PIN 3	PIN 41	DVI2_TX2 RTN
PIN 2	PIN 20	DVI2_TX2+
PIN 1	PIN 21	DVI2_TX2-
DVI 2	LFH60	CABLE FUNCTION

EC NO.	DRWN:	CHK:	APPR:	EC NO.	DRWN:	CHK:	APPR:	EC NO.	DRWN:	CHK:	APPR:	EC NO.	DRWN:	CHK:	APPR:	EC NO.	DRWN:	CHK:	APPR:	DESCRIPTION	QUALITY SYMBOLS	GENERAL TOLERANCES: (UNLESS SPECIFIED)	SCALE N.S.T	DESIGN UNITS <input checked="" type="checkbox"/> mm <input type="checkbox"/> INCH	THIRD ANGLE PROJECTION	TITLE:	DIMENSIONS: <input checked="" type="checkbox"/> mm <input type="checkbox"/> INCH <input type="checkbox"/> mm ONLY	SHT	REV										
B1	METTLE			B	MACKY			A2	MACKY			A1	MACKY			A	MACKY			REV	MAJOR ▼ = 0 CRITICAL ▽ = 6	4 PLACES ±0. ±. 3 PLACES ±0. ±. 2 PLACES ±0. ±. 1 PLACE ±0. ±.	mm INCH	<input checked="" type="checkbox"/> mm <input type="checkbox"/> INCH	<input checked="" type="checkbox"/> <input type="checkbox"/>	METTLE 03/03/06 MACKY 03/03/06 T.WONG 03/03/06	<input checked="" type="checkbox"/> mm <input type="checkbox"/> INCH <input type="checkbox"/> mm ONLY												
																				ANGULAR: ± °		DRAWN BY & DATE METTLE 03/03/06		CHECKED BY & DATE MACKY 03/03/06		APPROVED BY & DATE T.WONG 03/03/06		CAD FILENAME S88744AY.S02		MATERIAL NO. 88766-7300		DRAWING NO. SD-88744-025		SHEET NO. 2 OF 3		THIS DRAWING CONTAINS INFORMATION THAT IS PROPRIETARY TO MOLEX INCORPORATED AND SHOULD NOT BE USED WITHOUT WRITTEN PERMISSION.		SIZE A4	

WBORD_A.BOR REV A
97/05/14 LEVEL 3

6

5

4

3

2

1

NOTE:1. OVERMOLD SPECIFICATION

- 1.1 LFH60 BOOT MOLDED WITH BLACK PVC RESIN, UL94V-0.
 1.2 DVI BOOT MOLDED WITH SNOW WHITE PVC RESIN, UL94V-0.

2. MECHANICAL SPECIFICATION

- ▽ 2.1 CABLE SHOULD STAND THE PULL FORCE 89-111N FOR 30 SECONDS WITH NO VISIBLE TERMINATION DAMAGE.
 2.2 CABLE SHOULD PASS THE FLEX TEST IN 100 CYCLES AT EACH OF PLANES, PER EIA 364-41, CONDITION 1.

3. CABLE ASSEMBLY ELECTRICAL SPECIFICATION

- ▽ 3.1 HI-POT VOLTAGE: 500VDC FOR 10ms.
 ▽ 3.2 INSULATION RESISTANCE: 100 MEGA Ohms(MIN.)
 c 3.3 CONTACT RESISTANCE: 2 Ohms(MAX.)
 ▽ 3.4 DIFFERENTIAL LINES CHARACTERISTIC IMPEDANCE: 100±7 Ohms @TDR 200 PSEC RISE TIME.
 ▽ 3.5 COAXIAL LINES CHARACTERISTIC IMPEDANCE: 75±10% Ohms @TDR 200 PSEC RISE TIME.
 3.6 WRAP COPPER TAPE OVER BRAID, THEN CRIMP THE METAL CAN ON COPPER TAPE WITH 360°.

4. CONNECTOR PLATING: 30u" GOLD PLATE.

5. SCREW SPEC.: 4-40 UNC.

ITEM	DESCRIPTION	QTY.
F	LABEL	1
E	DVI(F) JACK SCREW 4-40 UNC	2
D	DVI_I FEMALE CONNECTOR	2
C	LFH SCREW 4-40 UNC	2
B	LFH-60 PLUG ASSEMBLY	1
A	DVI-A/D CABLE	2

EC NO. DRWN: METTLE 03/03/06 CHK: APPR:		EC NO. DRWN: MACKY 02/08/01 CHK: APPR:		EC NO. DRWN: MACKY 02/05/27 CHK: APPR:		EC NO. DRWN: MACKY 02/04/09 CHK: APPR:		EC NO. DRWN: MACKY 02/02/07 CHK: APPR:		DESCRIPTION REV	QUALITY SYMBOLS MAJOR ▼ = 0 CRITICAL ▽ = 6	GENERAL TOLERANCES: (UNLESS SPECIFIED)		SCALE N.S.T	DESIGN UNITS <input checked="" type="checkbox"/> mm <input type="checkbox"/> INCH	THIRD ANGLE PROJECTION 	DIMENSIONS: <input checked="" type="checkbox"/> mm <input type="checkbox"/> INCH <input type="checkbox"/> mm ONLY			SHT REV					
B1		B		A2		A1		A				mm	INCH				mm	INCH	mm		INCH	mm	INCH	mm	INCH
										DRAWN BY & DATE METTLE 03/03/06		TITLE: LFH60(M) TO TWO DVI-I(F) ADAPTER CABLE			DRAWN BY & DATE MACKY 03/03/06		APPROVED BY & DATE T.WONG 03/03/06			MATERIAL NO. 88766-7300		DRAWING NO. SD-88744-025		SHEET NO. 3 OF 3	
										CAD FILENAME S88744AY.S03		ANGULAR: ± °			MATERIAL NO. 88766-7300			DRAWING NO. SD-88744-025		SHEET NO. 3 OF 3		SIZE A4			
										THIS DRAWING CONTAINS INFORMATION THAT IS PROPRIETARY TO MOLEX INCORPORATED AND SHOULD NOT BE USED WITHOUT WRITTEN PERMISSION.															

WBORD_A.BOR REV A
97/05/14 LEVEL 3