

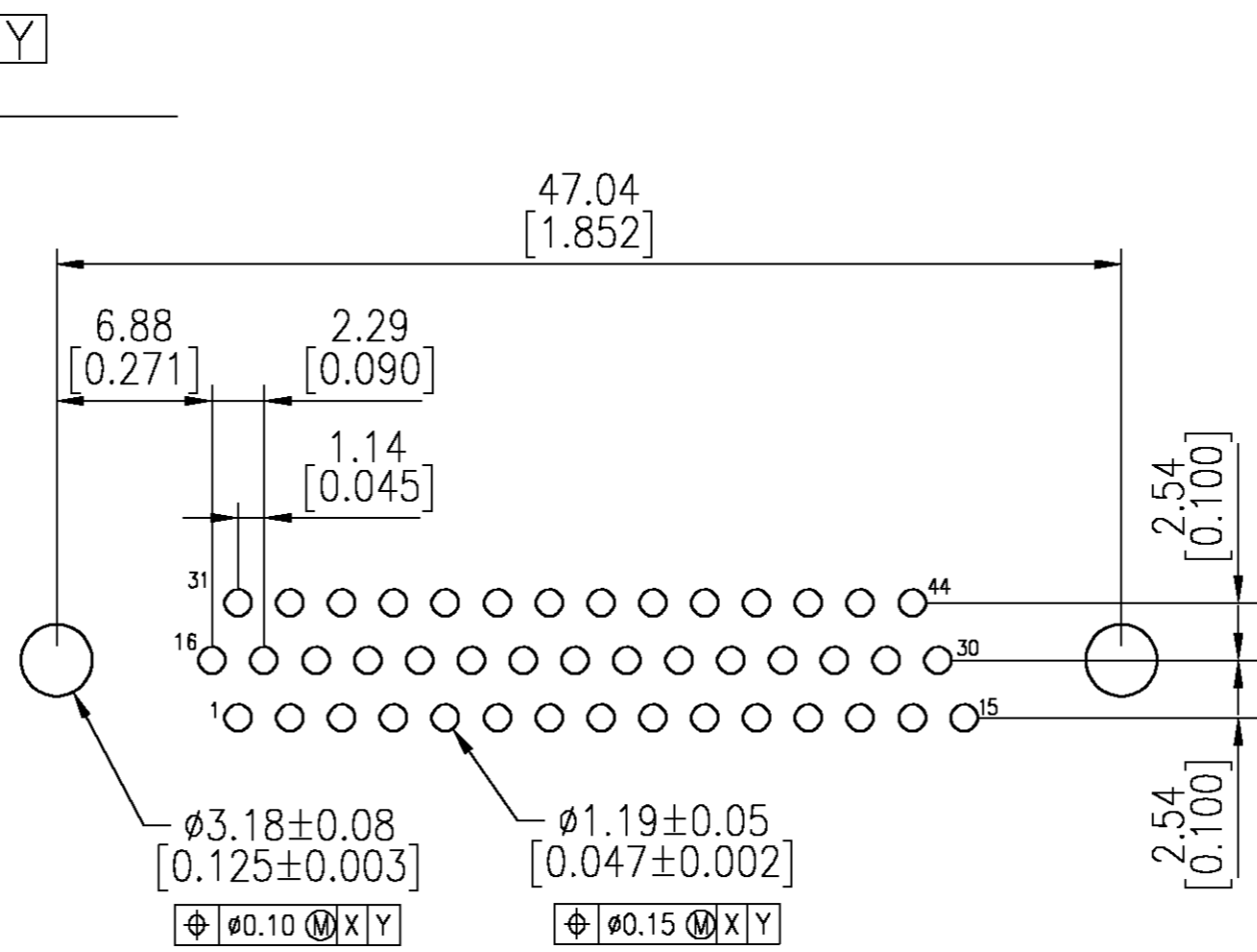
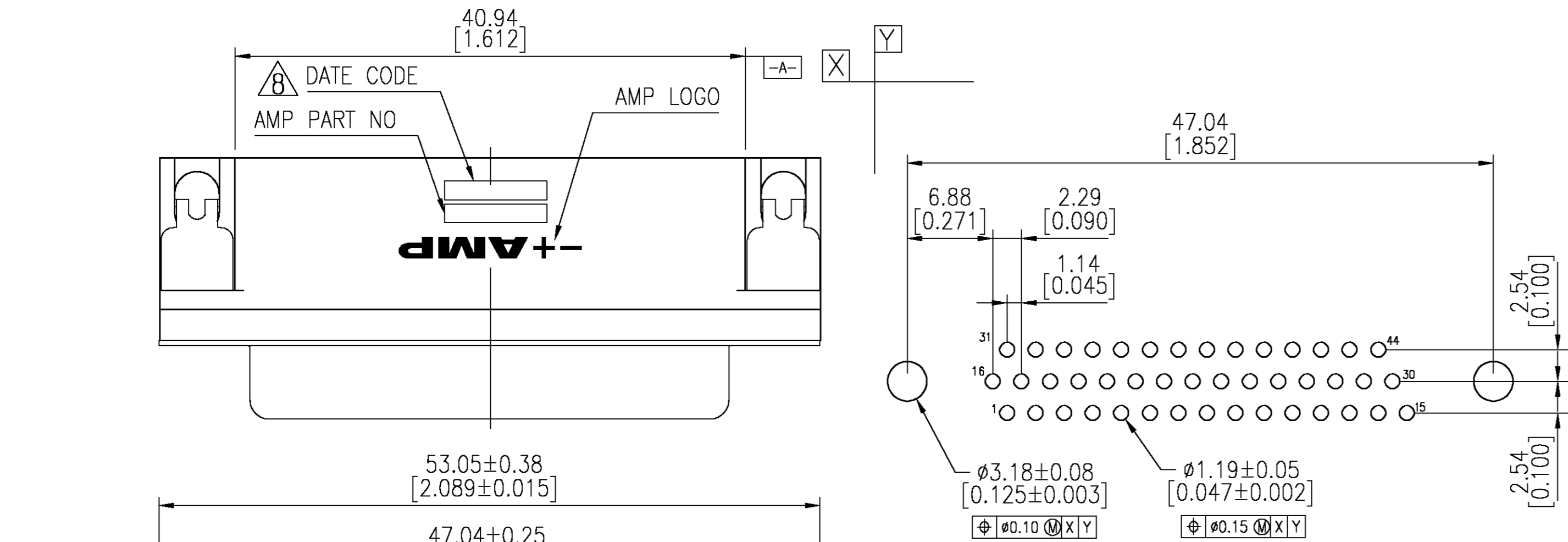
THIS DRAWING IS UNPUBLISHED. RELEASED FOR PUBLICATION
 © COPYRIGHT BY TYCO ELECTRONICS CORPORATION. ALL RIGHTS RESERVED.

Loc		DIST		REVISIONS			
GP	00	P	LTR	DESCRIPTION	DATE	DWN	APVD
		0		RELEASED PER EC OS13-0056-05	25FEB05	JG	SB

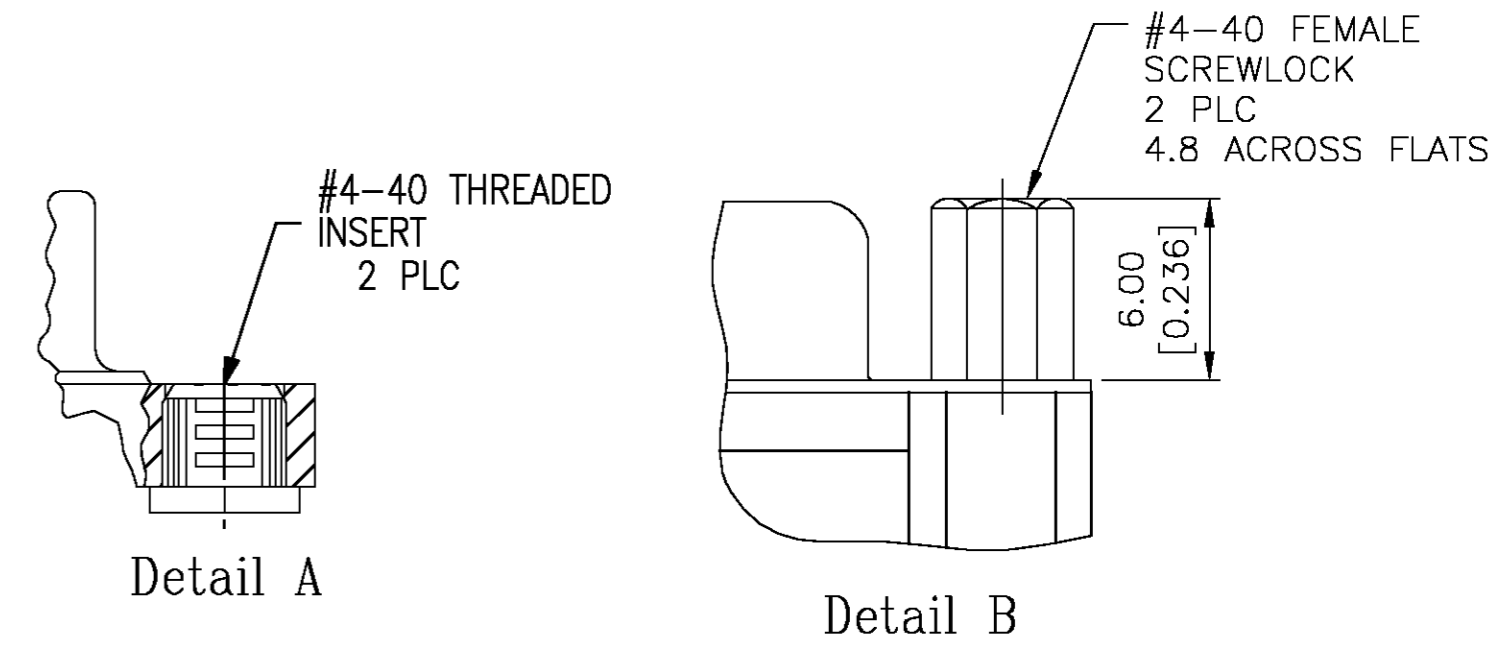
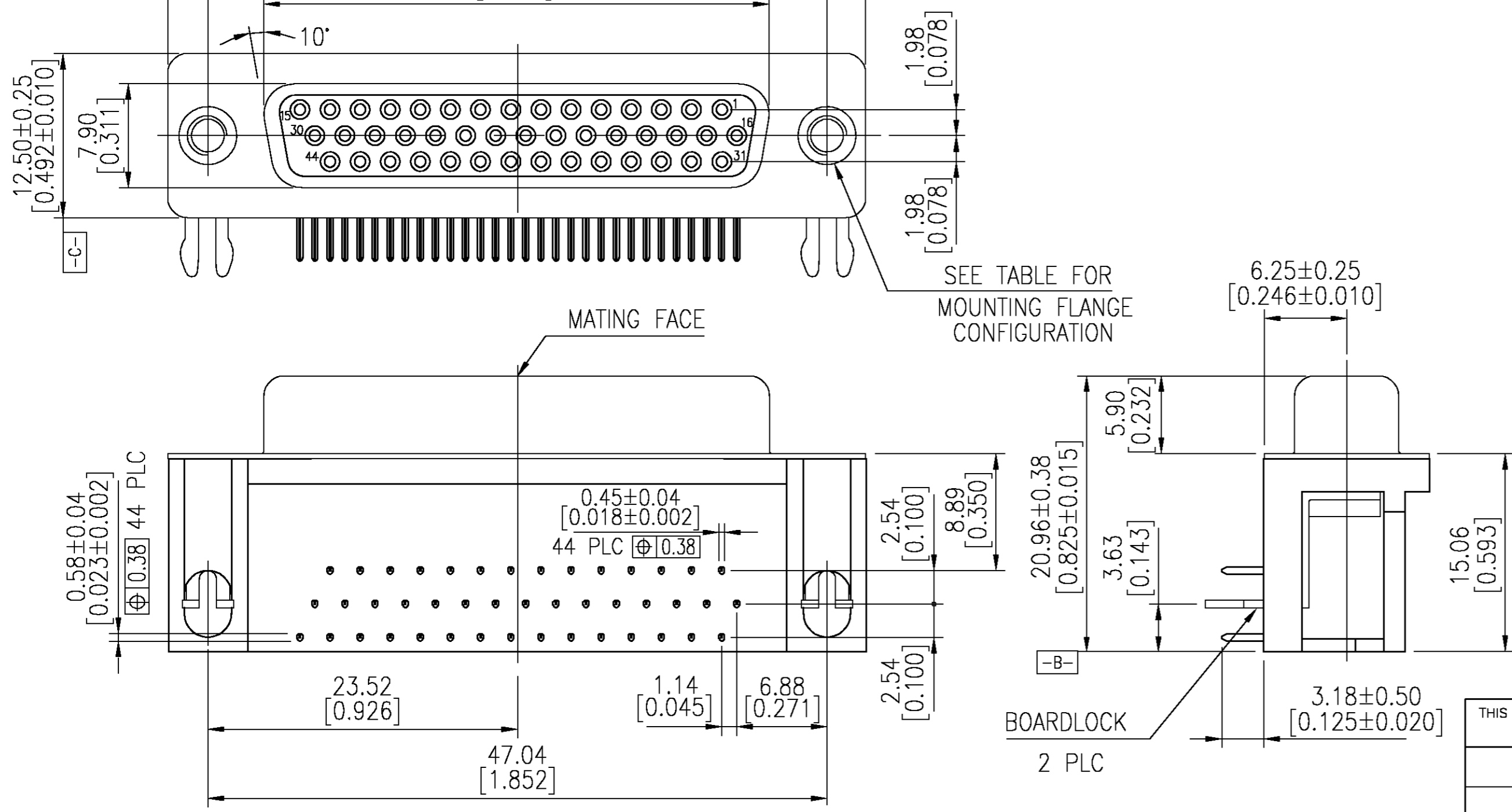
MATERIAL:

- Housing: PBT , 30 % G.F polyester, Black. (UL 94V-0 Rated)
- Contact: Phos. Bronze.
- Contact Plated: Gold Plated over 50u" Nickel underplated.
- Solder Tail: Sn Plated 120u" over 50u" Nickel underplated.
- Shell: Steel, Nickel Plated.
- Boardlocks: Brass, Tin Plated 100u".
- Screwlocks: Brass, Nickel Plated 30u".

△ Four digit date code in this format.
 Year 01 45 Manufacturing Week



RECOMMENDED PCB LAYOUT



Tray	Detail B	15 μ"	2-5748482-5
Tray	Detail A	Gold flash	2-5748482-4
Tray	Detail A	15 μ"	2-5748482-3
Tray	Detail A	30 μ"	5748482-5
Packaging	Mounting Flange	Contact Finish	Part No

THIS DRAWING IS A CONTROLLED DOCUMENT.

DIMENSIONS: mm [INCHES]	TOLERANCES UNLESS OTHERWISE SPECIFIED: 0 PLC ± - 1 PLC ± 0.30 2 PLC ± 0.20 3 PLC ± 0.10 4 PLC ± - ANGLES ± 2° FINISH	DWN J.GERACE 25FEB05 CHK S.BOLASH 25FEB05 APVD M.WALMSLEY 25FEB05	tyco Electronics Tyco Electronics Corporation Harrisburg, Pa 17105-3608
MATERIAL		NAME AMPLITE HD-22, 44 POSITION RECEPTACLE, RIGHT ANGLE	RESTRICTED TO
		SIZE A2 CAGE CODE 00779 DRAWING NO C=5748482	SCALE 1:1 SHEET 1 OF 1 REV 0
		CUSTOMER DRAWING	

5748482