

1

2

3

4

5

6

7

A

B

C

D

E

F

A

B

C

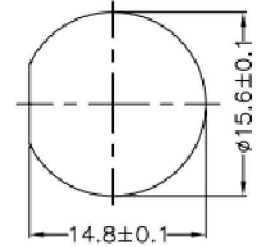
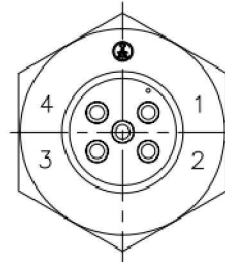
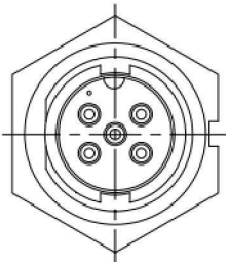
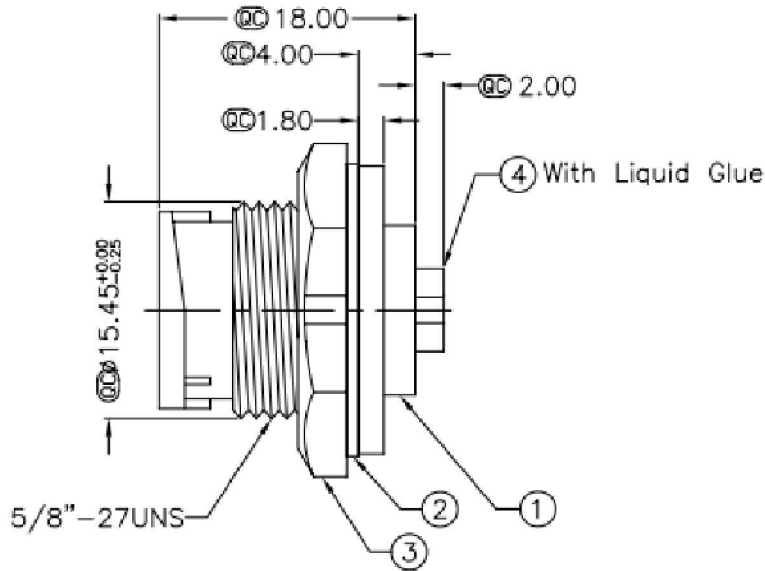
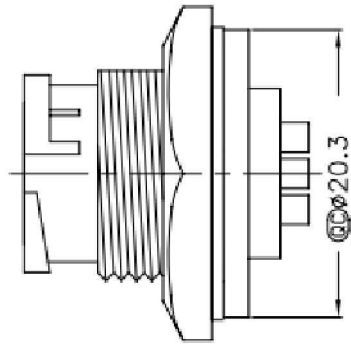
D

E

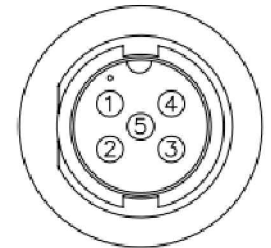
F

G

H



Recommended Panel Cut-Out



Pin Assignments Front View

Note:

- \* Ⓞ Important Dimension.
- \* Waterproof Rate: IP67
- \* Connector: Black, Nylon+GF
- \* Pin: Copper Alloy, Gold Plated

RoHS compliant  
Unit: mm

Scale	Free						Date	Name	Customer-No.
TOLERANCE						Drawn	09.06.2014	Joanna	
Unit	±XX					Approved	09.06.2014	Joanna	ASSMANN WSW-No.
.X	±0.25								A-CR-05PMMS-LC-WP
.XX	±0.1								Drawing-No.
.XXX	±0.05								ASS 6370 CO
DIM	Tol								rev00
		Ⓞ	Drawn		09.06.2014	Joanna			
Angle	±1°	Id.	Modification		Date	Name			Sheet



1

2

3

4

5

6

7