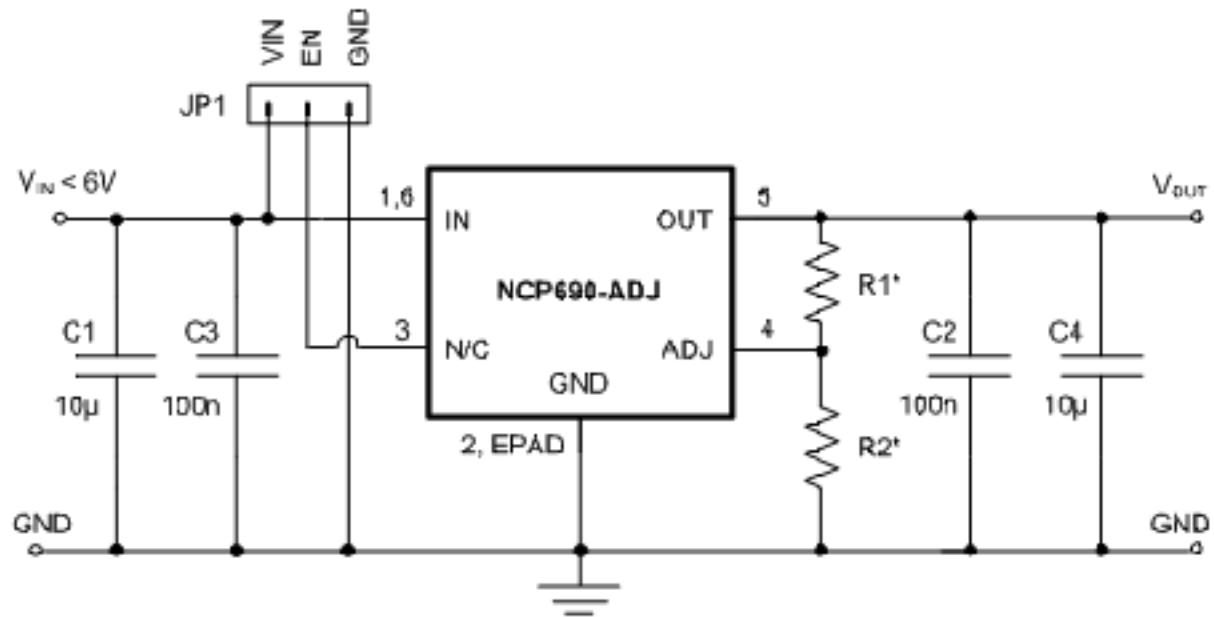


Schematic for the NCP690, 1A, Adjustable Output Voltage LDO Demonstration Board

ON Semiconductor



*R1, R2 – Please choose proper values for required output voltage option
To Calculate the values of R1, R2 for chosen V_{out} please use the following equation: $V_{out}=1.25(1+R1/R2)$

NCP690, 1A, Adjustable Output Voltage LDO Schematic View

Schematic for the NCP690, 1A, Adjustable Output Voltage LDO Demonstration Board

ON Semiconductor



The table below shows the example values of R1, R2 resistors for some typical Output Voltages:

Desired Output Voltage [V]	Feedback Resistors		Set Output Voltage [V]	Output Voltage Error [mV]	Resistor Divider Current I_{DIV} [μ A]
	R1 [k Ω]	R2 [k Ω]			
1.50	2	10	1.5000	0	125
1.80	1.6	3.6	1.8055	+ 5.5	347
2.50	9.1	9.1	2.5000	0	137
2.70	3.9	3.3	2.7300	+ 27.3	378
3.30	15	9.1	3.3104	+ 10.4	137
3.60	6.8	3.6	3.6111	+ 11.1	347
5.00	30	10	5.0000	0	125

Please also note that the feedback resistors should be chosen to satisfy the minimum output current requirement, which is 100 μ A.